

21+ F-150/250/350/Raptor-HEAVY Duty A-Pillar Mount Installation

The heavy duty A-Pillar / Ditch mounts can support standard or the XL lights, such as the XL model Pods, Rigid 360 6 inch and Baja Designs LP6..

XL series lights should NOT be used on the standard mounts. For those, you will need these.

These mounts are very easy to install. You don't need to remove the cowl unless you want to. As seen in Fig 1, lift the rubber outer side of the cowl on each side to expose the TOP bolt and remove it. In Fig 2, you will see the location of the 2nd bolt that needs removed. Both will reinstall over the new bracket. Before you tighten them down, please see fig 3.

It doesn't hurt to coat your painted areas with masking tape where you work sliding brackets and bolts around.

Fig 1:



Fig 2: (Pic turned sideways)



In Fig 3, you will notice the piece of cardboard between the bracket and the painted fender. Be sure you have space between them. Otherwise, when you tighten down the 2 bolts over the bracket, it can shift a little and CRUSH the paint on the fender. That can lead to cracking or rubbing of the factory paint. There is plenty of play in the slots on the brackets, so you can and should leave a small gap between the paint and the bracket. That's what Fig 2 illustrates. You can use something like card stock folded over a couple times, 1 piece of cardboard, or anything like that which won't scratch the paint when you pull it out, but it also helps maintain that gap as you tighten the 2 bolts down. So wiggle that bracket and make sure you have a slim, but even gap. Note Fig 4, which shows driver vs passenger side. The TOP mount tab goes closest to the windshield.

Fig 3:

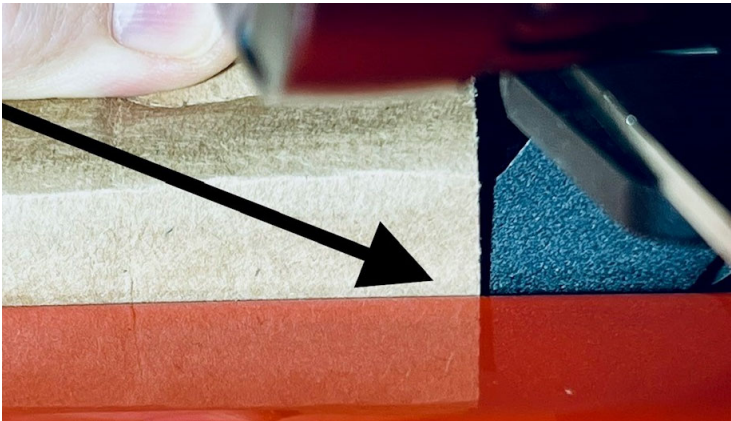


Fig 4:

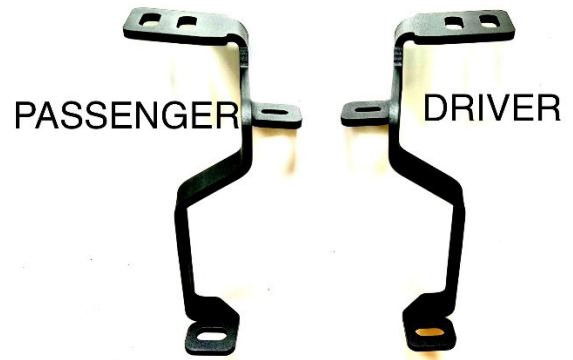


Fig 5:

Fig 5 shows the antenna mast on the passenger side. You can install BOTH sides WITHOUT removing the cowl. However, the passenger side is just a little more difficult due to the antenna mast. The easiest way to do it, is to unscrew the antenna from the base. You will need to LIFT the rubber end of that cowl up ABOVE the post that the antenna screws in, so it is BELOW the cowl and not sticking through it. You will need to then slide that back mount tab OVER the top of the mast, while it is BELOW the cowl. You might just release the one tab on that side on the cowl so it lifts easier.

Once you get it over that mast, it drops right down into Place.



Last, install your wiring. You may have an A-Pillar harness from us. If so, you just run it from one side to the other and then to the switches. You CAN remove the cowl to hide the wiring more if you want... Or, you can run it along the bottom of the hood under the heat cover and zip tie it along the hinges. Where it comes out the passenger side to the switches, be sure to connect it first before you zip tie so you have the length needed. Then secure it.

Once you ground and connect your harness, you should be in business!