

Bolts Kit For Lights (Use their Plastic Insert)



Bolts for T- Bracket and Plate



Complete Kit-



MASK THE GRILL SO IT WON'T GET SCRATCHED WHEN LAYING IT ON IT'S FACE!!!!

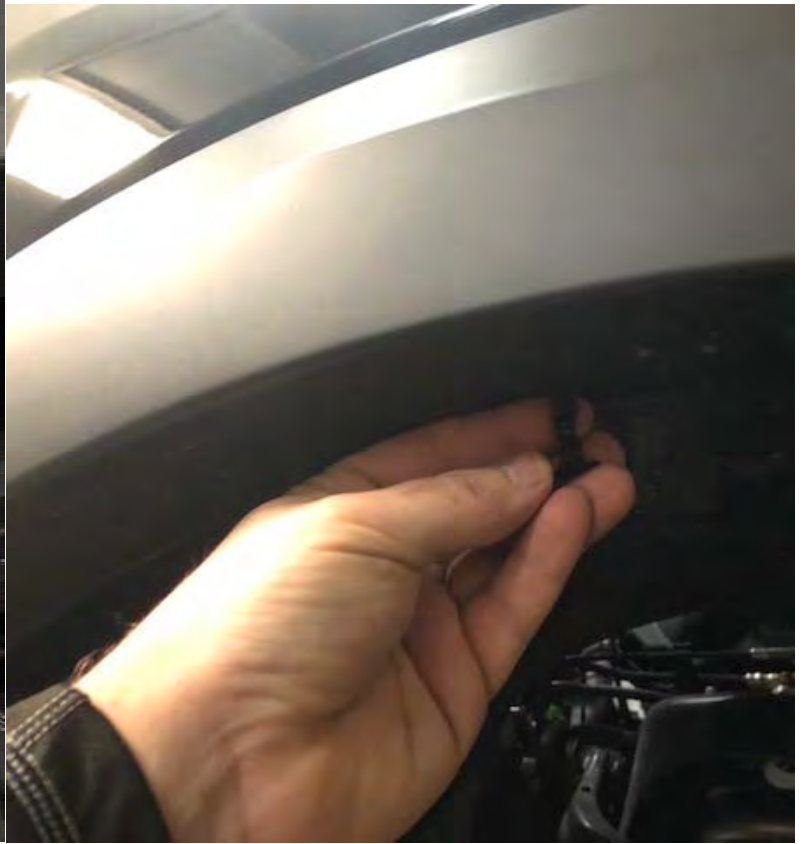
Remove Pins from Top of Grill cover and remove Cover



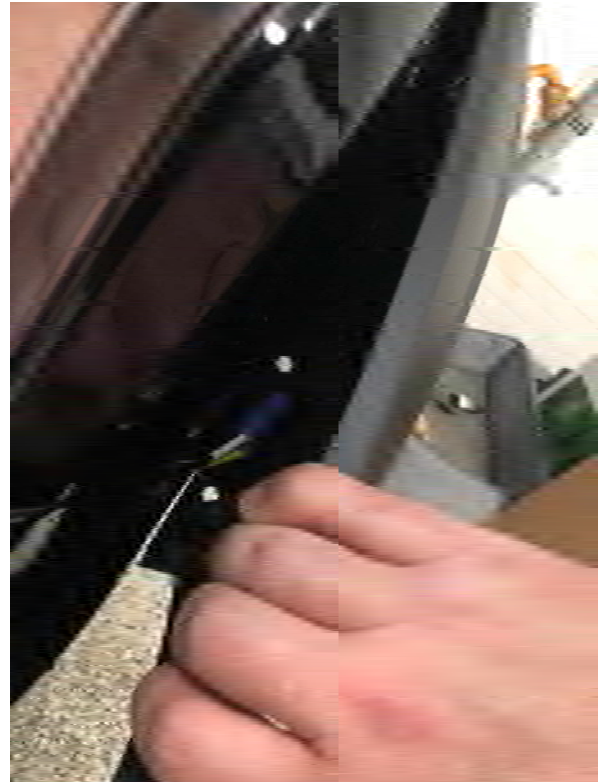
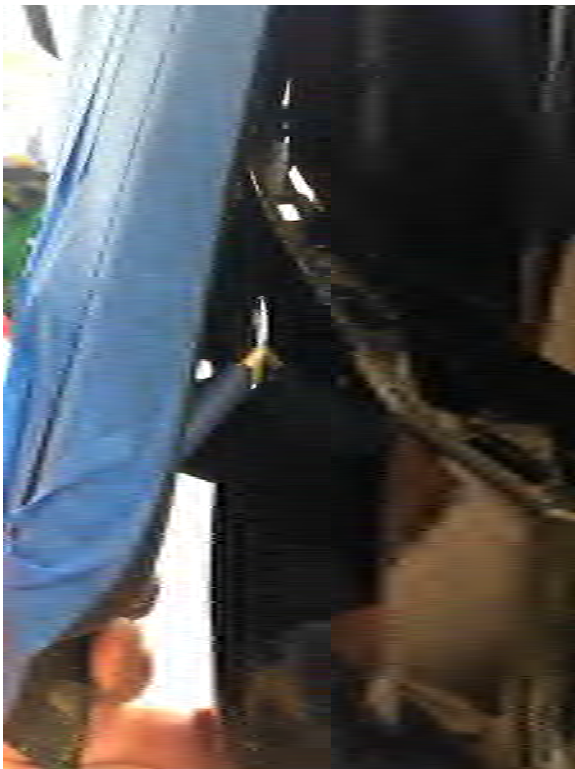
Remove Bolts from top of Grill



Remove 2 Screws on front inside of each Fender Flare, then 1 Push pin top inner center of same flare.



Be sure to tape off or mask the front corners of BOTH flares before the next step because removing the bumper trim piece WILL scratch the flares...



Remove Upper Bumper trim panel by GENTLY pulling the snaps out of their Groves. Work both sides a little at a time then meet in the middle. Don't pull all from one side.



That Exposes the bottom Bolts for the Grill...

Be sure to mask off around the TOP of the bumper so you don't scratch it when you pull the trim panel off.



There is a Bolt on EACH side under the headlight.

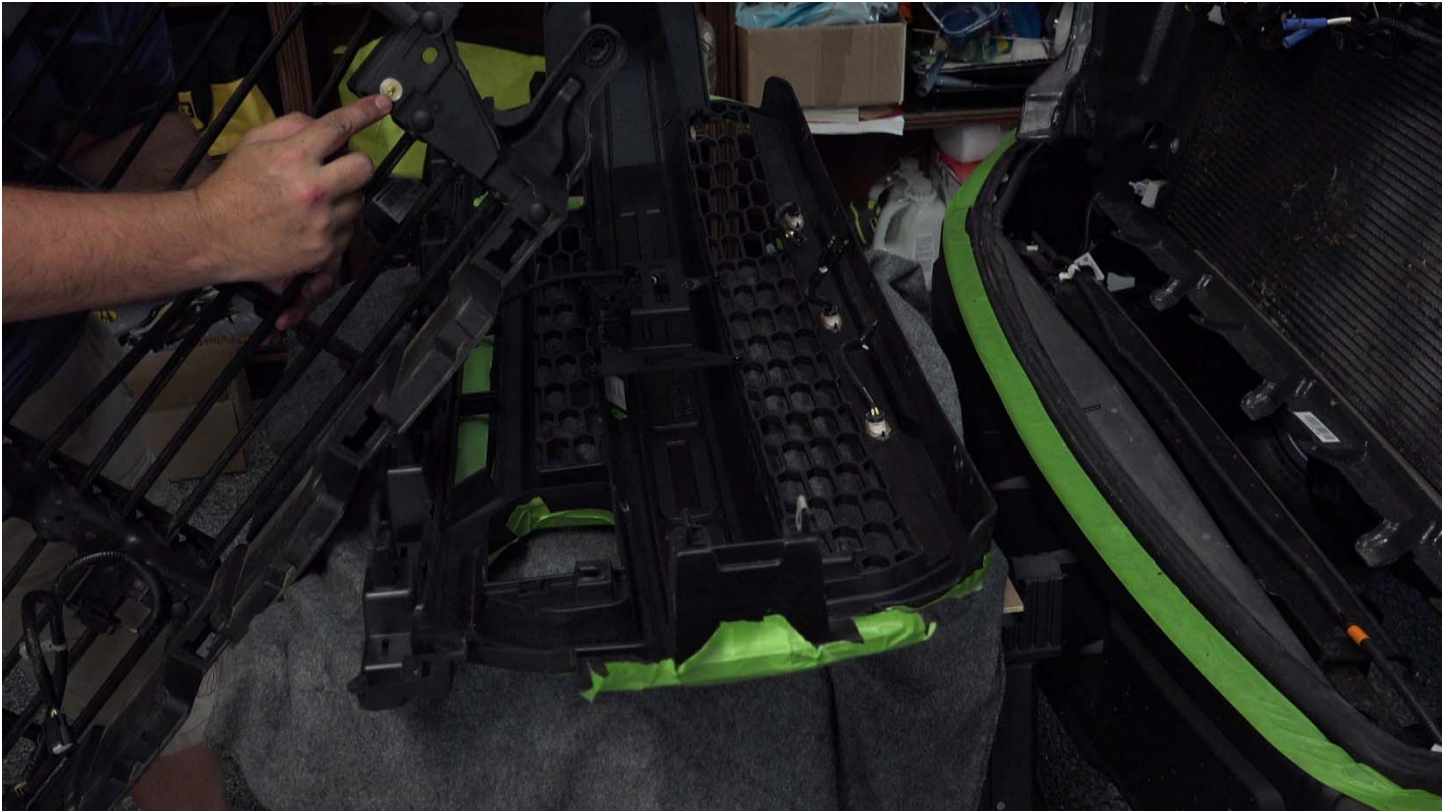
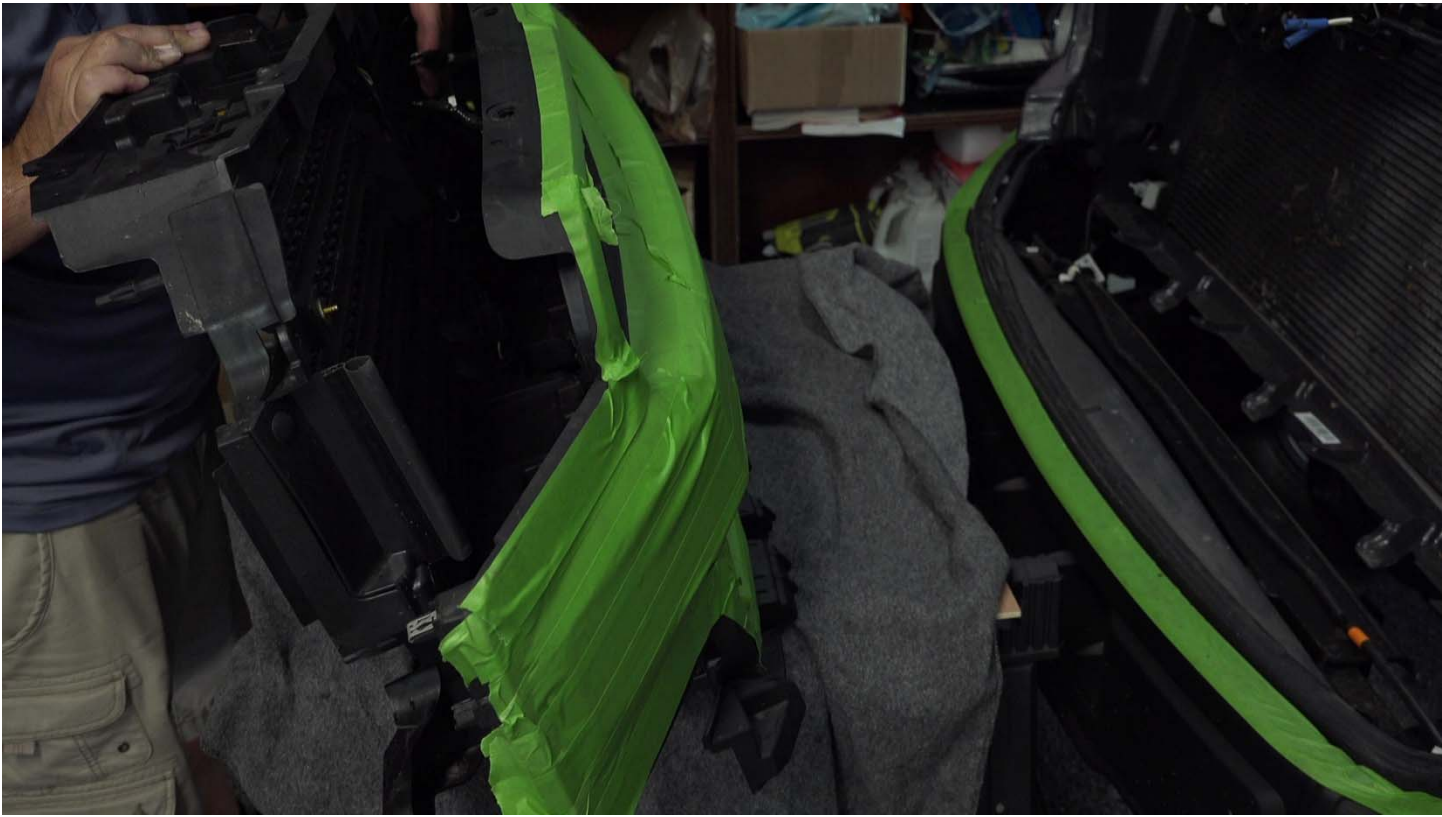


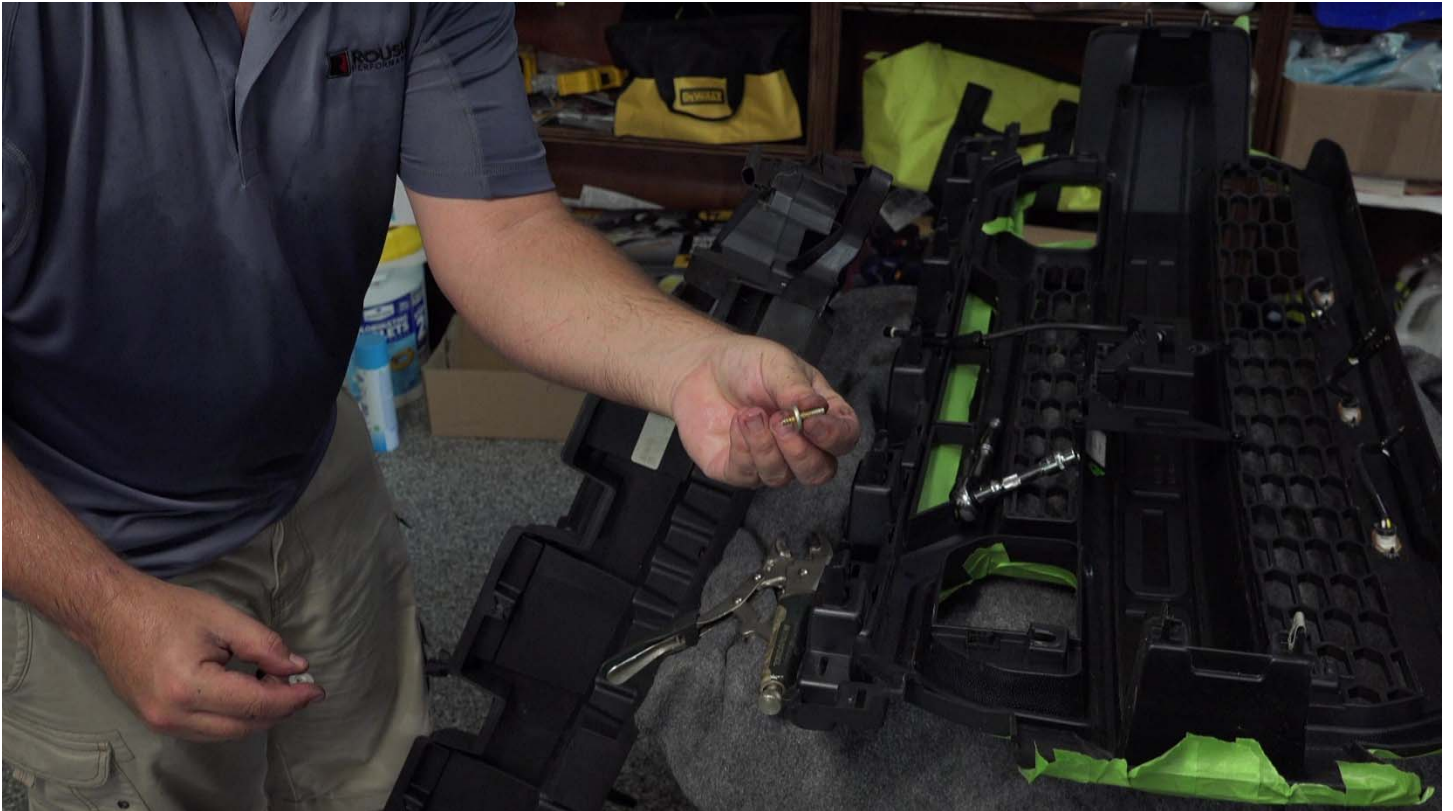
From there, you can gently pull the grill off. There are 2 clips that hold it into the headlight. You need to work it and pull those out. Look for the clips. Sometimes they fall off and need put back on the grill for reinstall.



Separate the Active Shutters from the front grill. There are 4 bolts that you will need to carefully take a pair of pliers (Vice Grips) (They are gold colored and have a lock nut on them. You will need pliers or vice grips to hold the ROUND flat center so you can remove the lock nut. **DO NOT USE PLYERS ON THE THREADS!!! IT WILL FLATEN THEM AND IT WILL NOT RETAIN BACK IN THE RETAINER!!!!** to the round part of the studs (Not the threads) and hold while removing the lock nuts because the studs will come out of their plastic clips.







Then re insert them into their plastic clips.

Now insert your brackets as shown and then the lights. Harness will extend out the drivers side. Run the wire BEHIND the metal bracket where the camera is but zip tie it up away from the camera.

IMPORTANT! Zip tie the wire **FIRMLY** at a 45 degree angle **DOWN** to each T- Bracket so it does not interfere with the active shutters when installed.





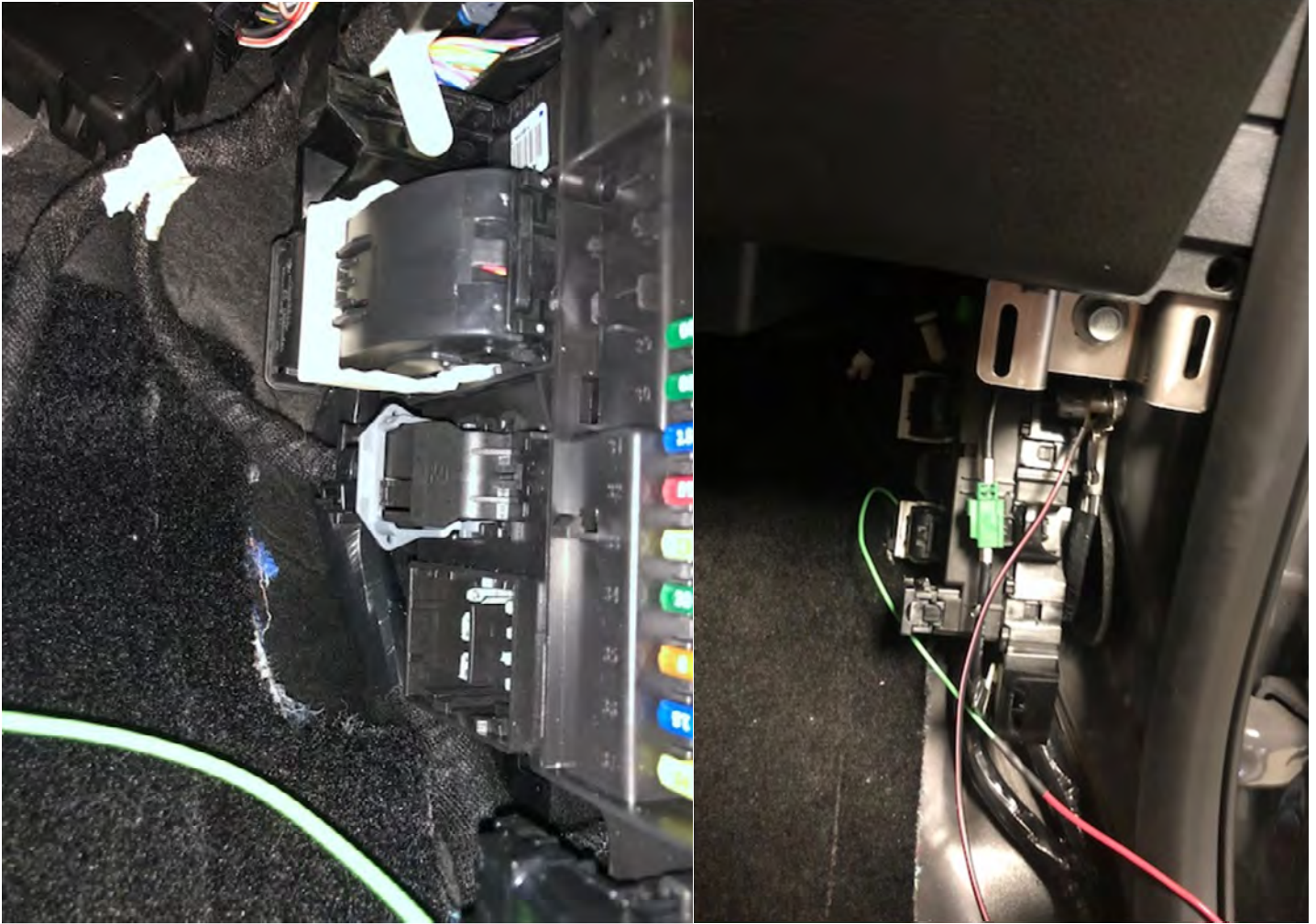
Run 3 wires through Rubber Grommet on firewall drivers side/floorboard. These will run into the console for the switch panel.

IMPORTANT! IT IS VERY IMPORTANT THAT YOU BE CAREFUL HERE. A COAT HANGER CAN BE USED, BUT NOT ALWAYS RECCOMENDED BECAUSE IT CAN BEND. YOU NEED A LONG POINTED TOOL TO PUNCTURE THE THICK RUBBER GROMMET TO BRING THE WIRE THROUGH. IF YOUR HANGER SLIPS, OR YOU POKE A HOLE TOO CLOSE TO THE WIRES THAT ARE RUN IN THE CENTER, YOU COULD DAMAGE THEM AND THEREFORE CAUSE PROBLEMS WITH YOUR TRUCK. STAY CLEAR OF THE FACTORY WIRE HARNESS.

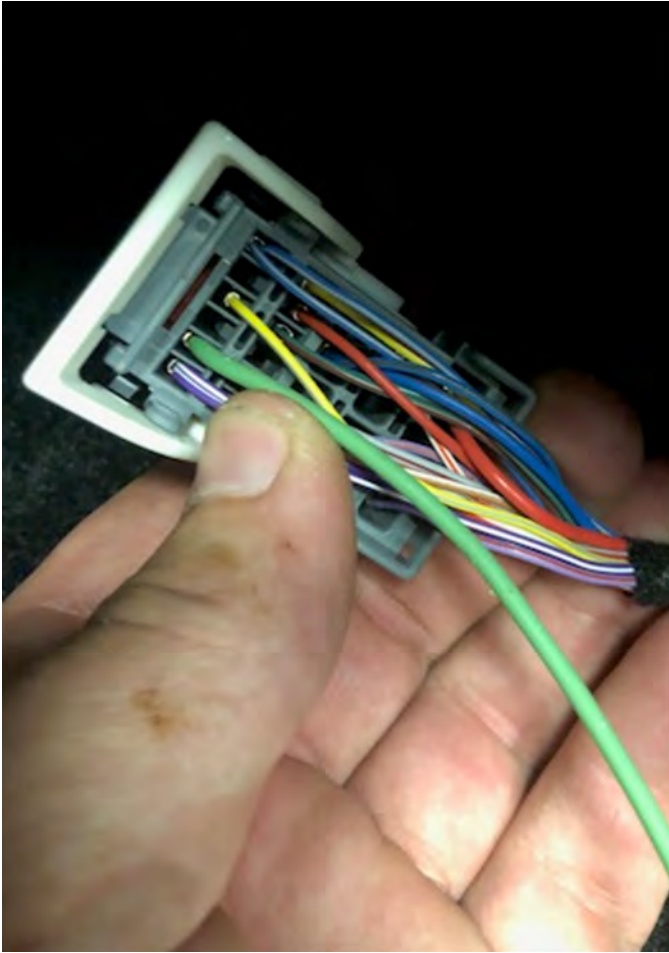


Remove Passenger side Fuse panel and trim piece. Install green pin in BOTTOM plug as shown unplugged. Also Ground to stud on right pic.

Replace the TOP LEFT 10 amp fuse with the supplied 20 amp fuse.



Install pin in second from right, top slot. Then tie back together.

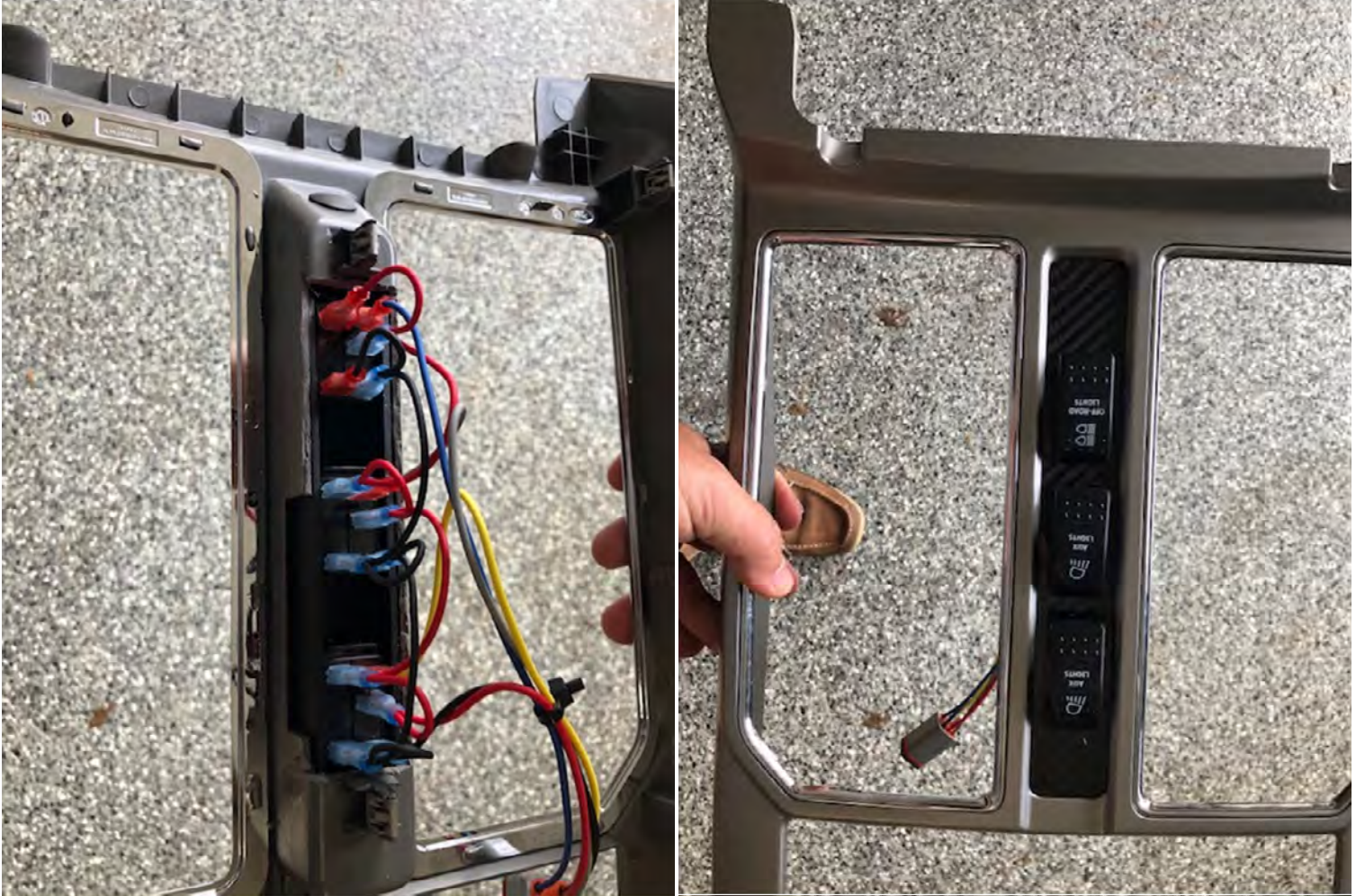


Trim Cup holder tray as shown. Level area around screws and up TO Slots. Leave the slots but trim up TO them. Run all the wires through and attach to the switch panel plug.



Trim the bottom of the top tray as shown UP TO the Clips. Then attach the Panel by drilling ¼" holes on each end and HOLD DOWN THE PANEL TIGHT as you do this for a snug fit. Then insert the push pins and attach the wires as instructed in the diagram.

Be sure the DRIVING lights switch is at the bottom (Closest to the console) and the BLUE wire is on it. The other AUG lights are prepped for later add ons...



Wire harnesses.... The Grill harness should run out behind the Drivers headlight. Plug the Main harness with Relay and connector into it. Ground it on the drivers fender well and zip tie it to an existing harness there beside the air box. Run the power over to the battery. Connect the BLUE wire to the blue wire on that harness. Leave the grey and yellow as extra hook ups to the switch panel later.

Last, connect the Red Power to the battery.