

Axiom Lock Installation Instructions for Scorpions



Package Includes:

- One Lock
- One Lock Cover
- Two Keys
- Two Cateye Clamps
- Two Bolts
- Two Nuts
- One Allen Wrench

Tools Required:

- One Adjustable Wrench



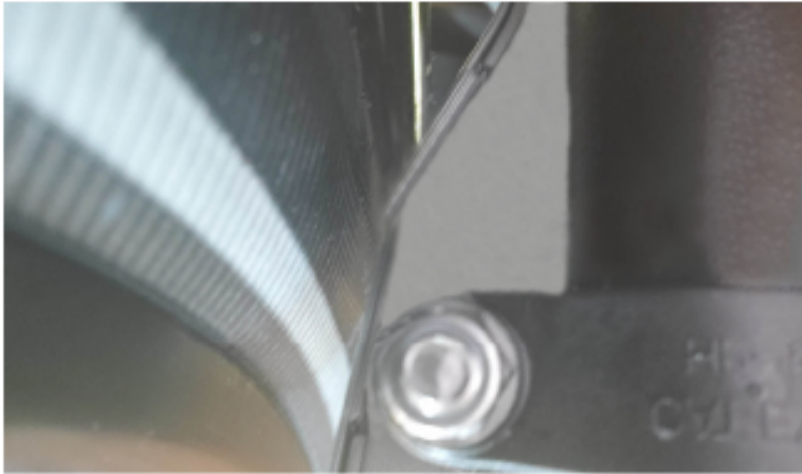
Open the Cateye Clamp package and install one clamp on each side of the chainstays in the area of the rear wheel (the included hardware and shims in the Cateye packages are not needed). Place the lock on top of the clamp, aligning the lock hole slots with the clamp hole .



Thread the two long bolts through the lock slots and Cateye Clamps on each side of the trike, as shown in the photo. Be sure everything is aligned properly, so the lock will close.

Axiom Lock Installation

Instructions for Scorpions (cont.)



Thread the nuts onto the bottom of the long bolts on the underside of the clamps. Using your adjustable wrench and the provided allen wrench, tighten the nuts and bolts, so the lock and clamps do not move.



Secure the black lock cover onto the top of the lock. It will just snap into place.



The completed setup.