

# Datasheet:



## SERVO FOR MICRO:BIT

V1D - 2020-02-22

Servo for micro:bit provides a really easy way to attach up to three servomotors to a BBC micro:bit.

The board requires a power supply or battery pack to provide 5 or 6V to the servomotors.

- Polarity protection
- GPIO over-current protection
- 3.3V regulated output to micro:bit



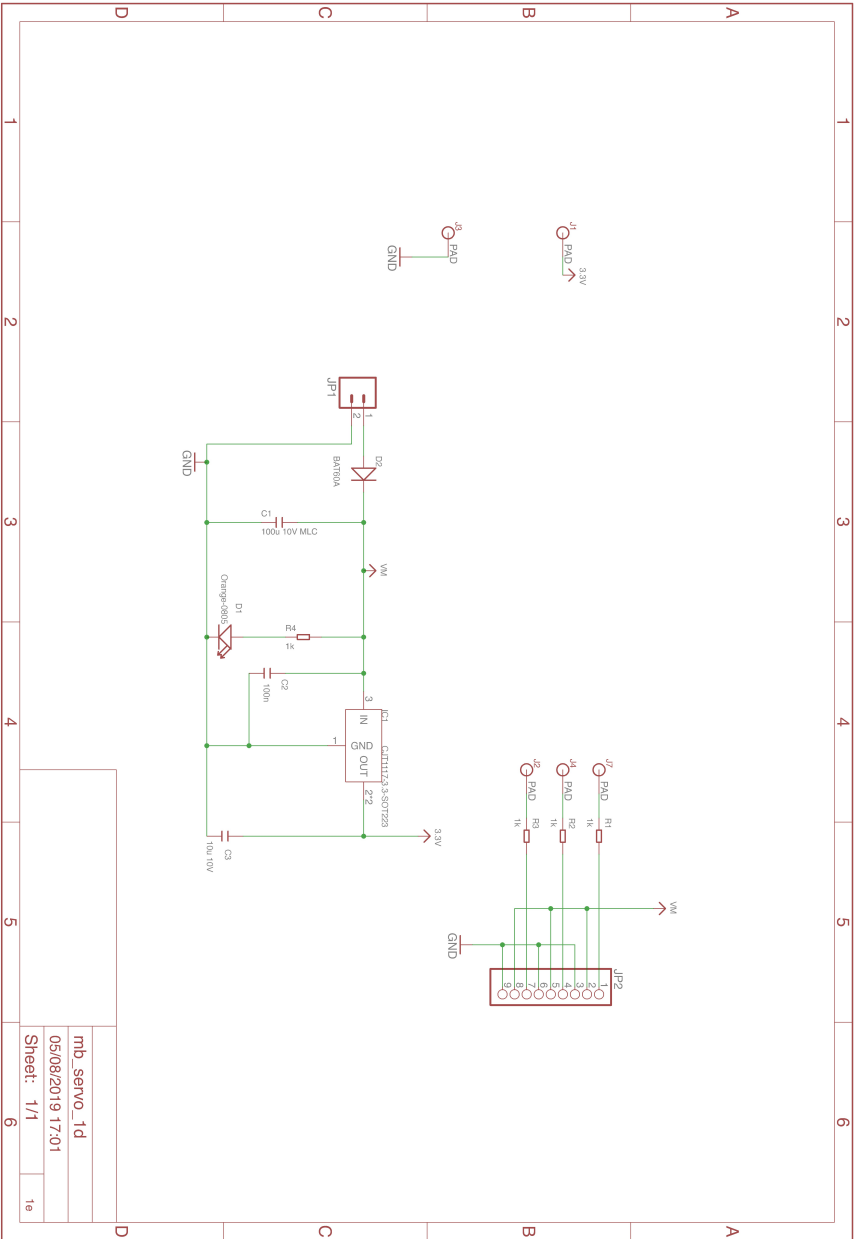
### Absolute Maximum Ratings

		Units
Input voltage	6	V
Max. output current to micro:bit	200	mA
Max. total continuous current to motors	2	A

### Electrical Characteristic

		Units
Input voltage to screw terminals	4.5 to 6	V
Servomotor reservoir capacitor	100	$\mu$ F





mb_servo_1d	
05/08/2019 17:01	
Sheet: 1/1	1e