

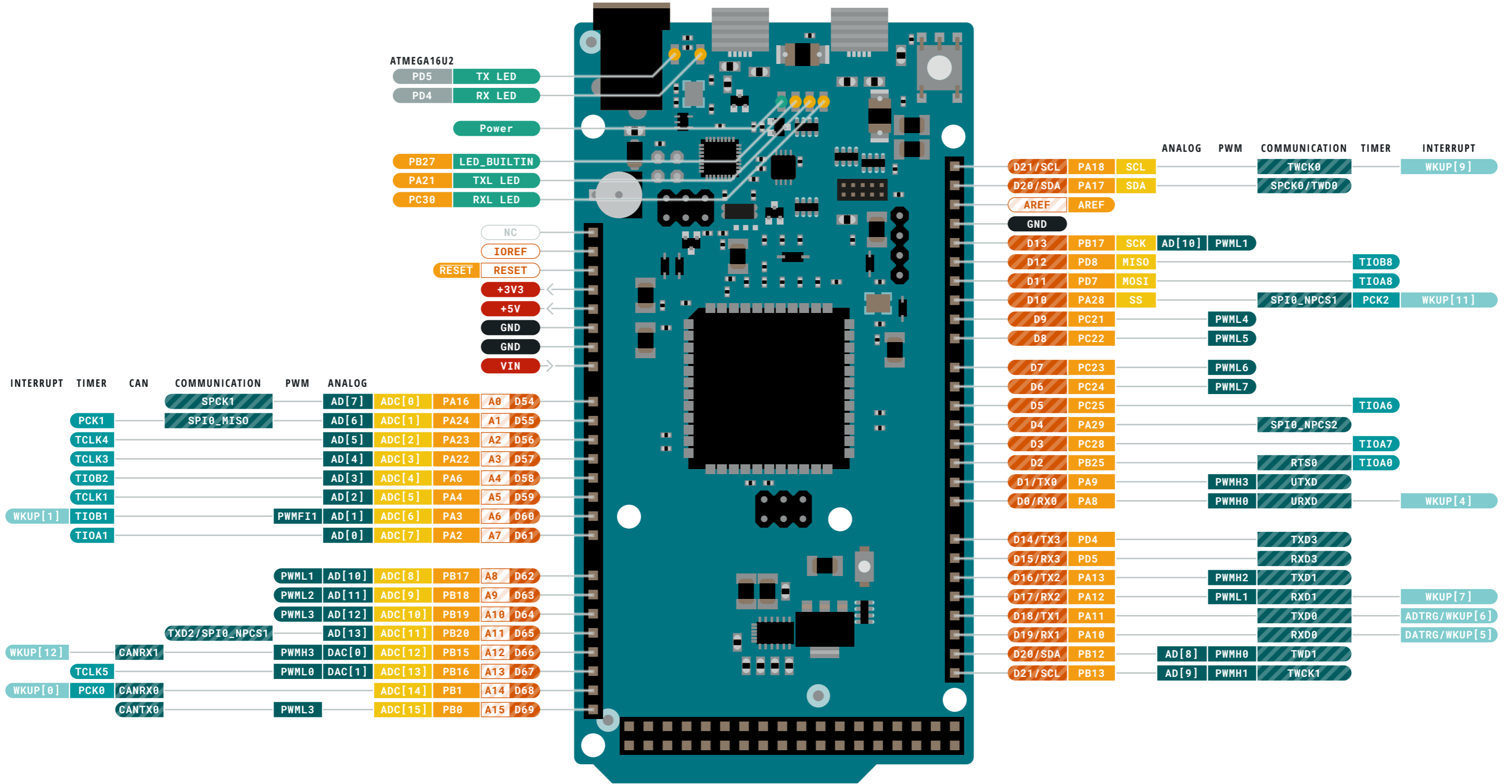
- Ground
- Power
- LED
- Internal Pin
- SWD Pin
- Digital Pin
- Analog Pin
- Other Pin
- Microcontroller's Port
- Default

⚠ TOTAL DC OUTPUT current per I/O lines is 130mA

VIN 6-20 V input to the board.

To check the maximum currents applicable per pins please see the datasheet at STORE.ARDUINO.CC/ARDUINO-DUE





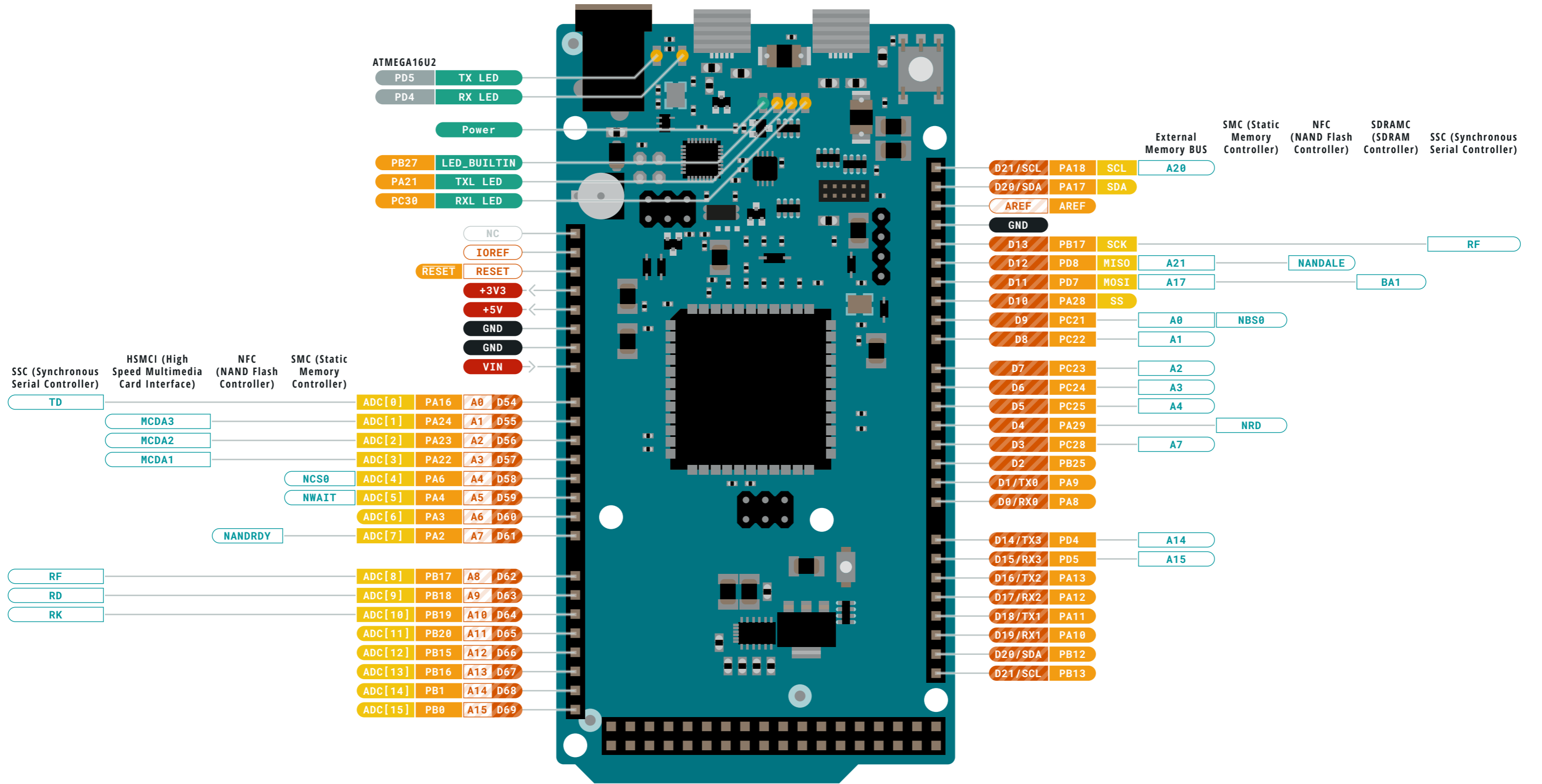
	Ground		Digital Pin		Analog
	Power		Analog Pin		Communication
	LED		Other Pin		Timer
	Internal Pin		Microcontroller's Port		Interrupt
	SWD Pin		Default		Memory

⚠ TOTAL DC OUTPUT current per I/O lines is 130mA

VIN 6-20 V input to the board.

To check the maximum currents applicable per pins please see the datasheet at STORE.ARDUINO.CC/ARDUINO-DUE





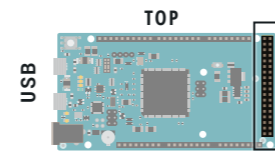
Ground	Digital Pin	Analog
Power	Analog Pin	Communication
LED	Other Pin	Timer
Internal Pin	Microcontroller's Port	Interrupt
SWD Pin	Default	Memory

TOTAL DC OUTPUT current per I/O lines is 130mA

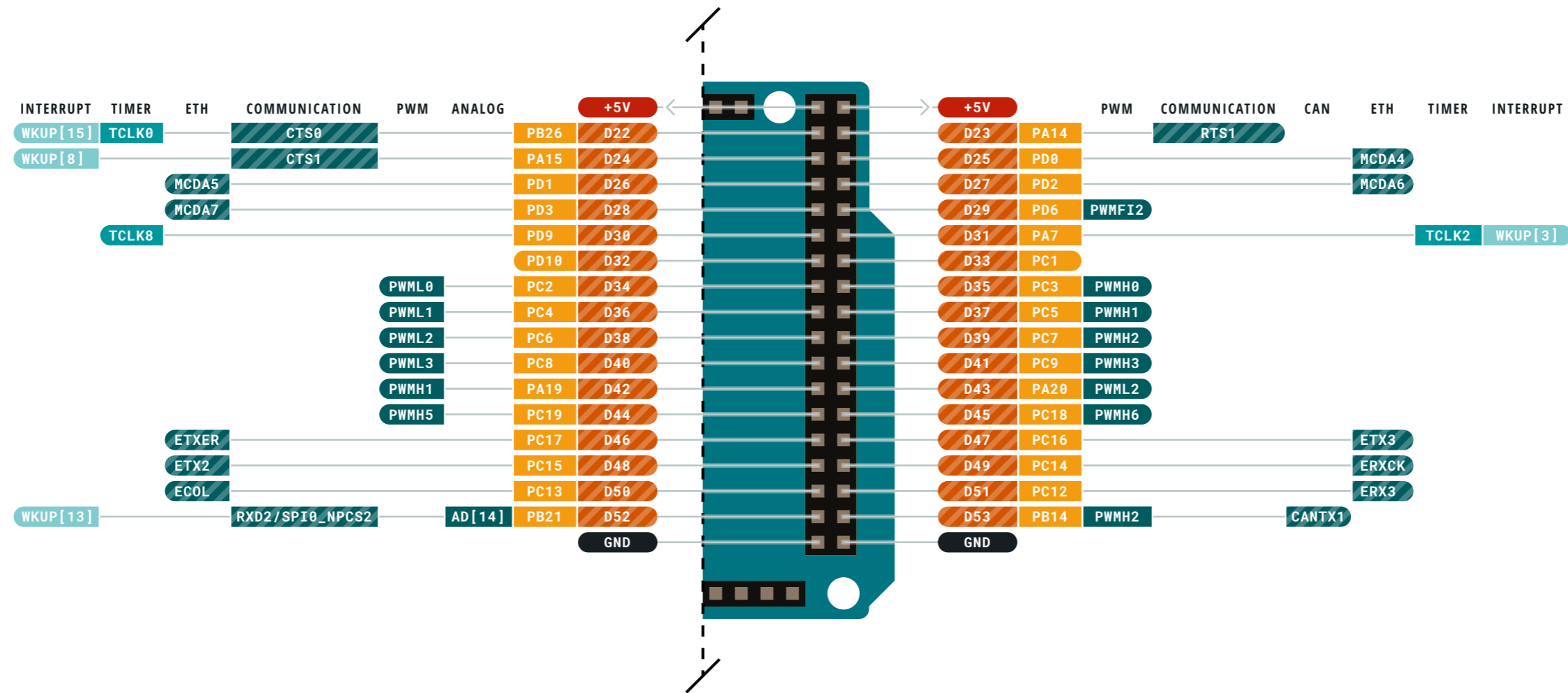
VIN 6-20 V input to the board.

To check the maximum currents applicable per pins please see the datasheet at STORE.ARDUINO.CC/ARDUINO-DUE





Digital pins D22-D53



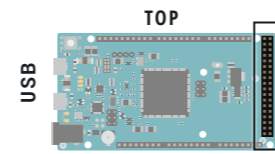
- Ground
- Power
- LED
- Internal Pin
- SWD Pin
- Digital Pin
- Analog Pin
- Other Pin
- Microcontroller's Port
- Default
- Analog
- Communication
- Timer
- Interrupt
- Memory

⚠ TOTAL DC OUTPUT current per I/O lines is 130mA

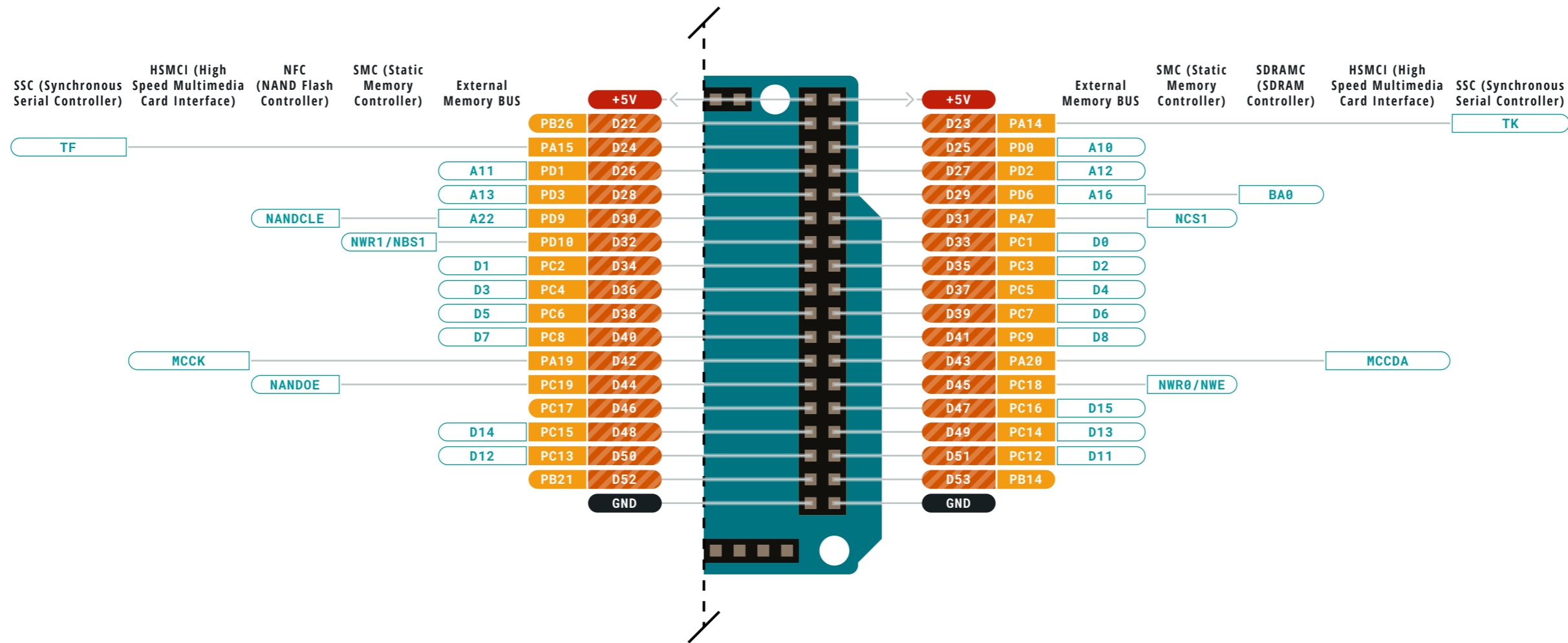
VIN 6-20 V input to the board.

To check the maximum currents applicable per pins please see the datasheet at STORE.ARDUINO.CC/ARDUINO-DUE





Digital pins D22-D53



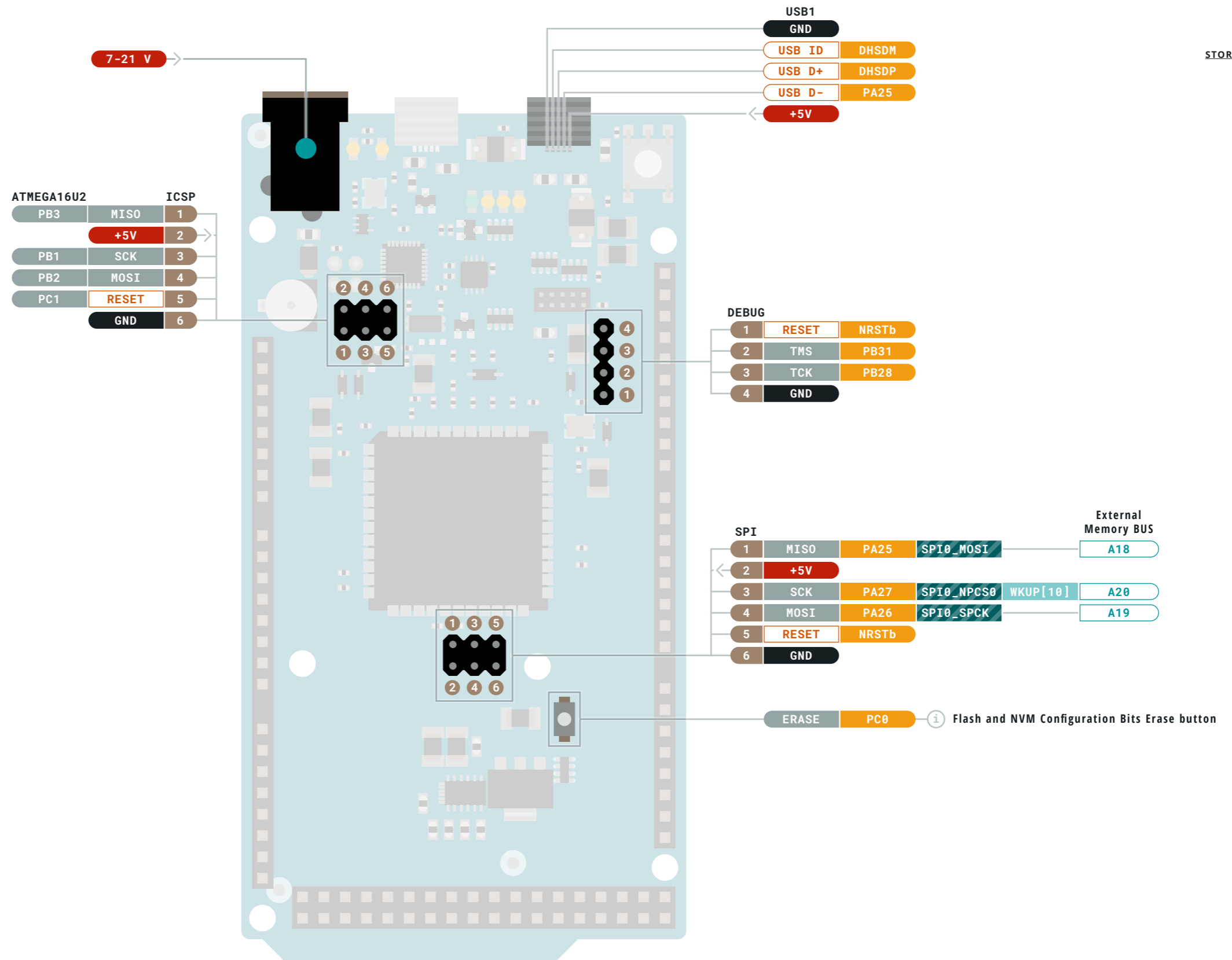
- Ground
- Power
- LED
- Internal Pin
- SWD Pin
- Digital Pin
- Analog Pin
- Other Pin
- Microcontroller's Port
- Default
- Analog
- Communication
- Timer
- Interrupt
- Memory

⚠ TOTAL DC OUTPUT current per I/O lines is 130mA

VIN 6-20 V input to the board.

To check the maximum currents applicable per pins please see the datasheet at STORE.ARDUINO.CC/ARDUINO-DUE





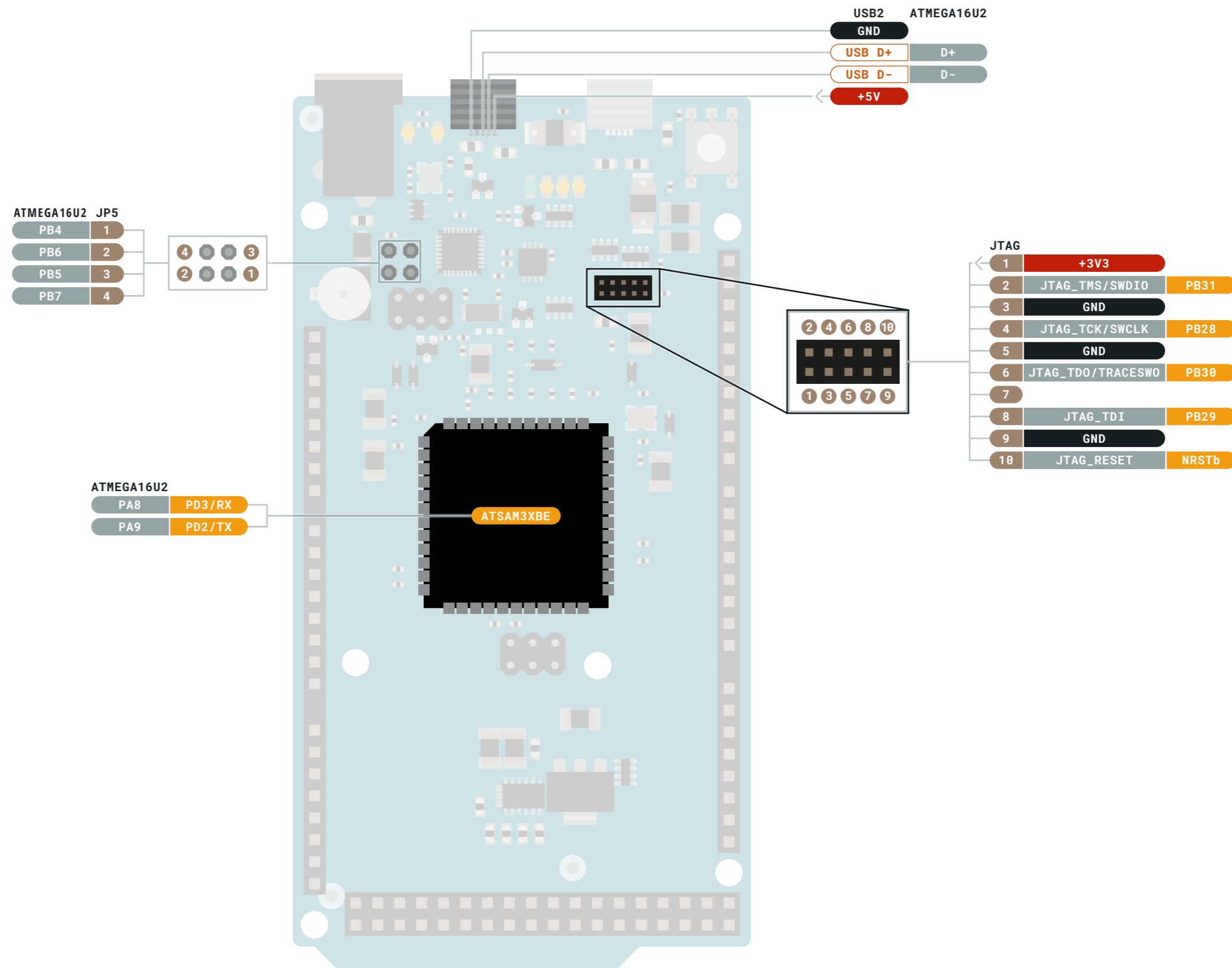
- Ground
- Power
- LED
- Internal Pin
- SWD Pin
- Digital Pin
- Analog Pin
- Other Pin
- Microcontroller's Port
- Default
- Analog
- Communication
- Timer
- Interrupt
- Memory

⚠ TOTAL DC OUTPUT current per I/O lines is 130mA

VIN 6-20 V input to the board.

To check the maximum currents applicable per pins please see the datasheet at STORE.ARDUINO.CC/ARDUINO-DUE





- Ground
- Power
- LED
- Internal Pin
- SWD Pin
- Digital Pin
- Analog Pin
- Other Pin
- Microcontroller's Port
- Default

⚠ TOTAL DC OUTPUT current per I/O lines is 130mA

VIN 6-20 V input to the board.

To check the maximum currents applicable per pins please see the datasheet at STORE.ARDUINO.CC/ARDUINO-DUE

