

Joanna Cave

*Spring Summer 2012*

*elpida*





*My grandmother on the far right with her two sisters.  
Ios Island 1964*

This collection for SS2012 is dedicated to my grandmother Sophia. She grew up on a remote Greek island in the Aegean where customs and traditions had remained unchanged for centuries. Now 83 she is gentle and wise with a classic sense of style. She has always led a simple life filled with daily rituals and eternal values. This collection is based on my beautiful memories of her. The many fairytales she told me, her beautiful patterned dresses and the little garden full of flowering pots which she lovingly tended, the old pieces of jewellery some passed down through generations each with its own story, which is now part of my own story and inspiration...



*theano*





*ruby*



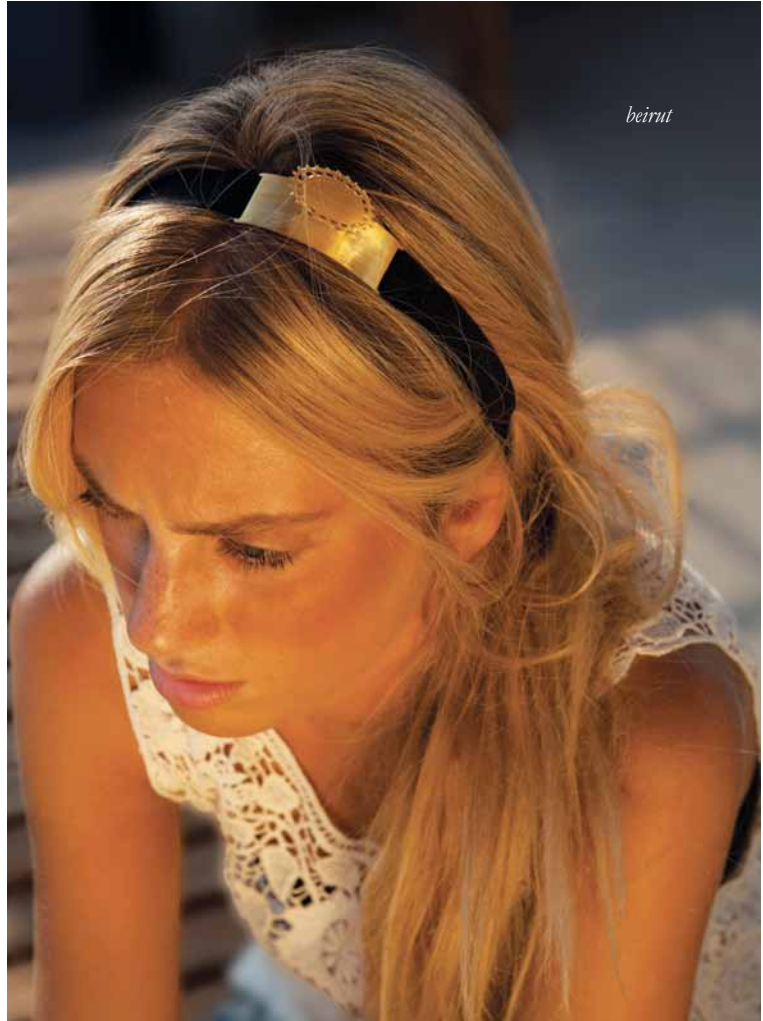
*rose*



*pavlina*



*clio*



*beirut*



*kakla*



*marti*



*belle*



*nefeli*



*maria*



*marni*

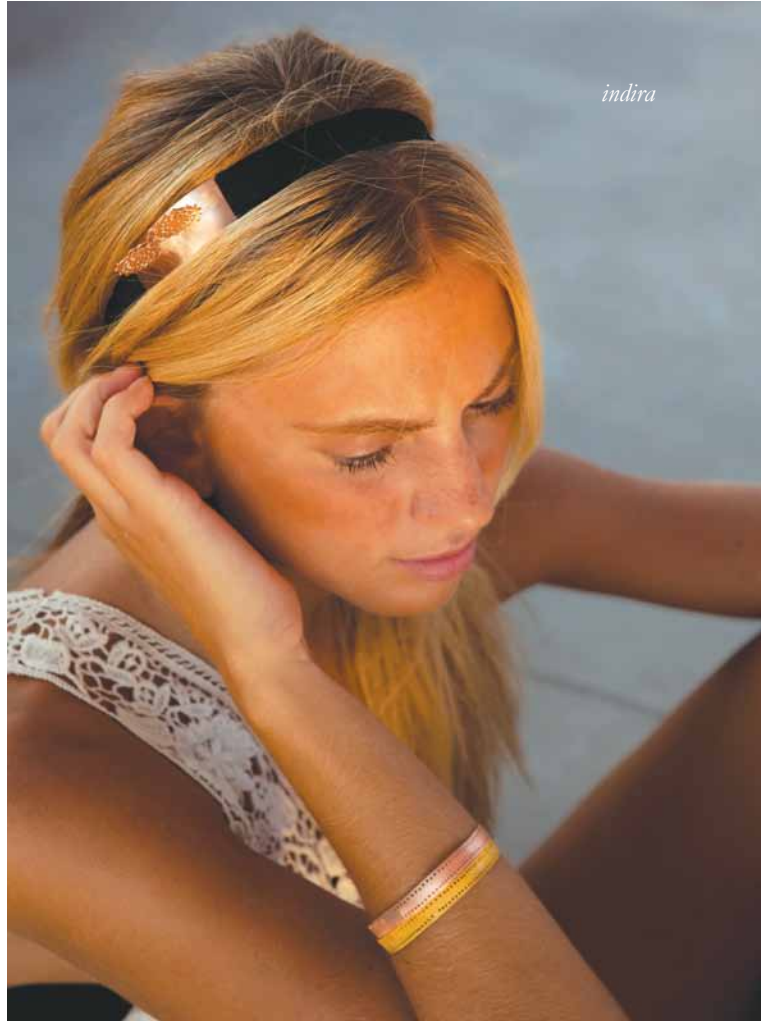




*liam*



*cbelsea*



*indira*



*kalypso*



*iris*



*galini*



This jewellery is made with much love and care using minimum 90% recycled silver by people who enjoy their job and are paid fairly. The pearls used are ethically produced high quality 'Japanese Akoya' respecting social and fairtrade guidelines.

C r e d i t s

---

Photography: Nandia Papanikolaou

Model: Mikaella Theofanopoulou

Layout: Kitch&Bold

[info@joannacave.com](mailto:info@joannacave.com)  
[www.joannacave.com](http://www.joannacave.com)