

SeaCutiesApplique

G:\!00!ATW Designs\SeaCutiesAppliq...\ATWFWW0967.pes
 9.88 cm x 5.12 cm
 3304 stitches : 7 colors

- Red
- Electric Blue
- Sky Blue
- White
- Cornflower Blue
- Flesh Pink
- Black



G:\!00!ATW Designs\SeaCutiesAppliq...\ATWFWW0968.pes
 9.70 cm x 7.96 cm
 3923 stitches : 8 colors

- Deep Rose
- Peacock Blue
- Ultramarine
- Cornflower Blue
- Sky Blue
- Cornflower Blue
- Pink
- Black



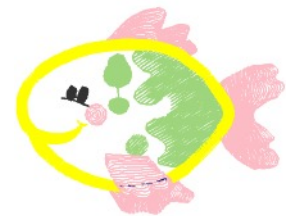
G:\!00!ATW Designs\SeaCutiesAppliq...\ATWFWW0969.pes
 10.00 cm x 8.16 cm
 6460 stitches : 9 colors

- Deep Rose
- Prussian Blue
- Light Lilac
- Salmon Pink
- Salmon Pink
- Beige
- Black
- White
- Light Brown



G:\!00!ATW Designs\SeaCutiesAppliq...\ATWFWW0970.pes
 9.84 cm x 7.58 cm
 5283 stitches : 8 colors

- Deep Rose
- Prussian Blue
- Salmon Pink
- Salmon Pink
- Mint Green
- Yellow
- Black
- Salmon Pink



Be sure and use thread to match fabric for
 Placement and tack down, so it will not
 Show under bottom fin.

G:\!00!ATW Designs\SeaCutiesAppliq...\ATWFWW0971.pes
 9.78 cm x 6.02 cm
 3651 stitches : 7 colors

- Red
- Prussian Blue
- White
- Cornflower Blue
- Electric Blue
- Black
- Flesh Pink



G:\!00!ATW Designs\SeaCutiesAppliq...\ATWFWW0972.pes
 7.90 cm x 9.88 cm
 5832 stitches : 7 colors

- Red
- Prussian Blue
- Amber Red
- Salmon Pink
- Black
- Flesh Pink
- White



SeaCutiesApplique

G:\!00!ATW Designs\SeaCutiesAppliq...\ATWFWW0973.pes
9.90 cm x 9.96 cm
4203 stitches : 8 colors

- Red
- Prussian Blue
- Salmon Pink
- Harvest Gold
- Salmon Pink
- Harvest Gold
- Black
- Flesh Pink



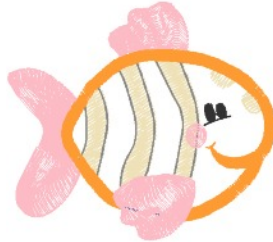
G:\!00!ATW Designs\SeaCutiesAppliq...\ATWFWW0974.pes
6.54 cm x 9.88 cm
5189 stitches : 7 colors

- Deep Rose
- Sky Blue
- Pumpkin
- Cream Yellow
- Harvest Gold
- Black
- Flesh Pink



G:\!00!ATW Designs\SeaCutiesAppliq...\ATWFWW0975.pes
9.78 cm x 8.68 cm
6500 stitches : 8 colors

- Red
- Electric Blue
- Salmon Pink
- Beige
- Gray
- Tangerine
- Black
- Salmon Pink



G:\!00!ATW Designs\SeaCutiesAppliq...\ATWFWW0976.pes
10.00 cm x 6.66 cm
5475 stitches : 11 colors

- Red
- Prussian Blue
- Russet Brown
- Dark Olive
- Beige
- Dark Olive
- Brass
- Dark Olive
- Flesh Pink
- Black
- White



Be sure and use thread to match fabric for
Placement and tack down, so it will not
Show under bottom fin.