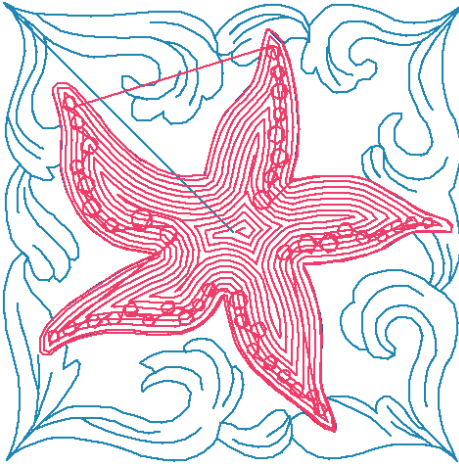


**ATWLM1307.pes**

Y:\Documents\1 ATW designs to digitize\Sea-Blocks-DS-LM\pes\  
 3 (3/4)" x 3 (3/4)" + 3 Trims  
 8159 stitches : 4 colors

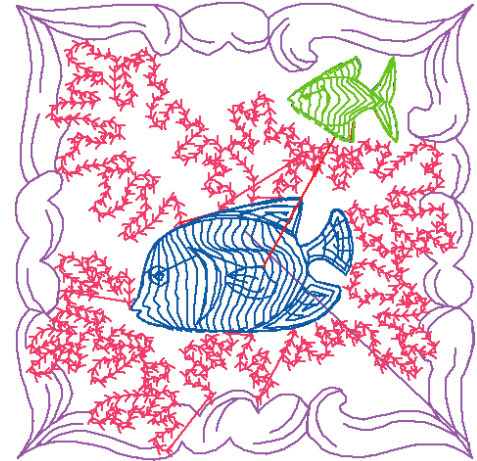
- Sky Blue
- Red
- Blue
- Carmine



**ATWLM1308.pes**

Y:\Documents\1 ATW designs to digitize\Sea-Blocks-DS-LM\pes\  
 3 (11/16)" x 3 (11/16)" + 3 Trims  
 8667 stitches : 8 colors

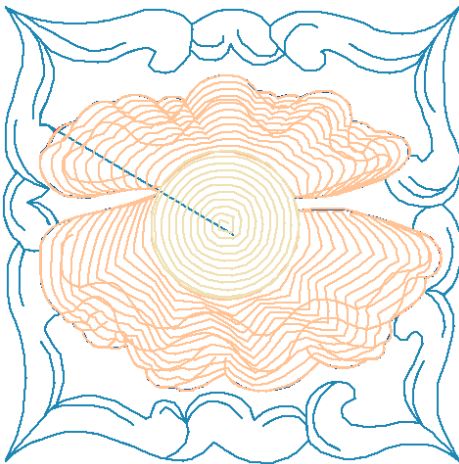
- Lilac
- Carmine
- Red
- Blue
- Electric Blue
- Red
- Blue
- Lime Green



**ATWLM1309.pes**

Y:\Documents\1 ATW designs to digitize\Sea-Blocks-DS-LM\pes\  
 3 (11/16)" x 3 (11/16)"  
 6681 stitches : 5 colors

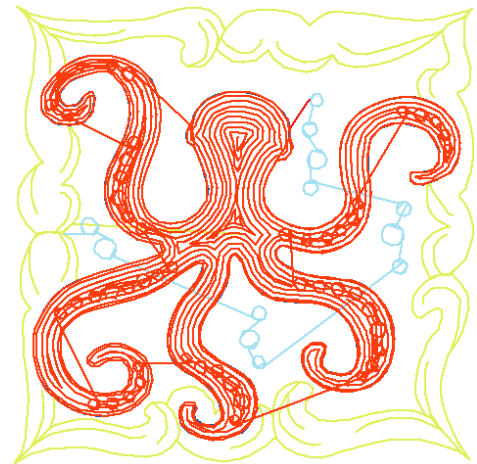
- Sky Blue
- Red
- Blue
- Cream Yellow
- Beige



**ATWLM1310.pes**

Y:\Documents\1 ATW designs to digitize\Sea-Blocks-DS-LM\pes\  
 3 (3/4)" x 3 (3/4)" + 6 Trims  
 9545 stitches : 5 colors

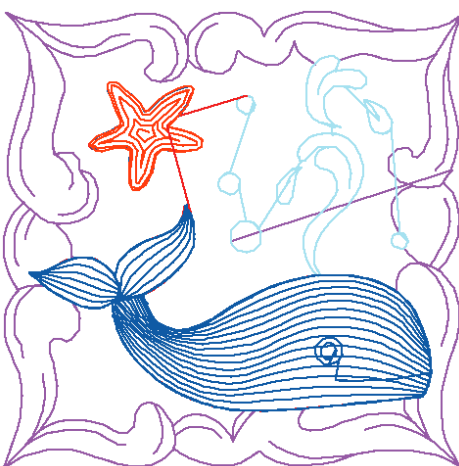
- Fresh Green
- Light Blue
- Red
- Blue
- Vermillion



**ATWLM1311.pes**

Y:\Documents\1 ATW designs to digitize\Sea-Blocks-DS-LM\pes\  
 3 (11/16)" x 3 (11/16)" + 2 Trims  
 5363 stitches : 8 colors

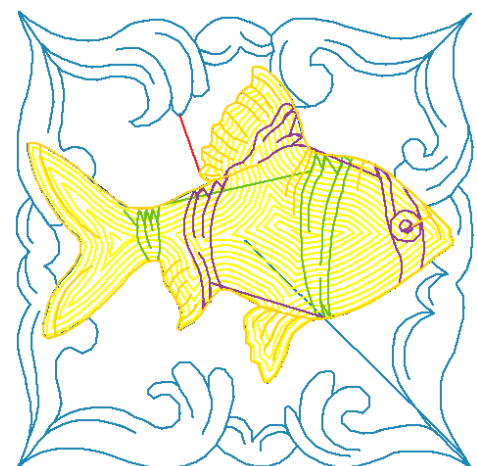
- Lilac
- Light Blue
- Red
- Blue
- Vermillion
- Red
- Blue
- Electric Blue



**ATWLM1312.pes**

Y:\Documents\1 ATW designs to digitize\Sea-Blocks-DS-LM\pes\  
 3 (11/16)" x 3 (3/4)" + 2 Trims  
 7069 stitches : 7 colors

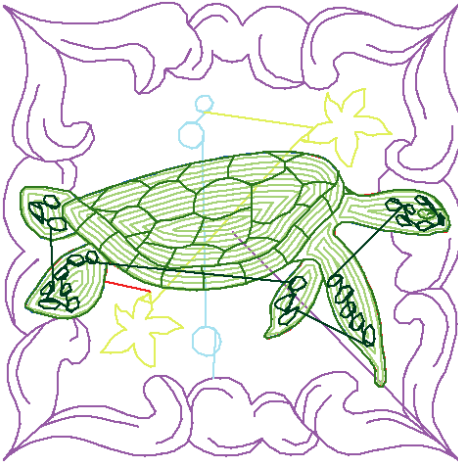
- Sky Blue
- Red
- Blue
- Yellow
- Lime Green
- Magenta
- Harvest Gold



**ATWLM1313.pes**

Y:\Documents\1 ATW designs to digitize\Sea-Blocks-DS-LM\pes\  
3 (11/16)" x 3 (11/16)" + 5 Trims  
7140 stitches : 8 colors

- Lilac
- Light Blue
- Fresh Green
- Red
- Blue
- Mint Green
- Moss Green
- Deep Green



**ATWLM1314.pes**

Y:\Documents\1 ATW designs to digitize\Sea-Blocks-DS-LM\pes\  
3 (3/4)" x 3 (3/4)" + 3 Trims  
7618 stitches : 6 colors

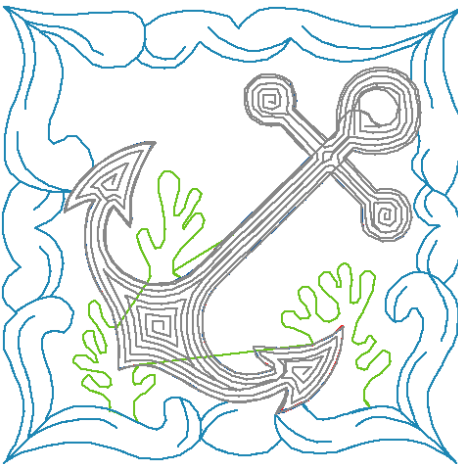
- Mint Green
- Lilac
- Cream Yellow
- Red
- Blue
- Tangerine



**ATWLM1315.pes**

Y:\Documents\1 ATW designs to digitize\Sea-Blocks-DS-LM\pes\  
3 (11/16)" x 3 (11/16)" + 1 Trim  
5957 stitches : 5 colors

- Lime Green
- Sky Blue
- Red
- Blue
- Gray



**ATWLM1316.pes**

Y:\Documents\1 ATW designs to digitize\Sea-Blocks-DS-LM\pes\  
3 (3/4)" x 3 (11/16)" + 6 Trims  
7903 stitches : 10 colors

- Mint Green
- Light Blue
- Red
- Blue
- Beige
- Orange
- Electric Blue
- Vermillion
- Light Brown
- Dark Brown

