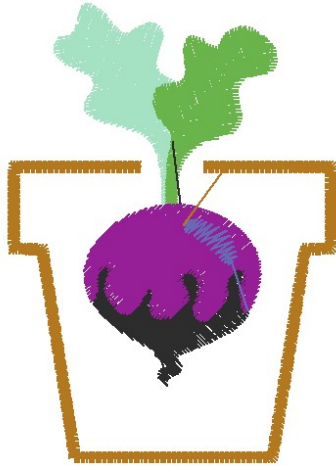


**ATWLM2228.pes**

C:\Users\raind\OneDrive\Documents\1 Designs to Digitize\Potted Vege...  
 2 (3/16)" x 3 "  
 4325 stitches : 6 colors

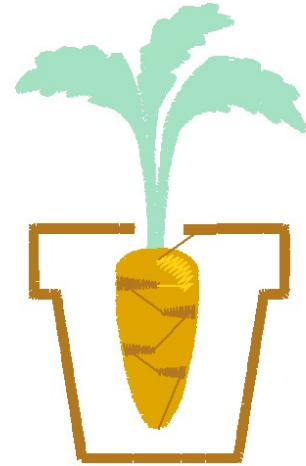
-  Seacrest
-  Leaf Green
-  Dark Gray
-  Magenta
-  Wisteria Violet
-  Light Brown



**ATWLM2229.pes**

C:\Users\raind\OneDrive\Documents\1 Designs to Digitize\Potted Vege...  
 2 (3/8)" x 3 (13/16)"  
 5140 stitches : 5 colors

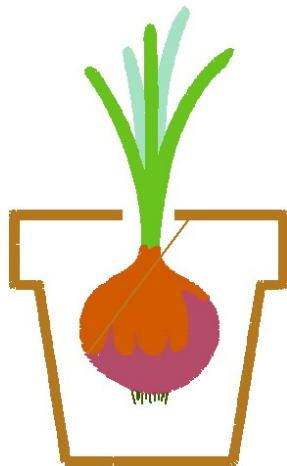
-  Seacrest
-  Deep Gold
-  Light Brown
-  Harvest Gold
-  Light Brown



**ATWLM2230.pes**




C:\Users\raind\OneDrive\Documents\1 Designs to Digitize\Potted Vege...  
 2 (5/16)" x 3 (13/16)"  
 4551 stitches : 6 colors

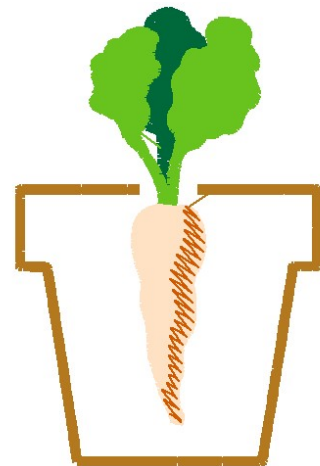
-  Seacrest
-  Lime Green
-  Dark Olive
-  Amber Red
-  Reddish Brown
-  Light Brown



**ATWLM2231.pes**

C:\Users\raind\OneDrive\Documents\1 Designs to Digitize\Potted Vege...  
 2 (1/2)" x 3 (13/16)"  
 4787 stitches : 5 colors

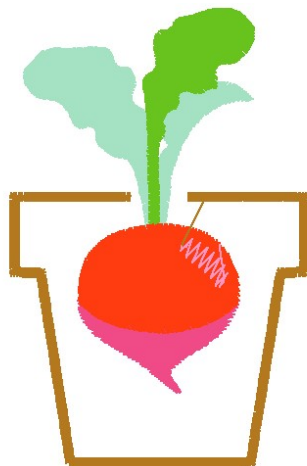
-  Emerald Green
-  Lime Green
-  Linen
-  Reddish Brown
-  Light Brown



**ATWLM2232.pes**

C:\Users\raind\OneDrive\Documents\1 Designs to Digitize\Potted Vege...  
 2 (1/2)" x 3 (13/16)"  
 5564 stitches : 6 colors

-  Seacrest
-  Lime Green
-  Deep Rose
-  Vermillion
-  Pink
-  Light Brown



**ATWLM2233.pes**

C:\Users\raind\OneDrive\Documents\1 Designs to Digitize\Potted Vege...  
 2 (3/16)" x 3 (13/16)"  
 5330 stitches : 7 colors

-  Emerald Green
-  Leaf Green
-  Linen
-  Reddish Brown
-  Magenta
-  Wisteria Violet
-  Light Brown

