

ATWLM0966.pes

Y:\Documents\1 ATW designs to digitize\A Fancy Hot Air Balloons\pes\
4 (11/16)" x 6 (13/16)" + 4 Trims
9667 stitches : 5 colors

- Deep Rose
- Pewter
- Light Blue
- Sky Blue
- Yellow



ATWLM0967.pes

Y:\Documents\1 ATW designs to digitize\A Fancy Hot Air Balloons\pes\
4 (9/16)" x 6 (13/16)" + 11 Trims
8393 stitches : 5 colors

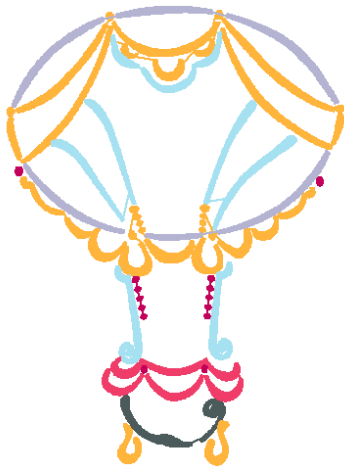
- Pewter
- Mint Green
- Pumpkin
- Deep Rose
- Dark Fuschia



ATWLM0968.pes

Y:\Documents\1 ATW designs to digitize\A Fancy Hot Air Balloons\pes\
5 " x 6 (13/16)" + 10 Trims
8352 stitches : 6 colors

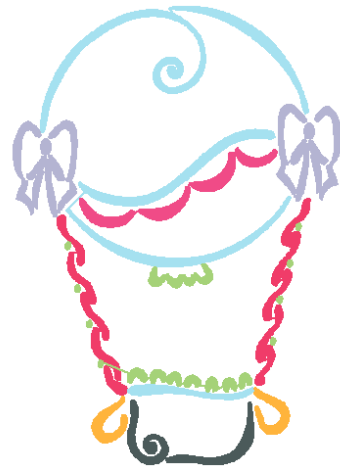
- Pewter
- Pumpkin
- Lavender
- Light Blue
- Carmine
- Dark Fuschia



ATWLM0969.pes

Y:\Documents\1 ATW designs to digitize\A Fancy Hot Air Balloons\pes\
4 (7/8)" x 6 (13/16)" + 9 Trims
7797 stitches : 7 colors

- Pumpkin
- Pewter
- Carmine
- Mint Green
- Light Blue
- Lavender
- Deep Rose



ATWLM0970.pes

Y:\Documents\1 ATW designs to digitize\A Fancy Hot Air Balloons\pes\
4 (1/4)" x 6 (13/16)" + 8 Trims
10169 stitches : 5 colors

- Pewter
- Lavender
- Pumpkin
- Light Blue
- Carmine



ATWLM0971.pes

Y:\Documents\1 ATW designs to digitize\A Fancy Hot Air Balloons\pes\
4 (3/8)" x 6 (13/16)" + 8 Trims
12369 stitches : 4 colors

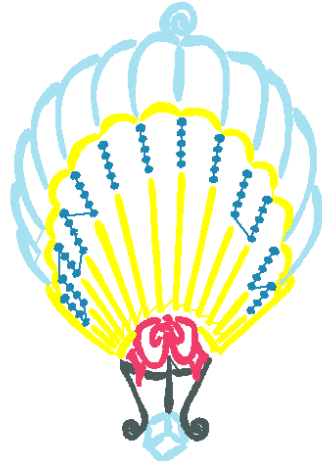
- Carmine
- Pewter
- Light Blue
- Yellow



ATWLM0972.pes

Y:\Documents\1 ATW designs to digitize\A Fancy Hot Air Balloons\pes\
4 (5/8)" x 6 (13/16)" + 12 Trims
10832 stitches : 5 colors

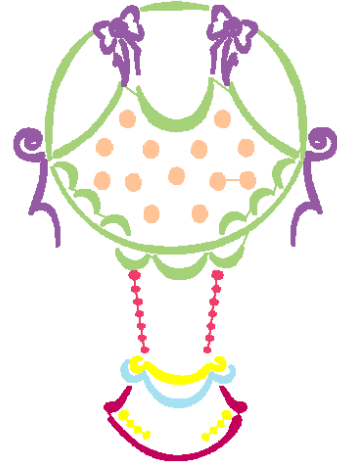
- Light Blue
- Pewter
- Carmine
- Yellow
- Sky Blue



ATWLM0973.pes

Y:\Documents\1 ATW designs to digitize\A Fancy Hot Air Balloons\pes\
4 (13/16)" x 6 (13/16)" + 18 Trims
7769 stitches : 7 colors

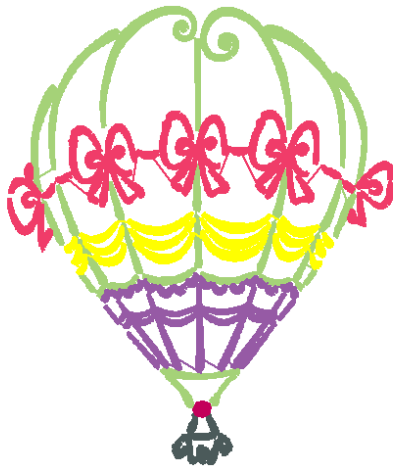
- Carmine
- Light Blue
- Dark Fuschia
- Yellow
- Mint Green
- Lilac
- Applique Pos.



ATWLM0974.pes

Y:\Documents\1 ATW designs to digitize\A Fancy Hot Air Balloons\pes\
4 (7/8)" x 5 (13/16)" + 3 Trims
12906 stitches : 6 colors

- Pewter
- Dark Fuschia
- Mint Green
- Yellow
- Carmine
- Lilac



ATWLM0975.pes

Y:\Documents\1 ATW designs to digitize\A Fancy Hot Air Balloons\pes\
4 (15/16)" x 6 (13/16)" + 11 Trims
10259 stitches : 6 colors

- Pewter
- Dark Fuschia
- Light Blue
- Yellow
- Mint Green
- Carmine

