

Curly Angel Blocks

J:\!00!ATW Designs\Curly Angel Bloc...\ATWFWW0187.pes

3 (11/16)" x 3 (5/8)"

12623 stitches : 11 colors

-  Light Blue
-  Beige
-  Linen
-  Seacrest
-  Fresh Green
-  Light Blue
-  Beige
-  Amber Red
-  Silver
-  Beige
-  Deep Gold



J:\!00!ATW Designs\Curly Angel Bloc...\ATWFWW0188.pes

3 (3/4)" x 3 (7/16)"

13621 stitches : 11 colors

-  Light Blue
-  Beige
-  Linen
-  Gray
-  Cream Yellow
-  Linen
-  Seacrest
-  Light Blue
-  Beige
-  Deep Gold
-  Dark Brown

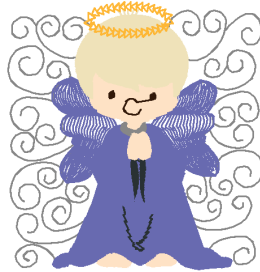


J:\!00!ATW Designs\Curly Angel Bloc...\ATWFWW0189.pes

3 (1/2)" x 3 (5/8)"

12630 stitches : 11 colors

-  Gray
-  Wisteria Violet
-  Linen
-  Wisteria Violet
-  Dark Gray
-  Wisteria Violet
-  Gray
-  Linen
-  Beige
-  Dark Brown
-  Orange



J:\!00!ATW Designs\Curly Angel Bloc...\ATWFWW0190.pes

3 (3/4)" x 3 (3/4)"

13279 stitches : 12 colors

-  Light Blue
-  Red
-  Russet Brown
-  Dark Gray
-  Linen
-  Wisteria Violet
-  Dark Gray
-  Light Blue
-  Linen
-  Reddish Brown
-  Deep Gold
-  Dark Brown



J:\!00!ATW Designs\Curly Angel Bloc...\ATWFWW0191.pes

3 (11/16)" x 3 (9/16)"

11108 stitches : 12 colors

-  Deep Gold
-  Orange
-  Amber Red
-  Harvest Gold
-  Cream Brown
-  Black
-  Deep Gold
-  Reddish Brown
-  White
-  Reddish Brown
-  Harvest Gold
-  Amber Red



J:\!00!ATW Designs\Curly Angel Bloc...\ATWFWW0192.pes

3 (3/4)" x 3 (11/16)"

12668 stitches : 12 colors


-  Deep Gold
-  Harvest Gold
-  Deep Gold
-  Linen
-  Amber Red
-  Sky Blue
-  Electric Blue
-  Dark Gray
-  Linen
-  Dark Brown
-  Amber Red
-  Deep Gold



Curly Angel Blocks

J:\!00!ATW Designs\Curly Angel Bloc...\ATWFWW0193.pes

3 (5/16)" x 3 (11/16)"
10955 stitches : 11 colors

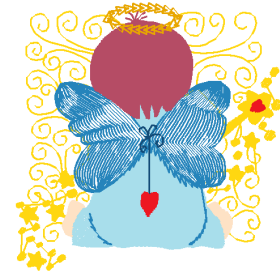
-  Orange
-  Linen
-  Light Blue
-  Linen
-  Sky Blue
-  Cornflower Blue
-  Light Blue
-  Red
-  Beige
-  Amber Red
-  Dark Brown



J:\!00!ATW Designs\Curly Angel Bloc...\ATWFWW0194.pes

3 (3/4)" x 3 (3/4)"
12052 stitches : 8 colors

-  Harvest Gold
-  Linen
-  Light Blue
-  Sky Blue
-  Amber Red
-  Deep Gold
-  Peacock Blue
-  Red



J:\!00!ATW Designs\Curly Angel Bloc...\ATWFWW0195.pes







3 (5/8)" x 3 (5/8)"
12053 stitches : 11 colors

-  Cornflower Blue
-  Red
-  Dark Brown
-  Linen
-  Cream Brown
-  Cornflower Blue
-  Cream Brown
-  Dark Brown
-  Reddish Brown
-  Orange
-  Deep Gold



J:\!00!ATW Designs\Curly Angel Bloc...\ATWFWW0196.pes

3 (5/8)" x 3 (3/4)"
11280 stitches : 13 colors

-  Beige
-  Harvest Gold
-  Warm Gray
-  Linen
-  Amber Red
-  Cream Yellow
-  Beige
-  Cream Yellow
-  Linen
-  Reddish Brown
-  Harvest Gold
-  Amber Red
-  Russet Brown



J:\!00!ATW Designs\Curly Angel Bloc...\ATWFWW0197.pes



3 (1/4)" x 1 (15/16)"
2999 stitches : 3 colors

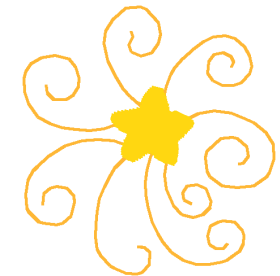
-  Deep Gold
-  Harvest Gold
-  Deep Gold



J:\!00!ATW Designs\Curly Angel Bloc...\ATWFWW0198.pes

1 (13/16)" x 1 (15/16)"
1189 stitches : 2 colors

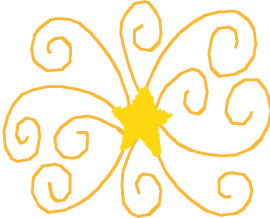
-  Orange
-  Harvest Gold



Curly Angel Blocks

J:\!00!ATW Designs\Curly Angel Bloc...\ATWFWW0199.pes
1 (11/16)" x 1 (3/8)"
1046 stitches : 2 colors

- Orange
- Harvest Gold



J:\!00!ATW Designs\Curly Angel Bloc...\ATWFWW0200.pes
2 (5/8)" x 2 (5/16)"
2183 stitches : 2 colors

- Orange
- Harvest Gold

