

C:\Users\Maria\Documents\ATW-DigiTeam\1048-Outline Fall Time-CLIP\ATWMAS0595.pes

9.52 cm x 8.32 cm

5298 stitches : 9 colors

- RA Poly 9150 Mosstone
- RA Poly 5564 Maize
- RA Poly 9038 Deviled Orange
- RA Poly 5769 Dark Texas Orange
- RA Poly 5774 Rattan
- RA Poly 5772 Auburn
- RA Poly 5784 Silvery Gray
- RA Poly 5778 Light Cocoa
- RA Poly 5596 Black



C:\Users\Maria\Documents\ATW-DigiTeam\1048-Outline Fall Time-CLIP\ATWMAS0596.pes

9.52 cm x 9.50 cm

6603 stitches : 8 colors

- RA Poly 5551 Brown
- RA Poly 5778 Light Cocoa
- RA Poly 5772 Auburn
- RA Poly 5672 Dark Brown
- RA Poly 9042 Brownstone
- RA Poly 5695 Cornsilk
- RA Poly 5784 Silvery Gray
- RA Poly 5596 Black



C:\Users\Maria\Documents\ATW-DigiTeam\1048-Outline Fall Time-CLIP\ATWMAS0597.pes

9.48 cm x 9.12 cm

5865 stitches : 10 colors

- RA Poly 9151 Alpine Green
- RA Poly 9150 Mosstone
- RA Poly 9042 Brownstone
- RA Poly 5772 Auburn
- RA Poly 5769 Dark Texas Orange
- RA Poly 9066 Vibrant Orange
- RA Poly 5695 Cornsilk
- RA Poly 5596 Black
- RA Poly 5778 Light Cocoa
- RA Poly 5551 Brown



C:\Users\Maria\Documents\ATW-DigiTeam\1048-Outline Fall Time-CLIP\ATWMAS0598.pes

6.32 cm x 9.50 cm

6270 stitches : 8 colors

- RA Poly 9151 Alpine Green
- RA Poly 5778 Light Cocoa
- RA Poly 9042 Brownstone
- RA Poly 5565 Charcoal
- RA Poly 5772 Auburn
- RA Poly 5672 Dark Brown
- RA Poly 5596 Black
- RA Poly 5695 Cornsilk



C:\Users\Maria\Documents\ATW-DigiTeam\1048-Outline Fall Time-CLIP\ATWMAS0599.pes

8.12 cm x 9.48 cm

5222 stitches : 8 colors

- RA Poly 9151 Alpine Green
- RA Poly 9150 Mosstone
- RA Poly 5778 Light Cocoa
- RA Poly 5672 Dark Brown
- RA Poly 5524 Beige
- RA Poly 9042 Brownstone
- RA Poly 5596 Black
- RA Poly 5695 Cornsilk



C:\Users\Maria\Documents\ATW-DigiTeam\1048-Outline Fall Time-CLIP\ATWMAS0600.pes

9.52 cm x 7.40 cm

5369 stitches : 8 colors

- RA Poly 5784 Silvery Gray
- RA Poly 9150 Mosstone
- RA Poly 5772 Auburn
- RA Poly 5551 Brown
- RA Poly 5769 Dark Texas Orange
- RA Poly 9038 Deviled Orange
- RA Poly 9042 Brownstone
- RA Poly 5695 Cornsilk

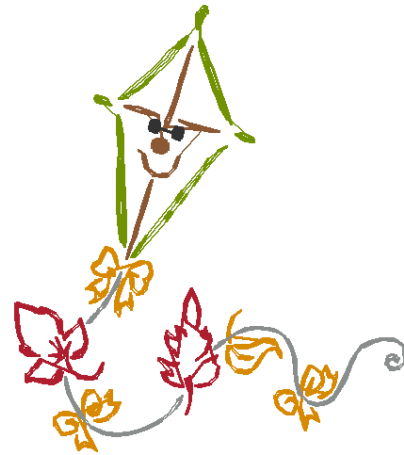


C:\Users\Maria\Documents\ATW-DigiTeam\1048-Outline Fall Time-CLIP\ATWMAS0601.pes

8.32 cm x 9.48 cm

3502 stitches : 6 colors

- RA Poly 5512 Sun Gold
- RA Poly 5772 Auburn
- RA Poly 5784 Silvery Gray
- RA Poly 5778 Light Cocoa
- RA Poly 5596 Black
- RA Poly 9150 Mosstone



C:\Users\Maria\Documents\ATW-DigiTeam\1048-Outline Fall Time-CLIP\ATWMAS0602.pes

9.50 cm x 7.84 cm

4408 stitches : 6 colors

- RA Poly 5695 Cornsilk
- RA Poly 5778 Light Cocoa
- RA Poly 5672 Dark Brown
- RA Poly 9150 Mosstone
- RA Poly 9042 Brownstone
- RA Poly 5772 Auburn



C:\Users\Maria\Documents\ATW-DigiTeam\1048-Outline Fall Time-CLIP\ATWMAS0603.pes

9.50 cm x 6.54 cm

4161 stitches : 8 colors

- RA Poly 9150 Mosstone
- RA Poly 9151 Alpine Green
- RA Poly 5774 Rattan
- RA Poly 5596 Black
- RA Poly 5778 Light Cocoa
- RA Poly 5769 Dark Texas Orange
- RA Poly 5695 Cornsilk
- RA Poly 9042 Brownstone



C:\Users\Maria\Documents\ATW-DigiTeam\1048-Outline Fall Time-CLIP\ATWMAS0604.pes

4.72 cm x 9.54 cm

3485 stitches : 5 colors

- RA Poly 5771 Shimmering Gold
- RA Poly 5769 Dark Texas Orange
- RA Poly 9150 Mosstone
- RA Poly 9042 Brownstone
- RA Poly 5772 Auburn

