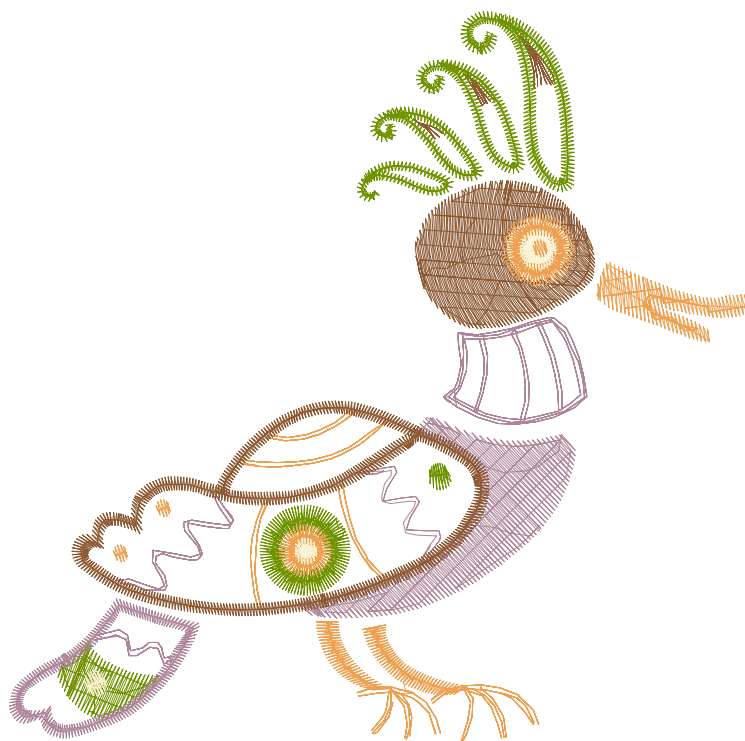


Design Name: atwflc0256	Customer Name:	Machine Set: Default	
Size=97.80 mm x 97.00 mm	Stitch No.=7095	ChangeColor No.=6	Trim No.=26

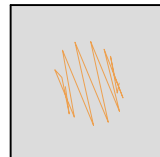
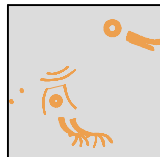
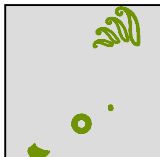
No.	Thread	Length(m)
1.	 Robison Anton Super Brite Poly.Light Cocoa.5778	2.19
2.	 Robison Anton Super Brite Poly.Green Dust.5757	2.77
3.	 Robison Anton Super Brite Poly.Pansy Purple.9098	3.75
4.	 Robison Anton Super Brite Poly.Ashley Gold.5701	2.97
5.	 Robison Anton Super Brite Poly.Celery.5616	0.24
6.	 Robison Anton Super Brite Poly.Ashley Gold.5701	0.02
7.	 Robison Anton Super Brite Poly.Light Cocoa.5778	1.85

ZOOM 100%



## Color Sequence:

Th.1(Light Cocoa.5778) Th.2(Green Dust.5757) Th.3(Pansy Purple.9098) Th.4(Ashley Gold.5701) Th.5(Celery.5616) Th.6(Ashley Gold.5701) Th.7(Light Cocoa.5778)

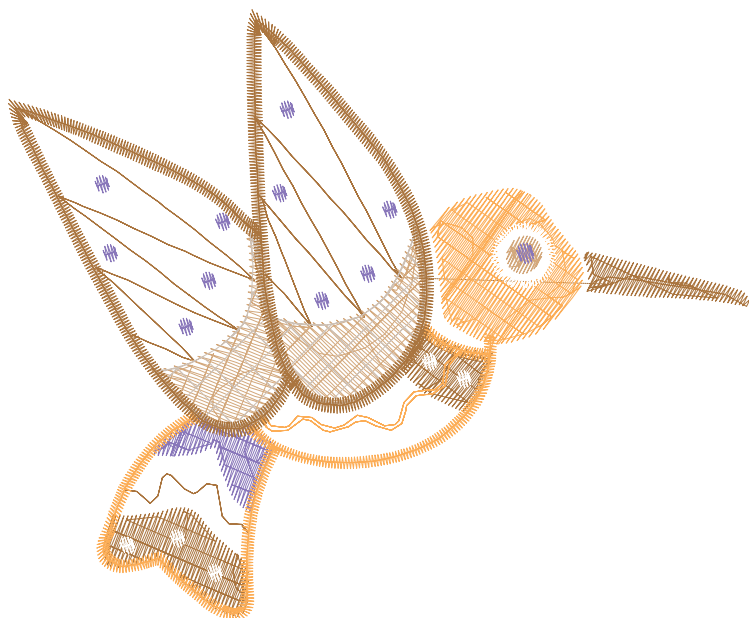


Design Name: atwflc0257	Customer Name:	Machine Set: Default	
Size=98.00 mm x 80.80 mm	Stitch No.=5750	ChangeColor No.=8	Trim No.=24

**Design Note:**

No.	Thread	Length(m)
1.	Robison Anton Super Brite Poly.Mauve.5587	0.73
2.	Robison Anton Super Brite Poly.Beige.5524	2.80
3.	Robison Anton Super Brite Poly.Tan.5573	1.42
4.	Robison Anton Super Brite Poly.Basket Beige.9126	0.71
5.	Robison Anton Super Brite Poly.Honey.5547	3.03
6.	Robison Anton Super Brite Poly.Natural White.5642	0.47
7.	Robison Anton Super Brite Poly.Beige.5524	2.59
8.	Robison Anton Super Brite Poly.Tan.5573	0.12
9.	Robison Anton Super Brite Poly.Mauve.5587	0.03

ZOOM 100%




**Color Sequence:**

Th.1(Mauve.5587)	Th.2(Beige.5524)	Th.3(Tan.5573)	Th.4(Basket Beige.9126)	Th.5(Honey.5547)	Th.6(Natural White.5642)	Th.7(Beige.5524)	Th.8(Tan.5573)
Th.9(Mauve.5587)							

Design Name: atwflc0258	Customer Name:	Machine Set: Default	
Size=97.60 mm x 65.80 mm	Stitch No.=6347	ChangeColor No.=7	Trim No.=17

**Design Note:**

No.	Thread	Length(m)
1.	 Robison Anton Super Brite Poly.French Toast.9086	0.42
2.	 Robison Anton Super Brite Poly.Golden Chair.9050	3.84
3.	 Robison Anton Super Brite Poly.Pansy Purple.9098	2.33
4.	 Robison Anton Super Brite Poly.Arden Lavender.9067	1.63
5.	 Robison Anton Super Brite Poly.Light Cocoa.5778	1.41
6.	 Robison Anton Super Brite Poly.Natural White.5642	0.73
7.	 Robison Anton Super Brite Poly.Green Dust.5757	2.74
8.	 Robison Anton Super Brite Poly.Autumn Green.5843	0.68

ZOOM 100%



## Color Sequence:



# Native Birds

Author Name: Florence

Print At: 2016-4- 7

Design File: atwflc0259.gen

Design Name: atwflc0259	Customer Name:	Machine Set: Default	
Size=62.60 mm x 97.70 mm	Stitch No.=5211	ChangeColor No.=8	Trim No.=16

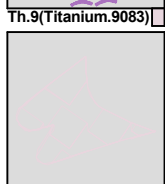
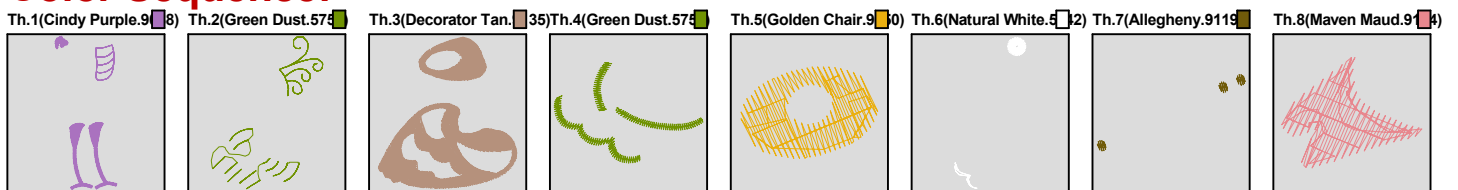
**Design Note:**

No.	Thread	Length(m)
1.	 Robison Anton Super Brite Poly.Cindy Purple.9088	1.74
2.	 Robison Anton Super Brite Poly.Green Dust.5757	0.83
3.	 Robison Anton Super Brite Poly.Decorator Tan.9135	5.83
4.	 Robison Anton Super Brite Poly.Green Dust.5757	0.55
5.	 Robison Anton Super Brite Poly.Golden Chair.9050	0.42
6.	 Robison Anton Super Brite Poly.Natural White.5642	0.24
7.	 Robison Anton Super Brite Poly.Allegheny.9119	0.07
8.	 Robison Anton Super Brite Poly.Maven Maud.9164	0.46
9.	 Robison Anton Super Brite Poly.Titanium.9083	0.21

ZOOM 100%



## Color Sequence:

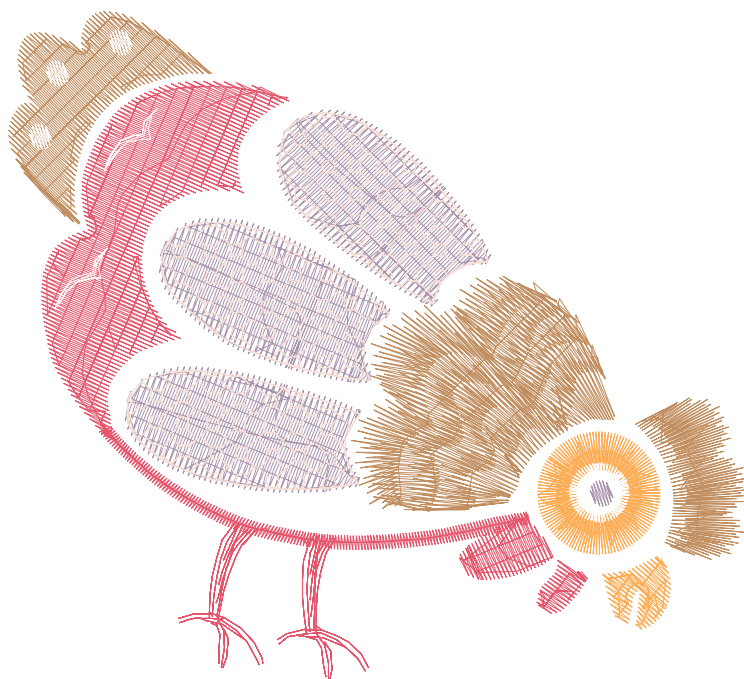


Design Name: atwflc0260	Customer Name:	Machine Set: Default	
Size=97.70 mm x 88.40 mm	Stitch No.=9227	ChangeColor No.=5	Trim No.=19

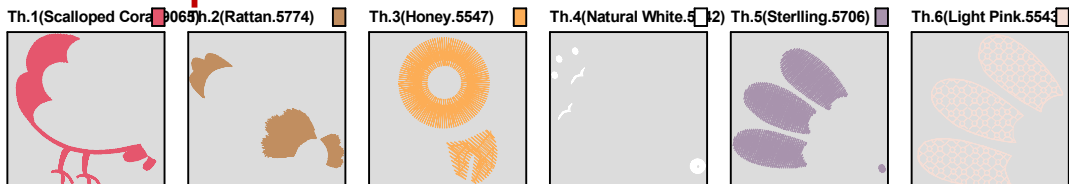
**Design Note:**

No.	Thread	Length(m)
1.	 Robison Anton Super Brite Poly.Scalloped Coral.9065	5.36
2.	 Robison Anton Super Brite Poly.Rattan.5774	7.17
3.	 Robison Anton Super Brite Poly.Honey.5547	1.60
4.	 Robison Anton Super Brite Poly.Natural White.5642	0.57
5.	 Robison Anton Super Brite Poly.Sterling.5706	4.28
6.	 Robison Anton Super Brite Poly.Light Pink.5543	2.59

ZOOM 100%



## Color Sequence:



Design Name: atwflc0261	Customer Name:	Machine Set: Default	
Size=90.40 mm x 97.70 mm	Stitch No.=6812	ChangeColor No.=5	Trim No.=13

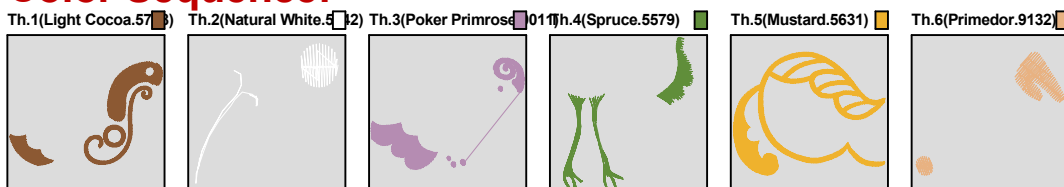
**Design Note:**

No.	Thread	Length(m)
1.	 Robison Anton Super Brite Poly.Light Cocoa.5778	3.32
2.	Robison Anton Super Brite Poly.Natural White.5642	0.20
3.	 Robison Anton Super Brite Poly.Poker Primrose.9011	2.96
4.	 Robison Anton Super Brite Poly.Spruce.5579	2.36
5.	 Robison Anton Super Brite Poly.Mustard.5631	4.12
6.	 Robison Anton Super Brite Poly.Primedor.9132	0.44

ZOOM 100%



## Color Sequence:

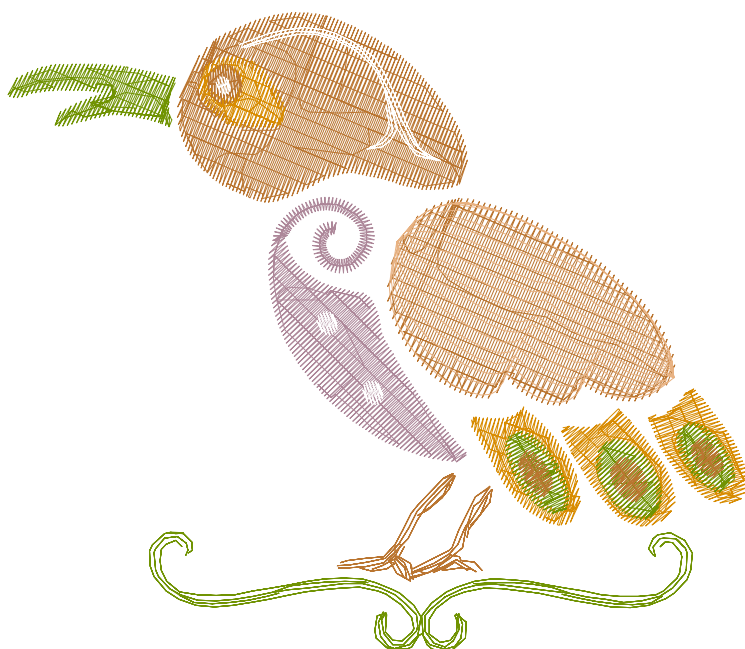


Design Name: atwflc0262	Customer Name:	Machine Set: Default	
Size=97.90 mm x 84.40 mm	Stitch No.=7292	ChangeColor No.=6	Trim No.=17

**Design Note:**

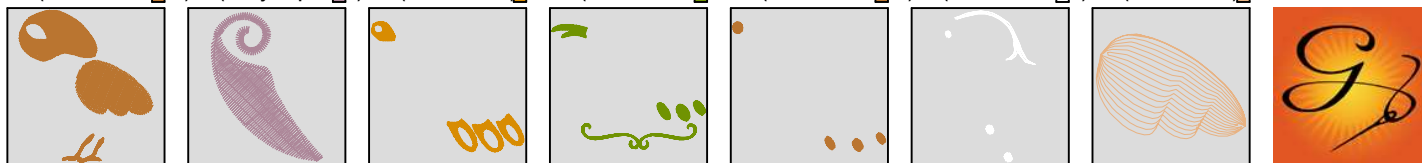
No.	Thread	Length(m)
1.	 Robison Anton Super Brite Poly.Sweet Dreams.9130	6.47
2.	 Robison Anton Super Brite Poly.Pansy Purple.9098	1.80
3.	 Robison Anton Super Brite Poly.Sun Gold.5512	1.88
4.	 Robison Anton Super Brite Poly.Green Dust.5757	3.34
5.	 Robison Anton Super Brite Poly.Sweet Dreams.9130	0.46
6.	 Robison Anton Super Brite Poly.Natural White.5642	0.43
7.	 Robison Anton Super Brite Poly.Primedor.9132	0.92

ZOOM 100%



## Color Sequence:

Th.1(Sweet Dreams.9130) Th.2(Pansy Purple.9098) Th.3(Sun Gold.5512) Th.4(Green Dust.5757) Th.5(Sweet Dreams.9130) Th.6(Natural White.5642) Th.7(Primedor.9132)

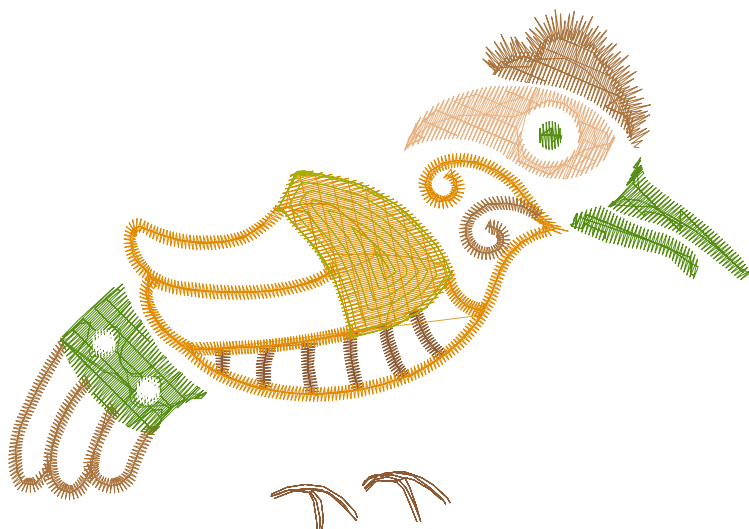


Design Name: atwflc0263	Customer Name:	Machine Set: Default	
Size=98.00 mm x 68.80 mm	Stitch No.=5102	ChangeColor No.=6	Trim No.=12

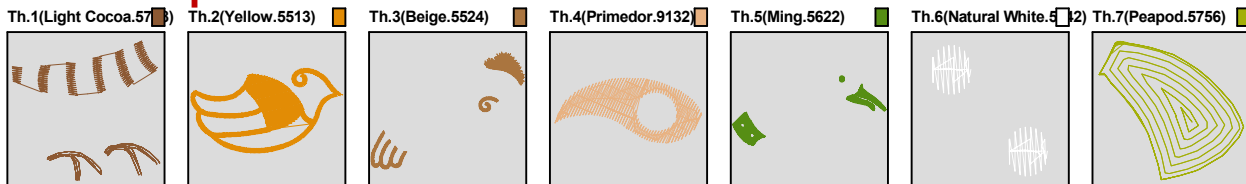
**Design Note:**

No.	Thread	Length(m)
1.	Robison Anton Super Brite Poly.Light Cocoa.5778	0.99
2.	Robison Anton Super Brite Poly.Yellow.5513	3.58
3.	Robison Anton Super Brite Poly.Beige.5524	1.92
4.	Robison Anton Super Brite Poly.Primedor.9132	0.89
5.	Robison Anton Super Brite Poly.Ming.5622	1.87
6.	Robison Anton Super Brite Poly.Natural White.5642	0.12
7.	Robison Anton Super Brite Poly.Peapod.5756	0.83

ZOOM 100%



## Color Sequence:





Design Name: atwflc0264	Customer Name:	Machine Set: Default	
Size=83.00 mm x 97.40 mm	Stitch No.=5562	ChangeColor No.=6	Trim No.=17

**Design Note:**

No.	Thread	Length(m)
1.	Robison Anton Super Brite Poly.Tan.5573	2.06
2.	Robison Anton Super Brite Poly.Yellow.5513	0.56
3.	Robison Anton Super Brite Poly.Green Dust.5757	3.72
4.	Robison Anton Super Brite Poly.Happy Trail.9087	1.65
5.	Robison Anton Super Brite Poly.Pastel Green.5855	1.03
6.	Robison Anton Super Brite Poly.Russian Sage.9016	1.80
7.	Robison Anton Super Brite Poly.Natural White.5642	0.04

ZOOM 100%



**Color Sequence:**

Th.1(Tan.5573) Th.2(Yellow.5513) Th.3(Green Dust.5757) Th.4(Happy Trail.9087) Th.5(Pastel Green.5855) Th.6(Russian Sage.9016) Th.7(Natural White.5642)

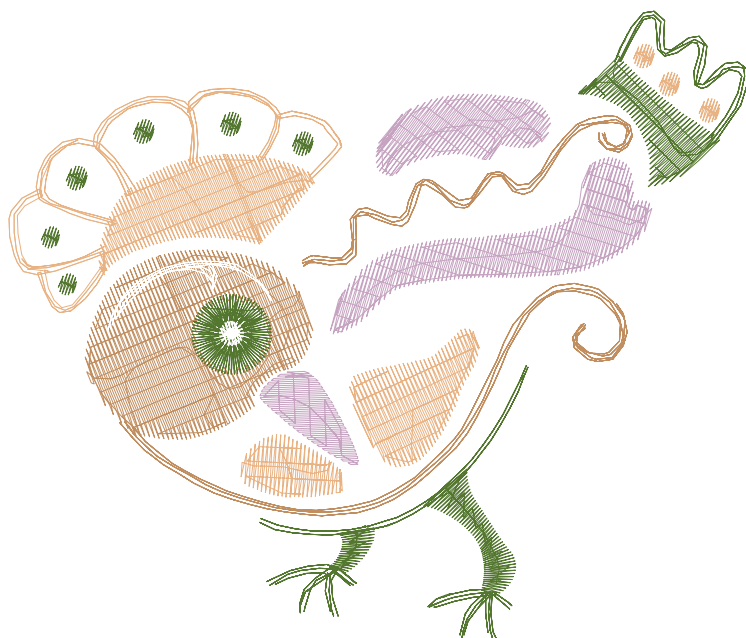


Design Name: atwflc0265	Customer Name:	Machine Set: Default	
Size=97.80 mm x 83.20 mm	Stitch No.=7322	ChangeColor No.=4	Trim No.=20

**Design Note:**

No.	Thread	Length(m)
1.	 Robison Anton Super Brite Poly.Rattan.5774	4.37
2.	 Robison Anton Super Brite Poly.Bonaire Green.9152	3.68
3.	 Robison Anton Super Brite Poly.Russian Sage.9016	2.68
4.	 Robison Anton Super Brite Poly.Primedor.9132	3.44
5.	Robison Anton Super Brite Poly.Natural White.5642	0.27

ZOOM 100%



**Color Sequence:**

