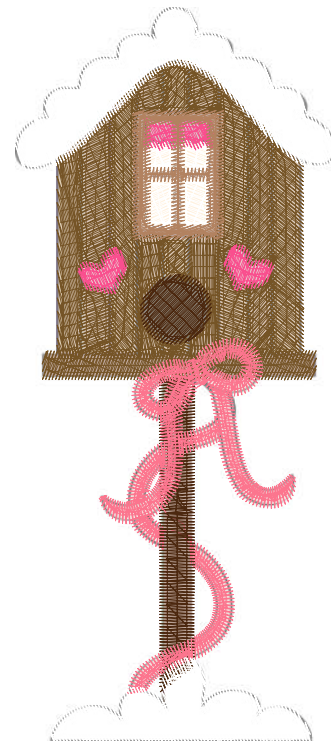


Design Name: atwjt12121	Customer Name:	Machine Set: Default	
Size=42.4 mm x 97.9 mm (1.67 inch x 3.85 inch) Stitch No.=8374 ChangeColor No.=8 Trim No.=10			

ZOOM 100%

No.	Thread	Length(m)
1.	Robison Anton Super Brite Poly.Bronze.5815	7.71
2.	Robison Anton Super Brite Poly.Natural White.5642	0.85
3.	Robison Anton Super Brite Poly.Horizon Pink.9168	0.68
4.	Robison Anton Super Brite Poly.Happy Trail.9087	1.18
5.	Robison Anton Super Brite Poly.Dark Brown.5672	0.98
6.	Robison Anton Super Brite Poly.Neon Pink.5711	2.34
7.	Robison Anton Super Brite Poly.Dark Brown.5672	0.65
8.	Robison Anton Super Brite Poly.Neon Pink.5711	0.19
9.	Robison Anton Super Brite Poly.Natural White.5642	3.84



Color Sequence:



Design Name: atwjt12122	Customer Name:	Machine Set: Default	
Size=76.4 mm x 97.1 mm (3.01 inch x 3.82 inch) Stitch No.=16445 ChangeColor No.=8 Trim No.=11			

ZOOM 100%

No.	Thread	Length(m)
1.	Robison Anton Super Brite Poly.Dark Brown.5672	15.83
2.	Robison Anton Super Brite Poly.Natural White.5642	2.37
3.	Robison Anton Super Brite Poly.Neon Pink.5711	1.30
4.	Robison Anton Super Brite Poly.Carbondale.9128	4.91
5.	Robison Anton Super Brite Poly.Ice Ballet.9028	2.36
6.	Robison Anton Super Brite Poly.Dark Brown.5672	0.64
7.	Robison Anton Super Brite Poly.Natural White.5642	8.58
8.	Robison Anton Super Brite Poly.Golden Chair.9050	0.57
9.	Robison Anton Super Brite Poly.Black Eyed Susie.5861	0.36



Color Sequence:

Th.1,2,3(Dark Brown.5672) Th.4(Natural White.5642) Th.5(Neon Pink.5711) Th.6(Carbondale.9128) Th.7(Ice Ballet.9028) Th.8(Dark Brown.5672) Th.9(Natural White.5642) Th.10(Golden Chair.9050) Th.11(Black Eyed Susie.5861)



Design Name: atwjt12123	Customer Name:	Machine Set: Default
Size=89.4 mm x 99.2 mm (3.52 inch x 3.91 inch) Stitch No.=16017 ChangeColor No.=12 Trim No.=27		

ZOOM 100%

No.	Thread	Length(m)
1.	Robison Anton Super Brite Poly.Jockey Red.5581	0.20
2.	Robison Anton Super Brite Poly.Baltic Blue.5741	0.21
3.	Robison Anton Super Brite Poly.Natural White.5642	5.33
4.	Robison Anton Super Brite Poly.Glow.5534	2.65
5.	Robison Anton Super Brite Poly.Black Eyed Susie.5861	0.33
6.	Robison Anton Super Brite Poly.Glow.5534	4.11
7.	Robison Anton Super Brite Poly.Black Eyed Susie.5861	1.43
8.	Robison Anton Super Brite Poly.Jockey Red.5581	2.57
9.	Robison Anton Super Brite Poly.Brownstone.9042	1.34
10.	Robison Anton Super Brite Poly.Dolphin Blue.5829	9.14
11.	Robison Anton Super Brite Poly.Fire Blue.5736	9.11
12.	Robison Anton Super Brite Poly.Grilled Orange.9072	0.57
13.	Robison Anton Super Brite Poly.Black.5596	0.34



Color Sequence:

Th.1(Jockey Red.5581) Th.2(Baltic Blue.5741) Th.3(Natural White.5642) Th.4(Glow.5534) Th.5(Black Eyed Susie.5861) Th.6(Glow.5534) Th.7(Black Eyed Susie.5861) Th.8(Jockey Red.5581) Th.9(Brownstone.9042) Th.10(Dolphin Blue.5829) Th.11(Fire Blue.5736) Th.12(Grilled Orange.9072) Th.13(Black.5596)

Design Name: atwjt12124	Customer Name:	Machine Set: Default	
Size=74.5 mm x 99.0 mm (2.93 inch x 3.90 inch) Stitch No.=8873 ChangeColor No.=11 Trim No.=9			

Design Note:

ZOOM 100%

No.	Thread	Length(m)
1.	Robison Anton Super Brite Poly.TH Burgundy.5908	0.31
2.	Robison Anton Super Brite Poly.PN Navy (24).5824	0.31
3.	Robison Anton Super Brite Poly.Natural White.5642	7.74
4.	Robison Anton Super Brite Poly.Saturn Gray.5785	0.45
5.	Robison Anton Super Brite Poly.Baltic Blue.5741	4.94
6.	Robison Anton Super Brite Poly.China Blue.5823	3.24
7.	Robison Anton Super Brite Poly.Coronation Gold.9014	0.48
8.	Robison Anton Super Brite Poly.Black Eyed Susie.5861	2.89
9.	Robison Anton Super Brite Poly.Dark Brown.5672	0.95
10.	Robison Anton Super Brite Poly.Grilled Orange.9072	0.70
11.	Robison Anton Super Brite Poly.Sun Gold.5512	0.44
12.	Robison Anton Super Brite Poly.Black.5596	0.34



Color Sequence:

Th.1(TH Burgundy.5908) Th.2(PN Navy (24).5824) Th.3(Natural White.5642) Th.4(Saturn Gray.5785) Th.5(Baltic Blue.5741) Th.6(China Blue.5823) Th.7(Coronation Gold.9014) Th.8(Black Eyed Susie.5861) Th.9(Dark Brown.5672) Th.10(Grilled Orange.9072) Th.11(Sun Gold.5512) Th.12(Black.5596)

Design Name: atwjt12125	Customer Name:	Machine Set: Default
Size=88.2 mm x 99.4 mm (3.47 inch x 3.91 inch) Stitch No.=10021 ChangeColor No.=13 Trim No.=11		

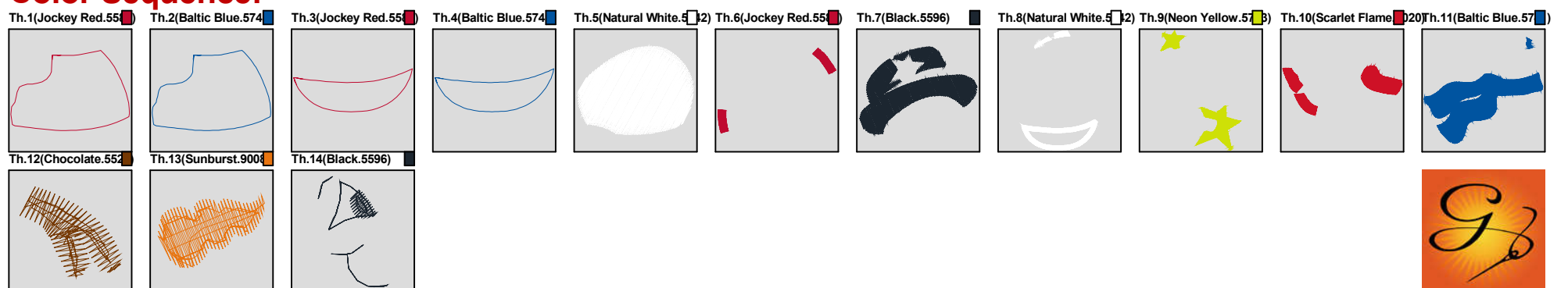
Design Note:

ZOOM 100%

No.	Thread	Length(m)
1.	Robison Anton Super Brite Poly.Jockey Red.5581	0.17
2.	Robison Anton Super Brite Poly.Baltic Blue.5741	0.17
3.	Robison Anton Super Brite Poly.Jockey Red.5581	0.13
4.	Robison Anton Super Brite Poly.Baltic Blue.5741	0.13
5.	Robison Anton Super Brite Poly.Natural White.5642	3.89
6.	Robison Anton Super Brite Poly.Jockey Red.5581	0.54
7.	Robison Anton Super Brite Poly.Black.5596	3.82
8.	Robison Anton Super Brite Poly.Natural White.5642	3.68
9.	Robison Anton Super Brite Poly.Neon Yellow.5713	3.07
10.	Robison Anton Super Brite Poly.Scarlet Flame.9020	3.07
11.	Robison Anton Super Brite Poly.Baltic Blue.5741	6.81
12.	Robison Anton Super Brite Poly.Chocolate.5527	0.27
13.	Robison Anton Super Brite Poly.Sunburst.9008	0.51
14.	Robison Anton Super Brite Poly.Black.5596	0.28



Color Sequence:



Design Name: atwjt12126	Customer Name:	Machine Set: Default
Size=68.6 mm x 99.4 mm (2.70 inch x 3.91 inch) Stitch No.=8549 ChangeColor No.=12 Trim No.=12		

Design Note:

ZOOM 100%


No.	Thread	Length(m)
1.	Robison Anton Super Brite Poly.Jockey Red.5581	0.19
2.	Robison Anton Super Brite Poly.Baltic Blue.5741	0.19
3.	Robison Anton Super Brite Poly.Natural White.5642	6.31
4.	Robison Anton Super Brite Poly.Black.5596	1.53
5.	Robison Anton Super Brite Poly.Sunburst.9008	0.46
6.	Robison Anton Super Brite Poly.China Blue.5823	1.24
7.	Robison Anton Super Brite Poly.Baltic Blue.5741	6.35
8.	Robison Anton Super Brite Poly.Natural White.5642	0.60
9.	Robison Anton Super Brite Poly.Chocolate.5527	1.06
10.	Robison Anton Super Brite Poly.Scarlet Flame.9020	0.95
11.	Robison Anton Super Brite Poly.Neon Yellow.5713	0.05
12.	Robison Anton Super Brite Poly.Wild Pink.5559	0.34
13.	Robison Anton Super Brite Poly.Black.5596	2.68



Color Sequence:


Th.1(Jockey Red.5581) Th.2(Baltic Blue.5741) Th.3(Natural White.5642) Th.4(Black.5596) Th.5(Sunburst.9008) Th.6(China Blue.5823) Th.7(Baltic Blue.5741) Th.8(Natural White.5642) Th.9(Chocolate.5527) Th.10(Scarlet Flame.9020) Th.11(Neon Yellow.5713)

Th.12(Wild Pink.5559) Th.13(Black.5596)



Design Name: atwjt12127	Customer Name:	Machine Set: Default	
Size=99.1 mm x 15.7 mm (3.90 inch x 0.62 inch) Stitch No.=6115 ChangeColor No.=1 Trim No.=6			

Design Note:

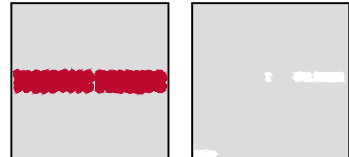
No.	Thread	Length(m)
1.	 Robison Anton Super Brite Poly.Jockey Red.5581	7.52
2.	Robison Anton Super Brite Poly.Natural White.5642	3.63

ZOOM 100%



Color Sequence:

Th.1(Jockey Red.5581) Th.2,3,4(Natural Whi 5642)

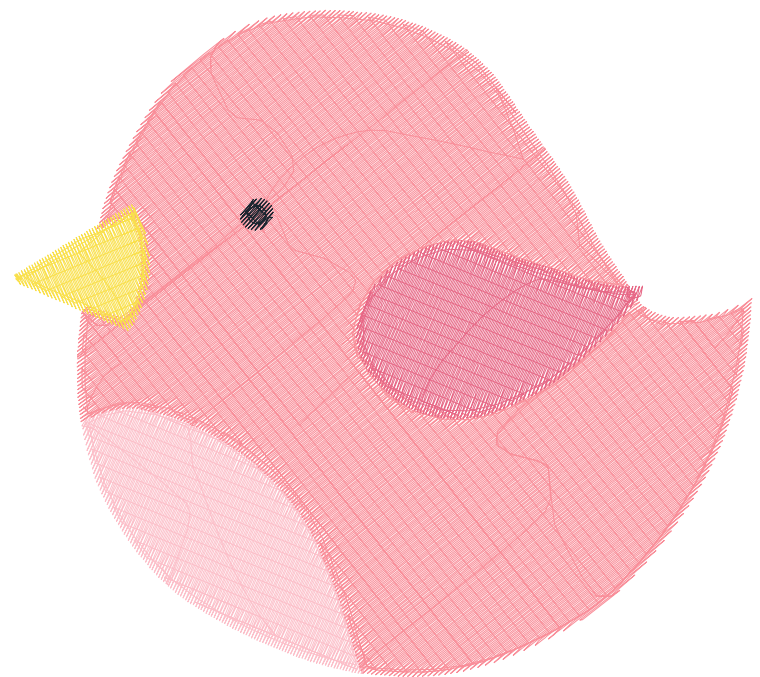


Design Name: atwjt12120	Customer Name:	Machine Set: Default	
Size=97.6 mm x 88.2 mm (3.84 inch x 3.47 inch) Stitch No.=13077 ChangeColor No.=4 Trim No.=1			

Design Note:

ZOOM 100%

No.	Thread	Length(m)
1.	 Robison Anton Super Brite Poly.Pink.5523	4.22
2.	 Robison Anton Super Brite Poly.Shrimp.5546	25.56
3.	 Robison Anton Super Brite Poly.Cabernet.5794	3.49
4.	 Robison Anton Super Brite Poly.Moonbeam.5860	1.01
5.	 Robison Anton Super Brite Poly.Black.5596	0.10



Color Sequence:

