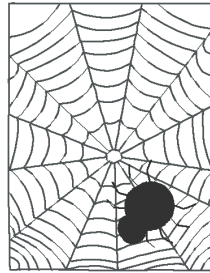


Redwork-Santas-and-Snowmen

\\psf\Home\Documents\1AAAA-NOT SEWN ...\atg11018.pes

7.56 cm x 9.79 cm
5534 stitches : 2 colors

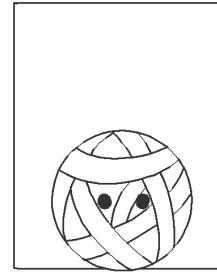
■ Pewter
■ Black



\\psf\Home\Documents\1AAAA-NOT SEWN ...\atg11019.pes

7.40 cm x 9.51 cm
1761 stitches : 1 colors

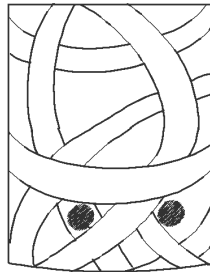
■ Black



\\psf\Home\Documents\1AAAA-NOT SEWN ...\atg11020.pes

7.41 cm x 9.58 cm
2543 stitches : 1 colors

■ Black



\\psf\Home\Documents\1AAAA-NOT SEWN ...\atg11021.pes

7.98 cm x 9.40 cm
3526 stitches : 3 colors

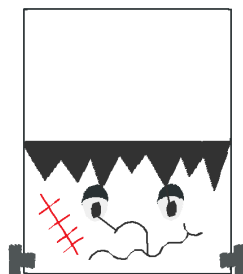
■ Tangerine
■ Cream Yellow
■ Black



\\psf\Home\Documents\1AAAA-NOT SEWN ...\atg11022.pes

8.45 cm x 9.51 cm
3327 stitches : 5 colors

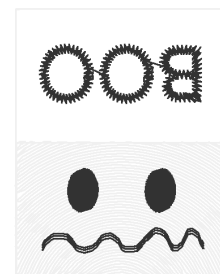
■ Dark Gray
■ White
■ Black
■ Pewter
■ Red



\\psf\Home\Documents\1AAAA-NOT SEWN ...\atg11023.pes

7.47 cm x 9.44 cm
3403 stitches : 2 colors

■ White
■ Black



\\psf\Home\Documents\1AAAA-NOT SEWN ...\atg11024.pes

7.44 cm x 9.44 cm

5503 stitches : 3 colors

- Red
- White
- Black



\\psf\Home\Documents\1AAAA-NOT SEWN ...\atg11025.pes

7.40 cm x 9.46 cm

2502 stitches : 2 colors

- Harvest Gold
- Magenta

