

**ATWLM2036.pes**

C:\Users\raind\OneDrive\Documents\1 Designs to Digitize\Cute Autumn...  
 3 (9/16)" x 3 (3/4)"  
 8978 stitches : 9 colors

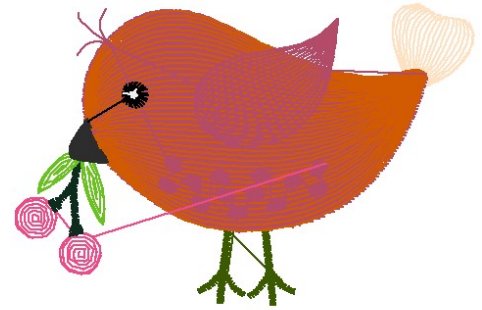
- Harvest Gold
- Amber Red
- Dark Gray
- Dark Olive
- Amber Red
- Reddish Brown
- Linen
- Black
- White



**ATWLM2037.pes**

C:\Users\raind\OneDrive\Documents\1 Designs to Digitize\Cute Autumn...  
 3 (3/4)" x 2 (7/16)"  
 8199 stitches : 11 colors

- Dark Olive
- Linen
- Amber Red
- Reddish Brown
- Amber Red
- Deep Rose
- Olive Green
- Lime Green
- Dark Gray
- Black
- White



**ATWLM2038.pes**

C:\Users\raind\OneDrive\Documents\1 Designs to Digitize\Cute Autumn...  
 3 (3/4)" x 3 (3/4)"  
 11260 stitches : 8 colors

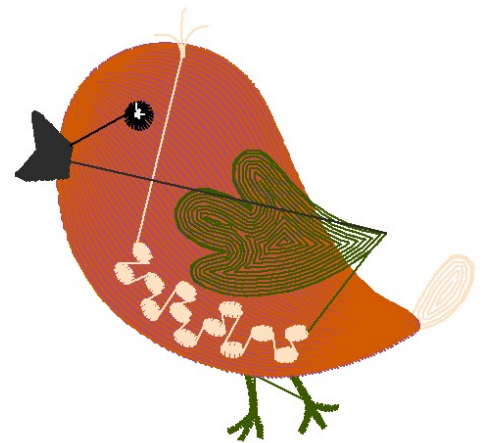
- Dark Gray
- Dark Olive
- Amber Red
- Reddish Brown
- Linen
- Black
- Yellow
- Dark Olive



**ATWLM2039.pes**

C:\Users\raind\OneDrive\Documents\1 Designs to Digitize\Cute Autumn...  
 3 (5/8)" x 3 (7/16)"  
 10092 stitches : 9 colors

- Dark Olive
- Linen
- Amber Red
- Reddish Brown
- Linen
- Dark Olive
- Dark Gray
- Black
- White



**ATWLM2040.pes**

C:\Users\raind\OneDrive\Documents\1 Designs to Digitize\Cute Autumn...  
 3 (3/8)" x 3 (5/8)"  
 9709 stitches : 8 colors

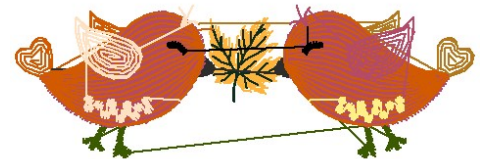
- Dark Gray
- Dark Olive
- Amber Red
- Reddish Brown
- Amber Red
- Black
- White
- Linen



**ATWLM2041.pes**

C:\Users\raind\OneDrive\Documents\1 Designs to Digitize\Cute Autumn...  
 3 (3/4)" x 1 (3/16)"  
 5792 stitches : 14 colors

- Orange
- Olive Green
- Reddish Brown
- Dark Gray
- Dark Olive
- Amber Red
- Reddish Brown
- Linen
- Light Brown
- Amber Red
- Reddish Brown
- Cream Yellow
- Amber Red
- Black



**ATWLM2042.pes**

C:\Users\raind\OneDrive\Documents\1 Designs to Digitize\Cute Autum...  
3 (3/4)" x 3 "  
9050 stitches : 8 colors

- Linen
- Dark Olive
- Amber Red
- Reddish Brown
- Linen
- Dark Gray
- Black
- White

