

Native Butterflies

Author Name: Florence
Design File: atwflc0247.gen

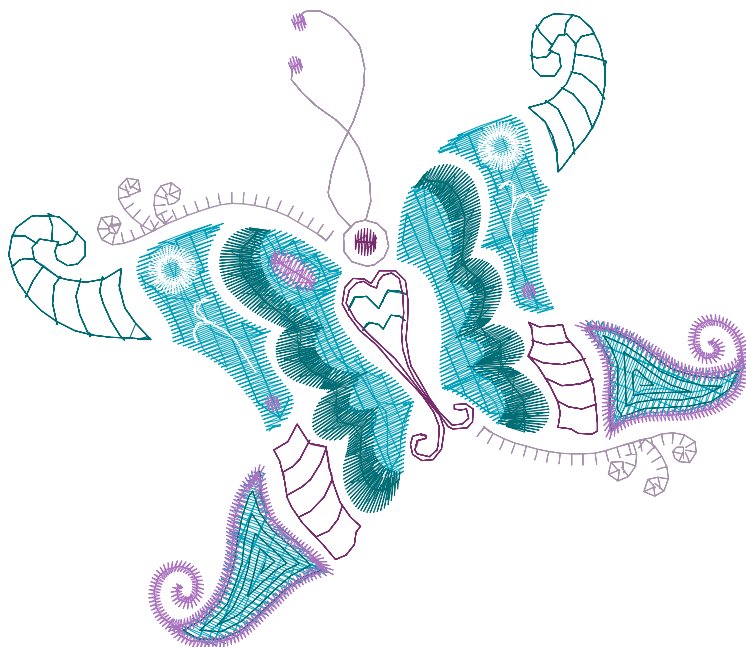
Print At: 2016-4- 7

Design Name: atwflc0247	Customer Name:	Machine Set: Default	
Size=98.00 mm x 84.50 mm	Stitch No.=7520	ChangeColor No.=5	Trim No.=27

Design Note:

No.	Thread	Length(m)
1.	 Robison Anton Super Brite Poly.Sterling.5706	0.90
2.	 Robison Anton Super Brite Poly.Blue Fringe.9054	5.57
3.	 Robison Anton Super Brite Poly.Mallard Blue.5821	4.42
4.	 Robison Anton Super Brite Poly.Cindy Purple.9088	1.69
5.	 Robison Anton Super Brite Poly.Aubergine.9046	1.22
6.	 Robison Anton Super Brite Poly.Natural White.5642	0.52

ZOOM 100%



Color Sequence:



Native Butterflies

Author Name: Florence

Print At: 2016-4- 7

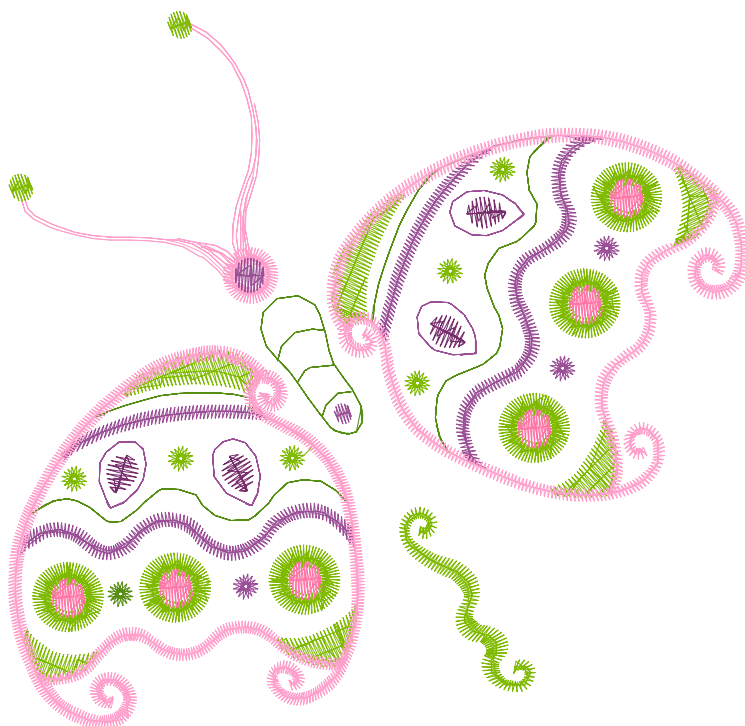
Design File: atwflc0248.gen

Design Name: atwflc0248	Customer Name:	Machine Set: Default	
Size=98.00 mm x 94.80 mm	Stitch No.=7768	ChangeColor No.=7	Trim No.=43

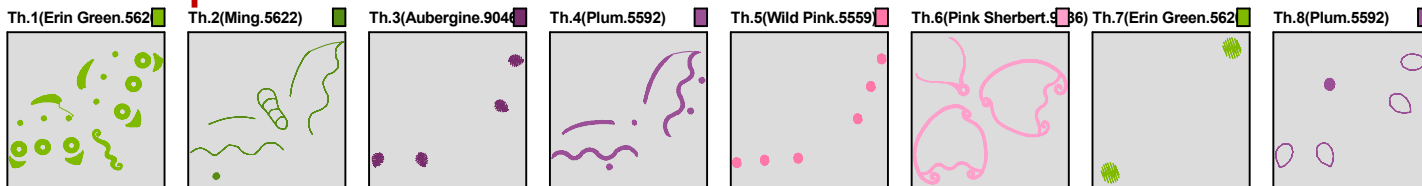
Design Note:

No.	Thread	Length(m)
1.	Robison Anton Super Brite Poly.Erin Green.5620	4.96
2.	Robison Anton Super Brite Poly.Ming.5622	1.09
3.	Robison Anton Super Brite Poly.Aubergine.9046	0.32
4.	Robison Anton Super Brite Poly.Plum.5592	1.95
5.	Robison Anton Super Brite Poly.Wild Pink.5559	0.71
6.	Robison Anton Super Brite Poly.Pink Sherbert.9036	5.43
7.	Robison Anton Super Brite Poly.Erin Green.5620	0.12
8.	Robison Anton Super Brite Poly.Plum.5592	0.50

ZOOM 100%



Color Sequence:



Native Butterflies

Author Name: Florence

Print At: 2016-4- 7

Design File: atwflc0249.gen

Design Name: atwflc0249	Customer Name:	Machine Set: Default	
Size=97.60 mm x 85.40 mm	Stitch No.=6341	ChangeColor No.=7	Trim No.=24

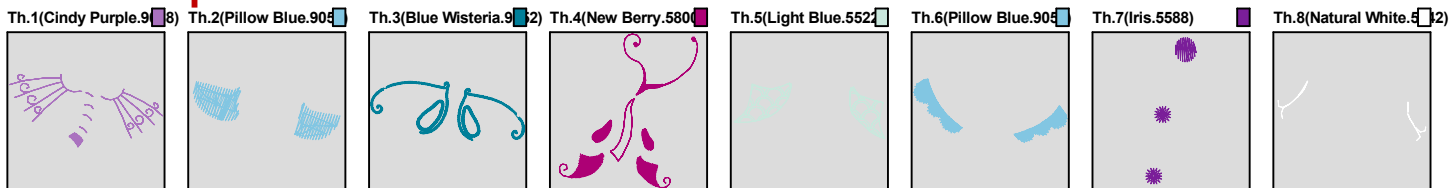
Design Note:

No.	Thread	Length(m)
1.	 Robison Anton Super Brite Poly.Cindy Purple.9088	1.54
2.	 Robison Anton Super Brite Poly.Pillow Blue.9059	0.47
3.	 Robison Anton Super Brite Poly.Blue Wisteria.9052	2.89
4.	 Robison Anton Super Brite Poly.New Berry.5800	2.92
5.	 Robison Anton Super Brite Poly.Light Blue.5522	0.69
6.	 Robison Anton Super Brite Poly.Pillow Blue.9059	2.89
7.	 Robison Anton Super Brite Poly.Iris.5588	0.21
8.	Robison Anton Super Brite Poly.Natural White.5642	0.07

ZOOM 100%



Color Sequence:

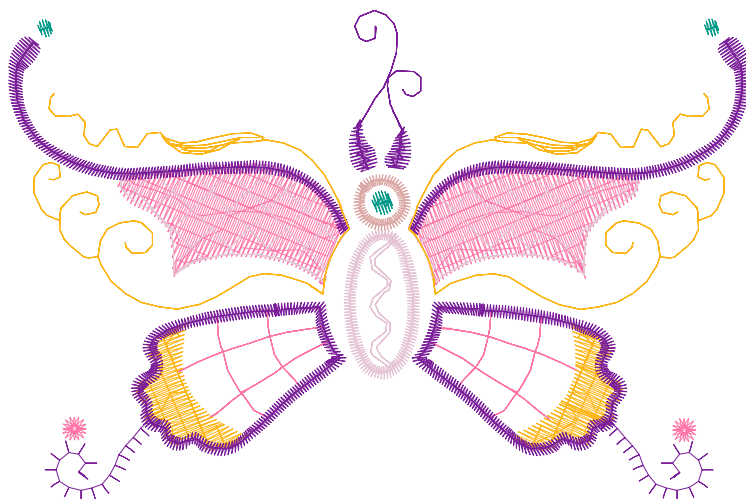


Design Name: atwflc0250	Customer Name:	Machine Set: Default	
Size=98.00 mm x 64.90 mm	Stitch No.=5983	ChangeColor No.=6	Trim No.=19

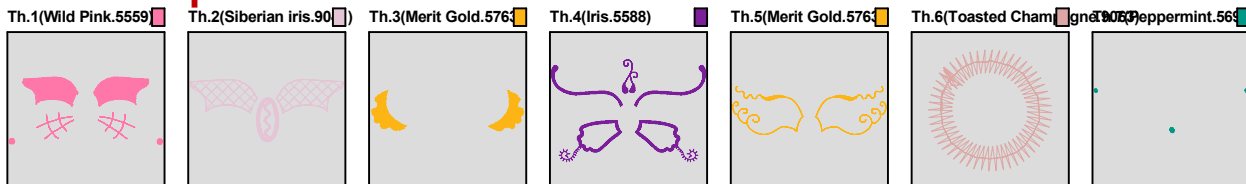
Design Note:

No.	Thread	Length(m)
1.	 Robison Anton Super Brite Poly.Wild Pink.5559	3.29
2.	 Robison Anton Super Brite Poly.Siberian iris.9041	1.60
3.	 Robison Anton Super Brite Poly.Merit Gold.5763	1.10
4.	 Robison Anton Super Brite Poly.Iris.5588	3.65
5.	 Robison Anton Super Brite Poly.Merit Gold.5763	1.62
6.	 Robison Anton Super Brite Poly.Toasted Champagne.9063	0.20
7.	 Robison Anton Super Brite Poly.Peppermint.5690	0.09

ZOOM 100%



Color Sequence:



Native Butterflies

Author Name: Florence
Design File: atwflc0251.gen

Print At: 2016-4- 7

Design Name: atwflc0251	Customer Name:	Machine Set: Default	
Size=95.00 mm x 97.70 mm	Stitch No.=6706	ChangeColor No.=6	Trim No.=18

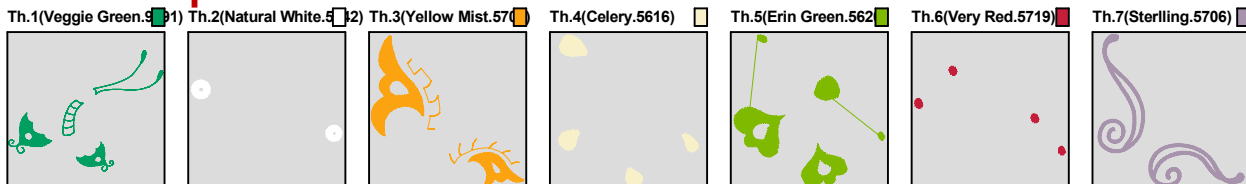
Design Note:

No.	Thread	Length(m)
1.	 Robison Anton Super Brite Poly.Veggie Green.9091	2.86
2.	Robison Anton Super Brite Poly.Natural White.5642	0.39
3.	 Robison Anton Super Brite Poly.Yellow Mist.5709	3.36
4.	 Robison Anton Super Brite Poly.Celery.5616	0.93
5.	 Robison Anton Super Brite Poly.Erin Green.5620	2.29
6.	 Robison Anton Super Brite Poly.Very Red.5719	0.15
7.	 Robison Anton Super Brite Poly.Sterling.5706	3.60

ZOOM 100%



Color Sequence:



Native Butterflies

Author Name: Florence
Design File: atwflc0252.gen

Print At: 2016-4- 7

Design Name: atwflc0252	Customer Name:	Machine Set: Default	
Size=81.00 mm x 97.60 mm	Stitch No.=5174	ChangeColor No.=4	Trim No.=26

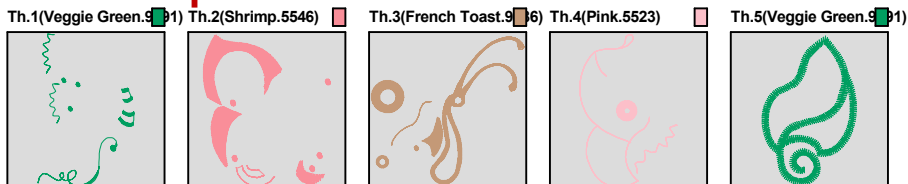
Design Note:

No.	Thread	Length(m)
1.	 Robison Anton Super Brite Poly.Veggie Green.9091	0.85
2.	 Robison Anton Super Brite Poly.Shrimp.5546	2.59
3.	 Robison Anton Super Brite Poly.French Toast.9086	4.01
4.	 Robison Anton Super Brite Poly.Pink.5523	1.30
5.	 Robison Anton Super Brite Poly.Veggie Green.9091	1.42

ZOOM 100%



Color Sequence:

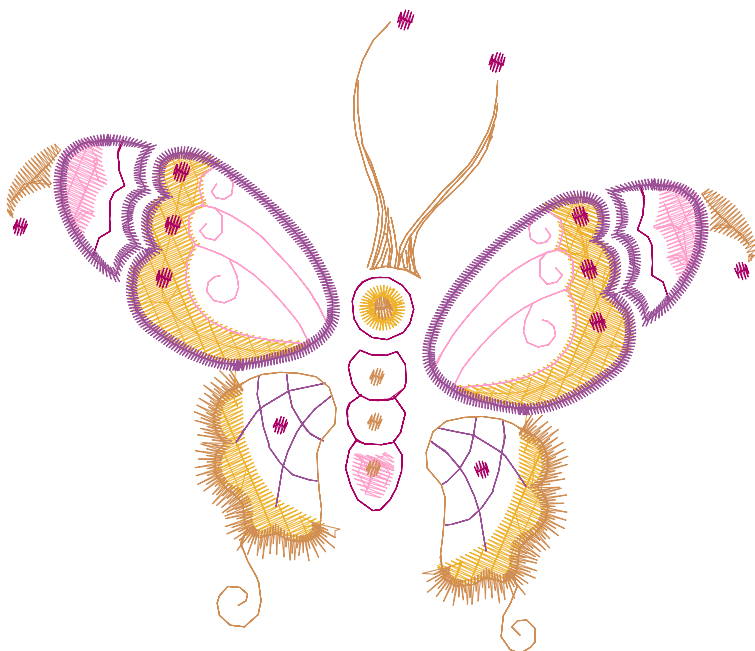


Design Name: atwflc0253	Customer Name:	Machine Set: Default	
Size=99.00 mm x 85.00 mm	Stitch No.=6558	ChangeColor No.=4	Trim No.=40

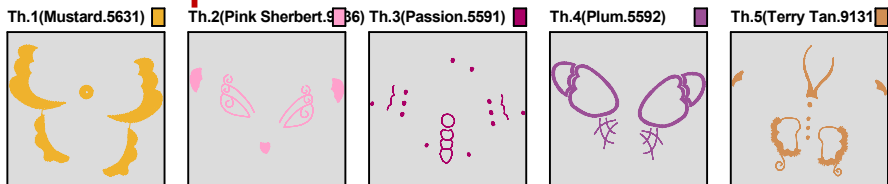
Design Note:

No.	Thread	Length(m)
1.	 Robison Anton Super Brite Poly.Mustard.5631	3.82
2.	 Robison Anton Super Brite Poly.Pink Sherbert.9036	1.76
3.	 Robison Anton Super Brite Poly.Passion.5591	0.89
4.	 Robison Anton Super Brite Poly.Plum.5592	3.56
5.	 Robison Anton Super Brite Poly.Terry Tan.9131	2.96

ZOOM 100%










Color Sequence:



Design Name: atwflc0254	Customer Name:	Machine Set: Default	
Size=97.80 mm x 97.20 mm	Stitch No.=6799	ChangeColor No.=7	Trim No.=39

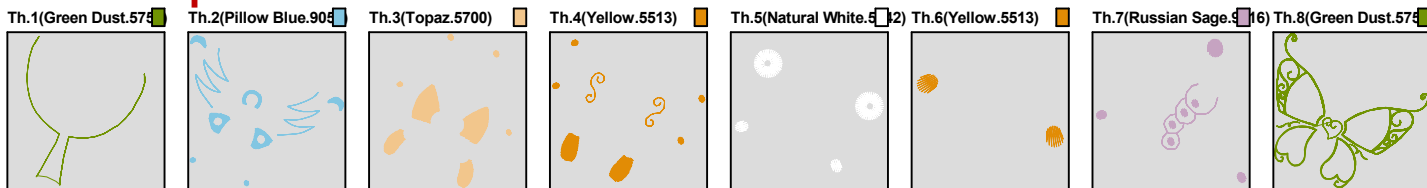
Design Note:

No.	Thread	Length(m)
1.	 Robison Anton Super Brite Poly.Green Dust.5757	0.32
2.	 Robison Anton Super Brite Poly.Pillow Blue.9059	2.06
3.	 Robison Anton Super Brite Poly.Topaz.5700	2.97
4.	 Robison Anton Super Brite Poly.Yellow.5513	0.99
5.	 Robison Anton Super Brite Poly.Natural White.5642	0.53
6.	 Robison Anton Super Brite Poly.Yellow.5513	0.12
7.	 Robison Anton Super Brite Poly.Russian Sage.9016	0.54
8.	 Robison Anton Super Brite Poly.Green Dust.5757	5.75

ZOOM 100%



Color Sequence:



Design Name: atwflc0255	Customer Name:	Machine Set: Default	
Size=84.10 mm x 98.00 mm	Stitch No.=8591	ChangeColor No.=7	Trim No.=63

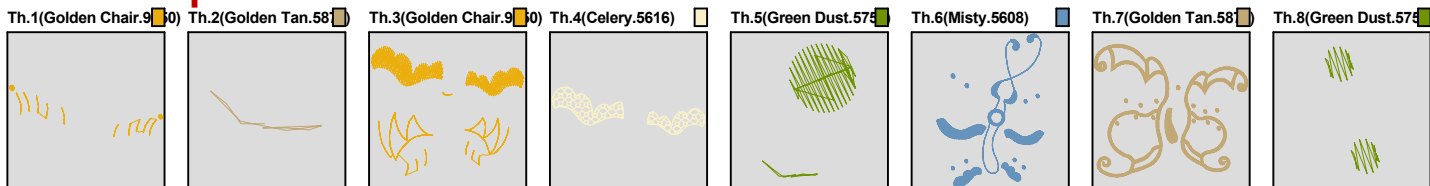
Design Note:

No.	Thread	Length(m)
1.	 Robison Anton Super Brite Poly.Golden Chair.9050	0.40
2.	 Robison Anton Super Brite Poly.Golden Tan.5870	0.01
3.	 Robison Anton Super Brite Poly.Golden Chair.9050	2.66
4.	 Robison Anton Super Brite Poly.Celery.5616	1.15
5.	 Robison Anton Super Brite Poly.Green Dust.5757	0.18
6.	 Robison Anton Super Brite Poly.Misty.5608	4.64
7.	 Robison Anton Super Brite Poly.Golden Tan.5870	6.61
8.	 Robison Anton Super Brite Poly.Green Dust.5757	0.04

ZOOM 100%



Color Sequence:



Native Butterflies

Author Name: Florence

Print At: 2016-4- 7

Design File: atwflc0246.gen

Design Name: atwflc0246	Customer Name:	Machine Set: Default	
Size=96.80 mm x 97.80 mm	Stitch No.=7305	ChangeColor No.=7	Trim No.=27

Design Note:

No.	Thread	Length(m)
1.	Robison Anton Super Brite Poly.Plum.5592	1.23
2.	Robison Anton Super Brite Poly.Miami Artillery.9170	0.58
3.	Robison Anton Super Brite Poly.Popular Purple.9019	1.04
4.	Robison Anton Super Brite Poly.Dolphin Blue.5829	0.54
5.	Robison Anton Super Brite Poly.Miami Artillery.9170	4.98
6.	Robison Anton Super Brite Poly.Natural White.5642	2.28
7.	Robison Anton Super Brite Poly.Shrimp.5546	4.70
8.	Robison Anton Super Brite Poly.Plum.5592	0.05

ZOOM 100%



Color Sequence:

