

Design Name: atwmc0087	Customer Name:	Machine Set: Default	
Size=77.6 mm x 97.4 mm (3.06 inch x 3.83 inch) Stitch No.=8912 ChangeColor No.=8 Trim No.=17			

Design Note:

No.	Thread	Length(m)
1.	Robison Anton Super Brite Poly.Storm Gail.9090	1.08
2.	Robison Anton Super Brite Poly.Metal.5707	0.46
3.	Robison Anton Super Brite Poly.Black.5596	0.54
4.	Robison Anton Super Brite Poly.Golden Tan.5870	2.24
5.	Robison Anton Super Brite Poly.Storm Gail.9090	0.37
6.	Robison Anton Super Brite Poly.Golden Chair.9050	11.20
7.	Robison Anton Super Brite Poly.Green Dust.5757	2.67
8.	Robison Anton Super Brite Poly.Jockey Red.5581	0.26
9.	Robison Anton Super Brite Poly.Black.5596	0.30

ZOOM 100%



Color Sequence:

Th.1(Storm Gail.9090)	Th.2(Metal.5707)	Th.3(Black.5596)	Th.4(Golden Tan.5870)	Th.5(Storm Gail.9090)	Th.6(Golden Chair.9050)	Th.7(Green Dust.5757)	Th.8(Jockey Red.5581)
Th.9(Black.5596)							

Design Name: atwmcm0088	Customer Name:	Machine Set: Default	
Size=87.0 mm x 98.2 mm (3.43 inch x 3.87 inch) Stitch No.=8903 ChangeColor No.=6 Trim No.=26			

Design Note:

No.	Thread	Length(m)
1.	Robison Anton Super Brite Poly.Black.5596	0.69
2.	Robison Anton Super Brite Poly.Melville.9113	1.12
3.	Robison Anton Super Brite Poly.Cloud.5783	0.52
4.	Robison Anton Super Brite Poly.Golden Tan.5870	2.12
5.	Robison Anton Super Brite Poly.Terry Tan.9131	1.48
6.	Robison Anton Super Brite Poly.Pistachio.5550	11.43
7.	Robison Anton Super Brite Poly.Black.5596	0.45

ZOOM 100%



Color Sequence:



Design Name: atwmcm0089	Customer Name:	Machine Set: Default	
Size=80.0 mm x 97.4 mm (3.15 inch x 3.83 inch) Stitch No.=9010 ChangeColor No.=5 Trim No.=21			

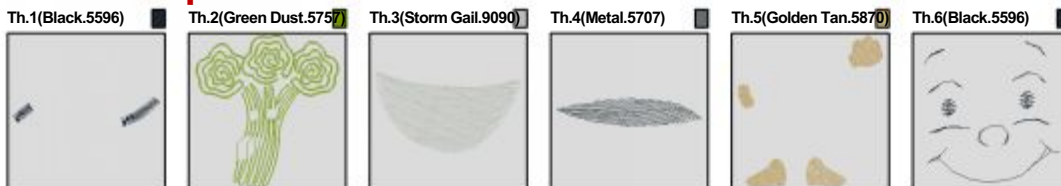
Design Note:

No.	Thread	Length(m)
1.	 Robison Anton Super Brite Poly.Black.5596	0.16
2.	 Robison Anton Super Brite Poly.Green Dust.5757	13.53
3.	 Robison Anton Super Brite Poly.Storm Gail.9090	1.20
4.	 Robison Anton Super Brite Poly.Metal.5707	0.54
5.	 Robison Anton Super Brite Poly.Golden Tan.5870	1.76
6.	 Robison Anton Super Brite Poly.Black.5596	0.35

ZOOM 100%



Color Sequence:



Design Name: atwmcm0090	Customer Name:	Machine Set: Default	
Size=51.0 mm x 98.0 mm (2.01 inch x 3.86 inch) Stitch No.=5762 ChangeColor No.=9 Trim No.=20			

Design Note:

No.	Thread	Length(m)
1.	Robison Anton Super Brite Poly.Black.5596	0.32
2.	Robison Anton Super Brite Poly.Light Cocoa.5778	0.30
3.	Robison Anton Super Brite Poly.Melville.9113	0.71
4.	Robison Anton Super Brite Poly.Delano Gray.9112	0.07
5.	Robison Anton Super Brite Poly.Golden Tan.5870	0.58
6.	Robison Anton Super Brite Poly.Spruce.5579	4.69
7.	Robison Anton Super Brite Poly.Coronation Gold.9014	3.27
8.	Robison Anton Super Brite Poly.Sonesta Brown.9156	1.14
9.	Robison Anton Super Brite Poly.Scarlet Flame.9020	0.12
10.	Robison Anton Super Brite Poly.Black.5596	0.33

ZOOM 100%



Color Sequence:



Design Name: atwmcm0091	Customer Name:	Machine Set: Default	
Size=52.7 mm x 97.0 mm (2.07 inch x 3.82 inch) Stitch No.=7309 ChangeColor No.=8 Trim No.=24			

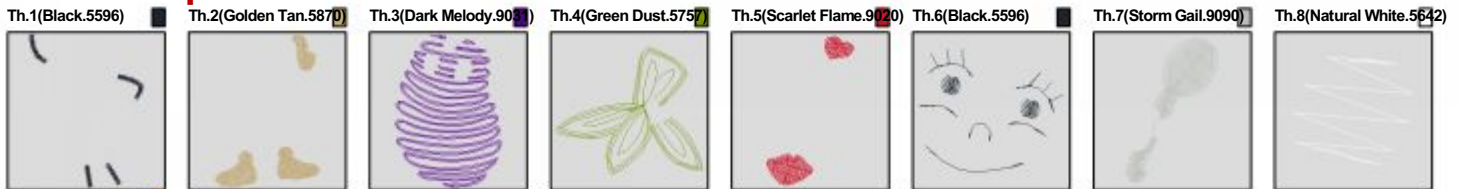
Design Note:

No.	Thread	Length(m)
1.	Robison Anton Super Brite Poly.Black.5596	0.60
2.	Robison Anton Super Brite Poly.Golden Tan.5870	1.21
3.	Robison Anton Super Brite Poly.Dark Melody.9031	8.98
4.	Robison Anton Super Brite Poly.Green Dust.5757	1.78
5.	Robison Anton Super Brite Poly.Scarlet Flame.9020	0.43
6.	Robison Anton Super Brite Poly.Black.5596	0.36
7.	Robison Anton Super Brite Poly.Storm Gail.9090	0.71
8.	Robison Anton Super Brite Poly.Natural White.5642	0.05
9.	Robison Anton Super Brite Poly.Golden Tan.5870	0.46

ZOOM 100%



Color Sequence:



Design Name: atwmcm0092	Customer Name:	Machine Set: Default	
Size=58.6 mm x 98.0 mm (2.31 inch x 3.86 inch) Stitch No.=5370 ChangeColor No.=7 Trim No.=22			

Design Note:

No.	Thread	Length(m)
1.	Robison Anton Super Brite Poly.Black.5596	0.58
2.	Robison Anton Super Brite Poly.Golden Tan.5870	1.29
3.	Robison Anton Super Brite Poly.Ming.5622	2.16
4.	Robison Anton Super Brite Poly.Oriental Poppies.9058	4.84
5.	Robison Anton Super Brite Poly.Melville.9113	0.37
6.	Robison Anton Super Brite Poly.Sonesta Brown.9156	0.20
7.	Robison Anton Super Brite Poly.Golden Tan.5870	0.33
8.	Robison Anton Super Brite Poly.Black.5596	0.37

ZOOM 100%



Color Sequence:



Design Name: atwmcm0093	Customer Name:	Machine Set: Default	
Size=87.2 mm x 97.6 mm (3.43 inch x 3.84 inch) Stitch No.=9952 ChangeColor No.=7 Trim No.=20			

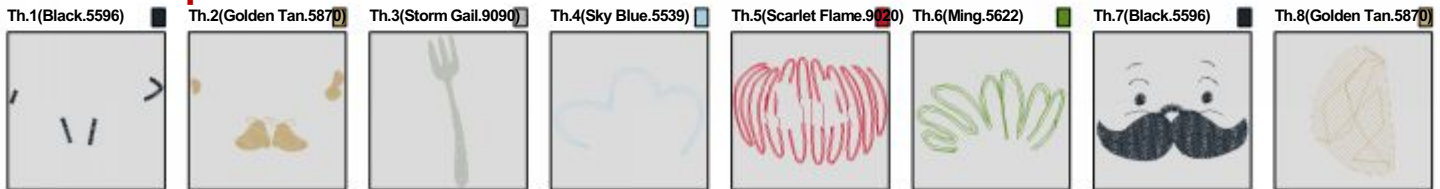
Design Note:

No.	Thread	Length(m)
1.	Robison Anton Super Brite Poly.Black.5596	0.60
2.	Robison Anton Super Brite Poly.Golden Tan.5870	1.83
3.	Robison Anton Super Brite Poly.Storm Gail.9090	2.68
4.	Robison Anton Super Brite Poly.Sky Blue.5539	0.84
5.	Robison Anton Super Brite Poly.Scarlet Flame.9020	8.99
6.	Robison Anton Super Brite Poly.Ming.5622	1.93
7.	Robison Anton Super Brite Poly.Black.5596	2.93
8.	Robison Anton Super Brite Poly.Golden Tan.5870	0.20

ZOOM 100%



Color Sequence:



Design Name: atwmcm0094	Customer Name:	Machine Set: Default	
Size=68.8 mm x 99.8 mm (2.71 inch x 3.93 inch) Stitch No.=7432 ChangeColor No.=8 Trim No.=21			

Design Note:

No.	Thread	Length(m)
1.	Robison Anton Super Brite Poly.Black.5596	0.55
2.	Robison Anton Super Brite Poly.Golden Tan.5870	1.20
3.	Robison Anton Super Brite Poly.Metal.5707	1.08
4.	Robison Anton Super Brite Poly.Storm Gail.9090	1.92
5.	Robison Anton Super Brite Poly.Golden Tan.5870	0.12
6.	Robison Anton Super Brite Poly.Light Cocoa.5778	8.67
7.	Robison Anton Super Brite Poly.Cameron Blue.9089	0.94
8.	Robison Anton Super Brite Poly.Scarlet Flame.9020	0.60
9.	Robison Anton Super Brite Poly.Black.5596	0.39

ZOOM 100%



Color Sequence:

