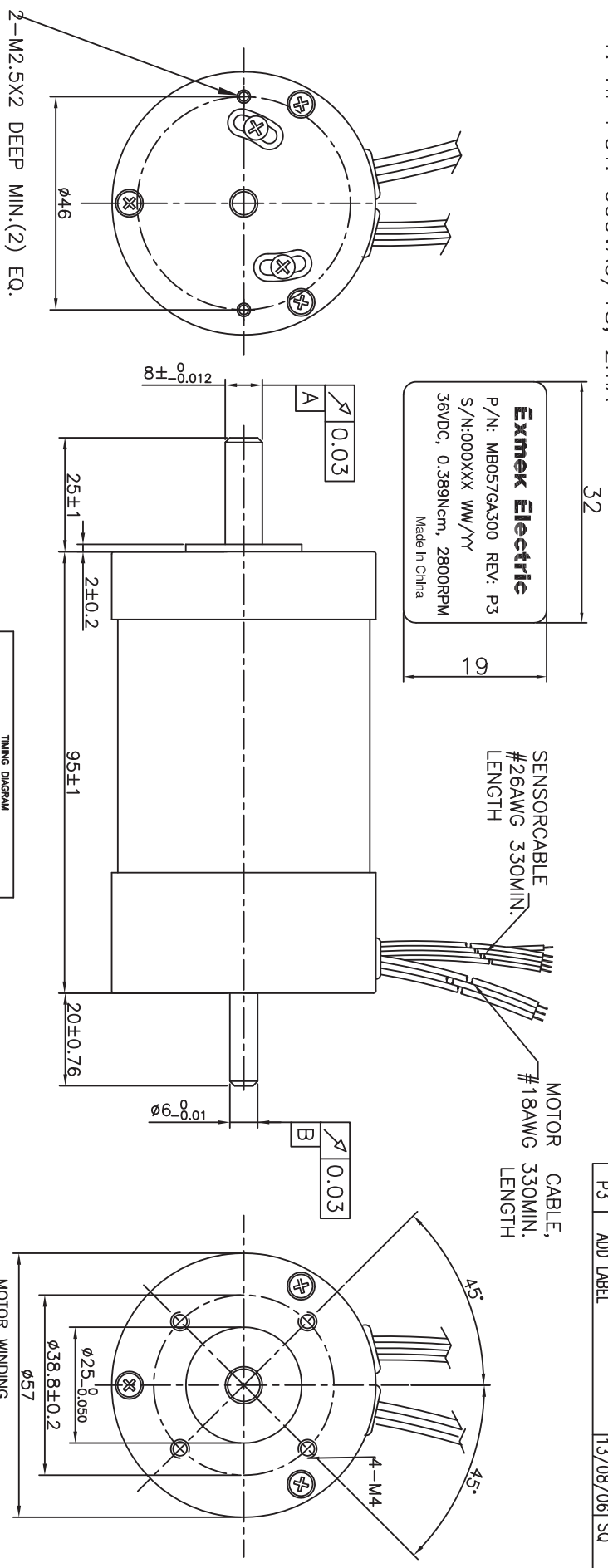


NOTES:
1. HI-POT: 600VAC/1S, 2mA

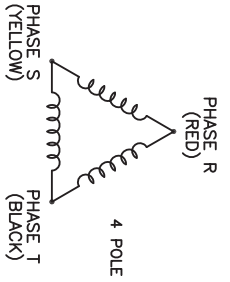
REV	DESCRIPTION	DATE	APPROVE
P1	PRELIMINARY	13/06/21	SQ
P2	PRELIMINARY	13/06/27	SQ
P3	ADD LABEL	13/08/06	SQ



MOTOR PARAMETERS @25°C		
	TOL.	UNITS
RATED VOLTAGE	NOM.	VDC
RATED SPEED	±10%	R.P.M.
RATED TORQUE	NOM.	Nm
PEAK TORQUE (Tp)	MAX.	Nm
TORQUE SENSITIVITY (Kt)	±10%	Nm/AMPS
BACK EMF CONSTANT (Ke) (L-L, D.C.)	±10%	V/K R.P.M.
D.C. RESISTANCE (Rt) (L-L)	±10%	OHMS
INDUCTANCE (L) (L-L)	±15%	mH
ROTOR INERTIA (Jd)	NOM.	Kg-cm ²
FRICION TORQUE	NOM.	Nm
DAMPING TORQUE	NOM.	Nm/KRPM
WINDING TEMPERATURE	MAX	DEG C
WEIGHT	NOM.	LBS

TIMING DIAGRAM	
ELECTRICAL DEGREES	ROTATION: COUNTERCLOCKWISE AS VIEWED FROM SHAFT END.
0°	
60°	
120°	
180°	
240°	
300°	
360°	

COLOR CODE	
RED	FUNCTION PHASE R
YELLOW	PHASE S
BLACK	PHASE T
BLUE	HALL A
GREEN	HALL B
WHITE	HALL C
RED	+5-24 VDC
BLACK	GROUND



NOTE: THIS DRAWING HAS BEEN CREATED BY AUTOCAD. MANUAL REVISIONS ARE NOT ALLOWED.

MATERIAL		TOLERANCE UNLESS OTHERWISE SPECIFIED	
		ISO 2768-1 MEDIUM	

DRAWN	CHECKED	APPROVED	DATE	FILENAME	DATE	SCALE
XXD	ZHB		04/02/29	MB057GA300	04/02/29	N/A

Exmex
D.C. BRUSHLESS MOTOR
MB057GA300
SHEET 1/1

THIS DRAWING AND THE INFORMATION DISCLOSED HEREIN ARE PROPRIETARY DATA OF EXMEX ELECTRIC CO. LTD. AND IS TO BE IMMEDIATELY RETURNED UPON REQUEST. REPRODUCTION OF THIS DRAWING OR THE INFORMATION CONTAINED HEREIN IS PROHIBITED WITHOUT THE EXPRESS WRITTEN APPROVAL OF EXMEX.