

Pimoroni Yukon

- 6x Slots for High Power Modules
- E-Fuse with Switchable Output
- XT30 Connector (Power In)
- USB-C (Data & Programming)
- RP2040 with 16MB Flash
- 1x On-Off & 3x User Buttons (1 is Boot)
- 2x Power & 2x User LEDs
- 2x QW/ST Connectors

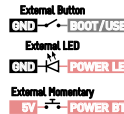
XT30 Input: 5-17V (15A Continuous)
 E-Fuse Protections: 40A Overcurrent, 18V Overvoltage
 Sensors: Voltage In & Out, Current, Temperature

Pins and Dims

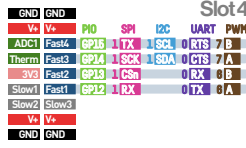
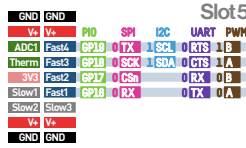
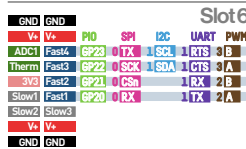
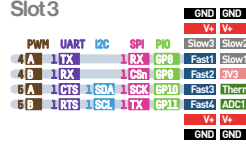
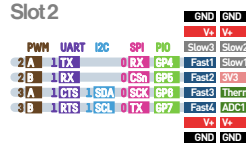
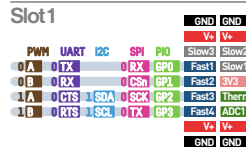
Slot Pitch: 2mm
 Module Width: 20mm
 Board Length: 84mm

Board Width: 67mm
 Hole Spacing: 61mm
 Support Spacing: 43mm

Control

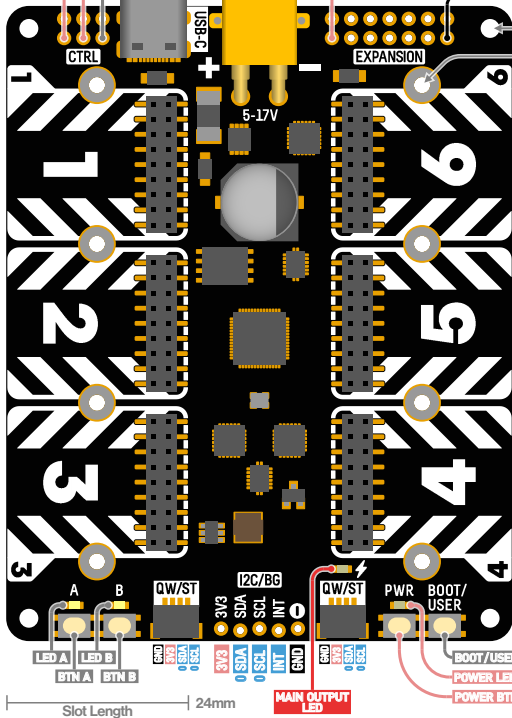


Expansion



Pin Types

- High Power
- Low Power
- Debugging
- Ground
- RP2040 GPIO (Fast)
- RP2040 I2C
- Mux ADC
- Expander IO (Slow)



KEY: 0 SDA Function Name Peripheral (I2C etc.)