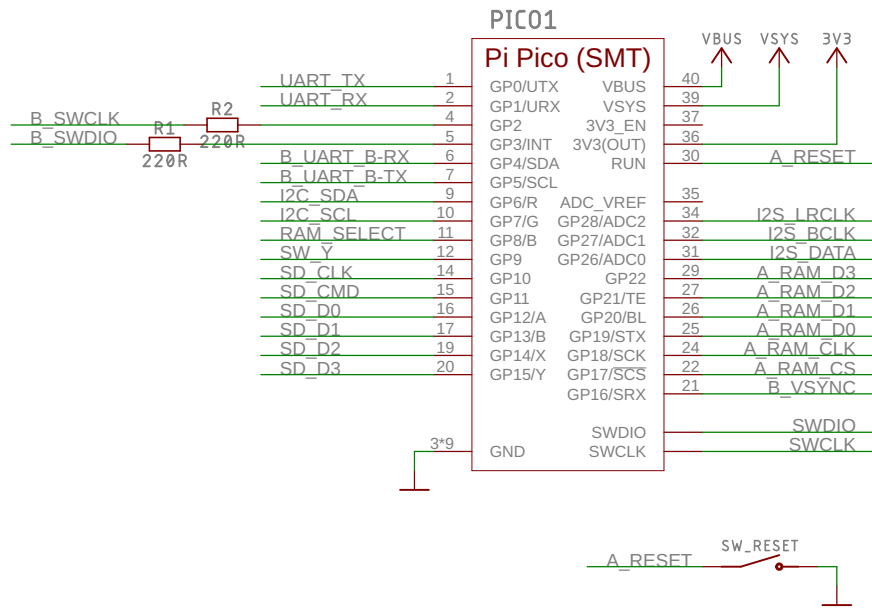
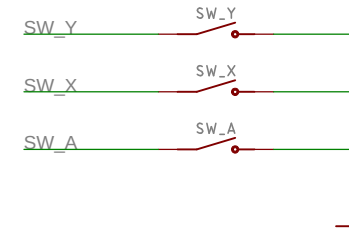


PicoVision (Pico W Aboard) (PIM674)

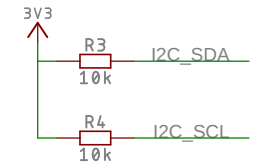
Pico W (CPU)



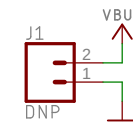
User switches



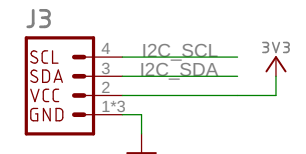
Pullups



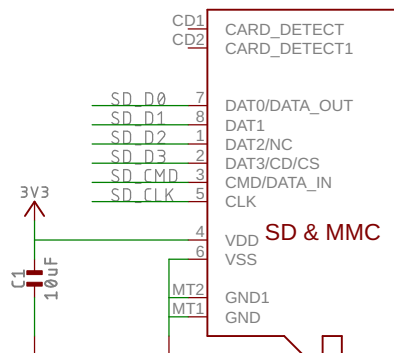
Power header



Qwiic / Stemma QT connector

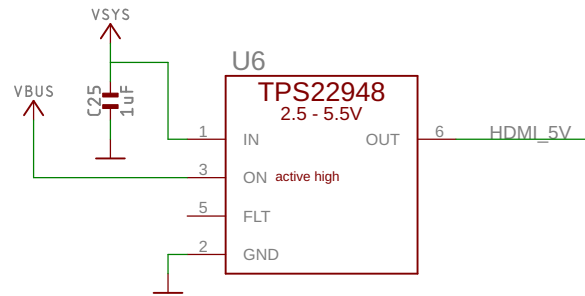


SD Card Socket

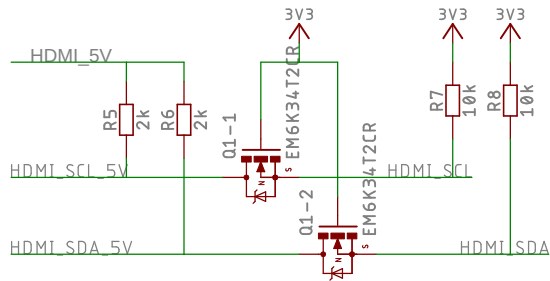


PicoVision (Pico W Aboard) (PIM674)

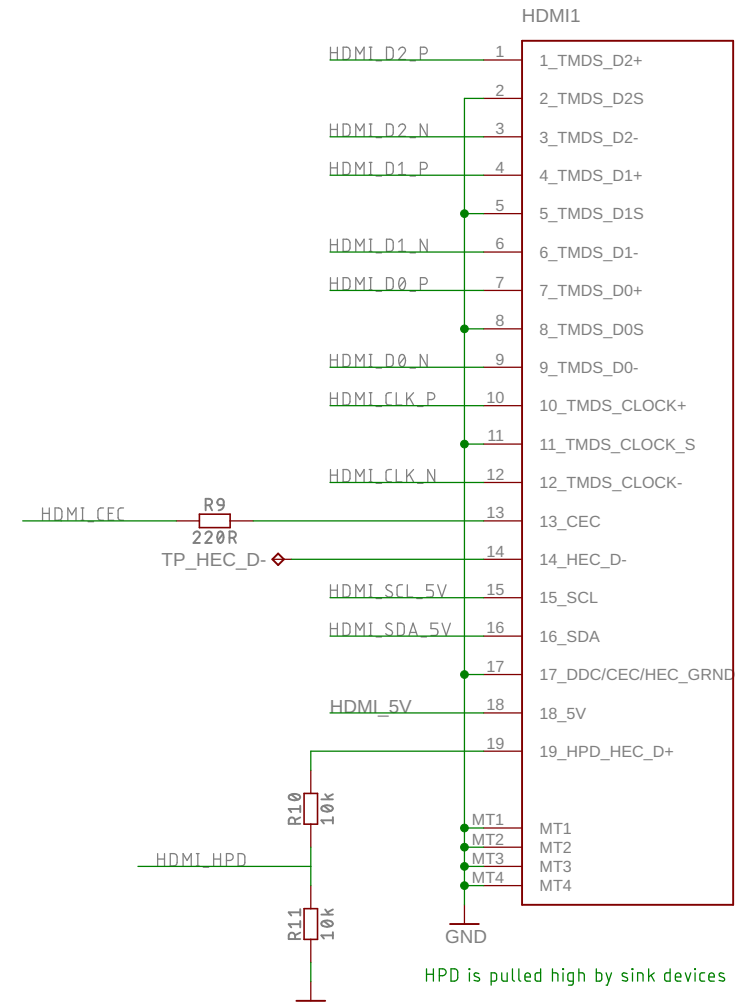
HDMI 5V load switch, turns off power connection when USB is unplugged.



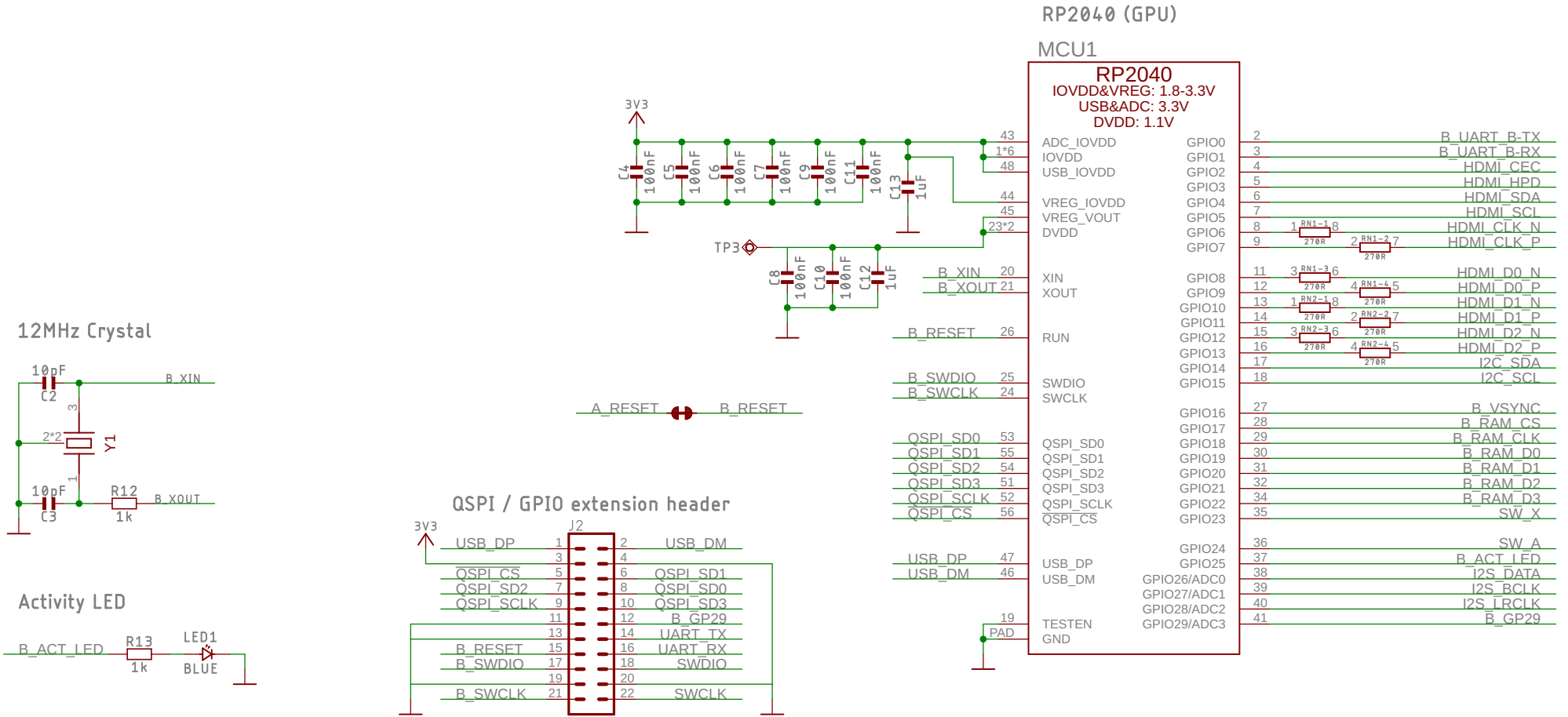
I2C level shifting for HDMI Comms



HDMI Connector

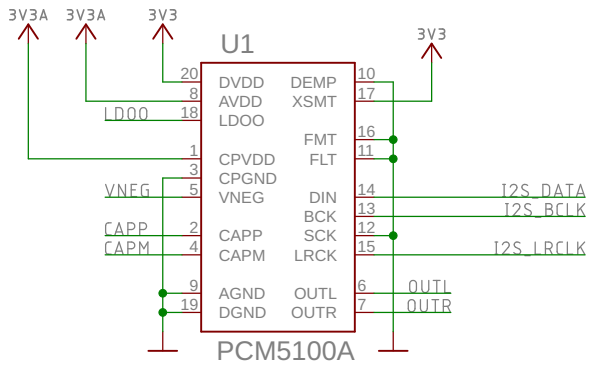


PicoVision (Pico W Aboard) (PIM674)

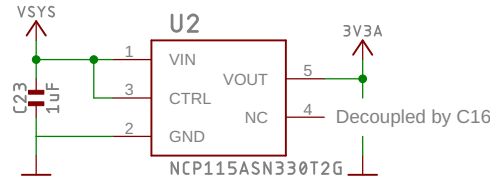


PicoVision (Pico W Aboard) (PIM674)

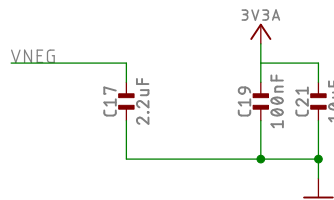
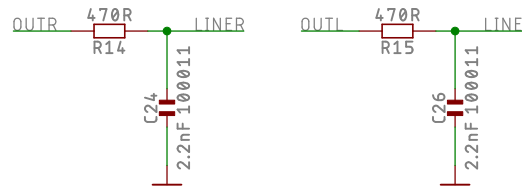
DAC w/ Supporting passives



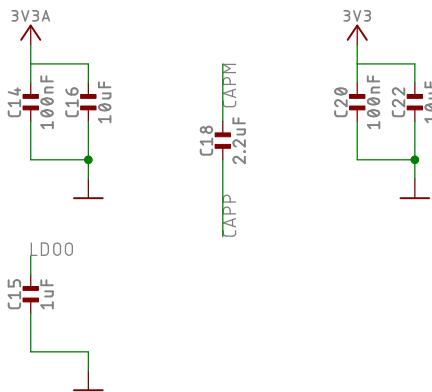
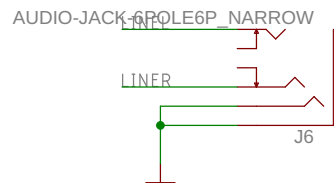
Audio Power



Audio Output Filters

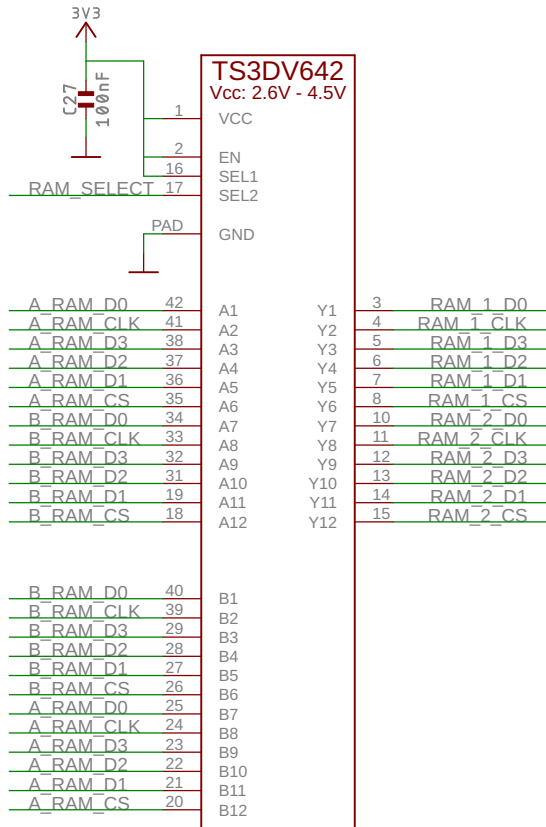


Lineout Jack



PicoVision (Pico W Aboard) (PIM674)

Multiplexer for swapping the PSRAMs



Two PSRAMs which can be swapped between the CPU and the GPU

