



We Manufacture  
You Score

Scan for video assembly Instructions



### ▲! WARNING

1. This goal is intended to be used outdoors only.
2. The goal is not to be stored or used on a sloped or hill area.
3. The goal shall be secured against tilting or overturning at all times.
4. Check to ensure that all fasteners are fully tightened before using this product; Check fasteners periodically over time.
5. Do not climb on the net or framework.
6. ALWAYS anchor goal.
7. Goal can fall over causing serious injury or death.
8. Check for damaged parts or hardware before each use; replace broken or missing hardware, fasteners, or other parts immediately.
9. Do not remove warning labels under any circumstance; Warning labels should always be clearly visible, placed under crossbar and on the sides of the uprights at eye level.
10. Goals should be disassembled with nets removed for seasonal storage.
11. Always exercise extreme caution when moving soccer goals and allow adequate manpower to move goals of varied sizes and weights.  
Movable soccer goals should only be moved by authorized and trained personnel.
12. Store movable soccer goals in a place where children cannot have access to them. If this is not possible, anchor/chain goal to a stable, static structure such as a fence or concrete wall.
13. **Always instruct players, managers, coaches, trainers, teachers, maintenance and other personnel who might come into contact with goal on the safe handling of and potential dangers associated with movable soccer goals.**

PEVO Sports Co.  
Phone: (910) 397-9388

212 Transcom Ct  
Wilmington, NC 28401

Email: [info@pevosports.com](mailto:info@pevosports.com)  
[www.pevosports.com](http://www.pevosports.com)

# Stadium Series Movable Soccer Goals

## SGM-8x24STB

### General Notes:

1. It will take two adults approximately 30 minutes to assemble this goal.
2. Tools Required:
  - a. 9/16" Wrench (or Adjustable Wrench)
  - b. 3/4" Wrench (or Adjustable Wrench)
  - c. Hex Key (Allen Wrench) - Included
  - d. Ladder or stepstool

### Assembly Instructions:

3. Remove all hardware from packaging and inspect to make sure it matches below list and there is no damage.

Item	Qty. Per Goal	Total
Crossbar Tube (with PEVO Label)	1	
Upright (with Warning and PEVO Labels)	2	
Base Tube (With Wheels)	2	
Ground bar, Crossbar, and Channel Spacer (Plastic Piece)	4	
4" Rear Ground bar	1	
2" Channel Adjustable Ground bar	1	
"Z" Ground bar Bracket (Installed)	2	
2-1/4" x 5/16" Carriage Bolt with Flat Washer, Lock Washer, and Nut	4	
Tension Straps	3	
Net	1	
Tamper Proof Net Fasteners	80	

4. Lay out pieces as seen in Figure 1 below



5. Connect Uprights to Bases (component with wheels) & tighten. Repeat on other side. Do not overtighten\* See image below



6. Insert Channel Spacer (plastic piece) with holes lined up and connect ground bar (4" round with center stub) to rear of bases and tighten. Repeat on other side. See image below. **NOTE: Slight tapping on the Tube may be required on the first assembly. BE CAREFUL NOT TO DAMAGE TUBES.**





7. Flip up and connect crossbar. Insert Channel Spacers with holes lined. Repeat on each side. See image below.

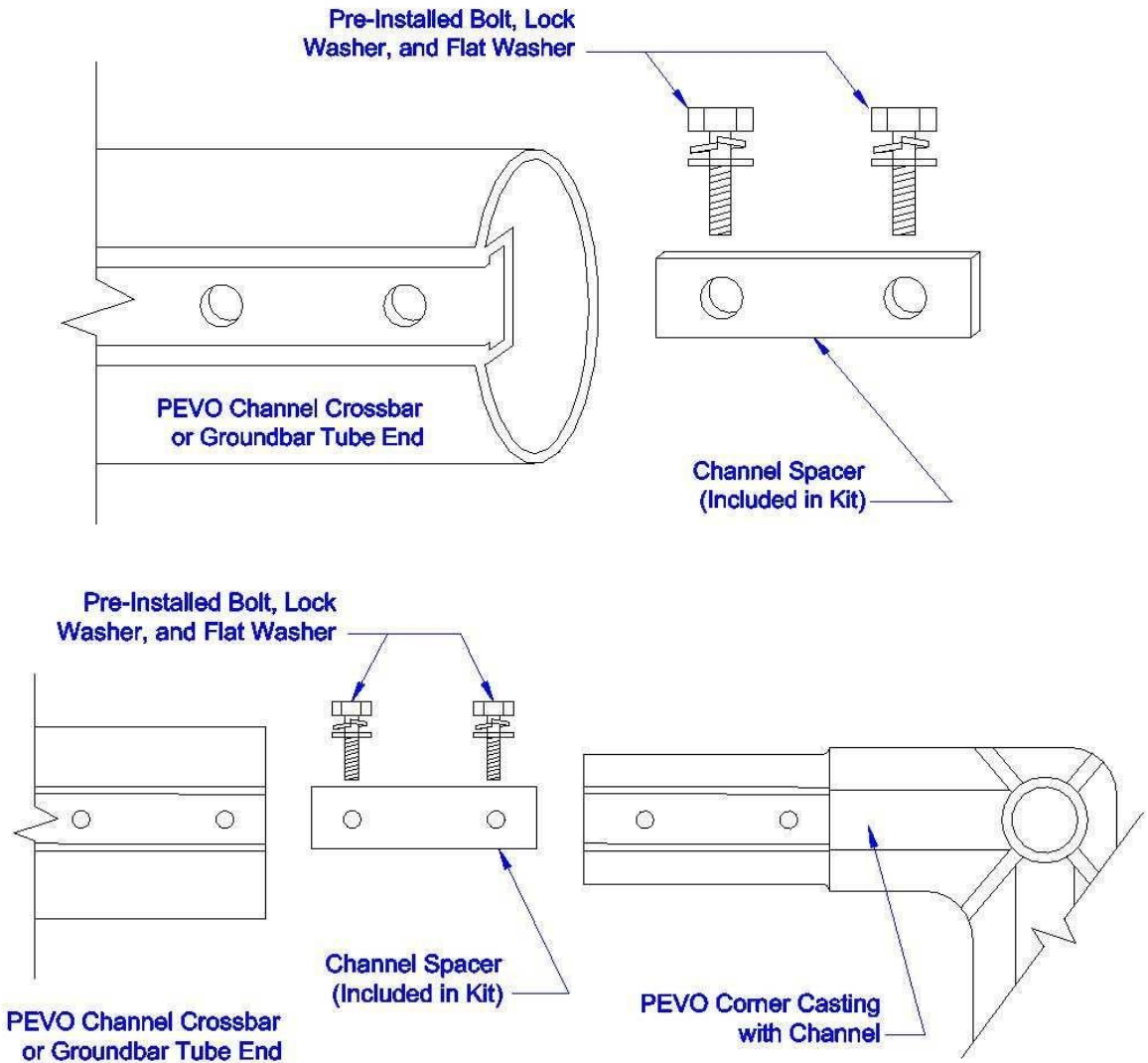


8. With frame of the goal face down, attach net to crossbar and uprights (PEVO Net Labels go in the Top Corners). See image below.



9. Mount Ground bar onto "Z" bracket at either side using (2) 2-1/4" Carriage Bolts with a Flat Washer and Nylock nut. See image below.





10. Connect 3 stanchions to ground bar and tighten at the bottom. See image below

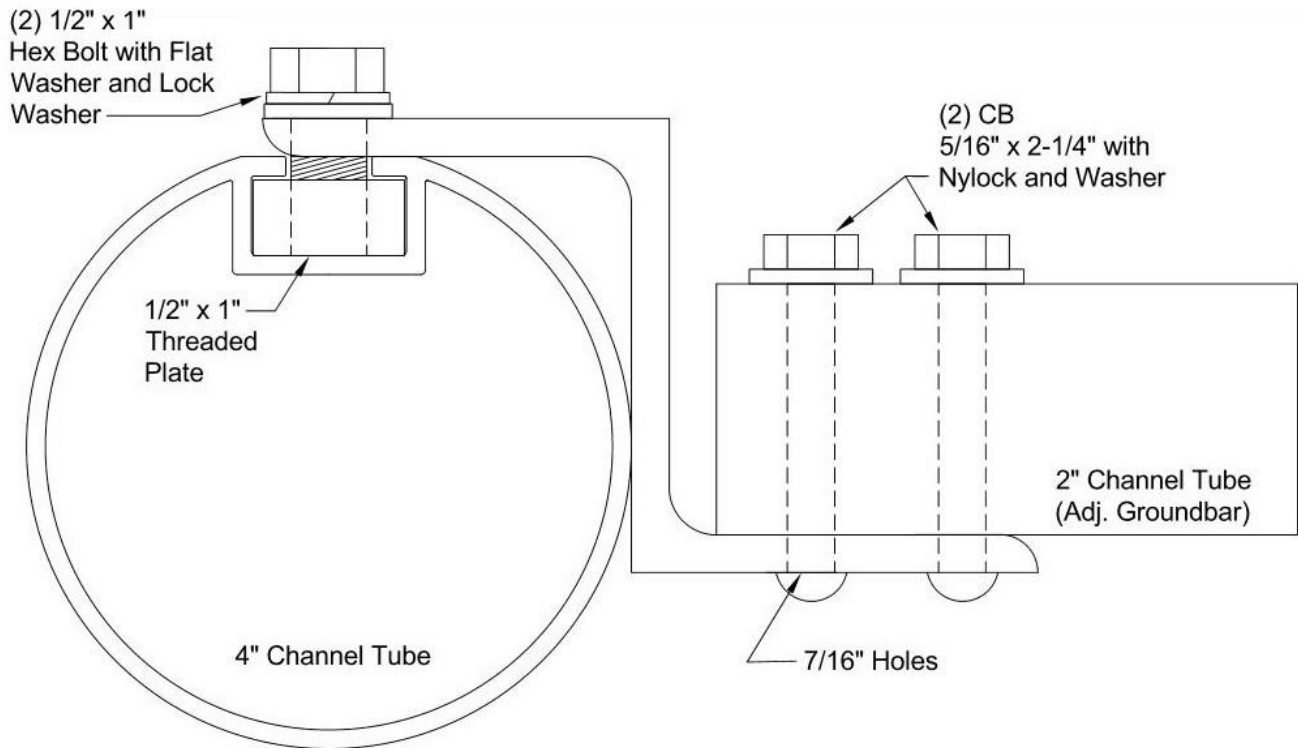


PEVO Sports Co.  
Phone: (910) 397-9388

212 Transcom Ct  
Wilmington, NC 28401

Email: [info@pevosports.com](mailto:info@pevosports.com)  
[www.pevosports.com](http://www.pevosports.com)





11. Cautiously using a ladder or stepstool, attach net straps to the corner of the net and lightly tighten to get starting box shape. Finish with center stanchion strap last. See image below.



12. Attaching remainder of net to the bases and ground bar.
13. Cautiously using the ladder, tighten net straps to preference. **DO NOT OVERTIGHTEN**

14. Ensure net is completely attached to Goal Assembly.
15. Ensure all Bolts & Screws are all still properly tightened.



**PEVO Sports Co.**  
**Phone: (910) 397-9388**

**212 Transcom Ct**  
**Wilmington, NC 28401**

**Email: [info@pevosports.com](mailto:info@pevosports.com)**  
**[www.pevosports.com](http://www.pevosports.com)**