

Adding an LTO Drive to the mTape Enclosure

Instructions to open the enclosure and reassemble

The tools needed to open the and re-assemble the mTape enclosure are (See Image 1A):

- Phillips Head Screw Driver
- Size 10 Pin-in-Torx Security Bit (for the Back Panel, see image 1B)
- Size 7/64 Allen Wrench (for the Front Bezel)



Image 1A



Image 1B

Set the unit upright with the Front Bezel on the table as seen in Image 2A (make sure to use a soft surface or a towel to avoid scratching the Front Bezel).



Image 2A

Remove the 3 black Torx screws and 1 Phillips head screw from the four corners. (See image 2B with the screws removed).



Image 2B

Flip the unit over as shown in image 3A.



Image 3A

Remove the 4 Allen head screws from the four corners. (See image 3B with the screws removed and the Front Bezel lifted off).



Image 3B

Remove the front Face Plate as seen in Image 4A.



Image 4A

Remove the 2 Phillips head screws and lift off the Face Plate. (See image 4B with the screws removed.)



Image 4B

Now that all the screws from the Back Panel, Front Bezel and Face Plate are removed, slide the outer Enclosure up and off the Inner Chassis as seen in Image 5A.



Image 5A

Carefully slide off the outer Enclosure and set aside as seen in image 5B.

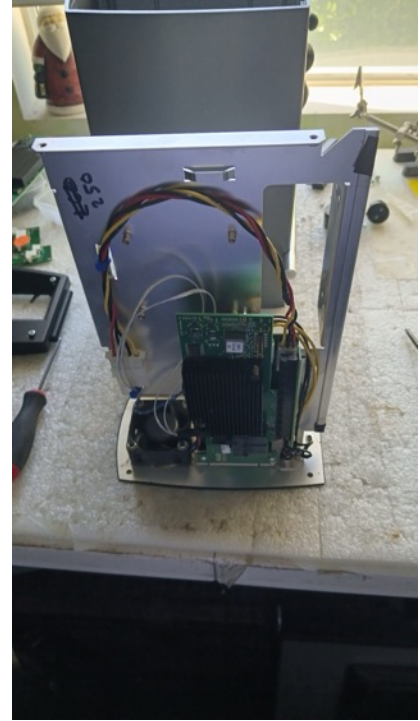


Image 5B

Lay the Inner Chassis down flat on the table as shown in Image 6A.

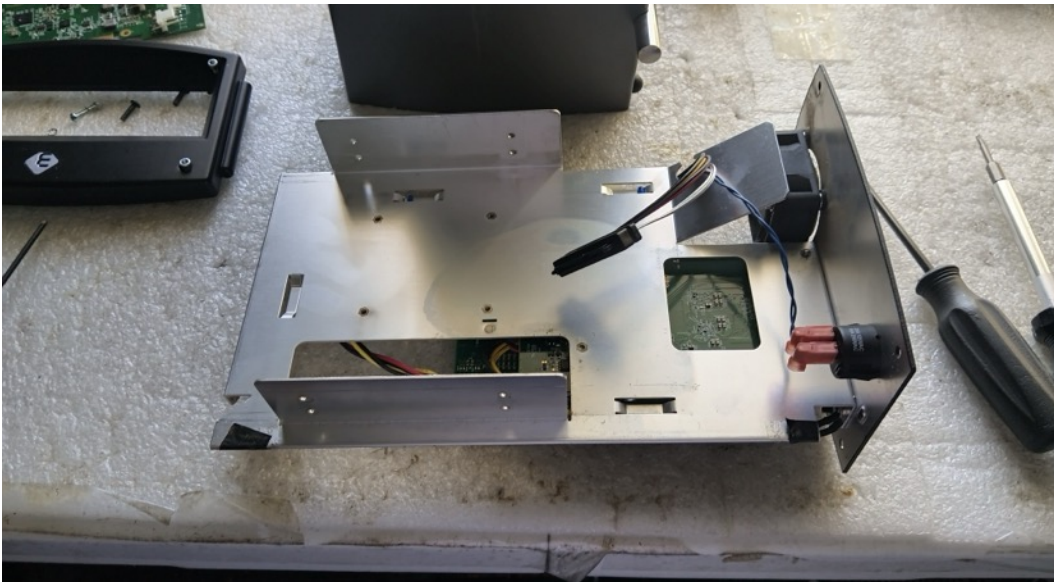


Image 6A

In this image you can see the exposed SAS cable that the LTO drive will plug into.



Slide the drive in between the 2 walls of the Inner Chassis.



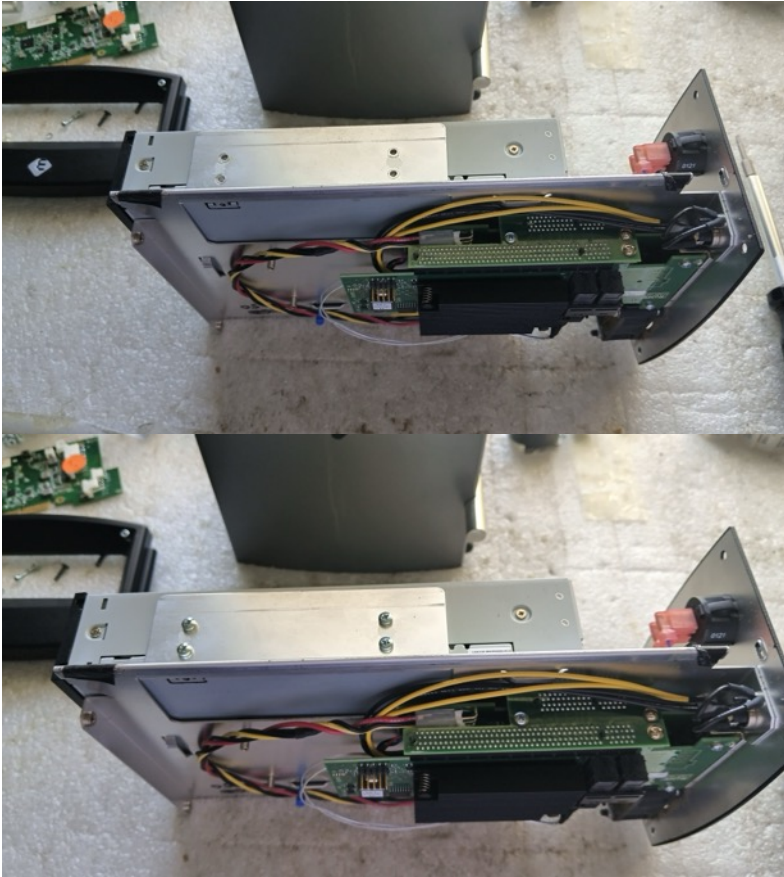
Attach the SAS cable. It is keyed so it can only insert into the drive one way.



Tip the Inner Chassis up on its side so we can line up the holes and insert the provided LTO drive screws.



Using a Phillips screw driver, secure the 4 screws as seen in this image.



Flip the Inner Chassis over to the other side so we can secure the other 4 screws.

Screw in the remaining 4 screws so that the LTO drive is secured with all 8 screws.

Stand up the Inner Chassis as shown in Image 7A.



At this point we are going to start re-assembling the outer Enclosure.

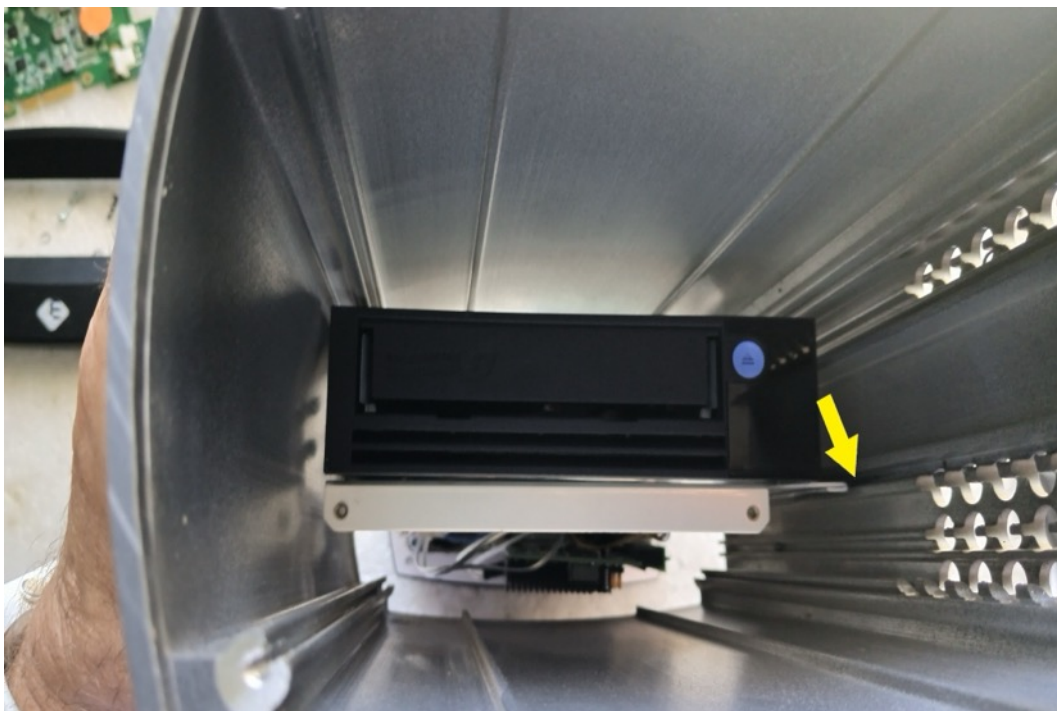
Image 7A

With the Inner Chassis standing up on the Back Panel, slide the outer Enclosure back onto the Inner Chassis as seen in Image 8A.

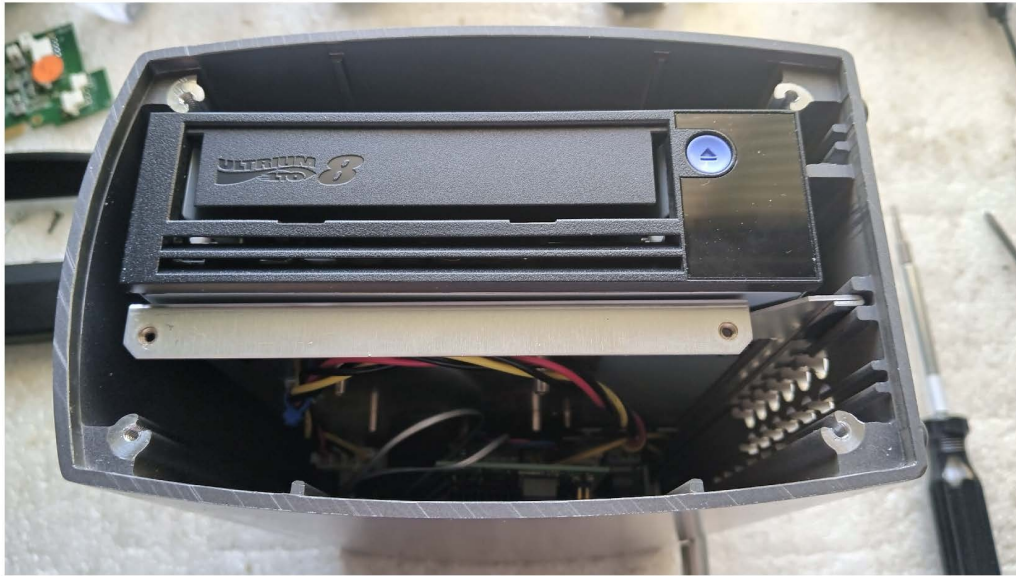


Image 8A

Position the outer Enclosure so that the rubber feet and silver “foot” are facing to the right as shown.



There is a channel in the Enclosure (indicated by yellow arrow) that engages the Inner Chassis.



With the Inner Chassis all the way inserted into the Outer Enclosure we now re-install the Face Plate.



Secure the Face Plate with the 2 Phillips head screws and 2 lock washers as seen in this image.

Flip the unit over so that the Back Panel is facing up as seen in Image 9A.



Image 9A

Re-install the 3 black Torx Screws and 1 Phillips screw as seen in Image 9B



Image 9B



Attach the supplied Warranty Void sticker over the Phillip screw on the Back Panel.

Flip the unit back over again to re-install the Front Bezel as seen in Image 10A.



Image 10A

Install the 4 Allen head screws in the 4 corners of the Front Bezel and screw in place as seen in Image 10B.



Image 10B

Un-assembly and re-assembly of the mLogic mTape is complete!

Refer the mTape Manual to set up the unit with your computer...

<https://tinyurl.com/murjuw8j>