



X1 for mLogic mTape Thunderbolt LTO*

Storage Appliance

*Cloud Enabled



X1 for mTape LTO

What does it do?



Archive | Backup | Share

- ❖ Archives to LTO over your network - manages unlimited LTO cartridges
- ❖ Backup to cloud – accessible for DR
- ❖ Share files in cloud – access worldwide

X1 for mLogic mTape Thunderbolt LTO

Manages one or more attached mTape Thunderbolt LTO drives

X1 Appliance



Thunderbolt

Network



mTape LTO Drive

X1 for mTape LTO

Auto replicate with two or more mTape LTO drives

X1 Appliance



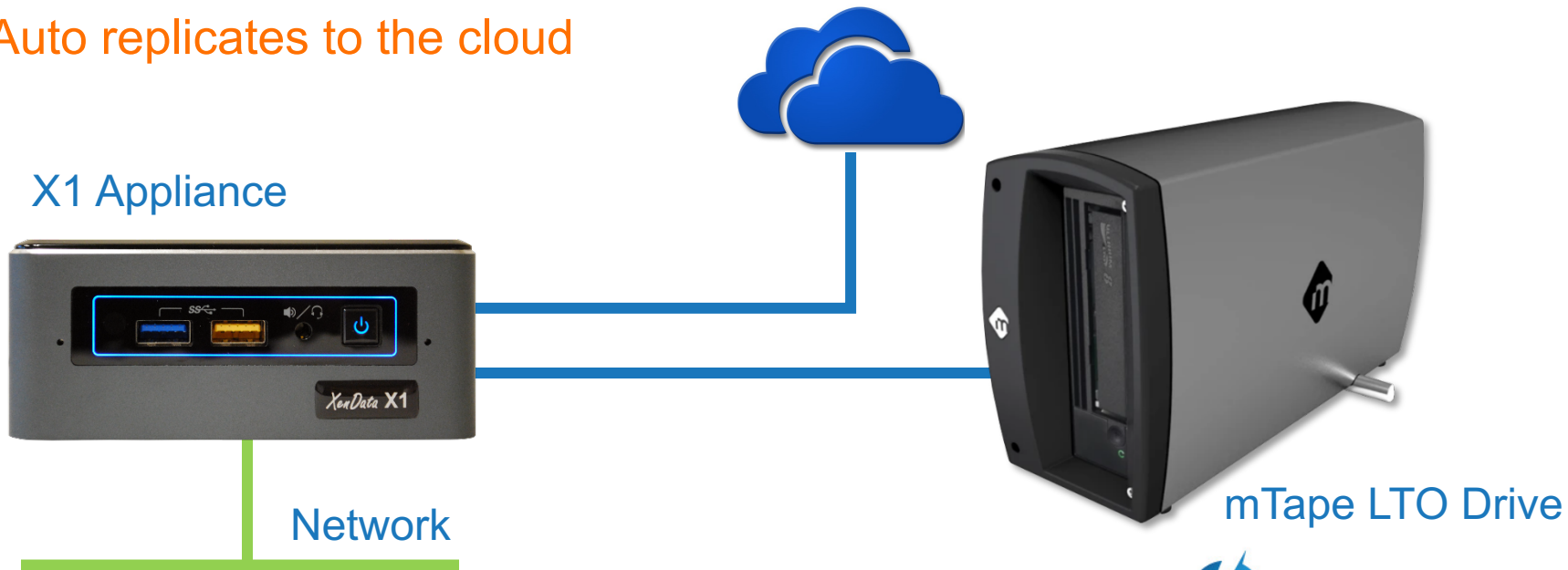
Network



X1 for mTape LTO

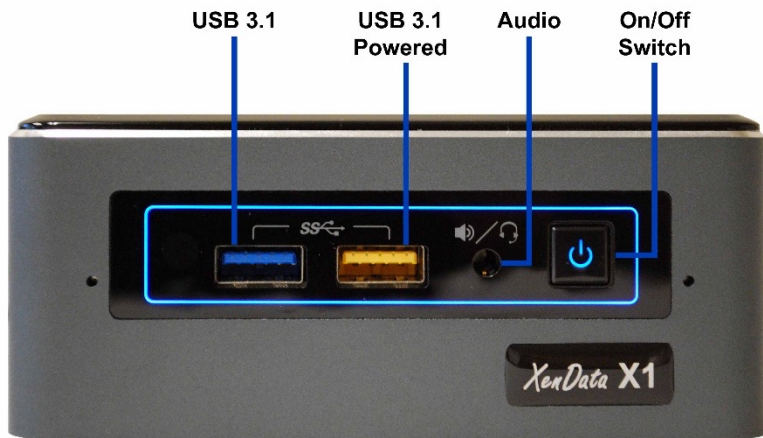
AWS S3 | Azure | Wasabi S3

Auto replicates to the cloud

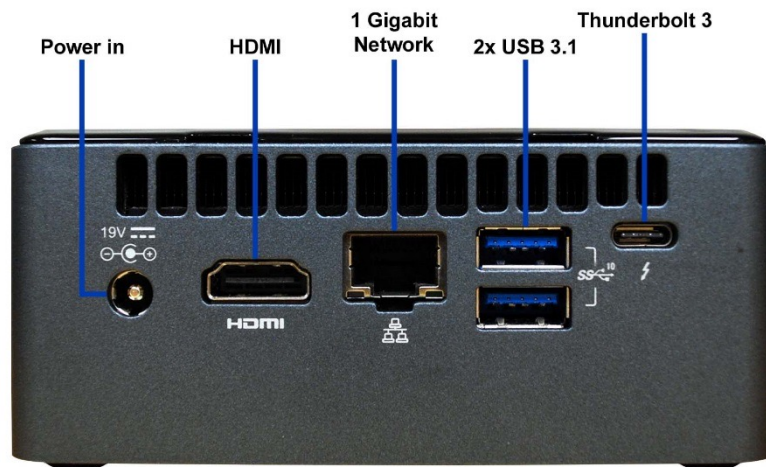


mTape LTO Drive

X1 Close Up



Front



Rear

X1 Mounting



Free Standing



Versa Mount

Ways to Write to an X1

1. Write directly to an X1 Network Share

Great for archiving to mTape LTO and/or cloud

2. Sync any Network Share to the X1

Mirror provides backup copy

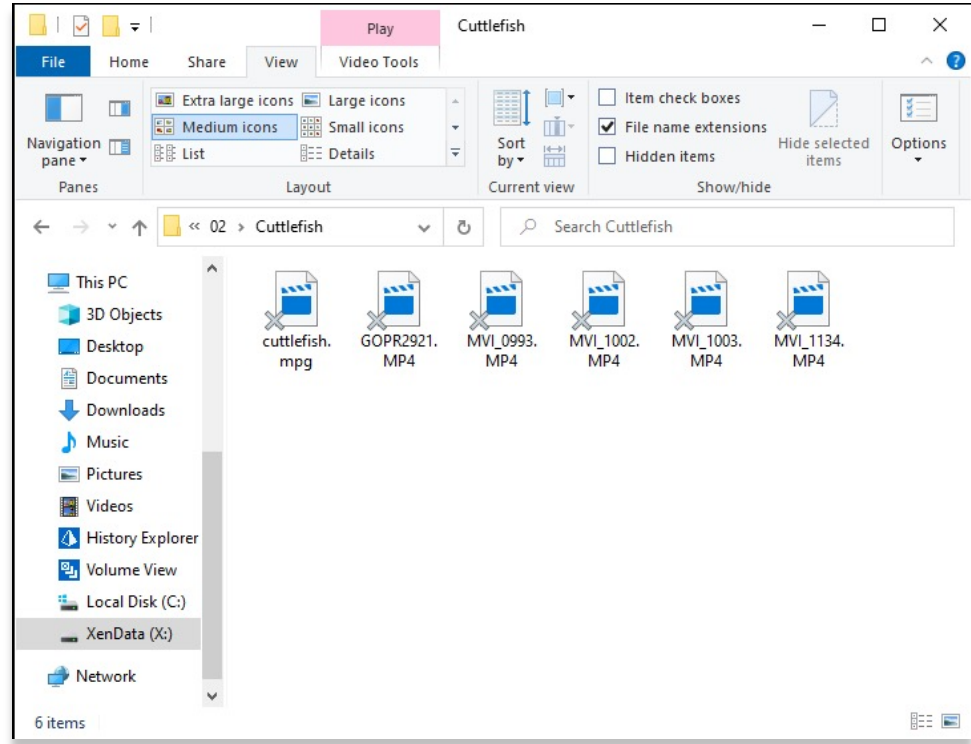
X1 Appliance



Write directly to an X1 Share

mTape LTO Archive

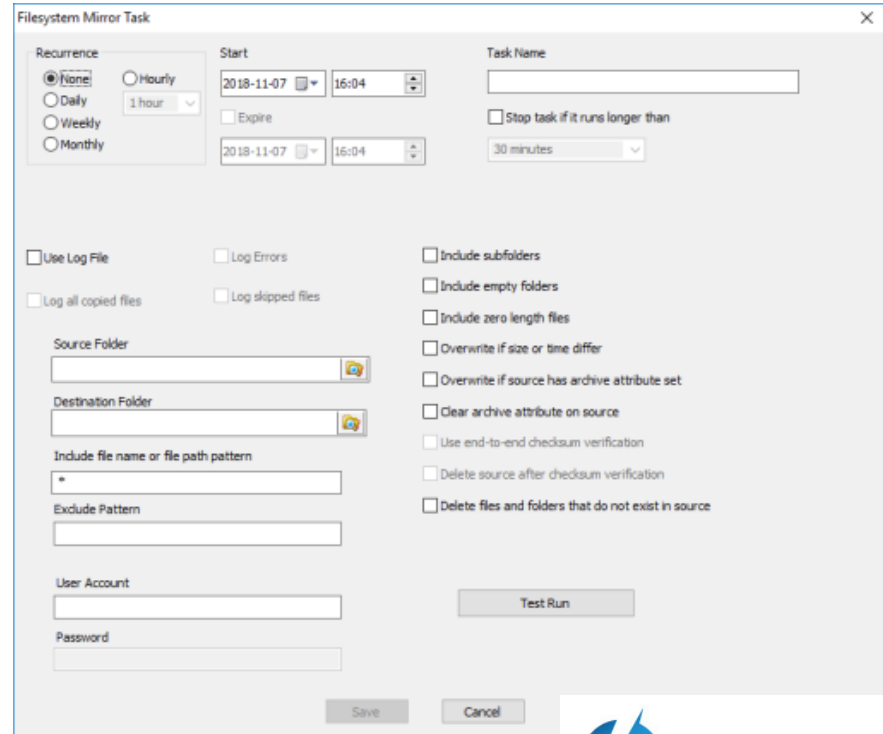
- ❖ Access via network or locally
- ❖ Manages unlimited number of offline LTO cartridges



Sync Any Share to the X1

Backup & DR

Create mirror copies of any accessible file system on mTape LTO and/or cloud. Cloud copies are available worldwide.



The screenshot shows the 'Filesystem Mirror Task' configuration window. It includes the following sections:

- Recurrence:** Radio buttons for None (selected), Daily, Weekly, and Monthly. An 'Hourly' option is also present with a '1 hour' dropdown.
- Start:** Two date and time pickers, both set to 2018-11-07 at 16:04. An 'Expire' checkbox is present.
- Task Name:** An empty text input field.
- Stop task if it runs longer than:** A dropdown menu set to '30 minutes'.
- Logging:** Checkboxes for 'Use Log File', 'Log Errors', 'Log all copied files', and 'Log skipped files'.
- Include options:** Checkboxes for 'Include subfolders', 'Include empty folders', 'Include zero length files', 'Overwrite if size or time differ', 'Overwrite if source has archive attribute set', 'Clear archive attribute on source', 'Use end-to-end checksum verification', 'Delete source after checksum verification', and 'Delete files and folders that do not exist in source'.
- Source and Destination:** Text input fields for 'Source Folder' and 'Destination Folder', each with a folder selection icon.
- Patterns:** Text input fields for 'Include file name or file path pattern' (containing '*') and 'Exclude Pattern'.
- User Account:** Text input fields for 'User Account' and 'Password'.
- Buttons:** 'Test Run', 'Save', and 'Cancel' buttons.