

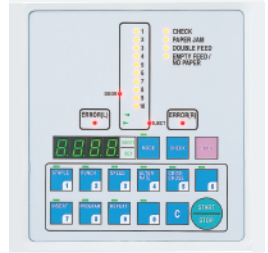
## ➔ FC 10 TWIN TOWER SYSTEM

**AUTOMATIC 20-BIN FRICTION COLLATING SYSTEM** · collates variety of paper stocks and weights at speeds up to 3,600 sets per hour\* · 275 sheet bin capacity\* · high capacity stacker · collator units can be used in tandem or separately while connected · touch-button control panel with LED 4 digit counter simplifies set-up and operation · programming modes include preset batch, insertion, and an alternate bin mode for continuous production · adjustable stacking table for straight or criss-cross stacking · self-centering feed guides eliminate the need to reposition on-line bookletmakers for different size stock · adjustable feed and separator pressures on each bin · "bin empty" sensor · extra large, detachable feed trays · bases with casters are optional (shown)

Dimensions (D x W x H): 27 5/8 x 86 1/2 x 41 1/4 inches (90 1/2 W, 63 H with bases), Shipping weight: 487 lbs. (587 with bases)



### CONTROL PANEL



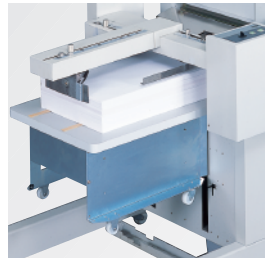
Programming and operation is controlled from an easy-to-use touch-button control panel.

### CRISS-CROSS STACKING



The criss-cross stacking feature allows easy set separation.

### HIGH CAPACITY STACKER



The high capacity stacker can stack up to 3,200 collated sheets (straight or offset).

### ➔ FC 10 TWIN TOWER

Number of bins	20
Bin capacity	275 sheets*
Paper size	3 1/2" x 5 7/8" to 12 1/8" x 18 1/2"
Paper weight	20 to 100 lbs.
Speed	3,600 sets/hr*
Power supply	110 V, 60 Hz

\* may vary due to variations in paper and power supply

Dealer:

**WWW.WHITAKERBROTHERS.COM**  
3 TAFT COURT  
ROCKVILLE, MD 20850  
800-243-9226

**MBM**  
CORPORATION

**IDEAL.MBM**  
CORPORATION