

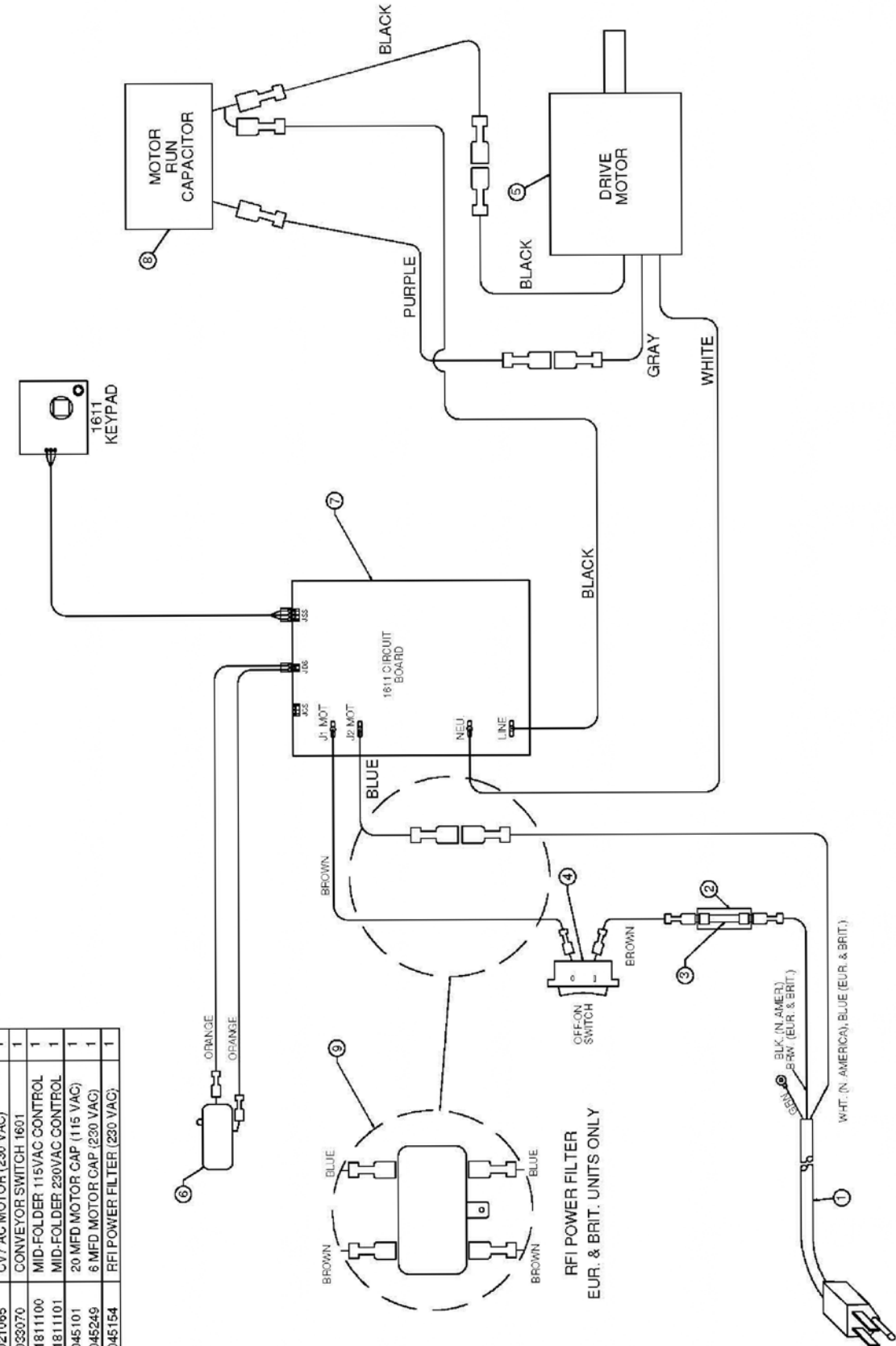


1611 Ease-of-Use Autofolder Parts List & Diagrams



251 Wedcor Avenue • Wabash, IN 46992
 Phone: (260)563-0641 • Fax: (260)563-4575
 Website: www.martinyale.com • Email: info@martinyale.com

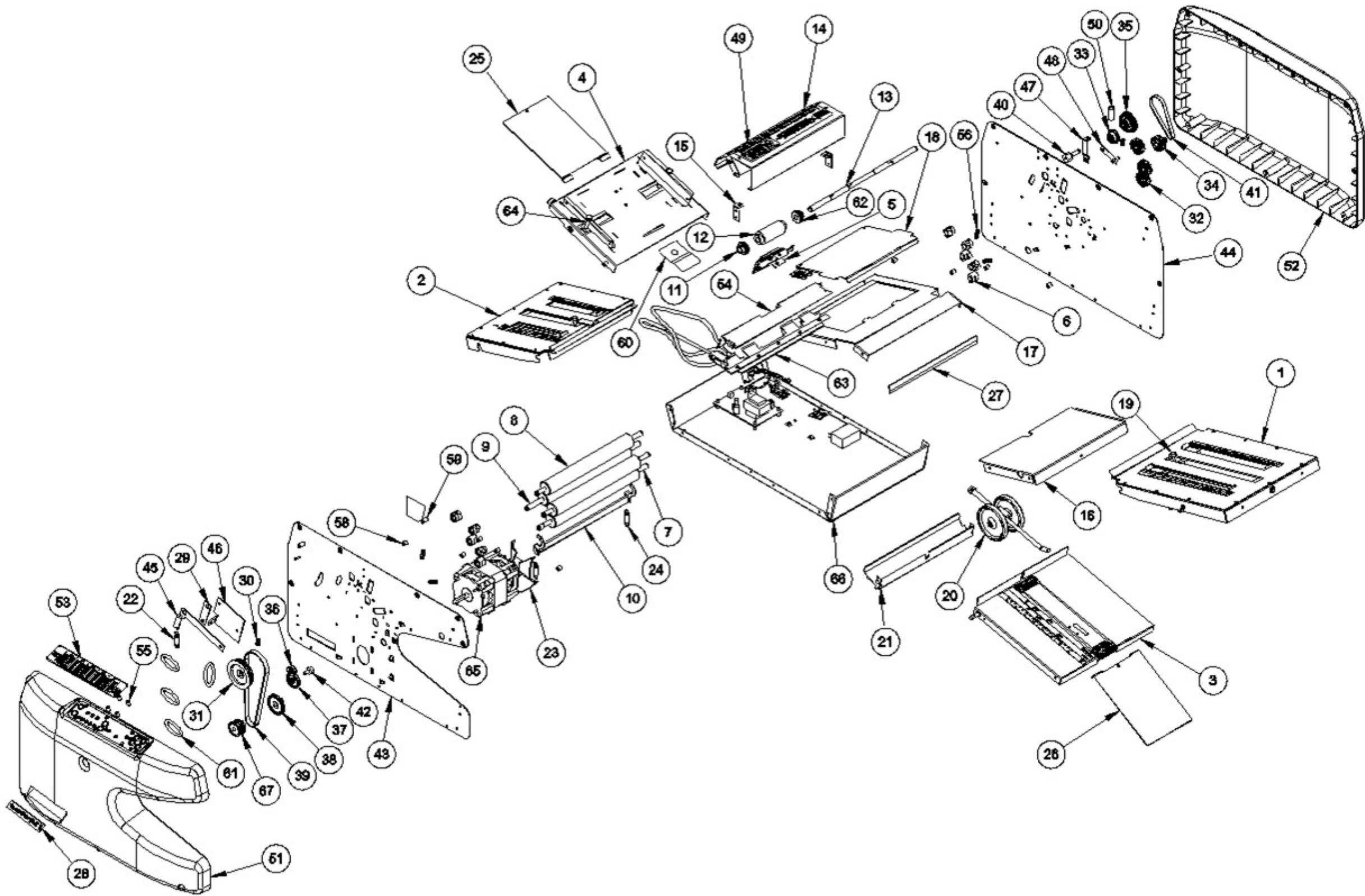
| Fig. | Part Number | Description | Qty. |
|------|-------------|----------------------------|------|
| 1 | M-S037020 | 115V N. AMERICAN LINE CORD | 1 |
| | M-S037286 | EUROPEAN CORD, 10 AMP | 1 |
| | M-S045177 | BRITISH LINE CORD, 3 AMP | 1 |
| 2 | M-S045231 | FUSE HOLDER | 1 |
| 3 | M-S63601106 | FUSE 5 AMP (115 VAC) | 1 |
| | M-S045028 | FUSE, 3A, 250V (230 VAC) | 1 |
| 4 | M-S033053 | SPST ROCKER SWITCH O-1 | 1 |
| 5 | M-S021064 | 110V MOTOR 150YX AC | 1 |
| | M-S021065 | CV7 AC MOTOR (230 VAC) | 1 |
| 6 | M-S033070 | CONVEYOR SWITCH 1601 | 1 |
| 7 | M-O1811100 | MID-FOLDER 115VAC CONTROL | 1 |
| | M-O1811101 | MID-FOLDER 230VAC CONTROL | 1 |
| 8 | M-S045101 | 20 MFD MOTOR CAP (115 VAC) | 1 |
| | M-S045249 | 6 MFD MOTOR CAP (230 VAC) | 1 |
| 9 | M-S045154 | RFI POWER FILTER (230 VAC) | 1 |



1611 Wiring Diagram

1611 Parts List & Diagram

| Item | Part No. | Description | Qty |
|------|------------|--------------------------------|-----|
| 1 | W-A1617022 | 1611 1st Fold Table Assy | 1 |
| 2 | W-A1617024 | 1611 2nd Fold Table Assy | 1 |
| 3 | W-A1601036 | Conveyor Table Assy | 1 |
| 4 | W-A1617003 | Feed Table Assembly | 1 |
| 5 | W-A1617054 | Retarder Assembly | 1 |
| 6 | M-S013009 | 3/8 ID Brg w/Flats | 10 |
| 7 | WRA1617115 | Pack Grind 4th Roller | 1 |
| 8 | WRA1617114 | Pack Grind 3rd Roller | 2 |
| 9 | WRA1617113 | Pack Grind 2nd Roller | 1 |
| 10 | W-O1617008 | Paper Diverter 1611 | 1 |
| 11 | W-N1617092 | Paper Hold Down Wheel | 2 |
| 12 | WRA1617089 | Mold Feed Tire | 1 |
| 13 | W-O1617061 | Feed Shaft | 1 |
| 14 | W-A1617034 | Top Cover Assembly | 1 |
| 15 | W-O1617091 | Pem Top Cover Mount Brkt | 2 |
| 16 | W-O1617031 | Pem Fold Table Support | 1 |
| 17 | W-F1617032 | P/C Motor Cover | 1 |
| 18 | W-F1617118 | P/C PCB Access Panel | 1 |
| 19 | WRA003087 | Fold Table Adj Screw | 2 |
| 20 | W-A1617065 | Conveyor Stack Wheels | 1 |
| 21 | W-O1617066 | Exit Deflector | 1 |
| 22 | M-S031013 | Ext. Spring | 1 |
| 23 | M-S037094 | 4" Fan Left H. Plastic | 1 |
| 24 | M-S031103 | E-Spr.18x1.0x.015 | 2 |
| 25 | W-O1601043 | P/C Paper Support | 1 |
| 26 | W-O1601038 | P/C Catch Tray | 1 |
| 27 | M-O2051076 | Anti-Static Strip | 1 |
| 28 | M-O1617121 | 1611 Logo Label | 1 |
| 29 | W-O1617140 | Friction Plate | 1 |
| 30 | M-S031115 | .026 x .30D x .5L Comp. Spring | 2 |
| 31 | M-O1601083 | Pulley Gear Combo | 1 |
| 32 | M-O1601086 | Roller Gear | 3 |
| 33 | W-A1617143 | Feed Clutch Gear Assy | 1 |
| 34 | M-O1617033 | Feed Wheel Drive Combo | 1 |
| 35 | M-O001685 | 60/22T Pulley/Gear | 1 |
| 36 | M-O1601081 | Conveyor Drive Gear | 1 |
| 37 | M-O1601082 | Conveyor Step Gear | 1 |
| 38 | M-O1601080 | Conv. Gear, Driven | 1 |
| 39 | M-S025055 | 140T 3mm HTD Belt | 1 |
| 40 | W-O1617111 | Feed Idler Stud | 1 |
| 41 | M-S025004 | 105T MXL Belt 1/4"W | 1 |
| 42 | M-O1601062 | Conv. Step Gear Stud | 1 |
| 43 | W-O1617070 | Pem Front Frame | 1 |
| 44 | W-O1617069 | Rivet Back Frame | 1 |
| 45 | W-O1617037 | Feed Table Spring Plate | 1 |
| 46 | W-O1617060 | Feed Table Adj Plate | 1 |
| 47 | W-O1617103 | Pem Retarder Adj Brkt | 1 |
| 48 | W-O1617043 | Pem Retarder Bellcrank | 1 |
| 49 | M-O1617106 | Top Cover Sticker | 1 |
| 50 | M-S019076 | Retaining Spacer Sprt 105 | 1 |
| 51 | M-O1617119 | 1611/1711 Front Cover | 1 |
| 52 | M-O1617120 | 1611/1711 Back Cover | 1 |
| 53 | M-O1617126 | 1611 Display Label | 1 |
| 54 | W-A1617039 | Feed Bridge Assembly | 1 |
| 55 | M-O1617145 | 1711 Display Standoff | 4 |
| 56 | M-S031034 | Comp. Spring Red | 4 |
| 58 | M-S019060 | 10-32 x 5/16 x 5/16 Standoff | 10 |
| 59 | M-S019061 | 10-32 x 5/16 x 1/2 Standoff | 2 |
| 60 | WRA1617131 | Lift Spring W/Tape Assembly | 1 |
| 61 | M-S037422 | O-Ring, 322, Buna-N | 4 |



| Item | Part No. | Description | Qty |
|------|------------|---------------------------|-----|
| 62 | M-S037421 | O-Ring, 210, Neoprene | 2 |
| 63 | W-A1617141 | Paper Feed Deflector Assy | 1 |
| 64 | WRA003016 | Paper Guide Adj Screw | 2 |

| Item | Part No. | Description | Qty |
|------|--------------|---------------------|-----|
| 65 | M-S021064 | 110V Motor 1501X AC | 1 |
| 66 | W-A1617117-1 | 1611 Base Assembly | 1 |
| 67 | M-S022124 | 3mm HTD 30T | 1 |

Used on 115V Only (pictured)

| Item | Part No. | Description | Qty |
|------|--------------|--------------------|-----|
| 65 | M-S021065 | CV7 AC Motor 220V | 1 |
| 66 | W-A1617117-3 | 1611230 Base Assy | 1 |
| 67 | M-S022143 | 32T 3mm HTD Pulley | 1 |

Used on 230V Only (not pictured)