



aimée wilder

mamba layout and color guide
for cement & ceramic tiles

mamba

size and color specifications

8 x 8 inches = 0.44 sq. feet per tile

20 x 20 centimeters = 0.04 sq. meters
per tile

8" | 20 cm



8"
20 cm



*Color and size are customizable for
this product.

to view more products and styles, visit
aimeewilder.com

to place an order, email
info@aimeewilder.com

aimee wilder



azure swan



pearl swan



ebony swan



suede tan



mango swan

mamba

circles in pearl swan



what to order

Mamba in Pearl Swan

Cement tile minimum: 15 boxes of 12 tiles
= 180 tiles

Ceramic tile minimum: 6 boxes of 20 tiles
= 120 tiles

We recommend a 20% overage on all tile orders.

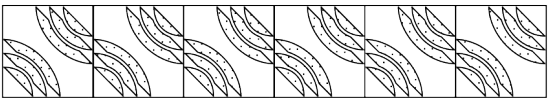
info and design consultation

Please visit the tile info section on our website for more details on specs, testing, installation, and commercial orders. We are happy to help calculate quantities plus necessary overage and to assist you in your customized tile layout. Please email info@aimeewilder.com.

layout

To make the Circles pattern of Mamba tiles, place the first tile pointing up left, the next up right, then up left, next up right, and so on, alternating across the row. The next row mirrors the one above it — start with a tile pointing up right, then up left, and so on, alternating across the row. The third row is like the first, the fourth row like the second — and so on, until the area is covered.

tile directions

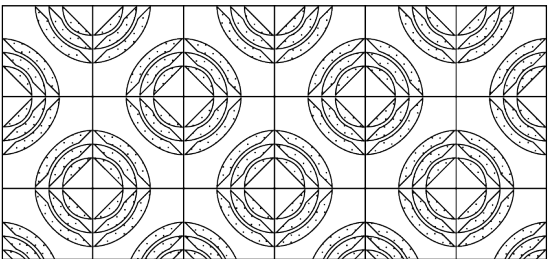


↖ left



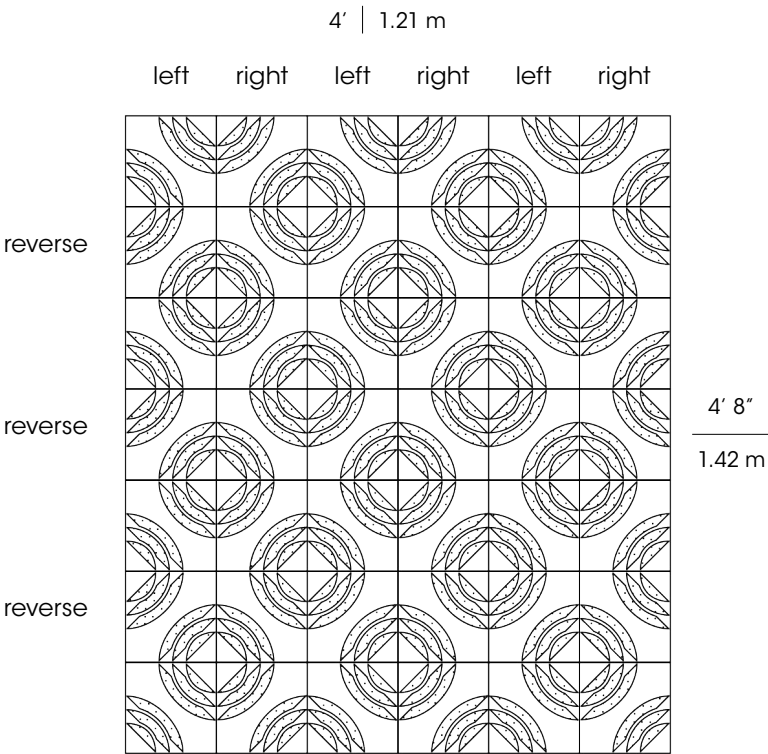
right ↗

tile alignment



straight

tile placement



4 x 4.67 feet = 18.33 square feet

1.21 x 1.42 meters = 1.7 square meters

to view more products and styles, visit
aimeewilder.com

to place an order, email
info@aimeewilder.com

aimee wilder

mamba

small waves in azure swan



what to order

Mamba in Azure Swan

Cement tile minimum: 15 boxes of 12 tiles
= 180 tiles

Ceramic tile minimum: 6 boxes of 20 tiles
= 120 tiles

We recommend a 20% overage on all tile orders.

info and design consultation

Please visit the tile info section on our website for more details on specs, testing, installation, and commercial orders. We are happy to help calculate quantities plus necessary overage and to assist you in your customized tile layout. Please email info@aimeewilder.com.

layout

Small Waves is the easiest Mamba pattern. Simply alternate the direction of the tiles across the row — start with a tile pointing up left, then up right, then up left, up right, and so on. The next row is the same. The waves can be set to travel horizontally (as shown here), or vertically across your surface.

tile directions

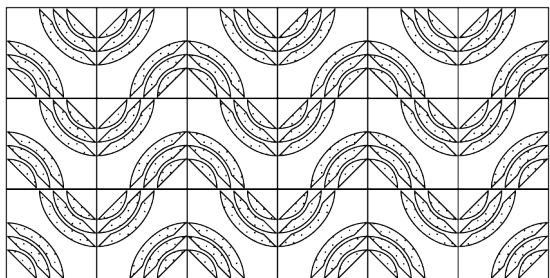


↖ left



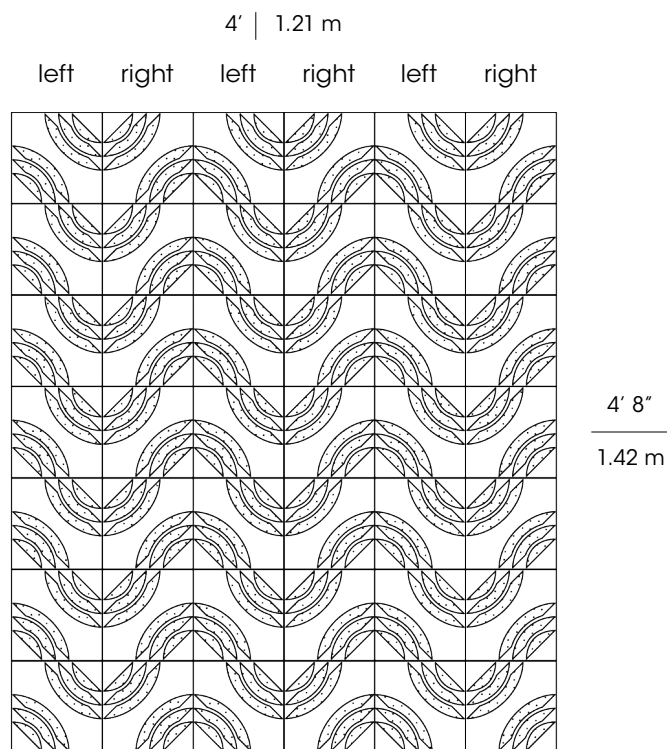
right ↗

tile alignment



straight

tile placement



4 x 4.67 feet = 18.33 square feet

1.21 x 1.42 meters = 1.7 square meters

to view more products and styles, visit
aimeewilder.com

to place an order, email
info@aimeewilder.com

aimee wilder

mamba

islands in pearl swan



what to order

Mamba in Pearl Swan

Cement tile minimum: 15 boxes of 12 tiles
= 180 tiles

Ceramic tile minimum: 6 boxes of 20 tiles
= 120 tiles

We recommend a 20% overage on all tile orders.

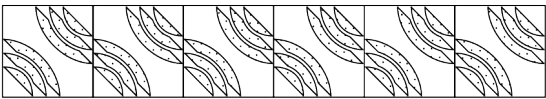
info and design consultation

Please visit the tile info section on our website for more details on specs, testing, installation, and commercial orders. We are happy to help calculate quantities plus necessary overage and to assist you in your customized tile layout. Please email info@aimeewilder.com.

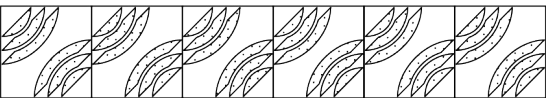
layout

In this pattern, a repeating cluster of 3 circles float like islands as wavy lines meander around like ocean currents. We advise following the diagram below to learn how this pattern lays out.

tile directions

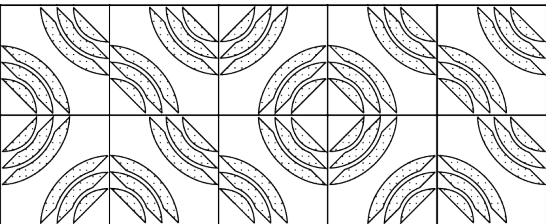


↖ left



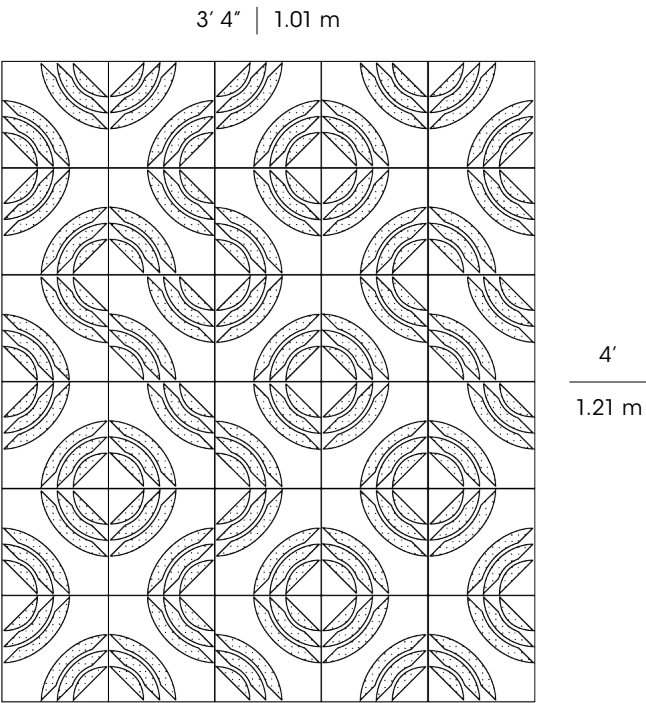
right ↗

tile alignment



straight

tile placement



3.33 x 4 feet = 13.33 square feet

1.01 x 1.21 meters = 1.22 square meters

to view more products and styles, visit aimeewilder.com

to place an order, email info@aimeewilder.com

aimee wilder

mamba

stepping stones in pearl swan



what to order

Mamba in Pearl Swan

Cement tile minimum: 15 boxes of 12 tiles
= 180 tiles

Ceramic tile minimum: 6 boxes of 20 tiles
= 120 tiles

We recommend a 20% overage on all tile orders.

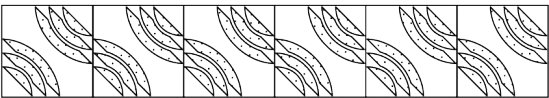
info and design consultation

Please visit the tile info section on our website for more details on specs, testing, installation, and commercial orders. We are happy to help calculate quantities plus necessary overage and to assist you in your customized tile layout. Please email info@aimeewilder.com.

layout

For this pattern, tiles alternate in pairs. Place the first 2 tiles pointing up to the right. Place the following 2 tiles pointing up to the left. Repeat this process until the row is complete. Start the next row with 2 tiles pointing up left, and the next 2 pointing up right. This row of tiles should mirror the row above. Repeat until the second row is finished. Repeat the first and second rows until the area is covered.

tile directions

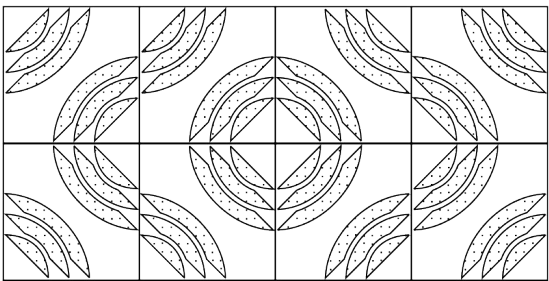


left ↖



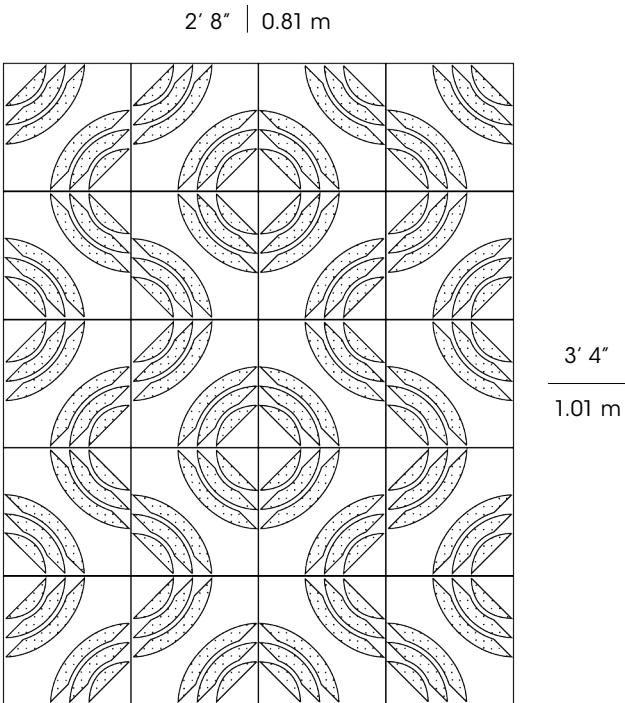
right ↗

tile alignment



straight

tile placement



2.67 x 3.33 feet = 8.34 square feet

0.81 x 1.01 meters = 0.82 square meters

to view more products and styles, visit aimeewilder.com

to place an order, email info@aimeewilder.com

aimee wilder

mamba

cross waves in suede tan



what to order

Mamba in Suede Tan

Cement tile minimum: 15 boxes of 12 tiles
= 180 tiles

Ceramic tile minimum: 6 boxes of 20 tiles
= 120 tiles

We recommend a 20% overage on all tile orders.

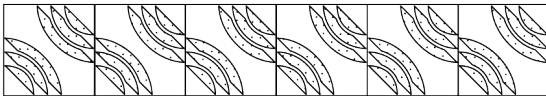
info and design consultation

Please visit the tile info section on our website for more details on specs, testing, installation, and commercial orders. We are happy to help calculate quantities plus necessary overage and to assist you in your customized tile layout. Please email info@aimeewilder.com.

layout

To make a Cross waves pattern, tiles are placed in 4 quadrants. First, calculate the area of your space to determine how many tiles you'll need. Then, divide by 4 to see how many tiles will go in each quadrant. Ideally, the center of the 4 quadrants will be the center of the area you plan to cover. In the first quarter (top left corner), place the tiles pointing up to the left. In the second quarter (top right corner), place them pointing up right. In the third quarter (bottom left corner), place the tiles pointing up right, and in the last quarter (bottom right), place them pointing up left.

tile directions

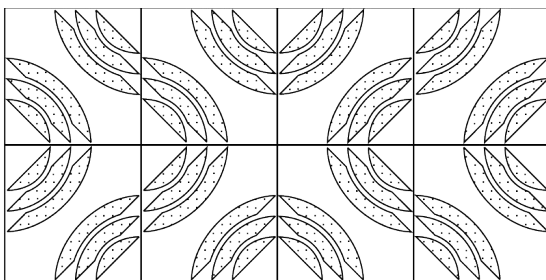


↖ left



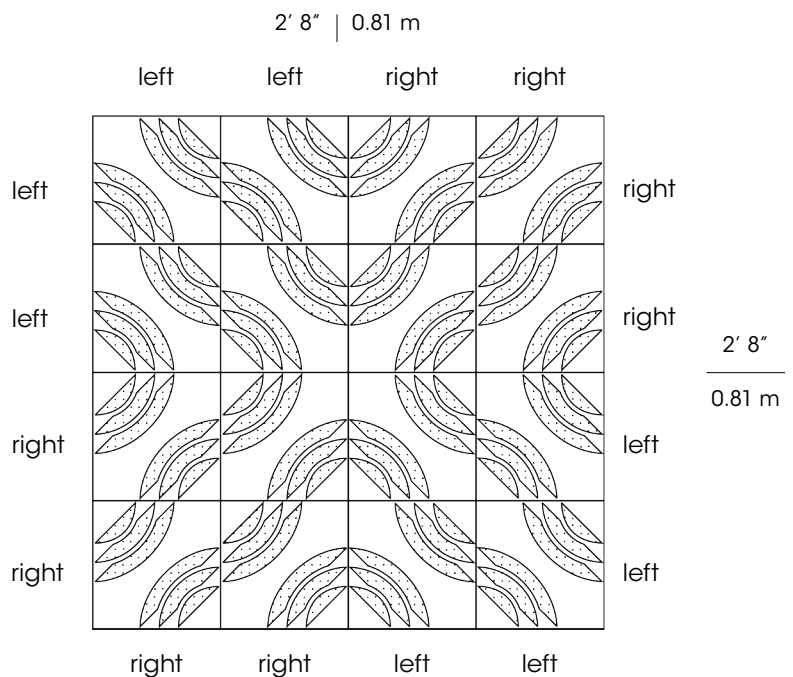
right ↗

tile alignment



straight

tile placement



2.67 x 2.67 feet = 7.13 square feet

0.81 x 0.81 meters = 0.66 square meters

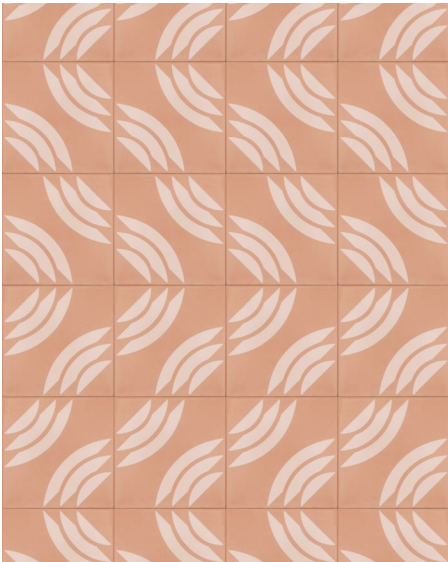
to view more products and styles, visit
aimeewilder.com

to place an order, email
info@aimeewilder.com

aimee wilder

mamba

waves in suede tan



what to order

Mamba in Suede Tan

Cement tile minimum: 15 boxes of 12 tiles
= 180 tiles

Ceramic tile minimum: 6 boxes of 20 tiles
= 120 tiles

We recommend a 20% overage on all tile orders.

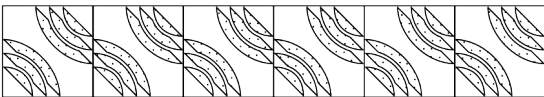
info and design consultation

Please visit the tile info section on our website for more details on specs, testing, installation, and commercial orders. We are happy to help calculate quantities plus necessary overage and to assist you in your customized tile layout. Please email info@aimeewilder.com.

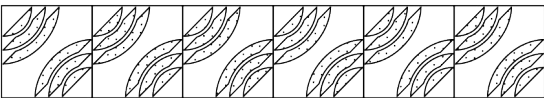
layout

To make a Waves pattern, place the first 2 rows with tiles pointing up to the left. Place the next 2 rows with tiles pointing up right. The next 2 rows point up left again, and the following 2 point up right, and so on. Continue to alternate pairs of rows like this until the area is covered completely.

tile directions

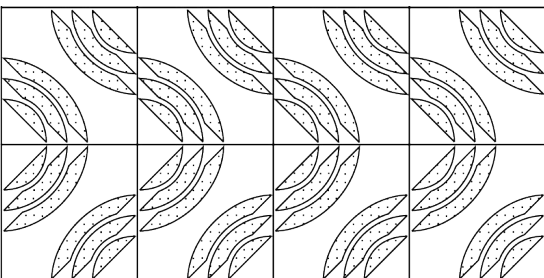


↖ left



right ↗

tile alignment



straight

tile placement

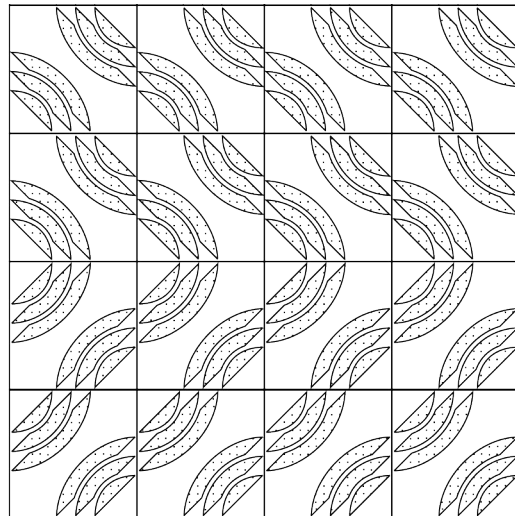
2' 8" | 0.81 m

left

left

right

right



2' 8"
0.81 m

2.67 x 2.67 feet = 7.13 square feet

0.81 x 0.81 meters = 0.66 square meters

mamba

ripples in mango swan



what to order

Mamba in Mango Swan

Cement tile minimum: 15 boxes of 12 tiles
= 180 tiles

Ceramic tile minimum: 6 boxes of 20 tiles
= 120 tiles

We recommend a 20% overage on all tile orders.

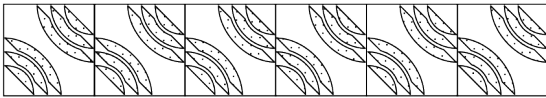
info and design consultation

Please visit the tile info section on our website for more details on specs, testing, installation, and commercial orders. We are happy to help calculate quantities plus necessary overage and to assist you in your customized tile layout. Please email info@aimeewilder.com.

layout

For the Ripples pattern, start by placing the central circle. Starting at the upper left, the first tile points up to the right, and the second points up left. The next row down, the third tile (lower left of the circle) points up left, and the fourth tile (lower right) points up right. The rest of the pattern essentially radiates out in 4 directions from these initial 4 tiles, and in each direction, all tiles point up the same way.

tile directions

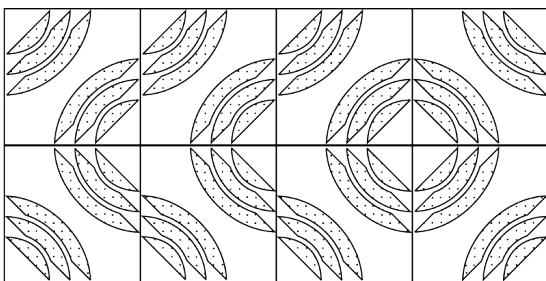


↖ left



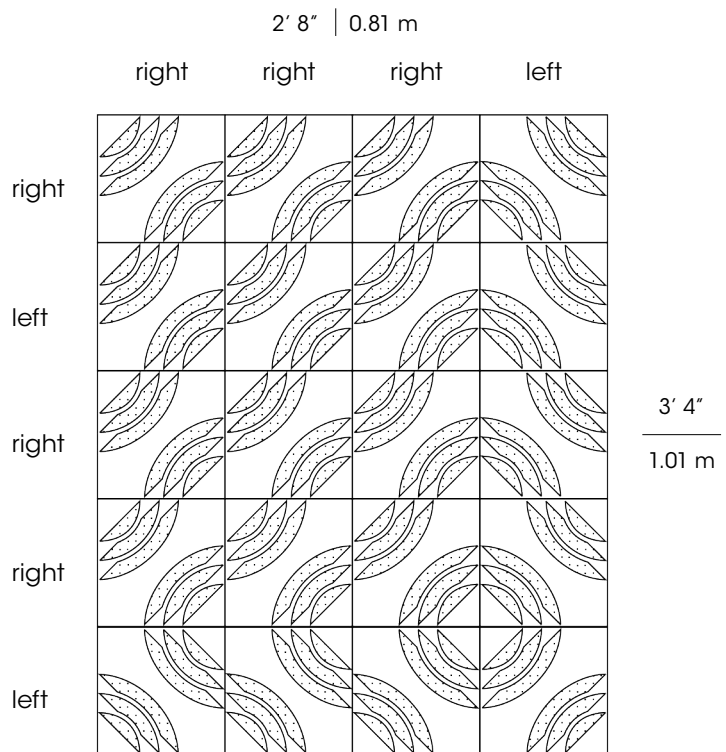
right ↗

tile alignment



straight

tile placement



2.67 x 3.33 feet = 8.9 square feet

0.81 x 1.01 meters = 0.82 square meters

to view more products and styles, visit
aimeewilder.com

to place an order, email
info@aimeewilder.com

aimee wilder

mamba

petals in mango swan



what to order

Mamba in Mango Swan

Cement tile minimum: 15 boxes of 12 tiles
= 180 tiles

Ceramic tile minimum: 6 boxes of 20 tiles
= 120 tiles

We recommend a 20% overage on all tile orders.

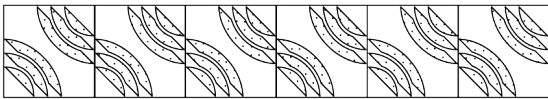
info and design consultation

Please visit the tile info section on our website for more details on specs, testing, installation, and commercial orders. We are happy to help calculate quantities plus necessary overage and to assist you in your customized tile layout. Please email info@aimeewilder.com.

layout

To make a complete Petals repeat, you need 16 tiles. Look carefully at the diagram below. Notice that tiles alternate directions in pairs across each of the 4 rows, except for the FIRST tile in row 1, and the LAST tile in row 4.

tile directions

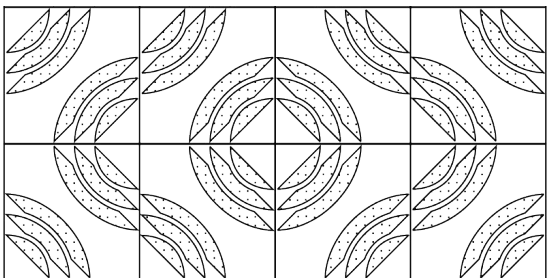


↖ left



right ↗

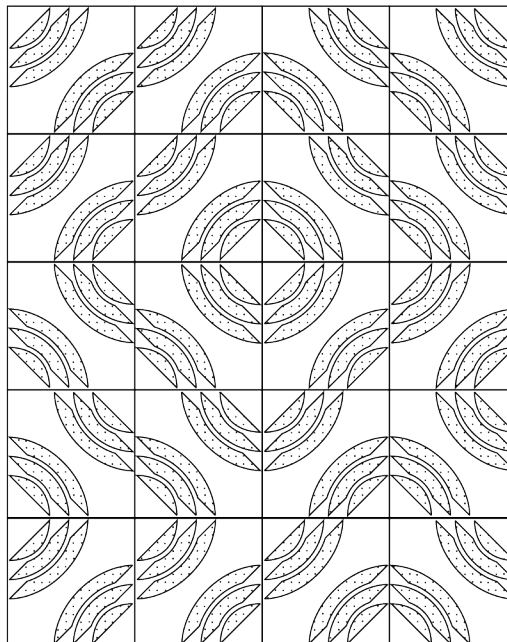
tile alignment



straight

tile placement

2' 8" | 0.81 m



3' 4"
1.01 m

2.67 x 3.33 feet = 8.9 square feet

0.81 x 1.01 meters = 0.82 square meters

to view more products and styles, visit
aimeewilder.com

to place an order, email
info@aimeewilder.com

aimee wilder

mamba

petals and stems in mango swan



what to order

Mamba in Mango Swan

Cement tile minimum: 15 boxes of 12 tiles
= 180 tiles

Ceramic tile minimum: 6 boxes of 20 tiles
= 120 tiles

We recommend a 20% overage on all tile orders.

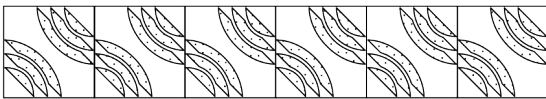
info and design consultation

Please visit the tile info section on our website for more details on specs, testing, installation, and commercial orders. We are happy to help calculate quantities plus necessary overage and to assist you in your customized tile layout. Please email info@aimeewilder.com.

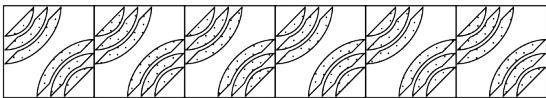
layout

For this pattern, start by making a single Petal with 16 tiles, according to the instructions for the Petals pattern. When this Petal is complete, form the Stems with tiles pointing all in the same direction, up left.

tile directions

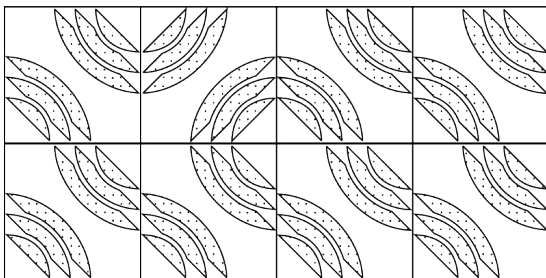


↖ left



right ↗

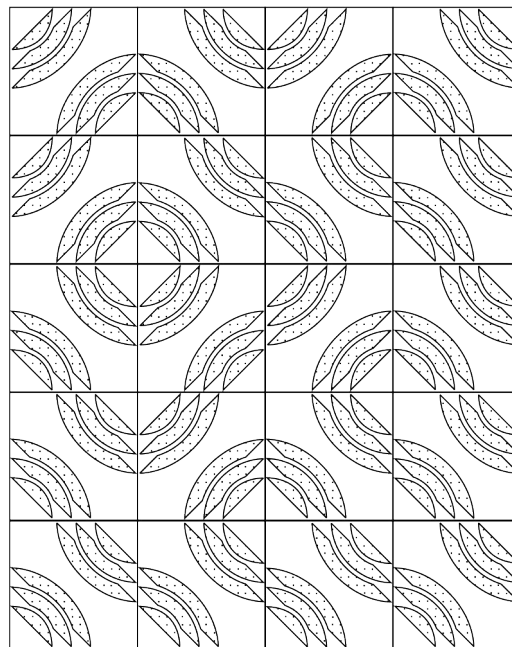
tile alignment



straight

tile placement

2' 8" | 0.81 m



3' 4"

1.01 m

2.67 x 3.33 feet = 8.9 square feet

0.81 x 1.01 meters = 0.82 square meters

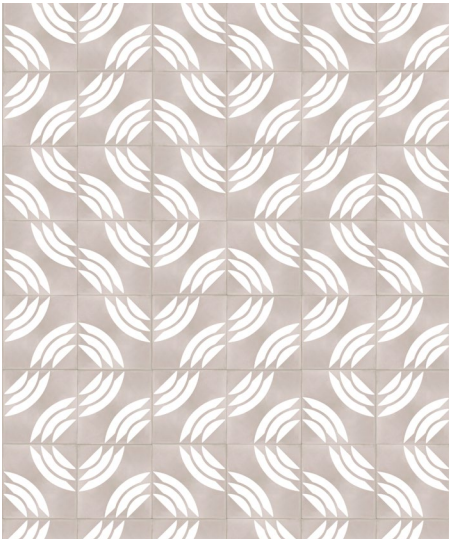
to view more products and styles, visit
aimeewilder.com

to place an order, email
info@aimeewilder.com

aimee wilder

mamba

maze in pearl swan



what to order

Mamba in Pearl Swan

Cement tile minimum: 15 boxes of 12 tiles
= 180 tiles

Ceramic tile minimum: 6 boxes of 20 tiles
= 120 tiles

We recommend a 20% overage on all tile orders.

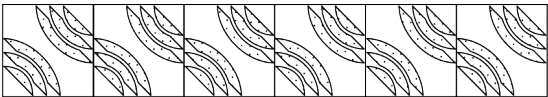
info and design consultation

Please visit the tile info section on our website for more details on specs, testing, installation, and commercial orders. We are happy to help calculate quantities plus necessary overage and to assist you in your customized tile layout. Please email info@aimeewilder.com.

layout

For this completely customizable winding pattern, please review each tile in the diagram below to determine the direction of each tile.

tile directions

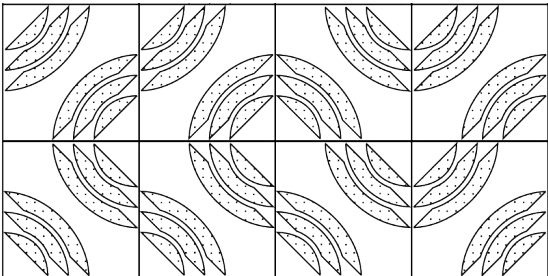


left ↶



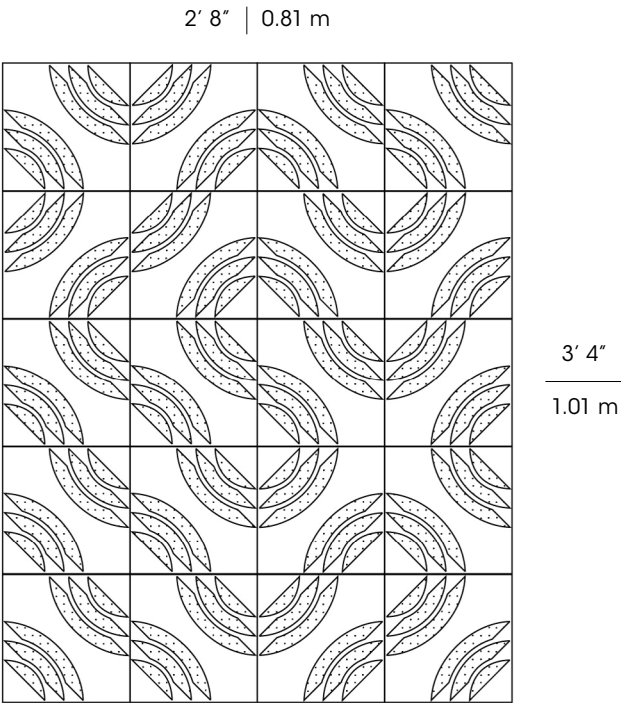
right ↷

tile alignment



straight

tile placement



2.67 x 3.33 feet = 8.9 square feet

0.81 x 1.01 meters = 0.82 square meters

to view more products and styles, visit aimeewilder.com

to place an order, email info@aimeewilder.com

aimee wilder