



OLD GLAZE COLLECTION

CHARACTERISTICS:

For a high-sheen vintage look, Old Glaze is the perfect choice. With a subtle marbled finish, it is a toned-down interpretation of antique leathers. The luminous topcoat provides extra protection, making it suitable for virtually any type of application.

SPECIFICATIONS:

Average Hide Size:	45 square feet
Average Thickness:	1.0 - 1.1 mm
Finish:	High sheen aniline-dyed
Grain Character:	Distressed
Grain:	Half Grain
Flammability Testing:	CA-117, NFPA-260

COLORWAYS:



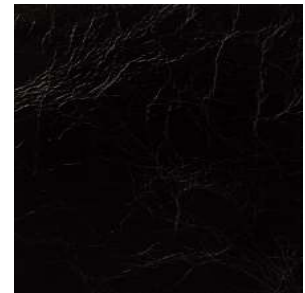
Smokey Taupe



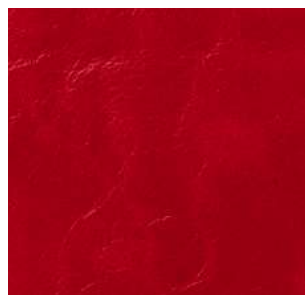
Java



Elephant Grey



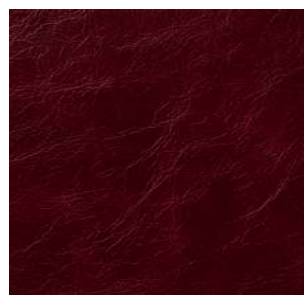
Nero



Poppy



Castagna



Claret



Night Sky



OLD GLAZE COLLECTION

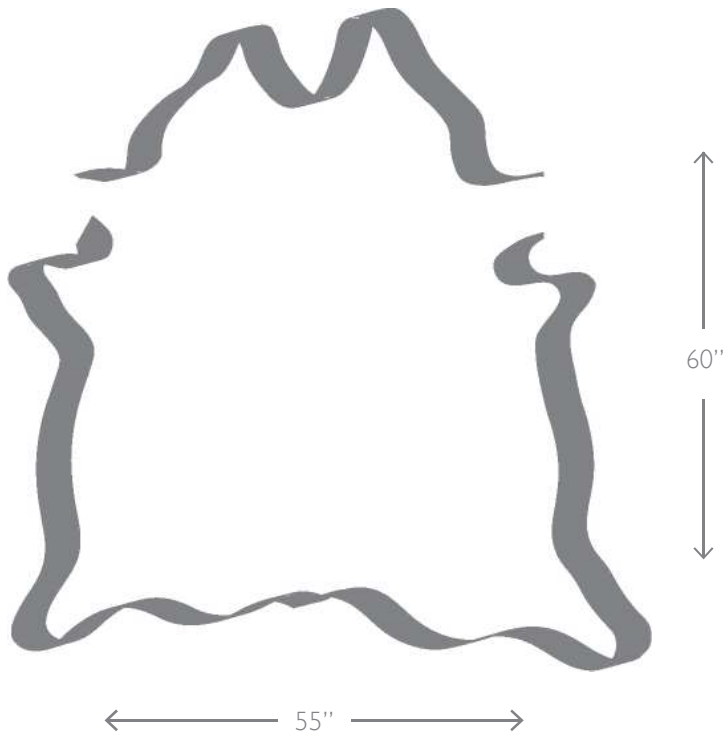
CARE & CLEANING:

Semi-aniline leathers are simple to maintain. Dust regularly or vacuum with a soft bristle attachment.

Spilled liquids should be removed immediately by dabbing with a cloth (do not rub). If additional cleaning is required, apply soapy water with a damp cloth and then rinse by wiping down with clear water. Do not use commercial cleaning agents. For difficult stains, it is always best to contact a specialist as damage may occur due to improper cleaning.

For optimum performance and longevity, do not place your leather furniture within twelve inches of a heating source or in sustained direct sunlight.

HIDE DIAGRAM:



A NOTE ON SEMI-ANILINE LEATHERS:

Semi-aniline leather is ideal for contract and residential use, as it is washable with soap and water, extra free of defects, and expertly selected for maximum yield.

To determine the most appropriate leather for your unique application please call us at 212.736.3360. We love to talk about leather!