



MILAN COLLECTION

CHARACTERISTICS:

Inspired by sought-after Italian accessory leather and created using the same state-of-the-art techniques, Milan has a sleek modern look. Produced on European half-hides, its surface is lightly buffed and then finished with lustrous resins and pigments to create a soft, waxy feel. Well-protected and elegant, this leather is a winner.

SPECIFICATIONS:

Average Hide Size:	22 square feet
Average Thickness:	1.0 -1.2 mm
Finish:	Semi-aniline
Grain Character:	Smooth
Grain:	Full grain
Flammability Testing:	CA-117, NFPA-260

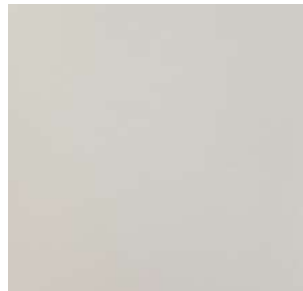
COLORWAYS:



White



Off-White



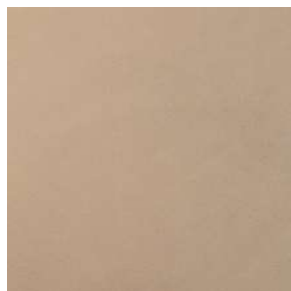
Frost



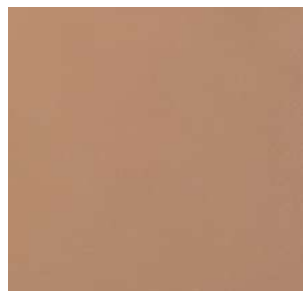
Fleece



Scallop



Shiitake



Cappucino



Rock



MILAN COLLECTION

COLORWAYS:



Earth



Elk



Seaweed



Tobacco



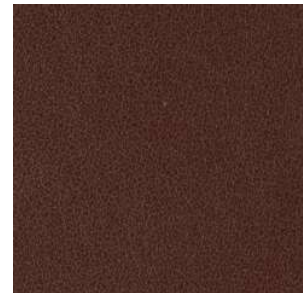
Hereford



Woody



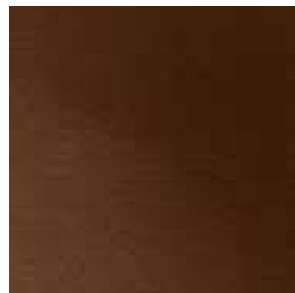
Canyon



Sequoia



Yeti



Canyon



Date



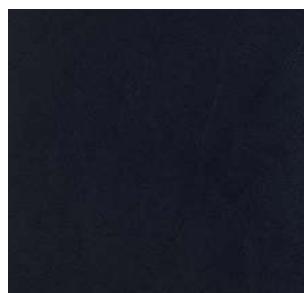
Ebony



Black



Deep



Flag



Shark



MILAN COLLECTION

COLORWAYS:



Cook



Schist



Tundra



Dove



Graphite



Azure



Arctic



Santorini



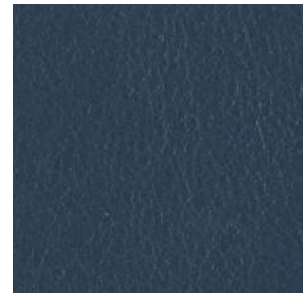
Aquatic



Aztec



Denim



Jeans



Pop Bottle



Sea



Pixie



Serpentine



MILAN COLLECTION

COLORWAYS:



Catfish



Loden



Chive



Anise



Lime



Soleil



Apricot



Maize



Clementine



Mango



Masai



Parrot



Scarlet



Santa Claus



Passion



MILAN COLLECTION

COLORWAYS:



Blush Pink



Rosa



Kiss



Barbie



Violet



Mauve



Bordeaux



Liz



Laser



Vino



Brown Rose



Crimson



Phonebox



Jaspar



MILAN COLLECTION

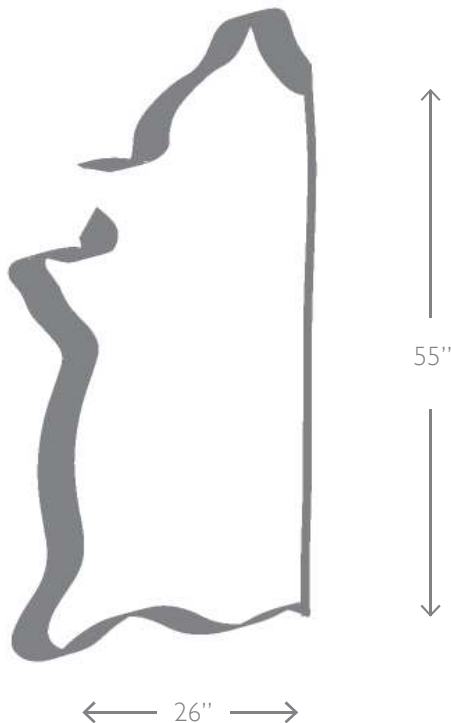
CARE & CLEANING:

Semi-aniline leathers are simple to maintain. Dust regularly or vacuum with a soft bristle attachment.

Spilled liquids should be removed immediately by dabbing with a cloth (do not rub). If additional cleaning is required, apply soapy water with a damp cloth and then rinse by wiping down with clear water. Do not use commercial cleaning agents. For difficult stains, it is always best to contact a specialist as damage may occur due to improper cleaning.

For optimum performance and longevity, do not place your leather furniture within twelve inches of a heating source or in sustained direct sunlight.

HIDE DIAGRAM:



A NOTE ON SEMI-ANILINE LEATHERS:

Semi-aniline leather is ideal for contract and residential use, as it is washable with soap and water, extra free of defects, and expertly selected for maximum yield.

To determine the most appropriate leather for your unique application please call us at 212.736.3360. We love to talk about leather!