



# LACAR NAPA COLLECTION

## CHARACTERISTICS:

Due to its tough semi-aniline topcoat, Lacar Napa has been the go-to leather for demanding high traffic applications for over forty years. A top performance leather, it has a pleasing soft hand and smooth, elegant look.

---

## SPECIFICATIONS:

Average Hide Size:	55 square feet
Average Thickness:	0.9 -1.1 mm
Finish:	Matte semi-aniline
Grain Character:	Smooth
Grain:	Half Grain
Flammability Testing:	CA-117, NFPA-260

---

## COLORWAYS:



Snowball



Ghiaccio



Latte



Shell



Mascarpone



Beige



Caffe'latte



Smoke



# LACAR NAPA COLLECTION

COLORWAYS:



Chalk



Marmo



Earth



Grey Pearl



Grey



Hanoi



Stone



Tortora



Thyme



Siena



New Cognac



Lumber



Hazelnut



Marrone



Baked Beans



Brazil



# LACAR NAPA COLLECTION

COLORWAYS:



Burgundy



Muscat



Cigar



Cubano



Mogano



Mud



Nero



Anthracite



Granite



Tarmac



Inox



Frozen



Cinder



Cielo



Electro



Blue



# LACAR NAPA COLLECTION

## COLORWAYS:



Azure



Notte



Midnight



Aquamarina



Mascara



Down



Lotus



Cilantro



Foresta



Pine



Verdant



Green



Crema



Sour



Moutarde



Spicy Brown



# LACAR NAPA COLLECTION

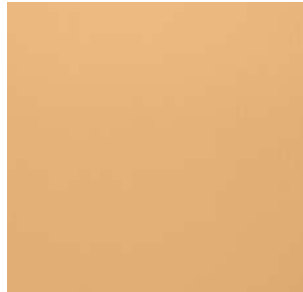
## COLORWAYS:



Leche



Wheat



Light Tan



Chips



Miel



Arancio



Begonia



All Spice



Rosso



Sangre



Antique Red



Amaranto



Cerise



Bordeaux



Antique Rose



Shadow



# LACAR NAPA COLLECTION

COLORWAYS:



Lilac



Violet



Iris



## LACAR NAPA COLLECTION

### CARE & CLEANING:

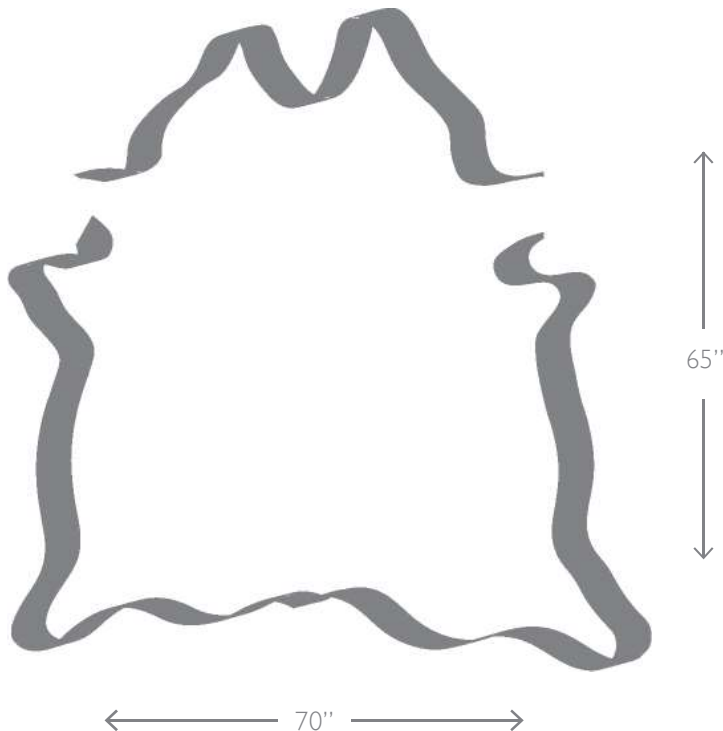
Semi-aniline leathers are simple to maintain. Dust regularly or vacuum with a soft bristle attachment.

Spilled liquids should be removed immediately by dabbing with a cloth (do not rub). If additional cleaning is required, apply soapy water with a damp cloth and then rinse by wiping down with clear water. Do not use commercial cleaning agents. For difficult stains, it is always best to contact a specialist as damage may occur due to improper cleaning.

For optimum performance and longevity, do not place your leather furniture within twelve inches of a heating source or in sustained direct sunlight.

---

### HIDE DIAGRAM:



#### A NOTE ON SEMI-ANILINE LEATHERS:

Semi-aniline leather is ideal for contract and residential use, as it is washable with soap and water, extra free of defects, and expertly selected for maximum yield.

To determine the most appropriate leather for your unique application please call us at 212.736.3360. We love to talk about leather!