



HORSEHAIR FABRIC COLLECTION

CHARACTERISTICS:

Horsehair fabric is widely recognized for its luster, durability, and ease of care. Horsehair, sourced from the tails of live horses, is used for the weft and a poly-cotton blend is used for the warp. Inherent variation in the hair's color and thickness lends interest to the fabric.

SPECIFICATIONS:

Width:	25"
Repeat:	Varies
Content:	72% horsehair, 28% poly-cotton blend
Use:	Upholstery, walls, cabinetry
Cleaning:	Dust regularly

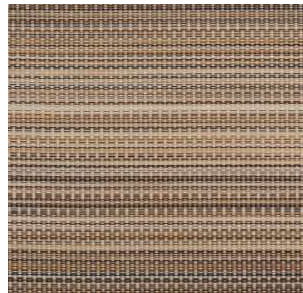
COLORWAYS:



NO-33



NO-18



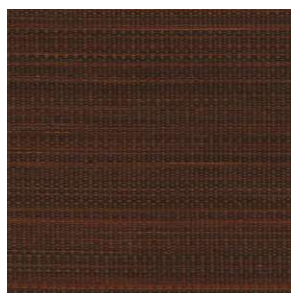
NO-11



T-62



NO-2



NO-2A



NO-29X

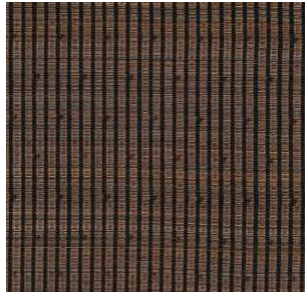


T-31

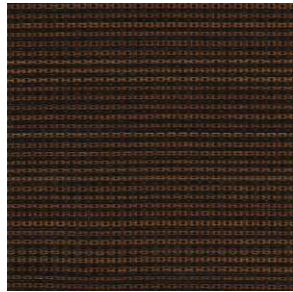


HORSEHAIR FABRIC COLLECTION

COLORWAYS:



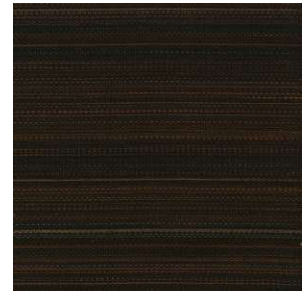
T-26A



T-202



NO-27



WT81XT



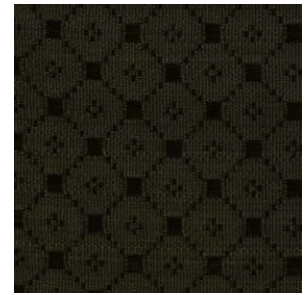
NO-37



T-85



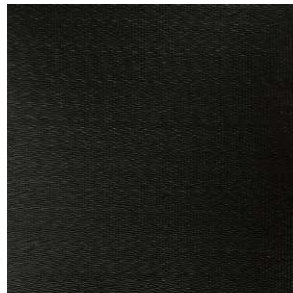
T-76



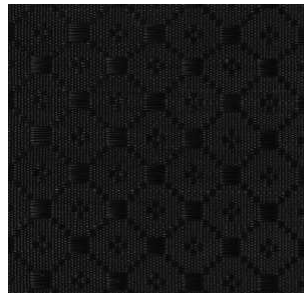
T-48



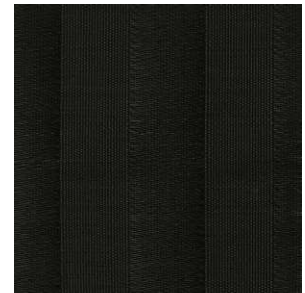
NO-30



WT-80



T-17



T-84



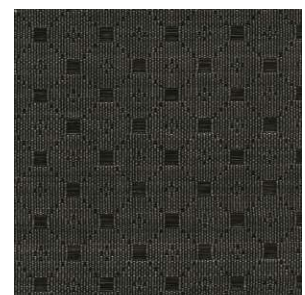
WT-82X



T-18



NO-24

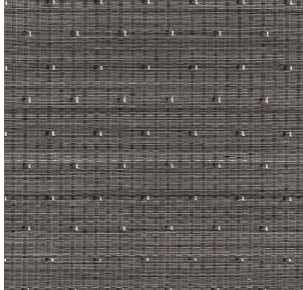


T-17G



HORSEHAIR FABRIC COLLECTION

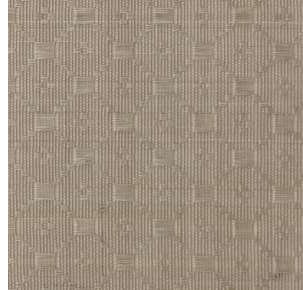
COLORWAYS:



T-07



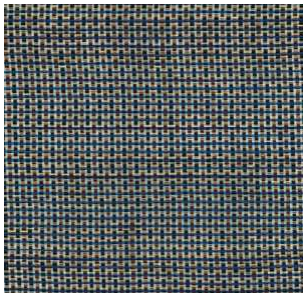
T-62RX



T-17BE



NO-8



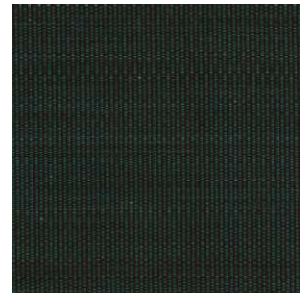
T-205



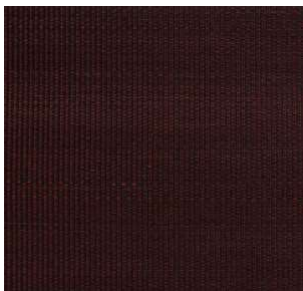
NO-51



T-78A



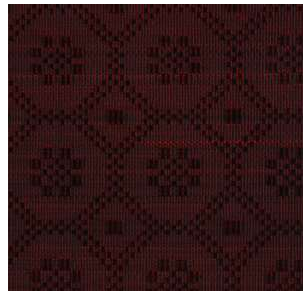
NO-36



NO-20



T-33



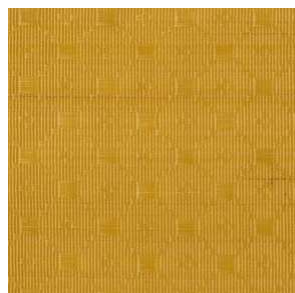
T-78



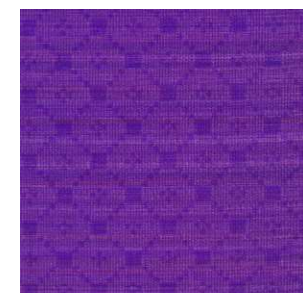
T-78R



NO-21



WT80Y



T-44