



FORTE COLLECTION

CHARACTERISTICS:

In a class by itself, Forte is luxuriously smooth and lustrous. A special vacuuming-drying process results in its unusually smooth grain and firm hand. Its transparent topcoat is reminiscent of classic French-polished leather.

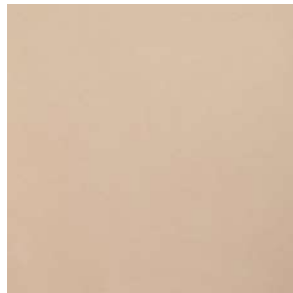
SPECIFICATIONS:

Average Hide Size:	65 square feet
Average Thickness:	1.1-1.2 mm
Finish:	Ultra smooth aniline dyed
Grain Character:	Smooth
Grain:	Full grain
Flammability Testing:	CA-117, NFPA-260

COLORWAYS:



Ivory



Mortar



Vanilla



Grecian



Pebble



Greyhound



Gravel



Palm



FORTE COLLECTION

COLORWAYS:



Sol



Miel



Mesa



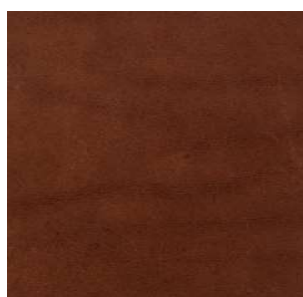
Fern



Oak



Almond



Root



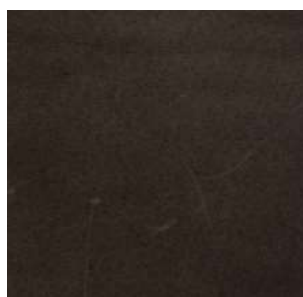
Maple



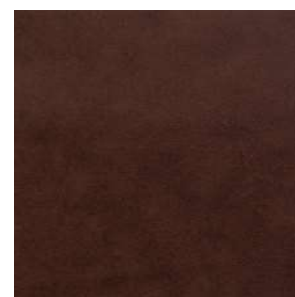
Roast



Truffle



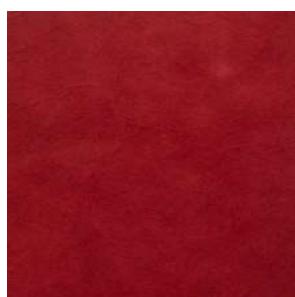
Flint



Hickory



Wine



Garnet



Orchid



Citron



FORTE COLLECTION

COLORWAYS:



Chrome



Greystone



Stone



Black



Navy



Sapphire



Mediterranean



Emerald



Hemlock



Grass



Jade



FORTE COLLECTION

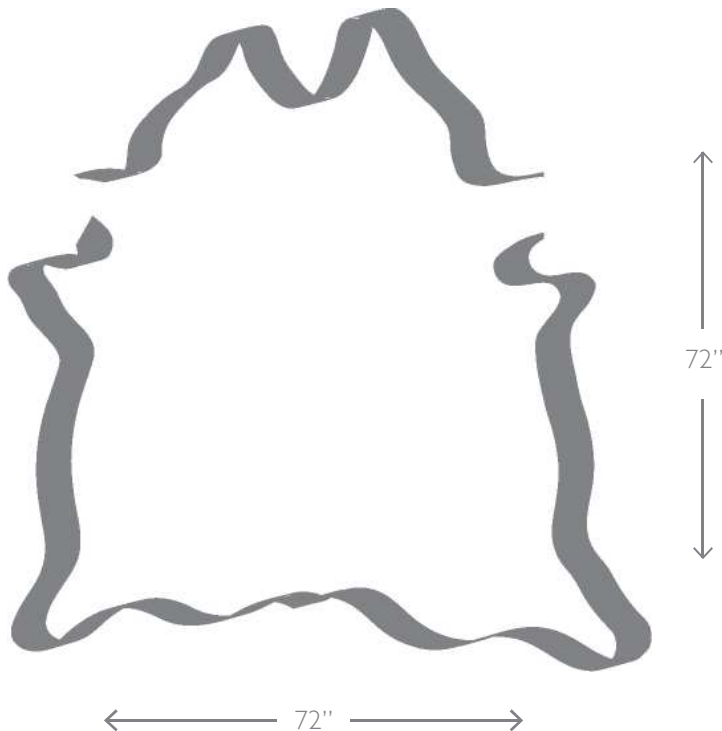
CARE & CLEANING:

Leather is a luxurious, durable material that will maintain its beauty for many years with proper care. Aniline leathers are tanned and dyed without added finishes or protection and develop a beautiful patina with use.

Dormia should be dusted regularly with a soft cloth or vacuumed with a soft bristle attachment. Remove spilled liquids by dabbing with a clean cloth (do not rub). For difficult stains, it is always best to contact a specialist as damage may occur due to improper cleaning.

For optimum performance and longevity, do not place your leather furniture within twelve inches of a heating source or in sustained direct sunlight.

HIDE DIAGRAM:



A NOTE ON ANILINE LEATHERS:

Full aniline leathers display all of the natural beauty of the hide, including neck wrinkles, stretch marks, spines, insect bites, and scars. As with stained natural hardwoods, leather shows shading variation in and between hides. These characteristics are part of the leather's beauty and are not considered defects.

To determine the most appropriate leather for your unique application please call us at 212.736.3360. We love to talk about leather!