



# ASPEN COLLECTION

## CHARACTERISTICS:

Aspen is for true leather connoisseurs. Only the finest European hides are selected to create this classic aniline leather. Each hide is vacuum-dried to create a buttery smooth surface, then finished with a light wax for a silky hand and sophisticated look.

---

## SPECIFICATIONS:

Average Hide Size:	55 square feet
Average Thickness:	1.0 -1.2 mm
Finish:	Aniline-dyed, waxed
Grain Character:	Smooth
Grain:	Full grain
Flammability Testing:	CA-117, NFPA-260

---

## COLORWAYS:



Cloud Grey



Khaki



Driftwood



Sand Dune



Burlap



Marsh



Tar



Ebony



# ASPEN COLLECTION

## COLORWAYS:



Olive



Eclipse



Midnight



Lagoon



Indigo



Eggplant



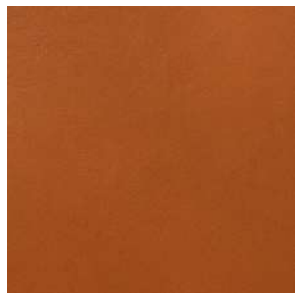
Cranberry



Tomato



Truffle



Cork



Straw



## ASPEN COLLECTION

### CARE & CLEANING:

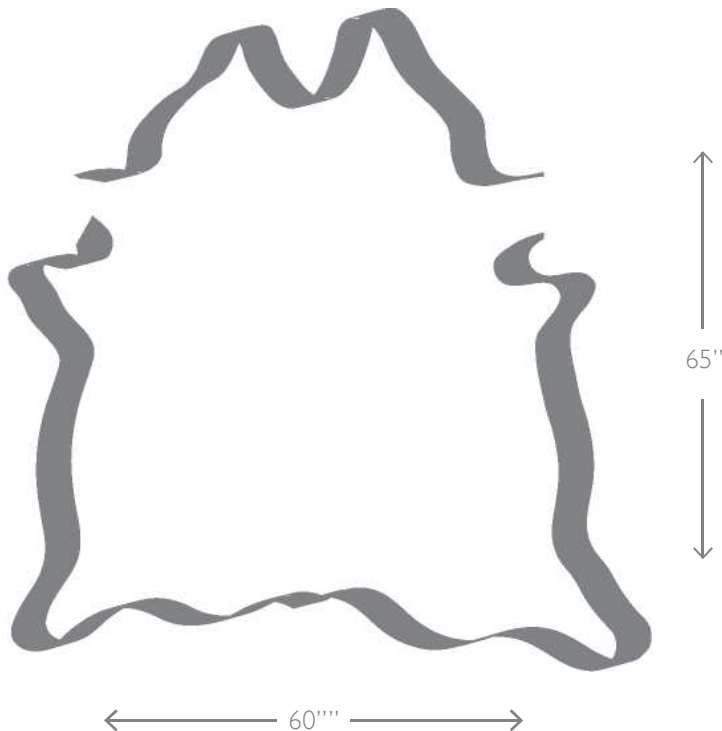
Leather is a luxurious, durable material that will maintain its beauty for many years with proper care. Aniline leathers are tanned and dyed without added finishes or protection and develop a beautiful patina with use.

Dormia should be dusted regularly with a soft cloth or vacuumed with a soft bristle attachment. Remove spilled liquids by dabbing with a clean cloth (do not rub). For difficult stains, it is always best to contact a specialist as damage may occur due to improper cleaning.

For optimum performance and longevity, do not place your leather furniture within twelve inches of a heating source or in sustained direct sunlight.

---

### HIDE DIAGRAM:



#### A NOTE ON ANILINE LEATHERS:

Full aniline leathers display all of the natural beauty of the hide, including neck wrinkles, stretch marks, spines, insect bites, and scars. As with stained natural hardwoods, leather shows shading variation in and between hides. These characteristics are part of the leather's beauty and are not considered defects.

To determine the most appropriate leather for your unique application please call us at 212.736.3360. We love to talk about leather!