

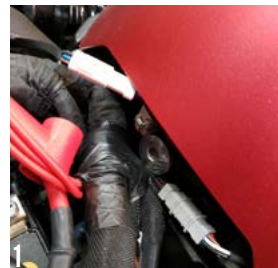
# NEW RAGE CYCLES

## INSTALLATION INSTRUCTIONS

### INDIAN BOBBER SCOUT

#### FENDER ELIMINATOR

- 1 Remove seat and unplug grey and white connectors (Photo 1)
- 2 Remove fender struts with a 6mm allen key (Photo 2)
- 3 Behind left strut, unplug plate light connector (Photo 3)
- 4 Remove stock turn signals from struts using a 5mm allen key (Photo 4)

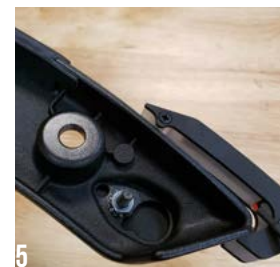


# NEW RAGE CYCLES

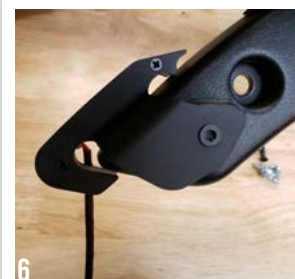
## INSTALLATION INSTRUCTIONS

### FENDER ELIMINATOR

- 5 Install new turn signals using provided 10-32 bolts and nuts using a T25 Torx (Photo 5 and 6)



- 6 Reinstall fender struts



- 7 Plug in plate light connector and run harnesses back to factory location under seat and plug in