



### CB-D8 Lemon TrainWreck

Sample ID: G1C0156-02

Matrix: Industrial Hemp

Test ID: 5015267

Source ID:

Date Sampled: 6/02/2023

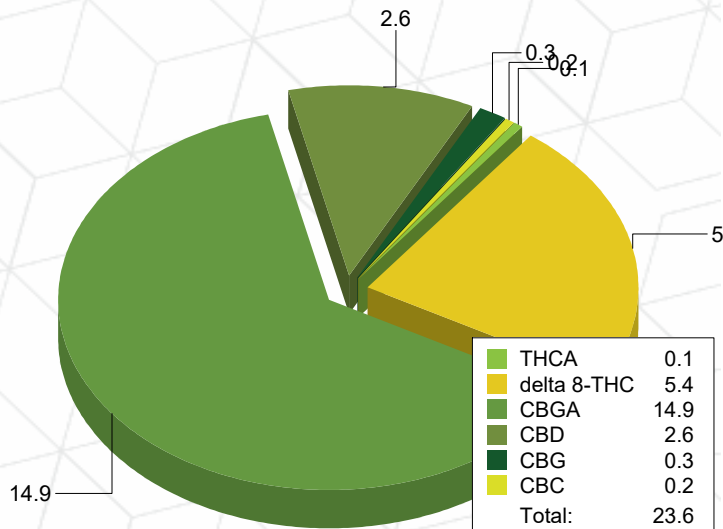
Date Accepted: 06/02/2023

## Potency Analysis

Date/Time Extracted: 06/04/2023 14:30

Analysis Method/SOP: 215

Cannabinoids	LOQ (%)	% by Wt.	mg/g	Cannabinoids Profile
Total THC	0.009080	0.1126	1.126	
Total CBD	0.002075	2.631	26.31	
Total CBG	0.003160	13.44	134.4	
THCA	0.002920	0.1284	1.284	
delta 9-THC	0.009080	< LOQ	< LOQ	
delta 8-THC	0.01796	5.389	53.89	
THCV	0.005055	< LOQ	< LOQ	
THCVA	0.001885	< LOQ	< LOQ	
CBD	0.001555	2.631	26.31	
CBDA	0.002075	< LOQ	< LOQ	
CBDV	0.005000	< LOQ	< LOQ	
CBDVA	0.001640	< LOQ	< LOQ	
CBN	0.002990	< LOQ	< LOQ	
CBG	0.003160	0.3369	3.369	
CBGA	0.003160	14.93	149.3	
CBC	0.008965	0.1601	1.601	



Total THC = delta 9-THC + (THCA \* 0.877)

Total CBD = CBD + (CBDA \* 0.877)

Total CBG = CBG + (CBGA \* 0.878)

LOQ=Limit of Quantification, the lowest measurable concentration of an analyte.



ISO 17025  
ACCREDITED  
LABORATORY

*Russell Kuhfeld*

Russell Kuhfeld  
Quality Officer - 3/11/2023

All QC samples met acceptance criteria of the method; data available upon request. These results relate only to the sample included on this report. The report may not be reproduced except in full, without the written permission of Green Leaf Lab.

This is for informational testing and is not compliance testing. Lab results apply to the sample as received.