



CB-D8 HEADBAND

Sample ID: G0J0747-01

Matrix: Industrial Hemp

Test ID: 5007101

Source ID:

Date Sampled: 10/30/23

Date Accepted: 10/30/23

Potency Analysis

Date/Time Extracted: 11/02/23 14:10

Analysis Method/SOP: 215

Batch Identification: 2045014

Cannabinoids	LOQ (%)	% by Wt.	mg/g	Cannabinoids Profile																
Total THC	0.009080	0.2266	2.266	<table border="1"> <tr><td>THCA</td><td>0.3</td></tr> <tr><td>delta 8-THC</td><td>12.1</td></tr> <tr><td>CBDA</td><td>10.1</td></tr> <tr><td>CBD</td><td>1.6</td></tr> <tr><td>CBC</td><td>0.1</td></tr> <tr><td>CBC</td><td>0.5</td></tr> <tr><td>CBDVA</td><td>0.1</td></tr> <tr><td>Total:</td><td>24.7</td></tr> </table>	THCA	0.3	delta 8-THC	12.1	CBDA	10.1	CBD	1.6	CBC	0.1	CBC	0.5	CBDVA	0.1	Total:	24.7
THCA	0.3																			
delta 8-THC	12.1																			
CBDA	10.1																			
CBD	1.6																			
CBC	0.1																			
CBC	0.5																			
CBDVA	0.1																			
Total:	24.7																			
Total CBD	0.008300	10.51	105.1																	
Total CBG	7.900E-4	0.07463	0.7463																	
THCA	0.002920	0.2584	2.584																	
delta 9-THC	0.009080	< LOQ	< LOQ																	
delta 8-THC	0.004490	12.06	120.6																	
THCV	0.005055	< LOQ	< LOQ																	
THCVA	0.001885	< LOQ	< LOQ																	
CBD	0.006220	1.640	16.4																	
CBDA	0.008300	10.11	101.1																	
CBDV	0.005000	< LOQ	< LOQ																	
CBDVA	0.001640	0.09214	0.9214																	
CBN	0.002990	< LOQ	< LOQ																	
CBG	7.900E-4	0.07463	0.7463																	
CBGA	7.900E-4	< LOQ	< LOQ																	
CBC	0.008965	0.4690	4.69																	

Total THC = delta 9-THC + (THCA * 0.877)

Total CBD = CBD + (CBDA * 0.877)

Total CBG = CBG + (CBGA * 0.878)

LOQ=Limit of Quantification, the lowest measurable concentration of an analyte.



Russell Kuhfeld

Russell Kuhfeld Quality
Officer - 11/6/2023

All QC samples met acceptance criteria of the method; data available upon request. These results relate only to the sample included on this report. The report may not be reproduced except in full, without the written permission of Green Leaf Lab. This is for informational testing and is not compliance testing. Lab results apply to the sample as received.



CB-D8 RASPBERRY

Sample ID: G0J0747-01

Matrix: Industrial Hemp

Test ID: 5007101

Source ID:

Date Sampled: 10/30/23

Date Accepted: 10/30/23

Potency Analysis

Date/Time Extracted: 11/02/23 14:10

Analysis Method/SOP: 215

Batch Identification: 2045014

Cannabinoids	LOQ (%)	% by Wt.	mg/g	Cannabinoids Profile
Total THC	0.009080	0.2266	2.266	
Total CBD	0.008300	10.51	105.1	
Total CBG	7.900E-4	0.07463	0.7463	
THCA	0.002920	0.2584	2.584	
delta 9-THC	0.009080	< LOQ	< LOQ	
delta 8-THC	0.004490	12.06	120.6	
THCV	0.005055	< LOQ	< LOQ	
THCVA	0.001885	< LOQ	< LOQ	
CBD	0.006220	1.640	16.4	
CBDA	0.008300	10.11	101.1	
CBDV	0.005000	< LOQ	< LOQ	
CBDVA	0.001640	0.09214	0.9214	
CBN	0.002990	< LOQ	< LOQ	
CBG	7.900E-4	0.07463	0.7463	
CBGA	7.900E-4	< LOQ	< LOQ	
CBC	0.008965	0.4690	4.69	

Total THC = delta 9-THC + (THCA * 0.877)

Total CBD = CBD + (CBDA * 0.877)

Total CBG = CBG + (CBGA * 0.878)

LOQ=Limit of Quantification, the lowest measurable concentration of an analyte.



Russell Kuhfeld

Russell Kuhfeld Quality
Officer - 11/6/2023

All QC samples met acceptance criteria of the method; data available upon request. These results relate only to the sample included on this report. The report may not be reproduced except in full, without the written permission of Green Leaf Lab. This is for informational testing and is not compliance testing. Lab results apply to the sample as received.



LC074 Watermelon Skittles D8

Sample ID: G1A0182-01

Matrix: Industrial Hemp

Test ID: 5013492

Source ID:

Date Sampled: 01/13/23

Date Accepted: 01/13/23

Potency Analysis

Date/Time Extracted: 01/14/23 08:57

Analysis Method/SOP: 215

Batch Identification: 2103034

	LOQ (%)	% by Wt.	mg/g	Cannabinoids Profile	
Total THC	0.010	0.26	2.6		
Total CBD	0.009	12	120		
Total CBG	0.0008	1.7	17		
THCA	0.003	0.30	3		
delta 9-THC	0.010	< LOQ	< LOQ		
delta 8-THC	0.019	14	140		
THCV	0.005	< LOQ	< LOQ		
THCVA	0.002	< LOQ	< LOQ		
CBD	0.007	2.8	28		
CBDA	0.009	10	100		
CBDV	0.005	< LOQ	< LOQ		
CBDVA	0.002	0.13	1.3		
CBN	0.003	< LOQ	< LOQ		
CBG	0.0008	0.11	1.1		
CBGA	0.0008	1.9	19		
CBC	0.009	0.19	1.9		

Water Activity

Date/Time Extracted: 01/14/23 16:03

Analysis Method/SOP: 102

Water Activity: 0.43 at 24°C

Action Level: 0.65

Moisture

Date/Time Extracted: 01/15/23

Analysis Method/SOP: 103

15:00 Moisture: 5.11 %

Action Level: 15%

Potency results are reported on a dry weight basis.

Total THC = delta 9-THC + (THCA * 0.877)

Total CBD = CBD + (CBDA * 0.877)

Total CBG = CBG + (CBGA * 0.878)

LOQ=Limit of Quantification, the lowest measurable concentration of an analyte.



ISO 17025
ACCREDITED
LABORATORY

Eric Wendt
Chief Science Officer - 1/17/2023

All QC samples met acceptance criteria of the method; data available upon request. These results relate only to the sample included on this report. The report may not be reproduced except in full, without the written permission of Green Leaf Lab.

This is for informational testing and is not compliance testing. Lab results apply to the sample as received.



CB-D8 WEDDING CAKE

Sample ID: G0J0747-01

Matrix: Industrial Hemp

Test ID: 5007101

Source ID:

Date Accepted: 10/30/23

Date Sampled: 10/30/23

Potency Analysis

Date/Time Extracted: 11/02/23 14:10

Analysis Method/SOP: 215

Batch Identification: 2045014

Cannabinoids	LOQ (%)	% by Wt.	mg/g	Cannabinoids Profile																
Total THC	0.009080	0.2266	2.266	<table border="1"> <tr><td>THCA</td><td>0.3</td></tr> <tr><td>delta 8-THC</td><td>12.1</td></tr> <tr><td>CBDA</td><td>10.1</td></tr> <tr><td>CBD</td><td>1.6</td></tr> <tr><td>CBC</td><td>0.1</td></tr> <tr><td>CBC</td><td>0.5</td></tr> <tr><td>CBDVA</td><td>0.1</td></tr> <tr><td>Total:</td><td>24.7</td></tr> </table>	THCA	0.3	delta 8-THC	12.1	CBDA	10.1	CBD	1.6	CBC	0.1	CBC	0.5	CBDVA	0.1	Total:	24.7
THCA	0.3																			
delta 8-THC	12.1																			
CBDA	10.1																			
CBD	1.6																			
CBC	0.1																			
CBC	0.5																			
CBDVA	0.1																			
Total:	24.7																			
Total CBD	0.008300	10.51	105.1																	
Total CBG	7.900E-4	0.07463	0.7463																	
THCA	0.002920	0.2584	2.584																	
delta 9-THC	0.009080	< LOQ	< LOQ																	
delta 8-THC	0.004490	12.06	120.6																	
THCV	0.005055	< LOQ	< LOQ																	
THCVA	0.001885	< LOQ	< LOQ																	
CBD	0.006220	1.640	16.4																	
CBDA	0.008300	10.11	101.1																	
CBDV	0.005000	< LOQ	< LOQ																	
CBDVA	0.001640	0.09214	0.9214																	
CBN	0.002990	< LOQ	< LOQ																	
CBG	7.900E-4	0.07463	0.7463																	
CBGA	7.900E-4	< LOQ	< LOQ																	
CBC	0.008965	0.4690	4.69																	

Total THC = delta 9-THC + (THCA * 0.877)

Total CBD = CBD + (CBDA * 0.877)

Total CBG = CBG + (CBGA * 0.878)

LOQ=Limit of Quantification, the lowest measurable concentration of an analyte.



Russell Kuhfeld

Russell Kuhfeld Quality
Officer - 11/6/2023

All QC samples met acceptance criteria of the method; data available upon request. These results relate only to the sample included on this report. The report may not be reproduced except in full, without the written permission of Green Leaf Lab.

This is for informational testing and is not compliance testing. Lab results apply to the sample as received.



CB-D8 Pineapple Express

Sample ID: G1C0156-02

Matrix: Industrial Hemp

Test ID: 5015267

Source ID:

Date Sampled: 03/06/23

Date Accepted: 03/06/23

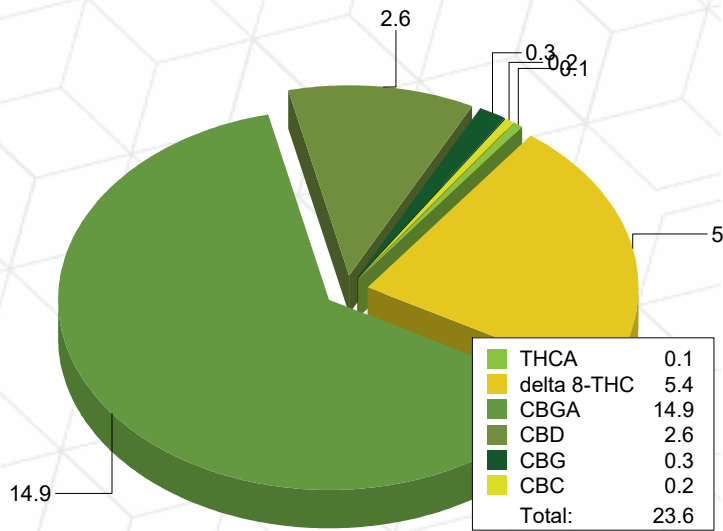
Potency Analysis

Date/Time Extracted: 03/08/23 14:30

Analysis Method/SOP: 215

Batch Identification: 2111010

Cannabinoids	LOQ (%)	% by Wt.	mg/g	Cannabinoids Profile
Total THC	0.009080	0.1126	1.126	
Total CBD	0.002075	2.631	26.31	
Total CBG	0.003160	13.44	134.4	
THCA	0.002920	0.1284	1.284	
delta 9-THC	0.009080	< LOQ	< LOQ	
delta 8-THC	0.01796	5.389	53.89	
THCV	0.005055	< LOQ	< LOQ	
THCVA	0.001885	< LOQ	< LOQ	
CBD	0.001555	2.631	26.31	
CBDA	0.002075	< LOQ	< LOQ	
CBDV	0.005000	< LOQ	< LOQ	
CBDVA	0.001640	< LOQ	< LOQ	
CBN	0.002990	< LOQ	< LOQ	
CBG	0.003160	0.3369	3.369	
CBGA	0.003160	14.93	149.3	
CBC	0.008965	0.1601	1.601	



Total THC = delta 9-THC + (THCA * 0.877)

Total CBD = CBD + (CBDA * 0.877)

Total CBG = CBG + (CBGA * 0.878)

LOQ=Limit of Quantification, the lowest measurable concentration of an analyte.



Russell Kuhfeld

Russell Kuhfeld
Quality Officer - 3/11/2023

All QC samples met acceptance criteria of the method; data available upon request. These results relate only to the sample included on this report. The report may not be reproduced except in full, without the written permission of Green Leaf Lab.

This is for informational testing and is not compliance testing. Lab results apply to the sample as received.



Tropicana Cookies

Sample ID: G1F0418-01

Matrix: Industrial Hemp

Test ID: 5016101

Source ID:

Date Sampled: 06/23/23

Date Accepted: 06/23/23

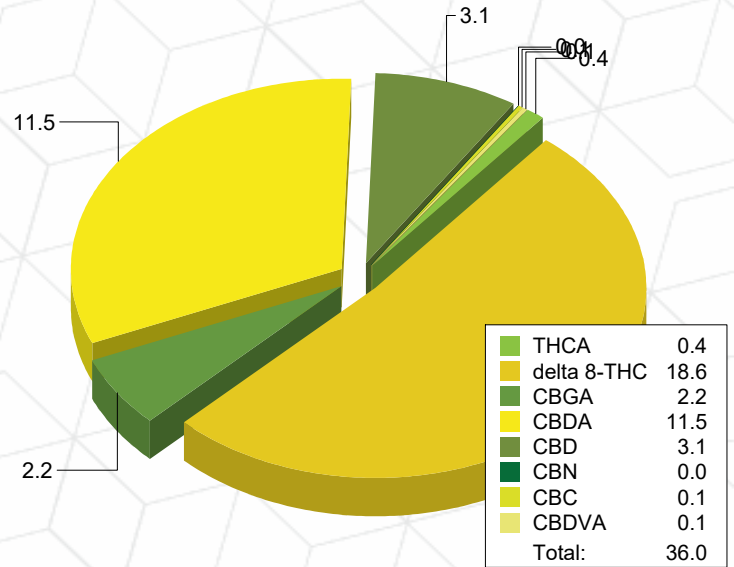
Potency Analysis

Date/Time Extracted: 06/25/23 11:33

Analysis Method/SOP: 215

Batch Identification: 2126049

Cannabinoids	LOQ (%)	% by Wt.	mg/g	Cannabinoids Profile	
Total THC	0.009080	0.3598	3.598		
Total CBD	0.008300	13.17	131.7		
Total CBG	0.003160	1.972	19.72		
THCA	0.002920	0.4103	4.103		
delta 9-THC	0.009080	< LOQ	< LOQ	11.5	
delta 8-THC	0.03592	18.58	185.8		
THCV	0.005055	< LOQ	< LOQ		
THCVA	0.001885	< LOQ	< LOQ		
CBD	0.006220	3.087	30.87		
CBDA	0.008300	11.49	114.9		
CBDV	0.005000	< LOQ	< LOQ		
CBDVA	0.001640	0.05755	0.5755		
CBN	0.002990	0.03679	0.3679	2.2	
CBG	0.003160	< LOQ	< LOQ		
CBGA	0.003160	2.246	22.46		
CBC	0.008965	0.1320	1.32		



Total THC = delta 9-THC + (THCA * 0.877)

Total CBD = CBD + (CBDA * 0.877)

Total CBG = CBG + (CBGA * 0.878)

LOQ=Limit of Quantification, the lowest measurable concentration of an analyte.



Brittany Wiemer

Brittany Wiemer
Quality Officer - 6/28/2023

These results relate only to the sample included on this report. The report may not be reproduced except in full, without the written permission of Green Leaf Lab.

This is for informational testing and is not compliance testing. Lab results apply to the sample as received.