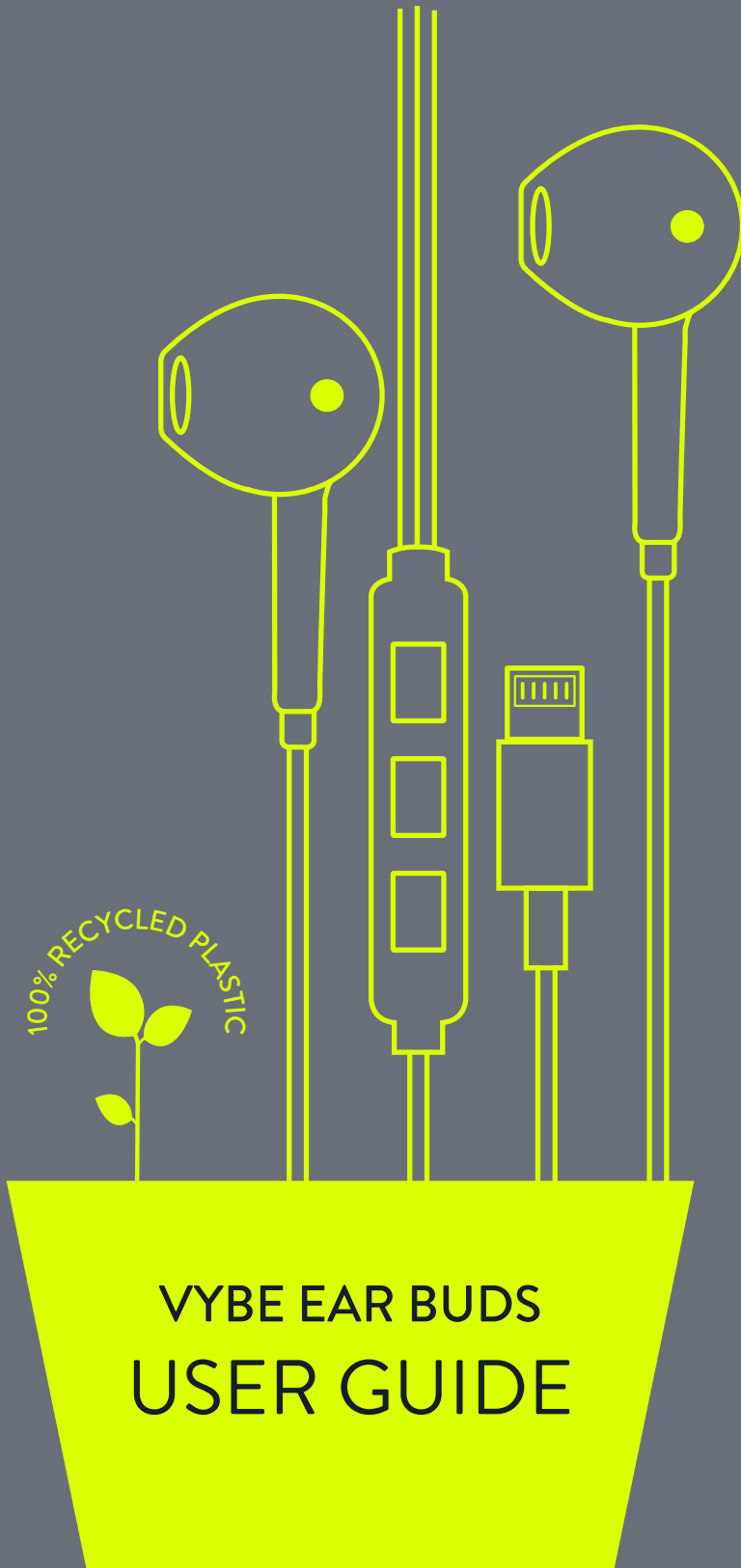


BITMORE



100% RECYCLED PLASTIC

VYBE EAR BUDS
USER GUIDE

Connecting the Vybe to your device:

1. Insert the AUX end of the Vybe into the AUX port on your device
2. Put on your favourite tracks

Note:

Take care when inserting the Vybe AUX into any port. Supervise children whilst in use.

Answer an incoming call

Briefly press the centre button to answer an incoming call.

Reject an incoming call

Press and hold the centre button for 2 seconds to reject an incoming call.

End a call

Briefly press the centre button to end a call.

Adjust the volume

Briefly press the (+) button to increase volume or press the (-) button to reduce the volume.

A beep can be heard when the volume reaches maximum or minimum volume.

Volume adjustment

During the call, long press the Volume + button to increase volume. When the volume reaches the maximum level, you will hear a beep sound.

Long press the Volume - key to reduce the volume.

Play, Pause and Skip Audio

Briefly press the centre button to either play or pause audio.

To go to the previous song, press and hold the - button for 2 seconds.

To go to the next song, press and hold + button for 2 seconds.

Redial last number

Double-click the centre button to redial the most recent outgoing telephone call from your connected Bluetooth device.

SAFETY INFORMATION:

DO NOT place any metals or metal objects (including a device case/cover that has metal components) on your device or this product whilst in use and connected to a power source. You risk potential electrical shocks, static or other more dangerous incidents such as fire or death

DO NOT leave your device connected to this product when not in use or when charging is complete

DO NOT cover this product or your device when in use

DO NOT expose this product to heat sources (including fire or direct sunlight)

DO NOT use or expose this product or your device to areas of high humidity, any liquids, gels or aerosols or heavy dust, keep it dry and clean. If this product encounters any liquid, immediately unplug the product from any connected power sources or devices

DO NOT disassemble or modify this product – this could cause risk of injury, death, or damage to property

This product must only be used and stored in an ambient environment with a temperature between 0-45 °C

Avoid dropping this product (or any other heavy impact which might damage the internal circuit)

Avoid cleaning this product using liquids or chemical substances (use a dry cloth only)

Only use attachments/accessories supplied by Bitmore or those certified by your device manufacturer

This product is not a toy, **DO NOT** leave children unsupervised with this product.

Please use a genuine certified wall adaptor, such as one that is supplied with your device manufacturer

DO NOT use a wall adaptor with a fast charge or high AMP output

DO NOT leave your device unattended for charging overnight

DO NOT use faulty, damaged or none certified (by your device manufacturer) plugs to charge or discharge your devices

DO NOT use a plug with more than a 5W output

DO NOT operate this product where aerosols are or have recently been used or where oxygen is being administered

DO NOT operate in a closed environment such as a pocket, handbag, backpack, under a pillow etc

Get your 24-month Limited Guarantee and become a Bitmore member!

You must register your device via bitmore.co.uk within 30 days of purchase for the manufacturing guarantee to be valid.

Plus get a “bit more” by gaining access to exclusive product giveaways, membership rewards and discounts!

Subject to applicable law, parent company Bitmore Limited (UK) and Nuwave Channel Partners BV (operating in the EU on behalf of Bitmore Limited) (hereinafter “Bitmore”⁴), sell its products (hereinafter “Product(s)”) with the intent that they are free of defects in manufacture and workmanship for 24-months from the date of original purchase, except as noted below. Bitmore warrants that its Products will be free of defects in material and workmanship under normal use and service. This guarantee extends only to consumers and does not extend to Retailers. Bitmore does not authorize anyone, including, but not limited to, retailers, the subsequent consumer purchaser of the product from a retailer or remote purchasers, to obligate Bitmore in any way beyond the terms set forth herein. This guarantee does not cover damage caused by misuse or abuse; accident; the attachment of any unauthorized accessory; alteration to the product; improper installation; unauthorized repairs or modifications; improper use of electrical/power supply; loss of power; dropped Product; malfunction or damage of an operating part from failure to provide manufacturer’s recommended maintenance; transportation damage; theft; neglect; vandalism; or environmental conditions; loss of use; or any other conditions whatsoever that are beyond the control of Bitmore.

THE GUARANTEE PROVIDED HEREIN SHALL BE THE SOLE AND EXCLUSIVE GUARANTEE. THERE SHALL BE NO OTHER WARRANTIES EXPRESS OR IMPLIED INCLUDING ANY IMPLIED GUARANTEE OF MERCHANTABILITY OR FITNESS OR ANY OTHER OBLIGATION ON THE PART OF THE COMPANY WITH RESPECT TO PRODUCTS COVERED BY THIS GUARANTEE. BITMORE SHALL HAVE NO LIABILITY FOR ANY INCIDENTAL, CONSEQUENTIAL OR SPECIAL DAMAGES. IN NO EVENT SHALL THIS GUARANTEE REQUIRE MORE THAN THE REPLACEMENT OF ANY PART OR PARTS WHICH ARE FOUND TO BE DEFECTIVE WITHIN THE EFFECTIVE PERIOD OF THE GUARANTEE. REFUNDS WILL BE GIVEN IF REPLACEMENT PARTS FOR DEFECTIVE MATERIALS ARE NOT AVAILABLE, BITMORE RESERVES THE RIGHT TO MAKE PRODUCT SUBSTITUTIONS IN LIEU OF REPAIR OR REPLACEMENT.

This guarantee does not extend to the purchase of opened, used, repaired, repackaged and/or resealed products, including but not limited to sale of such products on Internet auction sites and/or sales of such Products by surplus or bulk resellers. All warranties or guarantees shall immediately cease and terminate as to any Products or parts thereof which are repaired, replaced, altered, or modified, without the prior express and written consent of Bitmore.

This Agreement is made for the benefit of the parties and is not intended to benefit any third party or be enforceable by any third party. The rights of the parties to terminate, rescind, or agree any amendment, waiver, variation, or settlement under or relating to this Agreement are not subject to the consent of any third party.

This guarantee provides you with specific legal rights. You may have additional rights which may vary from country to country. Because of individual regulations, some of the above limitations and exclusions may not apply to you.

NOTE:

Failure to follow the instructions in this manual will result in the manufacturing guarantee being void. Please take extra care when connecting cables to your devices or the product to avoid damaging the ports.

Wear and tear aren't covered by the guarantee. Submersion in liquids will void the guarantee.

Devices connected to this product or App are not covered by the Bitmore guarantee.

For Bitmore products containing a Lithium-ion battery:

Lithium-ion battery powered devices are dispatched from our factory with a partial charge, depending on the storing temperature and the length of storage during transit and with the retailer, the charge held by the device will naturally decrease, for best performance we recommend charging the device fully.

Any product that is powered by a Lithium-ion battery, as with all devices using Lithium, the amount of charge the lithium cells can hold decreases over time and with use or if left in a cold environment, experiencing fluctuations in temperature or when unused for long periods of time (charge and discharged the battery often, even if you are not using it). Therefore, you may find that the amount of charge this product holds and offers may be slightly less. This is typically a slow process and a naturally recurring phenomenon and is not covered by the guarantee or guarantee.



A BIT MORE ABOUT US

Our roots are in creating high quality products, which has now grown in to developing an extensive range of audio, power and tech accessories.

Stemming from our passion for the environment, we strive to make Bitmore as eco-friendly as possible.

The combination of innovative sustainable solutions with our tech expertise means we create products that are great for you, and the planet.

@bitmoreuk



www.bitmore.co.uk
justask@bitmore.co.uk

IMPORTED AND DISTRIBUTED BY:
BITMORE LTD, PARK HOUSE,
15-19 GREENHILL CRESCENT,
WATFORD, WD18 8PH, UK

BITMORE BV,
KAPELLERLAAN 19,
6041 JB ROERMOND, NL