

5JE



KitchenAid

STAND MIXER ATTACHMENT INSTRUCTIONS

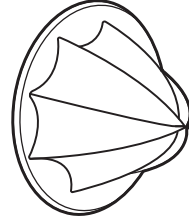
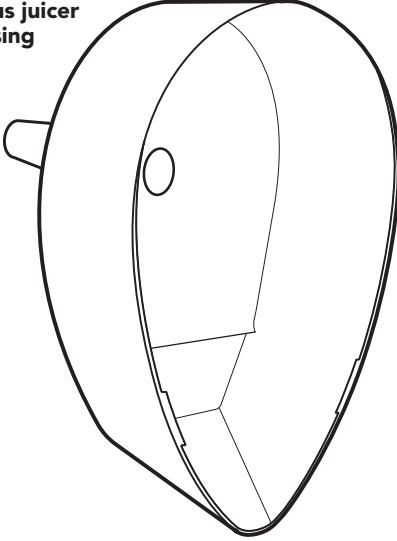
TABLE OF CONTENTS

PARTS AND FEATURES	6
Parts and accessories.....	6
STAND MIXER ATTACHMENT SAFETY	7
Important safeguards	7
Waste disposal.....	8
USING THE STAND MIXER ATTACHMENT	9
Assembling the Citrus Juicer attachment	9
USING THE STAND MIXER ATTACHMENT	10
Attaching the Citrus Juicer to the Stand Mixer.....	10
Using the Citrus Juicer attachment	11
CARE AND CLEANING	11
WARRANTY AND SERVICE	12

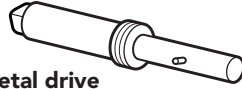
PARTS AND FEATURES

PARTS AND ACCESSORIES

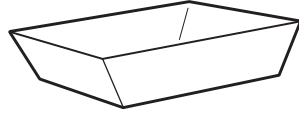
Citrus juicer housing



Reamer



Metal drive shaft



Strainer

STAND MIXER ATTACHMENT SAFETY

Your safety and the safety of others are very important.

We have provided many important safety messages in this manual and on your appliance. Always read and obey all safety messages.



This is the safety alert symbol.

This symbol alerts you to potential hazards that can kill or hurt you and others.

All safety messages will follow the safety alert symbol and either the word “DANGER” or “WARNING.” These words mean:

 **DANGER**

You can be killed or seriously injured if you don't immediately follow instructions.

 **WARNING**

You can be killed or seriously injured if you don't follow instructions.

All safety messages will tell you what the potential hazard is, tell you how to reduce the chance of injury, and tell you what can happen if the instructions are not followed.

IMPORTANT SAFEGUARDS

When using electrical appliances, basic safety precautions should always be followed, including the following:

1. Read all instructions. Misuse of appliance may result in personal injury.
2. This appliance is not intended for use by persons (including children) with reduced physical, sensory or mental capabilities, or lack of experience and knowledge, unless they have been given supervision or instruction concerning use of the appliance by a person responsible for their safety.
3. This appliance can be used by children aged 8 years and above and persons with reduced physical, sensory, or mental capabilities, or lack of experience and knowledge if they have been given supervision or instructions concerning use of the appliance in a safe way and understand the hazards involved. Children shall not play with the appliance. Cleaning and user maintenance shall not be made by children without supervision.

STAND MIXER ATTACHMENT SAFETY


4. Children should be supervised to ensure that they do not play with the appliance.
5. Never leave the appliance unattended while it is in operation.
6. Turn the appliance off, unplug from outlet, and detach the attachment from appliance before cleaning and when not in use. Turn the appliance off and make sure the motor stops completely before putting on or taking off parts.
7. The use of attachments not recommended or sold by KitchenAid may cause fire, electrical shock, or injury.
8. Do not use the appliance outdoors.
9. Avoid contacting moving parts.
10. Also see the Important Safeguards section included in the Stand Mixer “Instructions” Manual.
11. This appliance is intended to be used in household and similar applications such as:
 - staff kitchen areas in shops, offices or other working environments;
 - farm houses;
 - by clients in hotels, motels and other residential type environments;
 - bed and breakfast type environments.

SAVE THESE INSTRUCTIONS

WASTE DISPOSAL

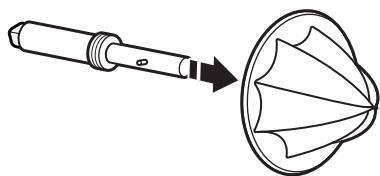
Disposal of packing material

The packing material is 100% recyclable and is marked with the recycle symbol

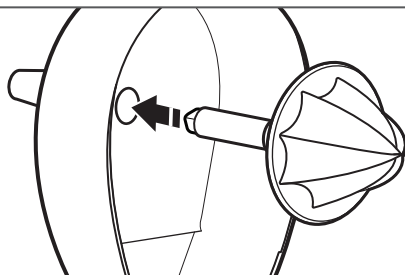
 The various parts of the packing must therefore be disposed of responsibly and in full compliance with local authority regulations governing waste disposal.

USING THE STAND MIXER ATTACHMENT

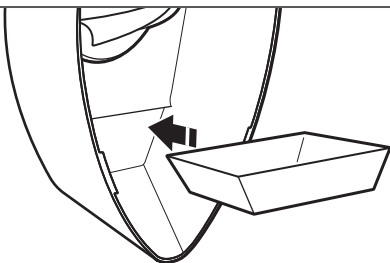
ASSEMBLING THE CITRUS JUICER ATTACHMENT



- 1** Insert the round end of the metal drive shaft into the reamer so that the pins fit into the slots.



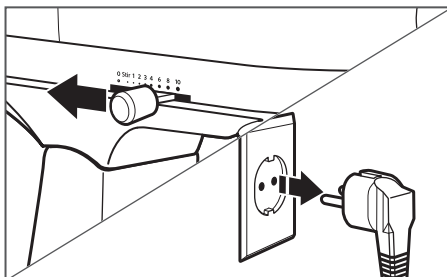
- 2** Next, insert the square end of the metal drive shaft through the hole in the Citrus Juicer housing.



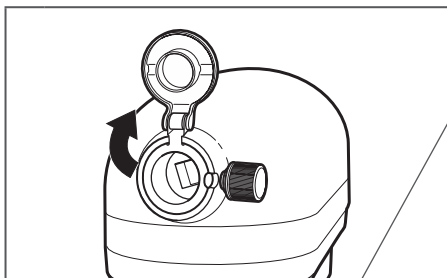
- 3** Slide the strainer into the grooves in the Citrus Juicer housing.

USING THE STAND MIXER ATTACHMENT

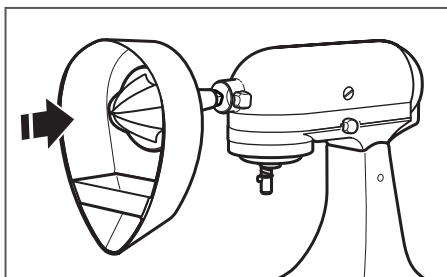
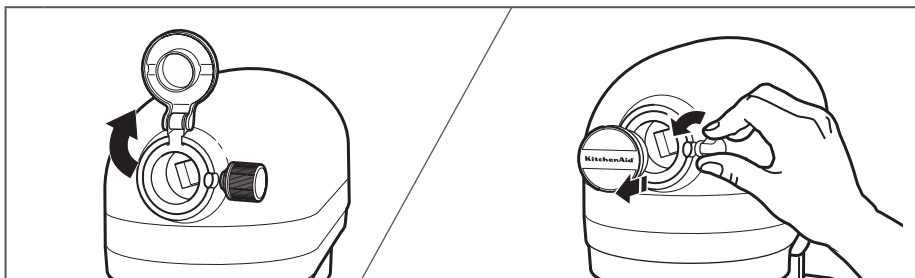
ATTACHING THE CITRUS JUICER TO THE STAND MIXER



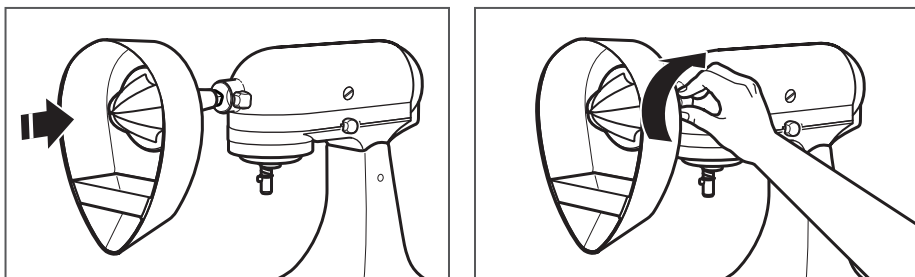
- 1** Turn Stand Mixer off and unplug.



- 2** For Stand Mixers with a hinged attachment hub cover: Flip up to open.
For Stand Mixers with a removable attachment hub cover: Turn the attachment knob counterclockwise to remove attachment hub cover.



- 3** Insert attachment shaft housing into the attachment hub, making certain the power shaft fits into the square hub socket. If necessary, rotate the attachment back and forth. The pin on the attachment housing fits into the notch of the hub rim when in the proper position.

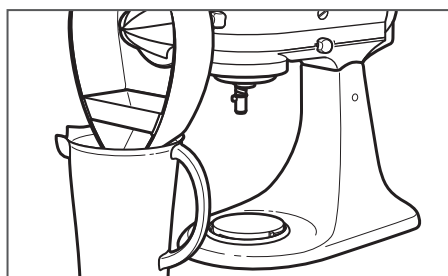


- 4** Tighten the Stand Mixer attachment hub knob until the attachment is completely secured to the Stand Mixer.

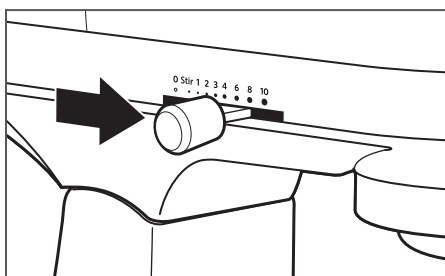
USING THE STAND MIXER ATTACHMENT

USING THE CITRUS JUICER ATTACHMENT

NOTE: The Citrus Juicer attachment is designed to juice only lemons, limes, oranges, and grapefruit.



- 1 Place a glass or a pitcher under the Citrus Juicer attachment.

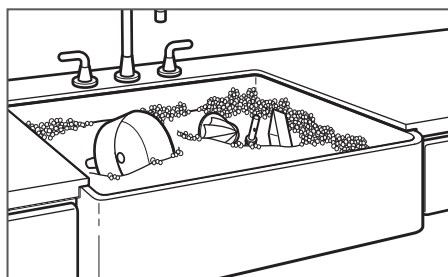


- 2 Turn the Stand Mixer to Speed 6. Firmly hold fruit, against the spinning reamer. Move the fruit in all directions to extract the juice.

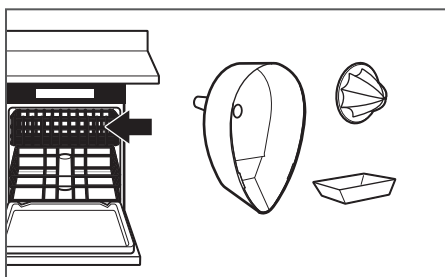
NOTE: Clean pulp from the strainer as needed while juicing.

CARE AND CLEANING

CLEANING THE CITRUS JUICER ATTACHMENT



- 1 Wash the Citrus Juicer attachment in warm sudsy water.



- 2 All plastic parts are dishwasher safe, top rack only. To avoid damage to the metal drive shaft, do not wash in the dishwasher.

WARRANTY AND SERVICE

KITCHENAID STAND MIXER ATTACHMENT WARRANTY

Length of Warranty:	KitchenAid Will Pay For:	KitchenAid Will Not Pay For:
Europe, Middle East and Africa: 5JE Two years full warranty from date of purchase.	The replacement parts and repair labour costs to correct defects in materials or workmanship. Service must be provided by an Authorised KitchenAid Service Centre.	A. Repairs when Stand Mixer attachment is used for operations other than normal household food preparation. B. Damage resulting from accident, alterations, misuse, abuse, or installation/operation not in accordance with local electrical codes.

KITCHENAID DOES NOT ASSUME ANY RESPONSIBILITY FOR INDIRECT DAMAGES.

CUSTOMER SERVICE

In U.K. and Ireland:

For any questions, or to find the nearest Authorised KitchenAid Service Centre, please find our contact details below.

NOTE: All service should be handled locally by an Authorised KitchenAid Service Centre.

Contact number for U.K. and Northern Ireland:

Tollfree number 0800 988 1266 (calls from mobile phones are charged standard network rate) or call 0194 260 5504

Contact number for Ireland:

Tollfree number +44 (0) 20 8616 5148

E-mail contact for U.K. and Ireland:

Go to www.kitchenaid.co.uk, and click on the link "Contact Us" at the bottom of the page.

Address for U.K. and Ireland:

KitchenAid Europa, Inc.
PO BOX 19
B-2018 ANTWERP 11
BELGIUM

Number for general questions:



00800 3810 4026

In other countries:

For all product related questions and after sales matters, please contact your dealer to obtain the name of the nearest Authorised KitchenAid Service/Customer Centre.

For more information, visit our website at:

www.KitchenAid.co.uk
www.KitchenAid.eu

©2017 All rights reserved. KITCHENAID and the design of the stand mixer are trademarks in the U.S. and elsewhere.

KitchenAid

©2017 All rights reserved. KITCHENAID and the design of the Stand Mixer are trademarks in the U.S. and elsewhere.