

Presentation Pilot Pro

User's Manual



VP6450

LASER Safety Statement

CAUTION: Use of controls or adjustments or performance of procedures other than those specified herein may result in hazardous radiation exposure.

The laser is activated by pressing laser button identified in the user guide.

- Do not stare into laser beam.

- Do not shine a laser pointer at anyone.

- Do not allow minors to use laser pointer unsupervised.

- Do not point laser pointer at any reflective surface. A reflected beam can be the same as a direct beam.

- Do not disassemble the device.

- Do not immerse in any liquid or expose to heat or moisture.

- Use only within the designed operating temperature range of 0-40 deg C.

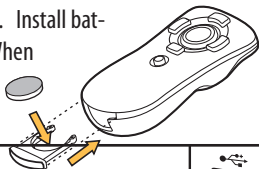
- This product has no serviceable parts.

Laser Specifications:

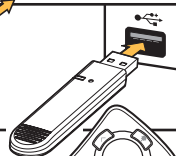
The laser used in the VP6450 complies as Class 2 laser product with: IEC/EN 60825-1: 1994+A1+A2, and CFR Title 21 1040.10 and 1040.11, except for deviations pursuant to Laser Notice No.50, dated June 24, 2007.

First Use

1. Remove the receiver from the remote's receiver bay. Install battery in the battery compartment and reinsert it. (When the receiver is in the receiver bay, it automatically turns the remote off to save power.)



2. With the computer turned on, plug the receiver into a free USB port. (If the computer displays a "Found New Hardware" dialog box, click Next until the driver is installed.)



3. Initialize the Pilot Pro by pressing the Blank button within 10 minutes of connecting the receiver.



Changing the Blank Key Code

In certain languages a different key code may be needed to blank the screen during a presentation. Three key codes are provided for the various presentation programs. To change between the codes:

- Insert the receiver into a USB port.
- Use a paper clip to press and release the recessed button on the receiver.
- The LED on the receiver will turn orange.
- Start a slide show and test the Blank screen feature.



Setting up the Pilot Pro

Your presentation remote comes set up from the factory. In most situations no adjustments are needed; however, if you have many remotes or another device which is causing interference, complete these steps to avoid interference.

Training the Receiver

1. To train the receiver to accept the digital code from the remote, remove the USB receiver from the USB port and reconnect it after a few seconds.
2. Press and hold the Next button (the right arrow) for 10 seconds until the red light on the remote turns back on. The LED on the receiver should turn from flashing green to solid green then back to flashing green.

Changing Channels

1. Remove the battery from the remote.
2. Replace the battery and hold down the Previous button (the left arrow) for 10 seconds.
3. The LED on the remote will blink the number of the current channel. Each time you press the Previous button it increases the channel by one.
4. Once you are on channel 4, increasing the channel will move it back to channel 1.
5. The LED will blink rapidly the number of the current channel.
6. Press the Next button (the right arrow) to confirm the channel.
7. Train the receiver again using the steps listed in "Training the Receiver."

Pilot Pro Controls



Pilot Pro Model VP6450

Laser Specification:

Max output power: <1mW.

Emitted wavelength: 640-660nm

The Class 2 laser beam is emitted from the front of the device, indicated by the aperture warning label.



Warranty

SMK-Link Electronics Corporation (SMK-Link) warrants to the original end-user purchaser of the Product (“you”) that the Product, excluding batteries, will be free from defects in materials and workmanship under normal use and service for one-year from date of purchase. If the product becomes defective in materials or workmanship during the warranty period, SMK-Link will, at its option, either repair or replace it. The replacement unit may be a more current or upgraded model if the originally purchased model is not available. Any Product repaired or replaced under the terms of the warranty is covered for the remainder of the original warranty period or ninety (90) days from the date of return shipment, whichever is longer. This warranty does not cover products which have been subjected to misuse, accident, physical damage, improper installation, abnormal operation or handling, neglect, inundation or fire or when product regulator label has been removed, altered or rendered illegible; nor does it cover accessory or consumable items.

SMK-Link shall not be liable for any indirect special, incidental, or consequential damages. SMK-Link’s total liability for damages for any cause related to, or arising out of, the use or inability to use the product shall not exceed the original price paid for the product even if SMK-Link has been informed of such possibility.

If your product requires service under warranty, you must first contact SMK-Link product support to receive an RMA number. Shipping of defective units back to SMK-Link is at your expense. The contact information can be found on the SMK-Link website: www.smklink.com.

This warranty does not affect your statutory rights and you may have other rights which vary from state to state and country to country. This warranty is understood to be the complete and exclusive agreement between the parties, superseding all prior agreements, oral or written, and all other communications between the parties relating to the matter of this warranty.

The above warranty does not apply to products sold in Australia. Products sold in Australia by an authorized reseller will contain an Australia specific warranty statement.

FCC Certification

This device complies with Part 15 of the FCC Rules.

Operation is subject to the following two conditions: (1) This device may not cause harmful interference, and (2) This device must accept any interference received, including interference that may cause undesired operation.

This equipment has been tested and found to comply with the limits for a CLASS B digital device, pursuant to Part 15 of the FCC rules. These limits are designed to provide reasonable protection against harmful interference when the equipment is operated in a residential installation. This equipment generates, uses, can radiate radio frequency energy and if not installed and used in accordance with the instruction guide, may cause harmful interference to radio communications. However, there is no guarantee that this radio interference will not occur in a particular installation. If this equipment does cause harmful interference to radio or television reception, which can be determined by turning the equipment on and off, the user is encouraged to try to correct the interference by one or more of the following measures:

Re-orient or relocate the receiving antenna.

Increase the separation between the equipment and the receiver.

Connect the equipment into an outlet on a circuit different from that to which the receiver is connected.

Consult the dealer or an experienced Radio-TV technician for help.

Notice: Any changes or modifications not expressly approved by the party responsible for compliance could void the user's authority to operate the equipment. Extension cables are not recommended, if used, they must be shielded in order to comply with the emission limits.

IC Certification

The term "IC" before the certification/registration number only signifies that the Industry Canada technical specifications were met.

Declaration of conformity

Manufacturer: SMK-Link Electronics Corporation
3601-B Calle Tecate
Camarillo, CA 93012

Hereby, SMK-Link declares that the VP6450 is in compliance with the essential requirements and other relevant provisions of Directive 1999/5/EC.

EMC/EMI/Safety Standards:

EN 300 440-2 V1.1.1 (2001-09)

EN 301 489-3 V1.4.1 (2002-08)

EN 301 489-1 V1.4.1 (2002-08)

EN 60825-1 (1994, A11:1996, A2:2001)

Thank You

Thank you for purchasing a Presentation Pilot Pro. We know you had other choices and we appreciate that you chose SMK-Link for your wireless needs. So that we may better serve you in the future, please register online at www.smklink.com/register.

Support

SMK-Link Electronics Corporation
3601-B Calle Tecate
Camarillo, CA 93012

TEL: (888) 696-3500

FAX: (805) 987-6665

Email: pcsupport@smkusa.com

www.smklink.com