

User's Manual

Bluetooth® Slim Keyboard



Regulatory Compliance

This device complies with Part 15 of the FCC Rules. Operation is subject to the following two conditions: (1) This device may not cause harmful interference, and (2) This device must accept any interference received, including interference that may cause undesired operation.

FCC Certification

This equipment has been tested and found to comply with the limits for a Class B digital device, pursuant to Part 15 of the FCC rules. These limits are designed to provide reasonable protection against harmful interference when the equipment is operated in a residential installation. This equipment generates, uses and can radiate radio frequency energy and, if not installed and used in accordance with the instructions, may cause harmful interference to radio communications. However, there is no guarantee that interference will not occur in a particular installation. If this equipment does cause harmful interference to radio or television reception, which can be determined by turning the equipment off and on, the user is encouraged to try to correct the interference by one or more of the following measures:

Reorient or relocate the receiving antenna.

Increase the separation between the equipment and receiver.

Consult the dealer or an experienced radio/TV technician for help.

Notice: Any changes or modifications not expressly approved by the party responsible for compliance could void the user's authority to operate the

equipment. Extension cables are not recommended, if used, they must be shielded in order to comply with the emission limits.

IC Certification

The term “IC” before the certification/registration number only signifies that the Industry Canada technical specifications were met.

Declaration of conformity

Hereby, SMK-LINK Electronics, Inc. declares that this Bluetooth Slim Keyboard is in compliance with the essential requirements and other relevant provisions of Directive 1999/5/EC. All trademarks and registered trademarks mentioned in this document are the property of their respective owners.

Features and specifications are subject to change without notice.

Table of Contents

1. System requirements.....	5
2. Package content.....	5
3. Installing batteries.....	5
4. Led status indicators.....	6-7
5. Connecting with your Bluetooth computer.....	7-8
6. Windows 7 Native Bluetooth software.....	9-11
7. Widcomm Bluetooth software.....	12-15
8. Windows XP SP2 Bluetooth software.....	16-18
9. Using the Bluetooth keyboard.....	19
10. Hot key functions.....	20
11. Warranty.....	21-22
12. Product support.....	23

System Requirements

- Hardware: Bluetooth-enabled computer (with either built-in Bluetooth capability or external Bluetooth dongle)
- Operating System: Windows 2000, XP, Vista or Windows 7

Package Contents

- Bluetooth slim keyboard
- 2 x AA batteries
- User's manual

Installing Batteries (supplied)

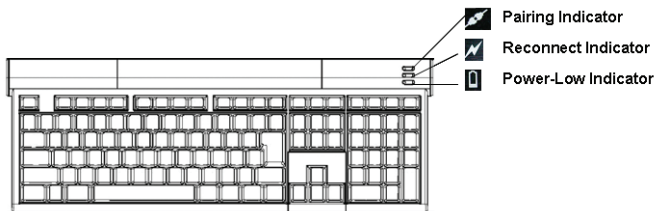
- Remove the battery cover from the bottom of the keyboard
- Insert the two supplied AA batteries (included in the package) into the battery slots. Make sure the positive (+) and negative (-) ends of the batteries match the polarity markings inside the battery compartment.
- Snap the battery cover back into position.
- Your keyboard is ready to be connected to your Bluetooth computer.



Do not mix new and used batteries in the keyboard.
Always replace with 2 batteries of the same type
from the same manufacturer.

LED Status Indicators

This keyboard features 3 LED status indicator lights:



- PAIRING indicator flashes when the keyboard enters discovery and pairing mode after the connect button is pressed. The light goes away when pairing is complete.
- RECONNECT indicator flashes when the keyboard is

reconnecting to the computer after power up, or when the keyboard wakes up from sleep mode.

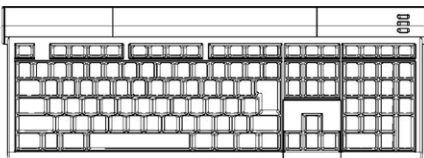
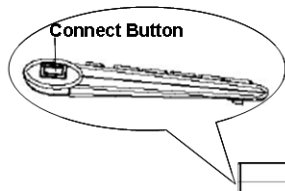
- **LOW-POWER** indicator flashes when battery power is low. The LED remains on until new batteries are installed. Without changing batteries the LED light will go off when power is completely drained.

Connecting with Your Bluetooth Computer

Before you can use Bluetooth devices for the first time you must connect your devices through a standard discovery and pairing process.

The SMK-Link Bluetooth Slim Keyboard is designed to work with Bluetooth-enabled systems. Please review the documentation that come with your computer system for any specifics regarding your Bluetooth system and/or consult with your system vendor if you cannot find the Bluetooth connectivity in your system.

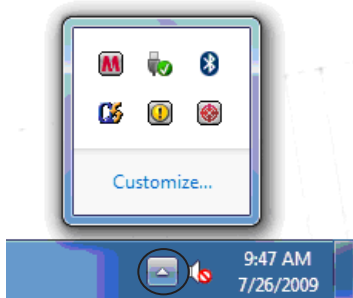
The **CONNECT** button is conveniently located at the upper-left corner of the keyboard. Press it to enter discovery and pairing mode when you are ready to connect the keyboard to your Bluetooth computer.



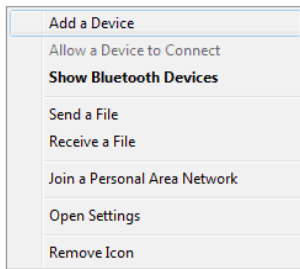
Various Bluetooth software editions are available and installed in Bluetooth computers depending on the computer system hardware, operating system, or the external Bluetooth dongle you may have installed. The following installation procedures are provided as a guideline only. Most Bluetooth systems offer comprehensive on-screen installation wizards for easy-to-follow Bluetooth device set up. For any specific installation questions, please consult your Bluetooth computer user's manual or the external Bluetooth dongle's user's manual.

Windows 7 Native Bluetooth Software

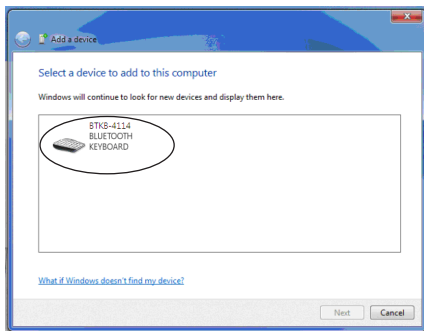
1. From the system tray located at the lower right-hand corner of your screen click on the **Show Hidden Icons** button to reveal the full list of options. Right click on the **Bluetooth** icon.



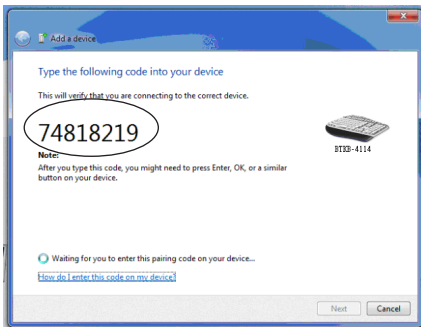
2. Select and click on **Add a Device**.



3. Your computer is in discovery mode. Press the connect button on your Bluetooth keyboard to put it in discoverable mode. The Pairing Indicator on the keyboard lights up and your computer is searching for a Bluetooth device to connect to.
4. The Bluetooth keyboard will be displayed on the screen when it's discovered by the computer. Select the keyboard icon and click **Next**. (Note: Depending on the system's signal strength, it may require more than one try to discover the keyboard. If needed, repeat these steps until the keyboard is discovered.)



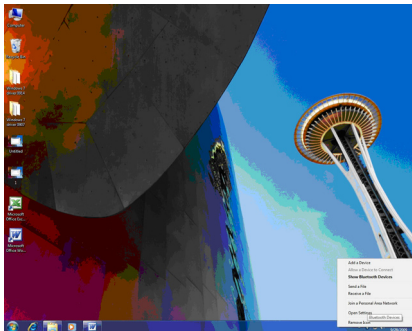
5. Using the Bluetooth keyboard to type the passkey provided by your system on the screen, press **Enter** on your keyboard and click **Next**.



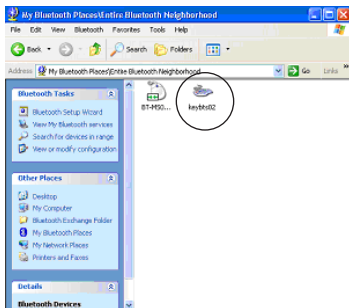
6. The system accepts the passkey; your keyboard is now connected to your Bluetooth computer.

Widcomm Bluetooth Software

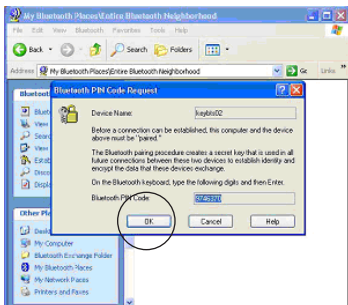
1. Make sure your computer's Bluetooth radio is turned on.
2. Right click the Bluetooth icon located on your Desktop or the System Tray, select **Add a Device**.



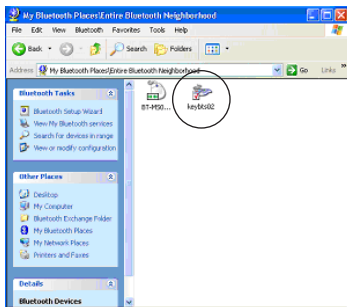
3. At this point, the keyboard must be placed in discovery mode. Press the **CONNECT** button located at the upper-left corner of the keyboard. The **PAIRING** indicator light on the upper-right corner of the keyboard will flash, indicating the keyboard is in discovery mode ready to be paired.
4. The **SMK-Link Bluetooth Keyboard** will be discovered and listed on the screen. Highlight the keyboard icon and click **Yes** or **Next**.



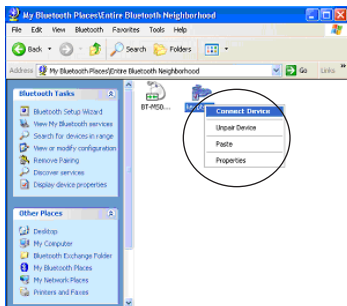
5. The Wizard will provide you with a passkey. Use your Bluetooth keyboard to enter the numbers displayed on the screen and click **OK**.



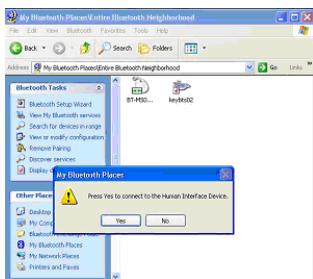
6. The red check mark by the keyboard icon indicates the device is now paired to your computer.



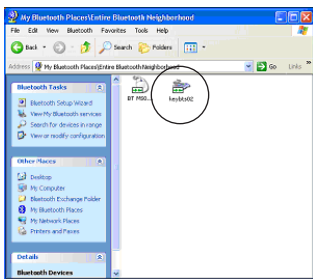
7. Right click the keyboard icon and select “Connect Device” from the pull down menu.



8. Press “Yes” to connect the keyboard to your computer.



9. The green arrow next to the keyboard icon indicates your keyboard is now connected to your computer. The keyboard will stay connected even when the computer is powered on and off or when the keyboard goes through battery changes. You are now ready to use your Bluetooth keyboard.

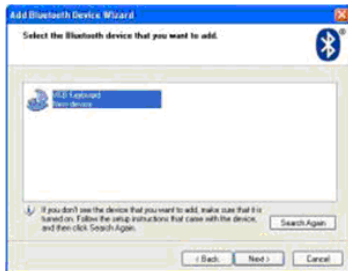


Windows XP SP2 Bluetooth Software

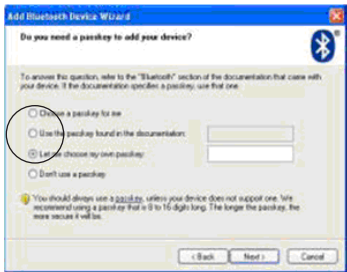
1. Right click the Bluetooth icon located on your Desktop or the System Tray, select **Add a Device**.
2. Check “My device is set up and ready to be found” and click on **Next**.



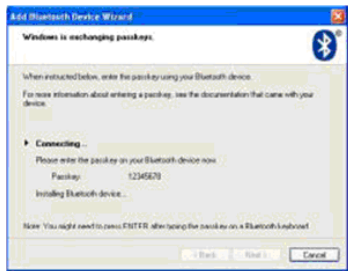
3. The keyboard icon shows up in the next screen, select the keyboard and click **Next**.



4. When prompted, select “choose a passkey for me” and click **Next**.



5. The screen will assign a random passkey automatically, type the passkey followed by <enter> using the Bluetooth keyboard.



6. When the Bluetooth keyboard is successfully connected to the system as indicated by the next screen, click **Finish** and the keyboard is ready to use.

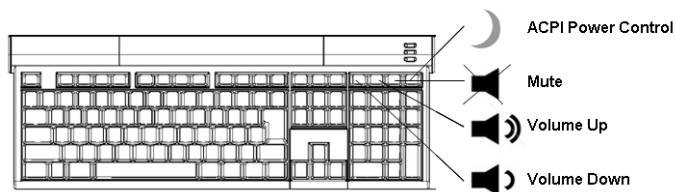


Using the Bluetooth Keyboard

The keyboard is designed with the following power management features to conserve battery power:

- **Power-saving mode**
After 2 hours of inactivity, the keyboard will automatically enter into power-saving (sleep) mode to preserve battery power. To reactivate the keyboard, simply press any key to wake it up.
- **Reconnect keyboard to the system**
When keyboard is reactivated, it automatically reconnects itself to the Bluetooth system. The process may take from less than a second up to more than a minute, depending on the system environment. During the reconnect mode the RECONNECT indicator LED flashes until the keyboard and the system connection is established. The keyboard goes through the same process every time the computer is powered on. This is not an error, it's the nature of Bluetooth.
- **Power-low Indicator**
The LOW-POWER indicator LED flashes when battery power is low. Please replace both batteries at your earliest convenience to prevent power interruption.

Hot Key Functions



- Mute: toggle key to mute and un-mute audio
- Volume Up: press to increase audio volume
- Volume Down: press to decrease audio volume
- ACPI Power Control: toggle key to send the computer to power-saving (sleep) mode and wake up.



The ACPI (Advanced Configuration and Power Interface) function is system-dependent. Not all Bluetooth computers support this function; some systems may go into sleep mode and not wake up until reboot while some systems may not go into sleep mode at all. Most newer systems support this function. Please test this feature with caution.

Warranty

SMK-Link Electronics Corporation (“SMK-Link”) warrants to the original end-user purchaser of the Product (“you”) that the Product, excluding batteries, will be free from defects in materials or workmanship under normal use and service for one-year from date of purchase. Dated invoice or sales receipt is necessary to accompany the Product returned for warranty service consideration. Any Product repaired or replaced under the terms of the warranty is covered for the remainder of the original warranty period or ninety (90) days from the date of service or return shipping, whichever is longer. If the Product becomes defective in materials or workmanship during the warranty period, SMK-Link will, at its option, either repair or replace it with a more current or upgraded model if the originally purchased model is not available. This warranty does not cover products which have been subjected to misuse, accident, physical damage, improper installation, abnormal operation or handling, neglect, inundation or fire, or when product regulatory label has been removed, altered or rendered illegible; nor does it cover accessory and consumable items. In no case shall SMK-Link be liable for any indirect special, incidental, or consequential damages based upon breach of warranty, breach of contract, negligence, strict tort or any other

legal theory. Such damages include, but are not limited to, loss of profits, loss of savings or revenues, inability to use the product or any associated equipment, cost of capital, cost of any substitute equipment, facilities or services, claims by third parties other than you, and injury to property. SMK-Link's total liability for damages for any cause related to, or arising out of, the use or inability to use the product, shall not exceed the original price paid for the product even if SMK-Link has been informed of such possibility. If your Product requires warranty service, you must first contact SMK-Link Product Support to receive an RMA Number. The contact information can be found on SMK-Link website:
<http://www.smklink.com/support/contactsupport.html>.

This warranty does not affect your statutory right and you may also have other rights which vary from state to state. Unless modified in writing, signed by both you and SMK-Link, this warranty is understood to be the complete and exclusive agreement between the parties, superseding all prior agreements, oral or written, and all other communications between the parties relating to the subject matter of this warranty.

Product Support

For technical support please contact SMK-Link Electronics Corporation at <http://www.smklink.com/support>

All trademarks and registered trademarks mentioned in this document are the property of their respective owners.

Features and specifications are subject to change without notice.

© 2009 SMK-Link Electronics Corporation