



PadDock™ Pivot

Dual Arm Locking Tablet Stand

(VP3670)

Congratulations on your purchase of your new PadDock™ Pivot Dual Arm Locking Tablet Stand. PadDock™ Pivot installation takes just minutes. Simply follow our four easy steps.

1 Install the Base to a Surface

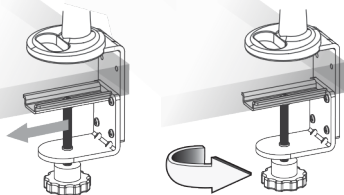
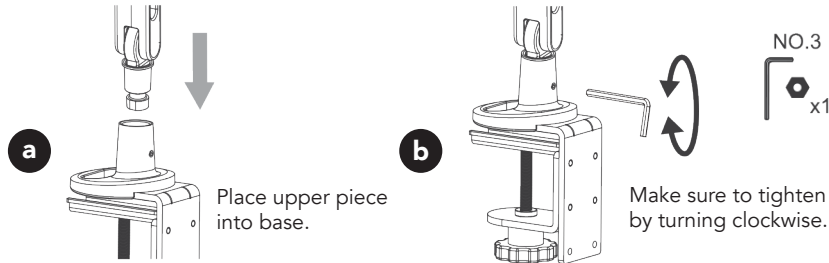


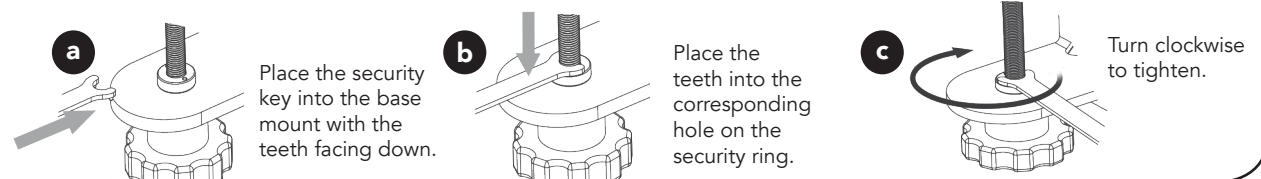
Table thickness up to 60mm

2 Install the Arm

A. Normal Installation

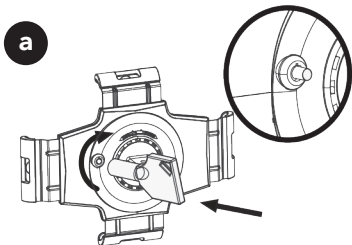


B. Secure Base Installation (Optional)

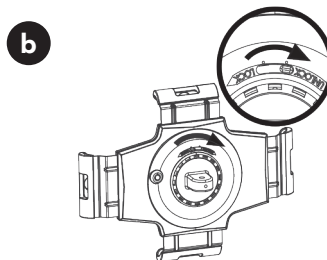


3 Secure the Tablet

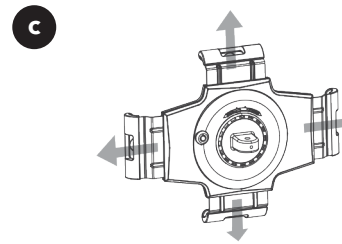
Note: PadDock™ Pivot can only be adjusted when unlocked.
YOUR PIVOT CLAW KEYS ARE NOT REPLACEABLE.
Be sure to store them in a safe place to ensure access to your tablet.



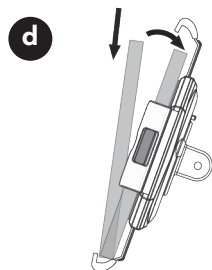
Use key to unlock the security lock.



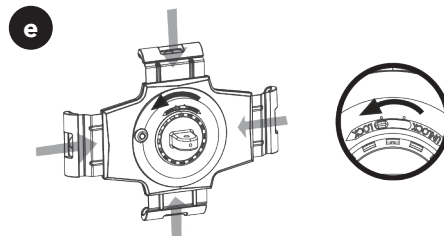
Unlock the claw.



Extend each claw.



Place tablet.

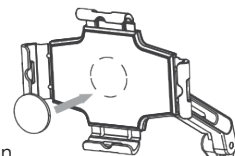


Lock the claws, then push the claw towards the tablet to fix its position. Lock the security lock by pressing the knob.

Note:

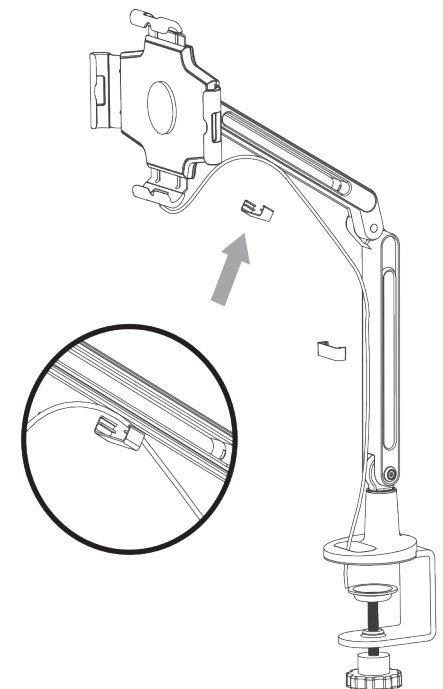
Extra cushion is available in the package for thinner devices.

Paste the cushion in the indicated position.

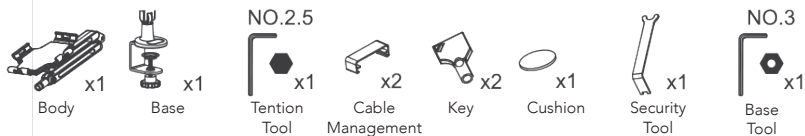


4 Route the Cable

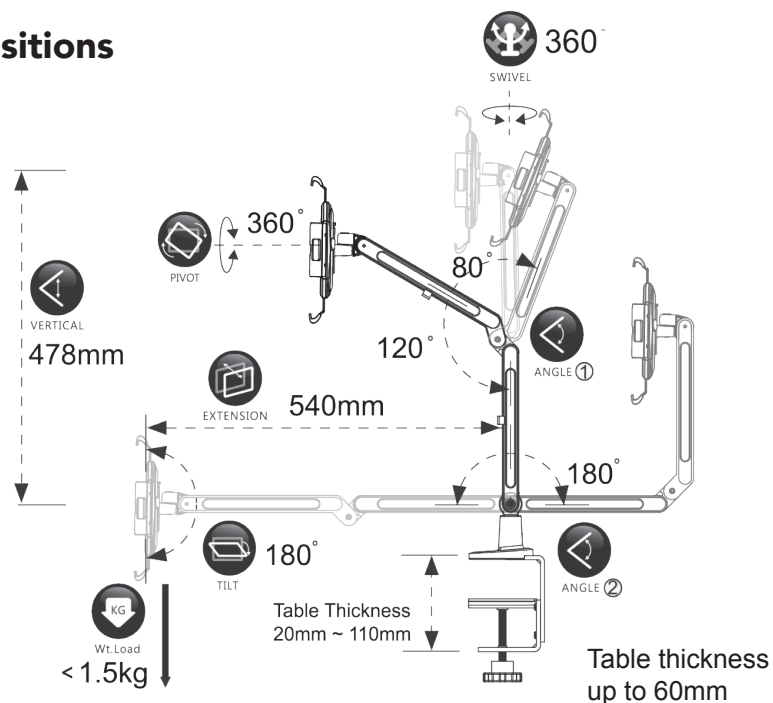
Route your tablet charge/sync cable using the cable management clamps provided.



Package Contents (VP3670)



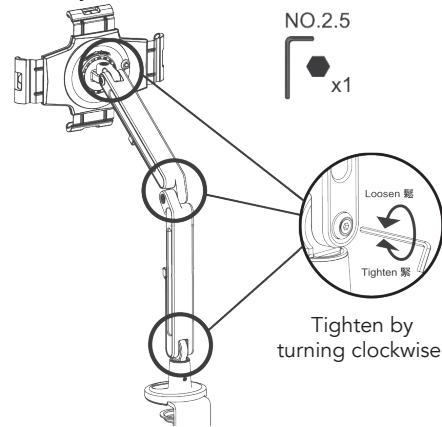
Positions



ANGLE ①	ANGLE ②	PIVOT	SWIVEL	TILT	PAN	EXTENSION	VERTICAL	Wt.Load
200°	180°	360°	360°	180°	280°	540mm	478mm	<1.5kg

Tension Adjustment

Note: All products are adjusted to the most suitable tension before leaving the factory. Do not alter unless necessary. Screws & hinges will loosen during use. Use the tools provided to tighten them as necessary.



Limited Warranty

SMK-Link Electronics Corporation (SMK-Link) warrants to the original end-user purchaser of the Product ("you") that the Product, excluding batteries, will be free from defects in materials and workmanship under normal use and service for one-year from date of purchase. If the product becomes defective in materials or workmanship during the warranty period, SMK-Link will, at its option, either repair or replace it. The replacement unit may be a more current or upgraded model if the originally purchased model is not available. Any Product repaired or replaced under the terms of the warranty is covered for the remainder of the original warranty period or ninety (90) days from the date of return shipment, whichever is longer. This warranty does not cover products which have been subjected to misuse, accident, physical damage, improper installation, abnormal operation or handling, neglect, inundation or fire or when product regulator label has been removed, altered or rendered illegible; nor does it cover accessory or consumable items.

SMK-Link shall not be liable for any indirect special, incidental, or consequential damages.

SMK-Link's total liability for damages for any cause related to, or arising out of, the use or inability to use the product shall not exceed the original price paid for the product even if SMK-Link has been informed of such possibility.

If your product requires service under warranty, you must first contact SMK-Link product support to receive an RMA number. Shipping of defective units back to SMK-Link is at your expense. The contact information can be found on the SMK-Link website: www.smklink.com.

This warranty does not affect your statutory rights and you may have other rights which vary from state to state and country to country. This warranty is understood to be the complete and exclusive agreement between the parties, superseding all prior agreements, oral or written, and all other communications between the parties relating to the matter of this warranty.

The above warranty does not apply to products sold in Australia. Products sold in Australia by an authorized reseller will contain an Australia specific warranty statement.

SMK-Link Support

3601-B Calle Tecate
Camarillo, CA, 93012
(888) 696-3500
pcsupport@smkusa.com

SMK-Link, the SMK-Link logo, and Paddock are trademarks of SMK-Link Electronics