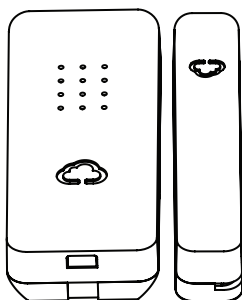
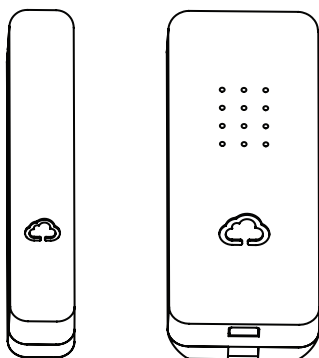


How to Associate Reed KumoSensor

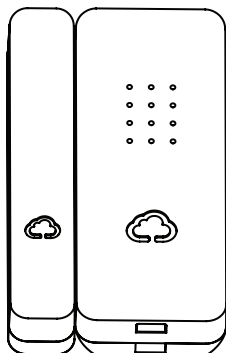


Step 1. Reed KumoSensors are shipped with battery installed; but to reduce waste, there is no battery insulation tape to pull out.

The matching magnet is placed in the opposite orientation and on the **right** side in package.

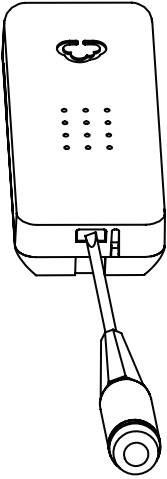


Step 2. Rotate the magnet so that the logo are aligned in the same orientation, place it on the **left** side of the main sensor element.

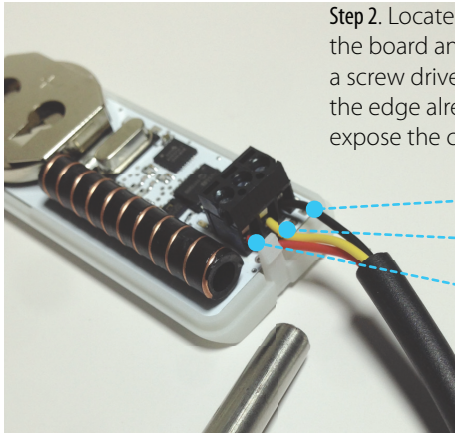


Step 3. Move the magnet in contact with the Reed KumoSensor and then away. A LED light should start flashing for about 2 minutes. Search and associate during that time.

How to Connect DS18B20 External Temperature Probe



Step 1. Open the case by pushing in the snap hook on both end using a flat head screw driver or a similar tool.



Step 2. Locate the 3 pin terminal block at the edge of the board and attach the 3 wire DS18B20 probe using a screw driver. (Note: if the wire is not stripped at the edge already, you need to use a wire stripper to expose the copper at the wire edge first)

Black

Yellow/White

Red

Step 3. Close the cap making sure the 3 wires connected to the terminal passes through the opening in the cap.