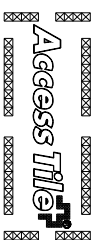
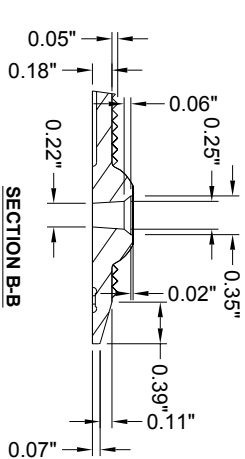
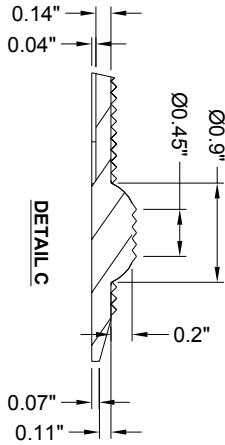
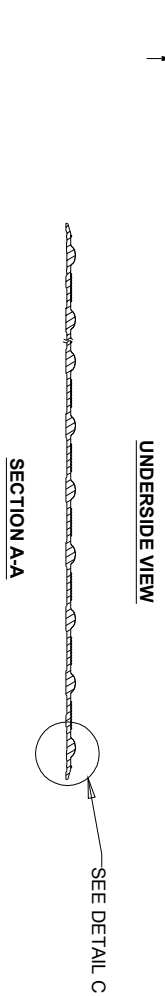
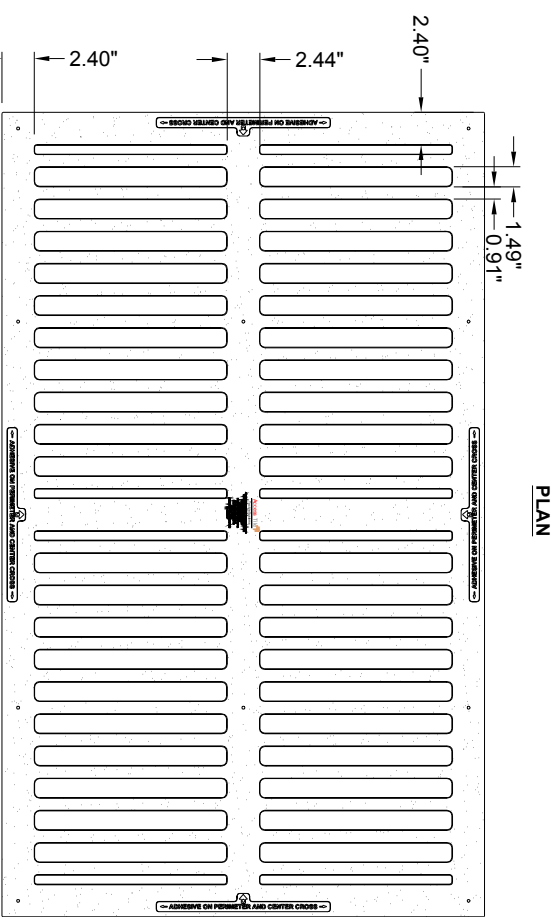
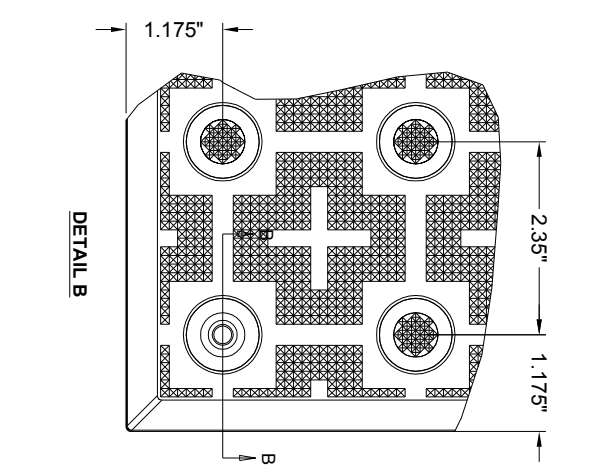
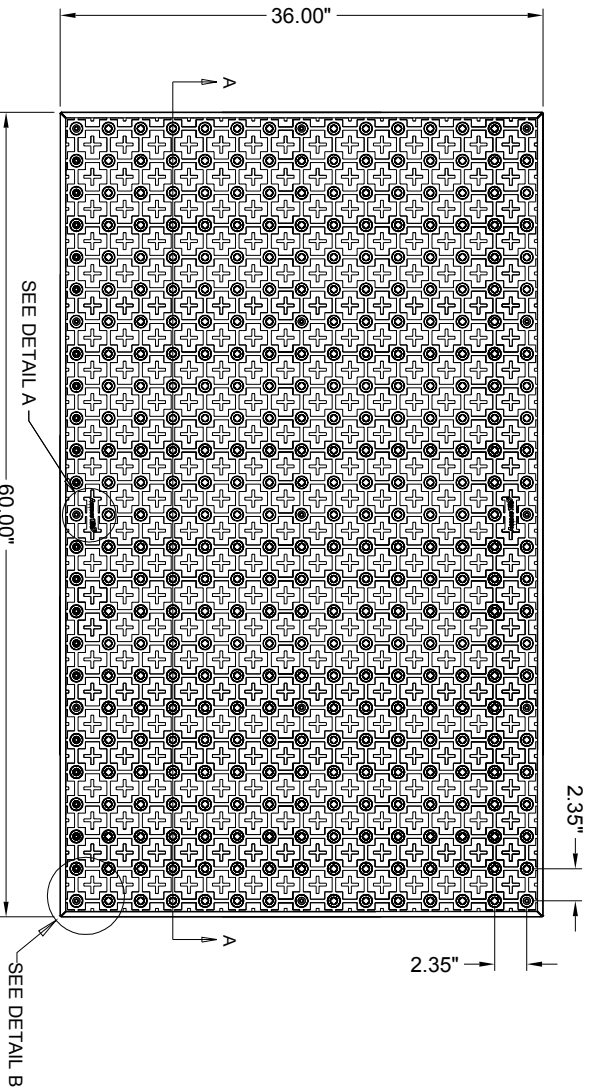


3'X5'

SURFACE APPLIED  
2.35" DOME SPACING

www.AccessTile.com 888-679-4022



www.AccessTile.com  
Access Products Inc

© Access Products Inc. AND THE THREE AND TWO DIMENSIONAL DESIGNS ON THE TILE BETWEEN DOMES AND ON DOMES ARE TRADEMARKS OF ENVIRO DESIGN SYSTEMS INC. LIMITED STATES, CANADA AND INTERNATIONALLY MANUFACTURED AND DISTRIBUTED UNDER LICENSE BY ACCESS WORLD PRODUCTS INCORPORATED  
www.accessworld.com  
KENNETH E. SEZKELT

MATERIAL LIST

ITEM	DESCRIPTION	PART NO.	QTY
1	ACCESS TILE	ACC-S-3X5	1
2	1/8" ANCHOR	ACC-S-ANCH	15
3	TACTILE BOND AND SEAL	TBS-010	1 ea

NOTE: FASTENERS AND 1 TUBE OF TACTILE BOND AND SEAL ARE INCLUDED WITH TILE

REFERENCE DRAWINGS

DWG. NO.	DESCRIPTION

No.	DATE	REVISION	APPR.

SCALE 1"=1'-0" UNL. 0 3 6 9 12 15

DESIGNED	DATE
KES	10/09/2008

DRAWN	RNO	DATE
KES		10/15/2008

CHECKED KES

PROJECT MANAGER

TITLE DETECTABLE MARKING SURFACE PART NO. ACC-S-3X5

MATERIAL POLYMER COMPOSITE

SUBJECT ACCESS TILE

PROJECT TRUNCATED DOME, DETECTABLE WARNING TACTILE SURFACE

ACCESS TILE

TRUNCATED DOME, DETECTABLE WARNING TACTILE SURFACE

3X5 SURFACE APPLIED

INLINE DOME TILE DRAWING.

DRAWING NO. ACC-S-3X5

REV. NO. 0