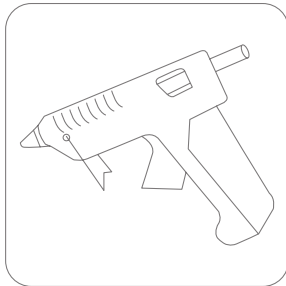


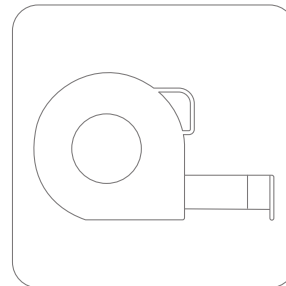
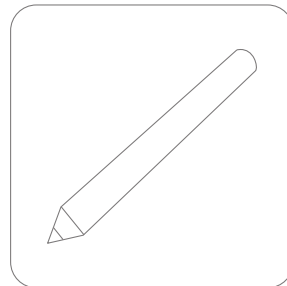
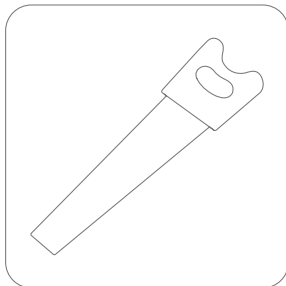
Installation instructions for Linela skirting boards

1. You need two types of glue to install Linela skirting boards:

- Vilo mounting adhesive - for skirting boards
- hot glue - for finishing accessories



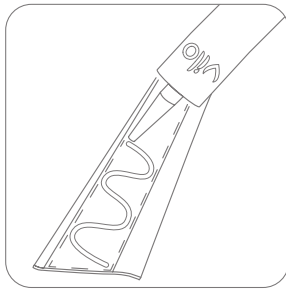
2. Prepare the tools: sharp saw, pencil and ruler.



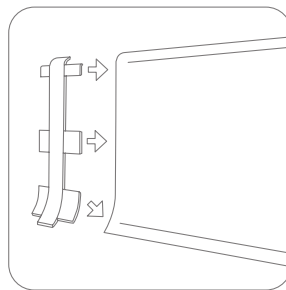
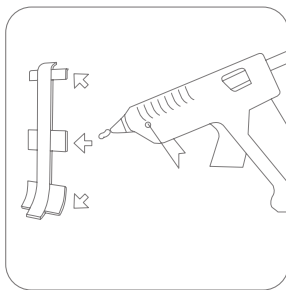
3. Peel off the label from the board - on its reverse you will find a detailed assembly instruction.

4. Cut the boards to the correct length.

5. Apply Vilo assembly glue to the boards - exactly as in the instructions on the label.



6. Fix the appropriate finishing accessories with hot glue. Apply glue to the elements shown in the picture and connect them to the skirting board



7. Press the skirting boards with attached accessories to the wall.

