



GOLDSTRIKE® STRIKE WINDSHIELD TRIM

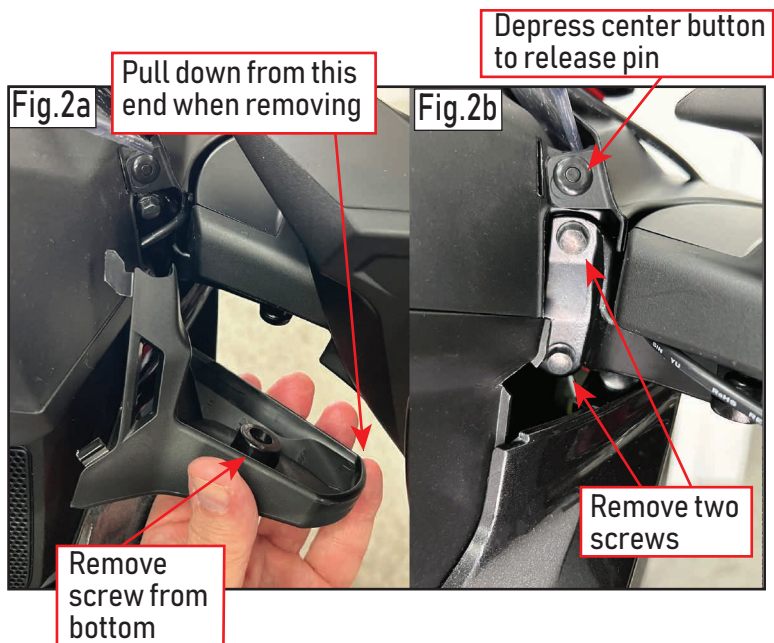
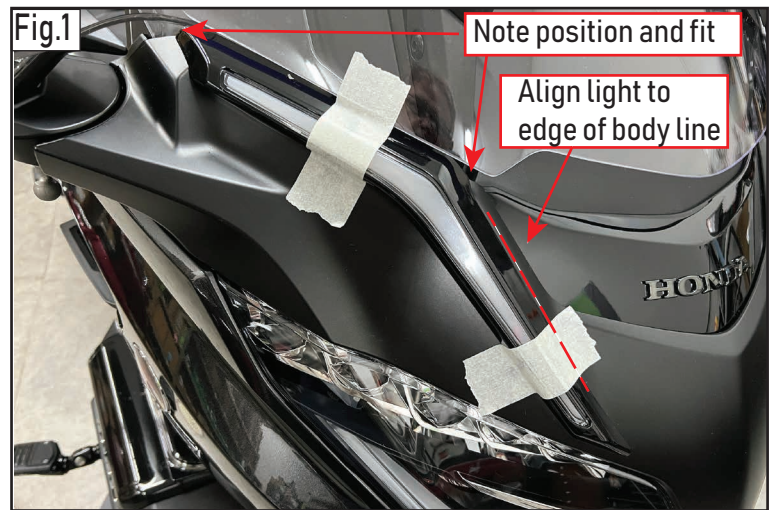
- WARNING** This indication alerts you to the fact that ignoring the contents described herein can result in potential serious injury or death if not followed.
- CAUTION** This indication alerts you to the fact that ignoring the contents described herein can or will result in material damage and/or personal injury.
- ATTENTION** This indication alerts you to the fact if you ignore this detail you will affect the performance or functionality of the product.

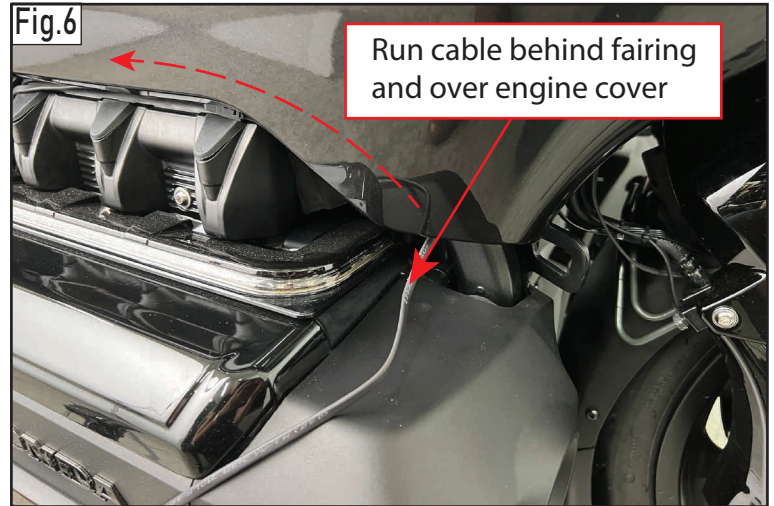
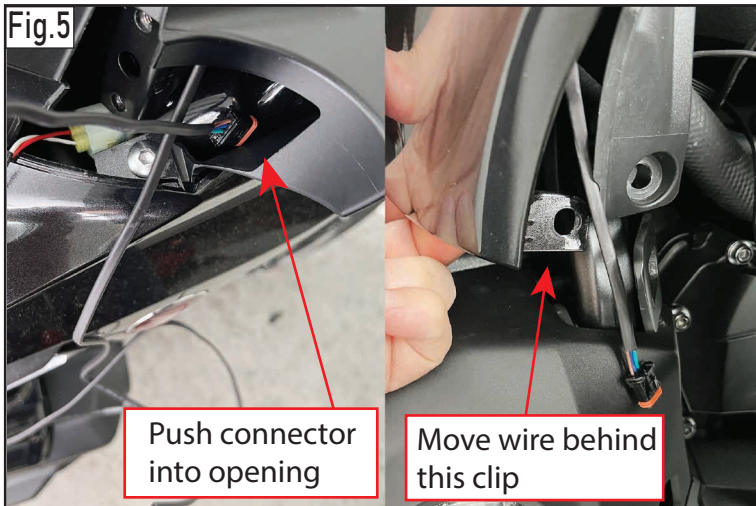
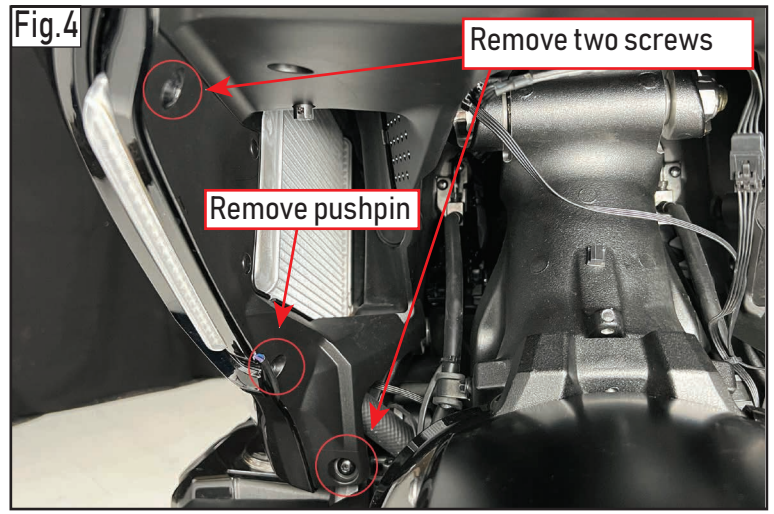
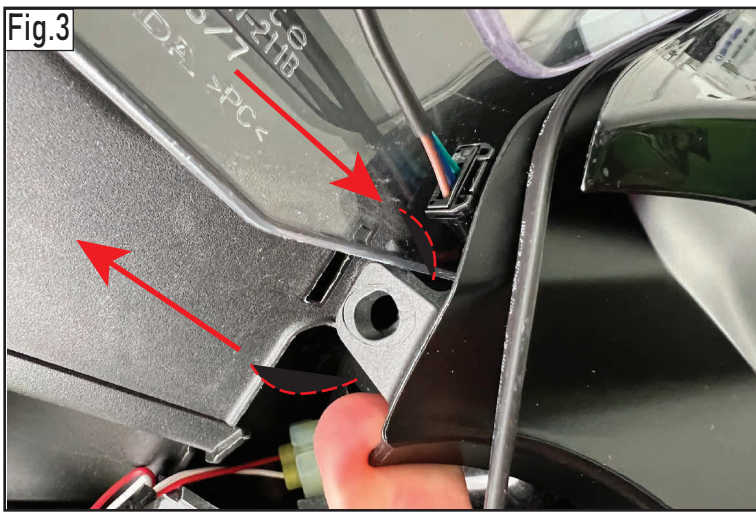
All Giro products are designed for "easy assembly" and/or "plug and play". We recommend a competent mechanic install our products, using standard mechanical procedures to assure a safe and successful installation. Read completely and understand the instructions prior to starting installation.

NOTE: Giro products are designed and manufactured under very strict quality control. Giro warrants that products sold to the original purchaser shall be free from any defects in materials and workmanship for a period of 3 (three) years from the date of purchase, and a limited lifetime warranty against LED failure. Giro will have no obligation if the customer cannot show proof of purchase. Warranty will not be granted unless the part is properly installed, unmodified and maintained. Giro will not be liable for any consequential and incidental damages, including labor, or non-Giro products. Please visit Ciro3d.com for our complete warranty policy.



1. Park on a level surface and ensure the engine has time to cool before installation. You will need a 48000 Plug-n-Play installation kit harness to plug lights into.
2. Remove seat and set aside. Plug in light to test and understand all functions before beginning install. Unplug and continue.
3. Clean area where light will be positioned thoroughly with an ammonia based cleaner. Dry fit light into position and temporarily tape into place. Fig. 1
4. Remove mirror assembly. Remove screw at bottom of mirror and gently remove bottom cap cover. Remove the two screws and safely set mirror assembly aside. Fig. 2a
5. Remove pushpin by depressing pin at center button and remove to allow fairing to flex out. Fig. 2b
6. Pull out fairing slightly and slide connector wire down in front of windshield. Fig. 3
7. Remove two screws and pushpin on inside of fairing and set aside. Push connector into opening at top and feed down to bottom while pulling fairing slightly outward. Some type of fishtape may be helpful to get connector to the bottom. Fig. 5
8. With wire behind front clip, feed it up and over engine cover. Attach a wire keeper and cable tie to connector wire and attach wire keeper behind fairing to keep wire above engine cover. Fig. 6





9. Feed wire through fairing at midway point and pull through. Fig. 7

10. Remove screw at top of fairing cover and pull out slightly and bring up wire behind the cover and plug into 48000 Plug-n-Play installation kit harness. Fig. 8

11. Repeat steps 3-10 on other side of motorcycle. Reattach all screws and pins and necessary cable ties to secure wiring.

12. Mark position of lights with masking tape, remove backing tape on light and adhere to motorcycle using even pressure for 30-60 seconds. Temperature should be above 50 degrees for adhesive to cure properly.

