

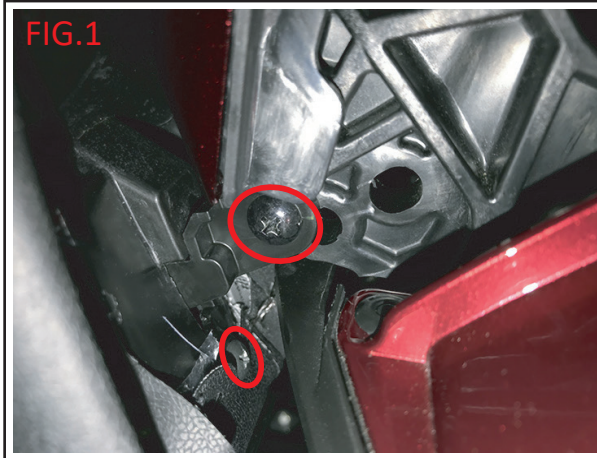


GOLDSTRIKE™ PASSENGER ARMRESTS

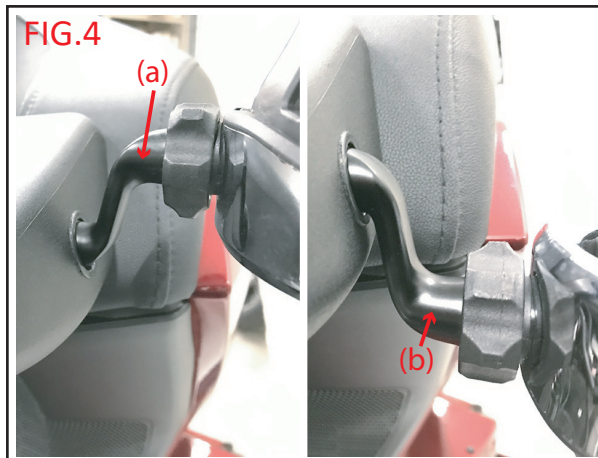
- Parts Included:
- 1 LEFT ARM REST ASSEMBLY
 - 1 RIGHT ARM REST ASSEMBLY
 - 1 ACCESSORY MOUNT KIT
 - 1 HARDWARE KIT

Installation Instructions:

1. Park on a level surface and shut off the motorcycle. Lift the motorcycle onto its center stand if available.
ATTENTION: Ensure the engine has time to cool completely before installation.
2. Remove the plastic covers on the OEM armrests. Open trunk and remove two screws from the hinge area. Loosening the back rest pad might help improve access to these screws. Pull the covers out the front of the armrest. FIG.1
3. Insert the aluminum threaded link from the back side of the hinge mechanism. FIG.2



4. Slide the armrest into the hole exposed by the plastic cover from step 3. Align its mounting holes with the aluminum threaded link from step 4. **NOTE:** The accessory mounting hole in the arm rest faces out.
5. Install the M6 x 20 Phillips head screws and washers through the armrest mount into the aluminum threaded link. FIG.3
6. Repeat on the other side of the motorcycle
7. Close the trunk. Insert the accessory hole plugs. Leave plug(s) out to install the accessory mount.
8. To install the accessory mount insert the mount offset up, and rotate it 180deg down. FIG.4 (a - b)
NOTE: If you desire a tight pivot, install the included o-ring. If you want the accessory to swing freely, leave the o-ring off.



WARNING:

This indication alerts you to the fact that ignoring the contents described herein can result in potential serious injury or death if not followed.

CAUTION:

This indication alerts you to the fact that ignoring the contents described herein can or will result in material damage and/or personal injury.

ATTENTION:

This indication alerts you to the fact if you ignore this detail you will affect the performance or functionality of the product.

All **Ciro** products are designed for "easy assembly" and/or "plug and play". We recommend a competent mechanic install our products, using standard mechanical procedures to assure a safe and successful installation.

NOTE:

Ciro products are designed and manufactured under very strict quality control. **Ciro** warrants that products sold to the original purchaser shall be free from any defects in materials and workmanship for a period of 3 (three) years from the date of purchase, and a lifetime warranty against LED failure.

Ciro will have no obligation if the customer cannot show proof of purchase. Warranty will not be granted unless the part is properly installed and maintained. **Ciro** will not be liable for any consequential and incidental damages, including labor, or non-**Ciro** products. Please visit our website Ciro3d.com for our complete warranty policy.