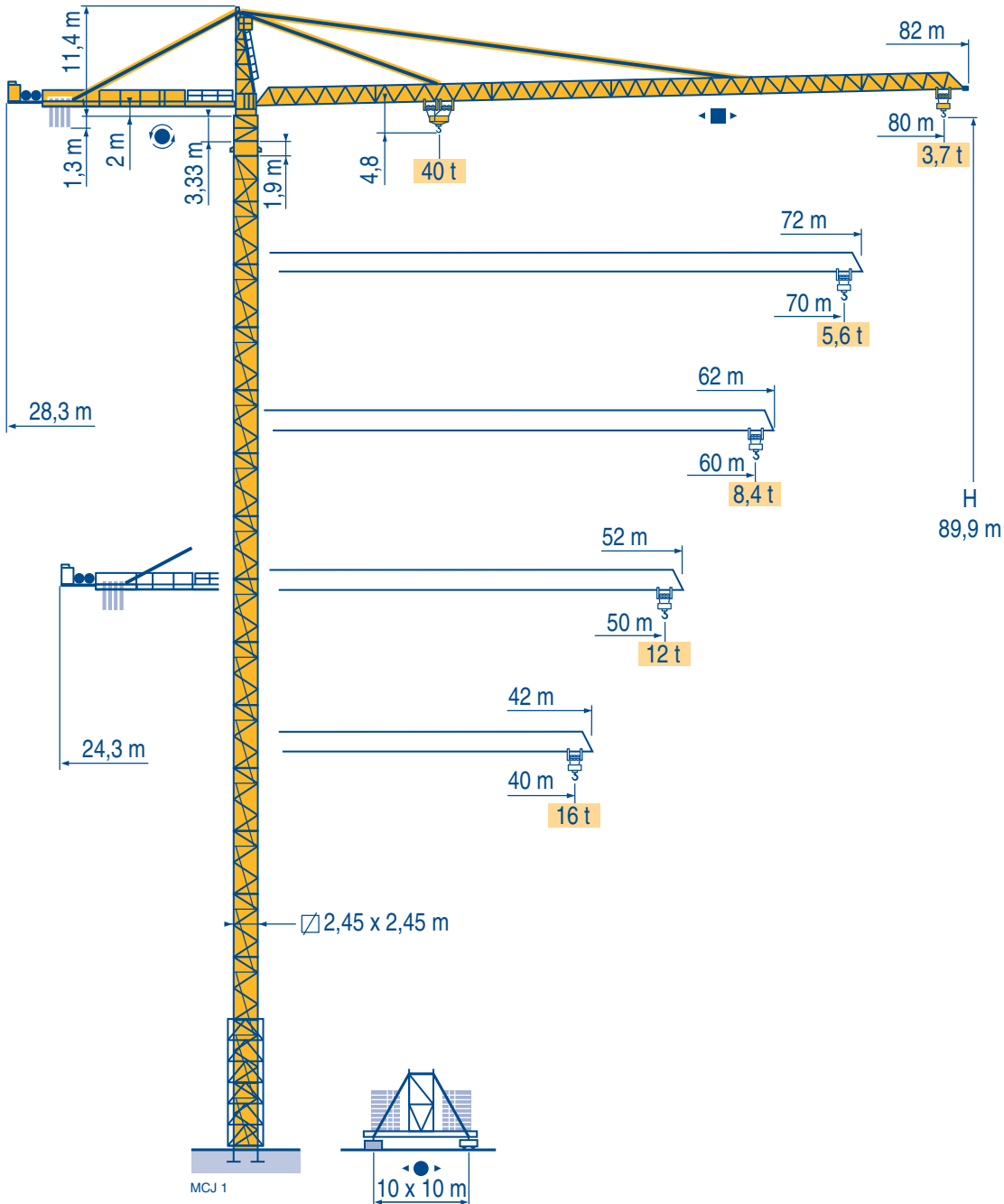


MD 560



Mat / Réactions \square 2,45 m x 2,45 m

Maste /
Eckdrücke

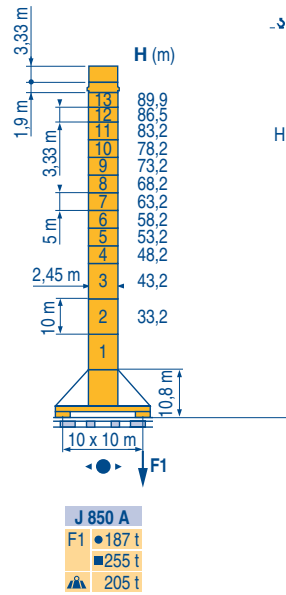
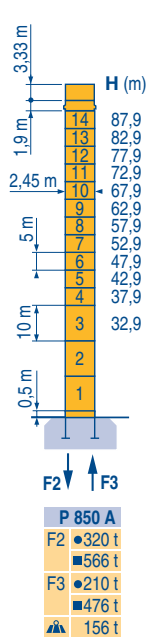
Masts /
Reactions

Mástil /
Reacciones

Torre / Reazioni

Tramo /
Reacções

MCJ 1



Courbes de charges

Lastkurven

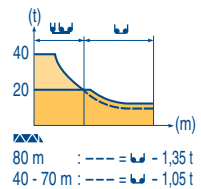
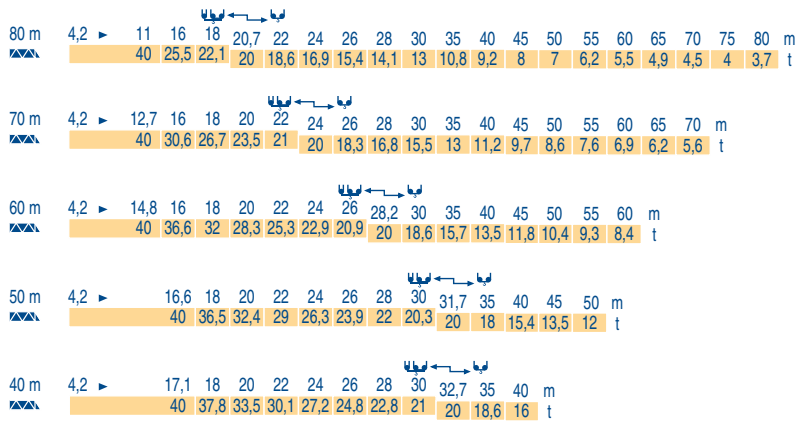
Load diagrams

Curvas de cargas

Curve di carico

Curva de cargas

MCJ 1



MD 560



F

Réactions en service
 Réactions hors service



A vide sans lest (ni train de transport) avec flèche et hauteur maximum.



Nous consulter

D

Reaktionskräfte in Betrieb
 Reaktionskräfte außer Betrieb

Ohne Last, Ballast (und Transportachse), mit Maximalausleger und Maximalhöhe.

Auf Anfrage

GB

Reactions in service
 Reactions out of service

Without load, ballast (or transport axles), with maximum jib and maximum height.

Consult us

E

Reacciones en servicio
 Reacciones fuera de servicio

Sin carga, sin lastre, (ni tren de transporte), flecha y altura máxima.

Consultarnos

I

Reazioni in servizio
 Reazioni fuori servizio

A vuoto, senza zavorra (ne assali di trasporto) con braccio massimo e altezza massima.

Consultateci

P

Reacções em serviço
 Reacções fora de serviço

Sem carga (nem trem de transporte)- sem lastro com lança e altura máximas.

Consultar-nos

Lest de contre-flèche
Gegenauslegerballast
Counter-jib ballast
Lastre de contra flecha
Contrappeso
Lastros da contra lança

MCJ 1

		4000 kg - 6000 kg	
		215 LBR 100	245 LBR 100
		▲ (kg)	▲ (kg)
80 m	28,3 m	24 000	24 000
70 m	28,3 m	22 000	22 000
60 m	28,3 m	22 000	22 000
50 m	24,3 m	24 000	24 000
40 m	24,3 m	18 000	18 000

Lest de base - Grundballast
Base ballast - Lastre de base
Zavorra di base - Lastros da base

MCJ 1

2,45 m	J850A	H (m)	89,9	86,5	83,2	78,2	73,2	68,2	63,2	58,2	53,2	48,2	43,2	33,2
			▲ (t)	180	156	132	108	72	60	60	60	60	60	60

Mécanismes
Antriebe
Mechanisms
Mecanismos
Meccanismi
Mecanismos

MCJ 1

MD 560 480 V 60 Hz										ch - PS hp	kW			
▲ ▼	215 LBR 100	m/min	3,8/38	6/60	9,6/96	15,2/152	1,9/19	3/30	4,8/48	7,6/76	215	158	580 m	
	t	20	12,05	7,05	3,9	40	24,1	14,1	7,8					
◀ ▶	245 LBR 100	m/min	4,4/44	6,8/68	10,8/108	17,2/172	2,2/22	3,4/34	5,4/54	8,6/86	245	180	650 m	
	t	20	12,3	7,2	4	40	24,4	14,3	8					
◀ ▶	15 DVF 16	m/min	0 → 50 (20 t) 0 → 67 (7,5 t) 0 → 100 (2,5 t)				0 → 33 (40 t) 0 → 67 (8,2 t) 0 → 100 (2,5 t)				15	11		
	R27	tr/min U/min rpm	0 → 0,7										3 x 9	3 x 6,6
	J 850 A	m/min												
CEI 38		IEC 38		kVA										
480 V (+6% -10%) 60 Hz		215 LBR : 240 kVA 245 LBR : 270 kVA				2000 / 14								

MD 560

POTAIN

	F	D	GB	E	I	P
	Levage	Heben	Hoisting	Elevación	Sollevamento	Elevação
	Distribution	Katzfahren	Trolleying	Distribución	Distribuzione	Distribuição
	Orientation	Schwenken	Slewing	Orientación	Rotazione	Rotação
	Translation	Kranfahren	Travelling	Traslación	Traslazione	Translação
	Conforme aux directives CEE sur le niveau acoustique	Gemäss EWG-Richtlinien für den Schall-Leistungspegel	In compliance with the EEC Instructions on noise level	Conforme con las directivas CEE sobre el nivel acústico	Conforme alle direttive CEE sul livello acustico	Conforme as directivas CEE sobre o nível acústico



Document commercial non contractuel. Pour toute information technique se référer à la notice correspondante

Unverbindliches Vertriebsdokument. Für technische Informationen, siehe die entsprechenden Anweisungen.

This commercial document is not legally binding. For any technical information, please refer to the corresponding instructions.

Documento commercial no contractuel. Para cualquier información técnica, ver la noticia correspondiente.

Documento commerciale non vincolante, per tutte le informazioni tecniche fare riferimento al catalogo istruzioni

Documento comercial não contratual. Para qualquer informação técnica complementar consultar as respectivas instruções



Manitowoc Crane Group



18, rue de Charbonnières - B.P.173
69132 ECULLY Cedex - France

Tél. : (33) 4 72 18 20 20
Fax. : (33) 4 72 18 20 00
www.manitowoccrane.com www.potain.com

Americas

Tel: +1 920 683 6322
Tel: +1 717 597 8121

Europe - Middle East - Africa

Tel : +(33) 4 72 81 50 00
Tel : +(44) 191 565 6281

Asia - Pacific

Tel: +(65) 6861 7133
Fax: +(65) 6862 4142

www.manitowoccrane.com

MD 560

Réf. 2004 52 MCJ 1

Copyright.Reproduction interdite © POTAIN 2004