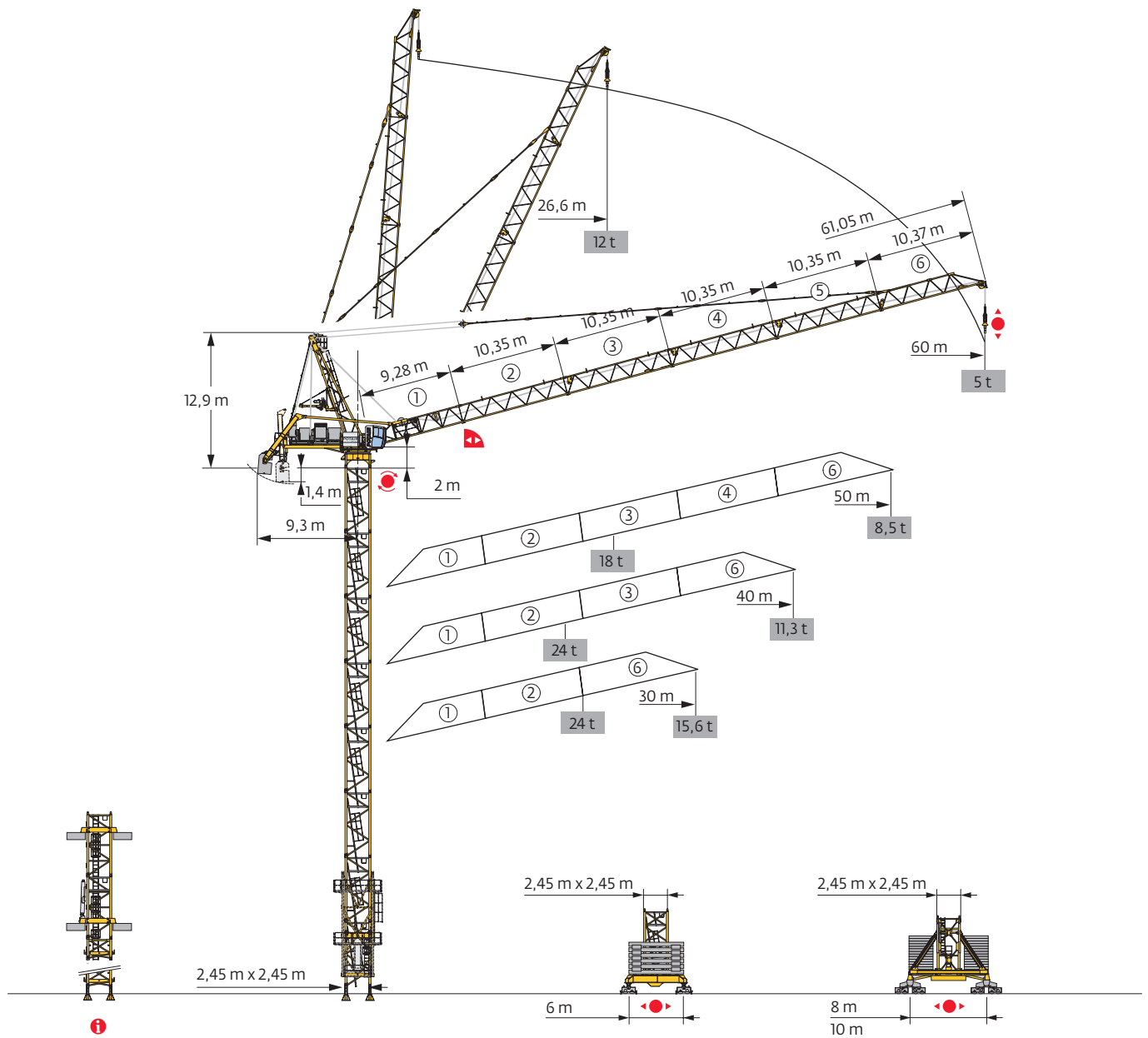


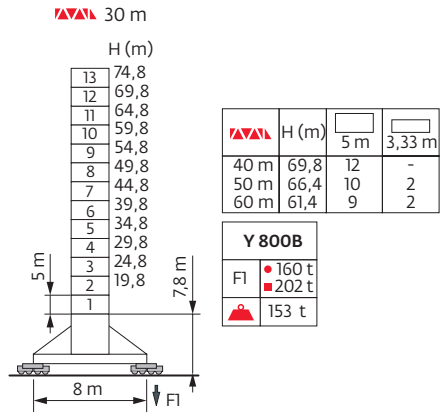
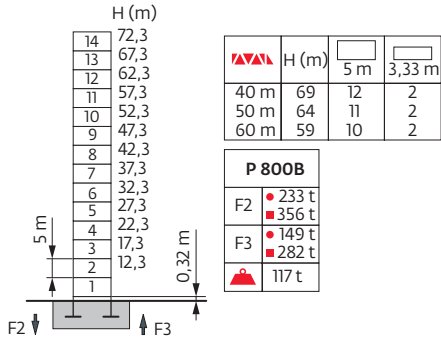
Potain MR 415 H24



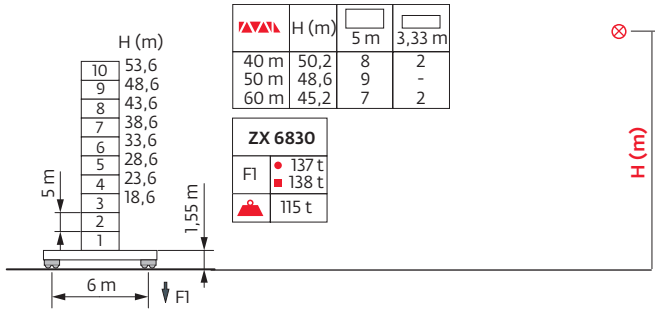
Mât - Réactions / Mast - Reaktionskräfte / Mast - Reactions / Mástil - Reacciones / Torre - Reazioni
 Tramo - Reações / Реакция опор мачты

2,45 m

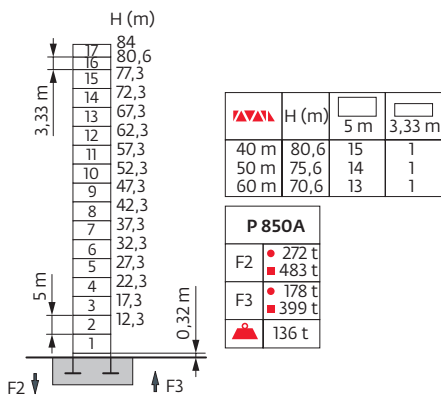
30 m



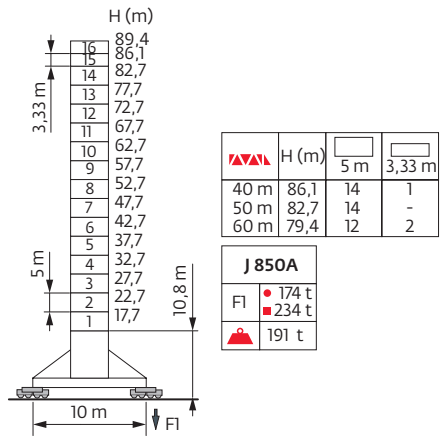
30 m



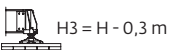
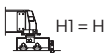
30 m



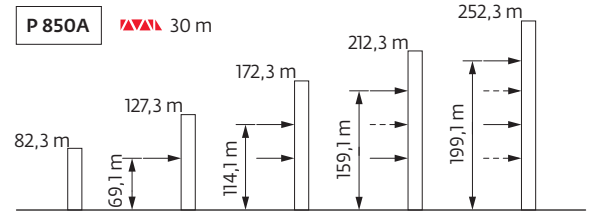
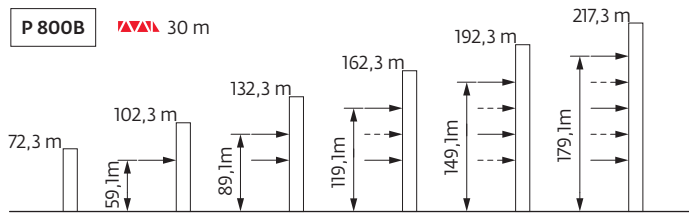
30 m



ZX 6830



Ancrages / Verankerungen / Anchorages / Anclajes / Ancoraggi
 Ancoragem / Анкера



Courbes de charges / Lastkurven / Load curves / Curvas de cargas / Curve di carico
 Curvas de carga / Кривые нагрузок

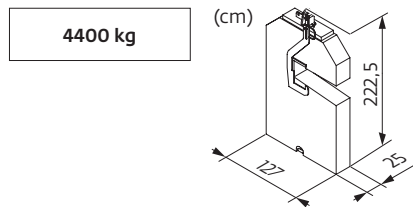
60 m	5,9	▶					26,6	28	30	35	40	45	50	55	60	m	
▲▼▲▼	↓						12	11,4	10,6	9	7,8	6,9	6,1	5,5	5	t	
50 m	5,2	▶				23,6	24	25	26	28	30	35	36,1	40	45	50	m
▲▼▲▼	↓					18	17,7	17	16,3	15	13,9	11,8	-	10,2	8,9	7,9	t
	↓												12	10,8	9,5	8,5	t
40 m	4,4	▶	18,8	20	22	24	25	26	28	30	35	37,8	40				m
▲▼▲▼	↓		24	22,5	20,4	18,6	17,8	17,1	15,8	14,6	12,4	-	10,7				t
	↓												12	11,3			t
30 m	3,7	▶	20	22	24	25	26	28	30								m
▲▼▲▼	↓		24	21,7	19,8	19	18,2	16,8	15,6								t
	↓								12								t

Lest de base / Grundballast / Base ballast / Lastre de base / Zavorra di base
 Lastro da base / Базовый Балласт

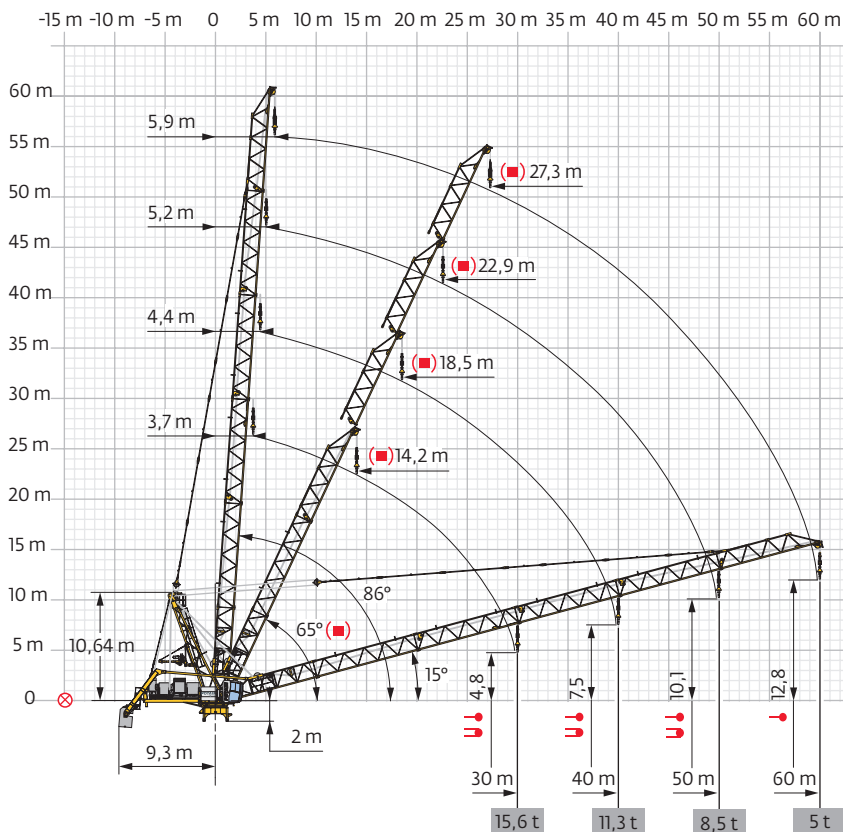
		□ 2,45 m					
		◀●▶ Y 800B		◀●▶ ZX 6830		◀●▶ J 850A	
▲▲▲	H (m)	⚖️ (t)	H (m)	⚖️ (t)	H (m)	⚖️ (t)	
30 m	74,8	180	53,6	121	89,4	204	
40 m	69,8	168	50,2	121	86,1	204	
50 m	66,4	180	48,6	141	82,7	216	
60 m	61,4	180	45,2	161	79,4	216	

Lest de contre-flèche / Gegenauslegerballast / Counter-jib ballast / Lastre de contra-flecha / Zavorra di controbraccio
 Lastro da contra lança / Противовес стрелы



▲▲▲	4400 kg	⚖️ (kg)
30 m	7	30800
40 m	8	35200
50 m	9	39600
60 m	9	39600



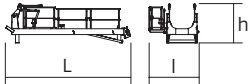
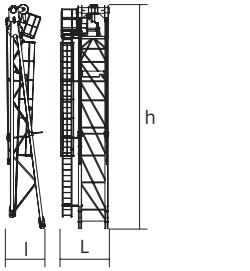

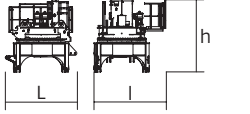
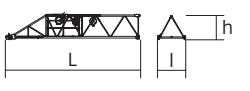
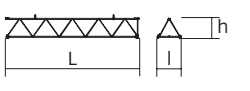
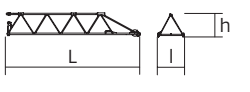
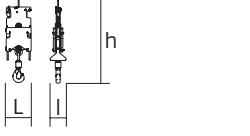
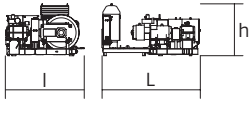
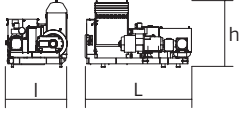
Flèche relevée / Ausleger in Steilstellung / Luffing jib / Flecha izada / Braccio impennato
 Lança inclinada / Маховая стрела

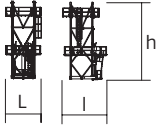


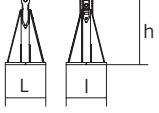
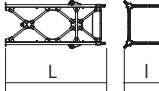
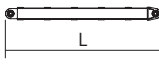
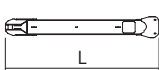
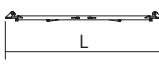
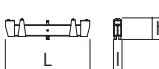
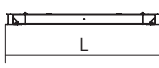

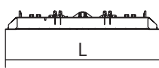


Encombremet et poids / Abmessungen und Gewicht / Dimensions and weight / Dimensiones y peso / Ingombro e peso
dimensões e pesos / габаритные размеры и вес











Partie tournante / Drehender Kranteil / Slewing crane part / Parte giratoria
Parte rotante / Parte rotativa / Поворотная часть :  60 m -  180/215 LBR













Partie tournante / Drehender Kranteil / Slewing crane part Parte giratoria / Parte rotante / Parte rotativa Поворотная часть	L (m)	I (m)	h (m)	kg (+/- 5%)		
Contre-flèche / Gegenausleger Counter-jib / Contra-flecha Controbraccio / Contra-lança Контр-стрела		6,37	2,57	1,77	2470	
Poinçon / Auslegerhaltebock Strut / Puntal Puntone / Extrator стойка		2,55	1,94	11,91	5490	
Cabine / Kabine Cab / Cabina Cabina / Cabina Кабина		Ultra View	4,55	1,99	2,49	1510
Pivot / Krankopf Towerhead / Pivote Portaralla / Pivot Секция поворотной части		□ 2,45 m	2,93	3,2	3,31	10485
Élément de flèche / Auslegerelement Jib section / Elemento de flecha Elemento di braccio / Elemento de lança Секция стрелы		①	9,7	1,9	1,77	2200
Élément de flèche / Auslegerelement Jib section / Elemento de flecha Elemento di braccio / Elemento de lança Секция стрелы		②	10,53	1,9	1,78	1330
		③	10,53	1,9	1,78	1295
		④	10,53	1,9	1,78	1170
		⑤	10,53	1,9	1,78	1045
Élément de flèche / Auslegerelement Jib section / Elemento de flecha Elemento di braccio / Elemento de lança Секция стрелы		⑥	10,47	1,9	1,86	2000
Moufle / Hubflasche Pulley block / Aparejo Bozzello / Cadernal Полиспаст		0,88	0,55	2,55	1170	
Treuil de levage (+ câble) / Hubwerk (+ Seil) Hoisting winch (+ rope) / Mecanismo de elevación (+ cabo) Argano di sollevamento (+ fune) Guincho de elevação (+ cabo) Подъемная лебедка (+ канатом)		180/215 LBR	4,04	2,97	2,14	10455
Treuil de levage (+ câble) / Auslegerverstellwerk (+ Seil) Luffing winch (+ rope) / Mecanismo de izado (+ cabo) Argano di Impennaggio braccio (+ fune) Mecanismo de Inclinação da Lança (+ cabo) лебедка подъема стрелы (+ канатом)		124/150 VBR	3,62	2,05	2,28	4020

Equipement de télescopage / Teleskopierausrüstung / Telescoping equipment Equipo de telescopaje / Equipaggiamento di telescopaggio / Equipamento de telescopagem Оборудование для телескопирования	L (m)	l (m)	h (m)	kg (+/- 5%)	
Cage de télescopage / Teleskopwagen Telescopic cage / Jaula de telescopaje Gabbia di telescopaggio / Gaiola de telescopagem для телескопирования крана	 $\square 2,45$ m	4,62	5,79	10,23	12920
Mâture / Mastwerk / Masts Mástil / Torre / Coluna Мачты					
K 850/KR 849A KRMT 849A K 839A KMT 850.10A	 $\square 2,45$ m	5,24 5,23 5,23 5,32	2,54 2,55 2,52 2,54	2,5 2,53 2,48 2,51	5575 4090 3245 5450
KRMT 849C	 $\square 2,45$ m	3,57	2,55	2,53	3205
Bases / Kranbasen / Crane bases Bases / Basi / Bases фундамент под кран					
Pieds de scellement / VerankerungsfüÙe Fixing angles / Pie de empotramiento Montante da annegare / Angulos fixadores анкера	 P 800B P 850A	0,75 0,9	0,75 0,9	1,28 1,49	465 835
Mât-châssis / Grundmasteinheit Basic mast unit / Tramo-chasis Elemento base / Tramo-chassis Мачта для крепления к шасси	 Y 800B J 850A	6,03 8,96	2,93 2,93	2,93 2,93	8620 14250
Haubans / Mastabstützungen Struts / Tornapuntas Puntoni / Escoras Растяжка	 Y 800B J 850A	5,51 8,56	0,5 0,52	0,45 0,4	1110 1650
1/2 Longeron / 1/2 Längsträger 1/2 Side member / 1/2 Larguero 1/2 Longherone / 1/2 Longarina 1/2 боковина	 J 850A J 850A Y 800B	7,3 7,4 5,68	0,69 0,69 1,24	1,01 1,14 0,73	2580 2630 1520
Longeron / Längsträger Side member / Larguero Longherone / Longarina боковина	 Y 800B	12	1,24	0,73	3050
Support lest / Ballastträger Ballast support / Soporte de lastre Supporto zavorra / Suporte de lastro Опора балласта	 Y 800B	3,75	0,37	0,92	1085
Traverse de châssis / Unterwagentraverse Chassis beam / Traviesa chasis Traversa carro / Travessa chassis балка шасси	 J 850A Y 800B	10,7 8,7	0,87 0,83	0,85 0,74	3320 2240
Bras de crois / Fundamentkreuzträger Cross girder / Braço en cruz Braccio croce / Braço da cruz Поперечная балка	 ZX 6830	9,1	0,76	1,48	5445
Bras de crois / Fundamentkreuzträger Cross girder / Braço en cruz Braccio croce / Braço da cruz Поперечная балка	 ZX 6830	9,1	1,12	1,1	5265

Mécanismes / Triebwerke / Mechanisms / Mecanismos / Meccanismi
 Mecanismos / Механизмы

400 V - 50 Hz											ch - PS hp	kW	
	180 LBR 120	m/min t	5,3/53 12	8,4/84 7,3	13,5/135 4,3	21,4/214 2,35	2,6/26 24	4,2/42 15	6,7/67 8,9	10,7/107 5	180	132	580 m
	124 VBR	m/min	1 min 31 s								125	90	
	R - 8,8	tr/min U/min rpm	0 → 0,67								2 x 6	2 x 4,4	
Y 800B 	RT 584 A1 - 2V	m/min	13,5 - 27								8 x 7	8 x 5,2	
ZX 6830 	RT 664 A2B - 2V	m/min	16 - 32								6 x 7	6 x 5,2	
J 850A 													

 IEC 60204-32	 kVA
400 V (+10% -10%) 50 Hz	180 LBR : 300 kVA

480 V - 60 Hz											ch - PS hp	kW	
	215 LBR 120	m/min t	6,3/63 12	10/100 7,3	16/162 4,3	25/256 2,35	3,1/31 24	5/50 15	8/81 8,9	13/128 5	215	158	580 m
	150 VBR	m/min	1 min 16 s								148	108	
	R - 10,5	tr/min U/min rpm	0 → 0,8								2 x 7,2	2 x 5,3	
Y 800B 	RT 584 A1 - 2V	m/min	16 - 32								8 x 8,4	8 x 6,2	
ZX 6830 	RT 664 A2B - 2V	m/min	19 - 38								6 x 8,4	6 x 6,2	
J 850A 													

 IEC 60204-32	 kVA
480 V (+6% -10%) 60 Hz	215 LBR : 350 kVA

	FR	DE	EN	ES	IT	PT	RU
	Réactions en service	Reaktionskräfte in Betrieb	Reactions in service	Reacciones en servicio	Reazioni in servizio	Reacções em serviço	Реакция при работе
	Réactions hors service	Reaktionskräfte außer Betrieb	Reactions out of service	Reacciones fuera de servicio	Reazioni fuori servizio	Reacções fora de serviço	Реакция в покое
	Poids à vide sans lest avec flèche et hauteur maximum	Gewicht ohne Last, ohne Ballast, mit Ausleger und max. Höhe	Weight without load, without ballast, with jib and max. height	Peso en vacío sin lastre, con flecha y altura máxima	Peso a vuoto, senza zavorra, con braccio e altezza massimi.	Peso em vazio sem lastro com lança e altura máxima.	Вес пустого, без балласта, со стрелой, максимальной высоты.
	Poids total du lest	Ballast-Gesamtgewicht	Total ballast weight	Peso total del lastre	Peso totale della zavorra	Peso total do lastro	Общий вес балласта
	Axe articulation flèche	Auslegergelenk-achse	Jib articulation axis	Eje de articulación de la flecha	Perno di articolazione del braccio	Eixo de articulação da lança	Ось шарнира стрелы
	Position girouette	Windfreistellung	Weathervaning position	Posición veleta	Libera rotazione	Posição em cata-vento	Флюгер
	Camion 13,4 m	Lkw 13,4 m	Lorry 13,4 m	Camión 13,4 m	Camion 13,4 m	Camião 13,4 m	Резусовой автомобиль 13,4 м
	Conteneur High Cube 40', et/ou Flat Rack 20'	Container High Cube 40', and/oder Flat Rack 20'	Container High Cube 40', and/or Flat Rack 20'	Contenedor High Cube 40', y/o Flat Rack 20'	Container High Cube 40', e/o Flat Rack 20'	Contentor High Cube 40' e/ou Flat Rack 20'	40-футовый контейнер повышенной вместимости High Cube, и/или 20-футовая открытая платформа Flat Rack
	Cadre d'ancrage serré	Fester Verankerungsrahmen	Tightened anchorage frame	Marco de anclaje de apriete	Quadro di ancoraggio stretto	Quadro de amarração apertado	Прикрепленная анкерная рама
	Cadre d'ancrage desserré	Loser Verankerungsrahmen	Loosened anchorage frame	Marco de anclaje de desapriete	Quadro di ancoraggio allentato	Quadro de amarração solto	Отсоединенная анкерная рама
	Levage	Heben	Hoisting	Elevación	Sollevamento	Elevação	Подъем
	Relevage	AL-Verstellen	Luffing	Izado	Brandeggio	Levantamento	Маховый подъем
	Orientation	Schwenken	Slewing	Orientación	Rotazione	Rotação	Поворот
	Translation	Kranfahren	Travelling	Traslación	Traslazione	Translação	Перемещение крана
	Puissance nominale	Nennleistung	Rated power	Potencia nominal	Potenza nominale	Potência nominal	Номинальная мощность
	Nous consulter	AufAnfrage	Consult us	Consultarnos	Consultateci	Consultar-nos	Проконсультируйтесь у нас
	Document commercial non contractuel. Pour toute information technique se référer à la notice correspondante.	Unverbindliches Vertriebsdokument. Für technische Informationen, siehe die entsprechenden Anweisungen.	This commercial document is not legally binding. For any technical information, please refer to the corresponding instructions.	Documento comercial no contractual. Para cualquier información técnica, ver la noticia correspondiente.	Documento commerciale non vincolante, per tutte le informazioni tecniche fare riferimento al catalogo istruzioni.	Documento comercial não contractual. Para qualquer informação técnica complementar consultar as respectivas instruções.	Этот коммерческий документ не является юридически обязательным. Для получения технической информации, см. соответствующие инструкции.



Manitowoc - Americas
Manitowoc, Wisconsin, USA
 Tel: +1 920 684 6621
 Fax: +1 920 683 6277

Shady Grove, Pennsylvania, USA
 Tel: +1 717 597 8121
 Fax: +1 717 597 4062

Manitowoc - Europe, Middle East & Africa
Ecully, France
 Tel: +33 (0)4 72 18 20 20
 Fax: +33 (0)4 72 18 20 00

Manitowoc - Asia & Pacific
Shanghai, China
 Tel: +86 21 6457 0066
 Fax: +86 21 6457 4955