

Vanmate™

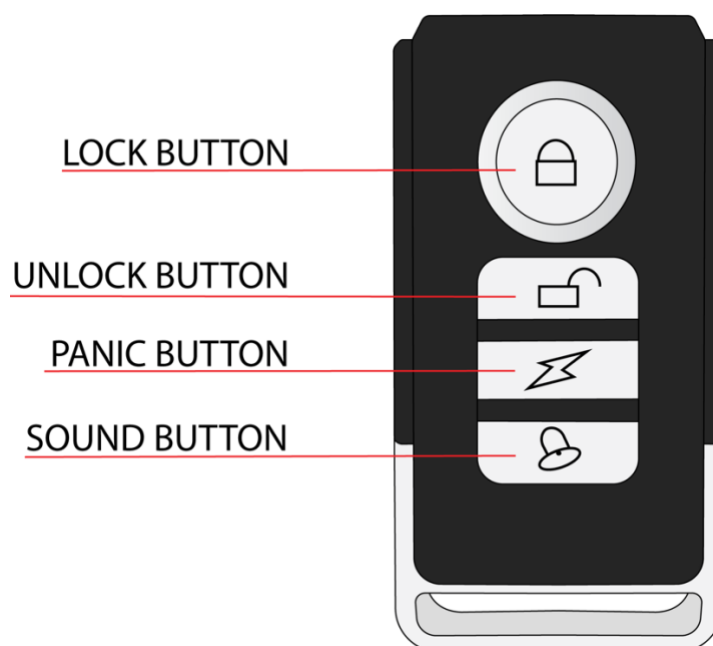


Instruction Manual

Vanmate
Contact Alarm

Table Of Contents

TABLE OF CONTENTS.....	2
GENERAL NOTES	3
TECHNICAL DETAILS	3
BOX CONTENTS	4
OPENING THE SIREN HOUSING.....	4
INSTALLATION	4
OPERATING INSTRUCTIONS	5
REMOTE CONTROL (FOB) – PAIRING GUIDE	6
REPLACING THE BATTERIES.....	6
SUPPORT	7



General Notes

Vanmate Contact Alarm is a visible and audible zonal alarm which functions as a first contact proximity alarm. Vanmate Contact Alarm is designed to protect high-risk areas on a vehicle or equipment and alert against the potential threat of damage to doors and locks, and guard against any potential theft or unauthorised entry.

Vanmate Contact Alarm can be installed internally or externally in your vehicle or any equipment/surface using a screw fixing, adhesive squares (included) or zip-ties (included) and will trigger at 110DB when touched or tampered with.

Technical Details

- Triaxial accelerometer
- 7 individual levels for sensitivity adjustment
- Panic alarm activation button
- 3 x AAA batteries installed in each compartment for a long standby time up to 6 months and an approximate 1-3 months depending on daily usage.
- Waterproof: IP55
- Volume: 110dB
- Operating temperature: -20~60°C
- Operating humidity: <80%
- Storage conditions: -30°C +70°C

Box Contents

- 1 x Vanmate Contact Alarm
- 1 x Remote Control with keychain
- 2 x Zip-tie
- 2 x Adhesive padding
- 1 x Screwdriver
- 3 x AAA batteries (included in alarm)
- 1 x triangular slice (splitter)

Opening the Siren Housing

To remove the siren housing, you can use a thin object such as the screwdriver supplied or even a ball point pen. Simply push in one of the side latches, which will release each individual corner and offer that corner up, then move on to pushing in the next latch. All 4 latches need to be depressed and released from their internal locking mechanism to lift the siren housing from its base.

Once siren housing is separated from the base, you can simply push through the circle in the upper housing below to detach the siren.

Remove plastic cover from batteries. Simply pull-out plastic pull tag located on main part of the alarm (siren).

Installation

* Please read these instructions fully before installing*

There are 3 methods to install the Alarm housing.

OPTION 1 - via the adhesive padding (i.e. on a flat surface):

- Make sure you have removed plastic cover from battery.
- Ensure the location surface of where you are attaching the alarm is clean and dust-free.
- Remove the protective film cover from the base of the adhesive padding, exposing the 3M 5952F adhesive surface (Be careful not to touch or contaminate the surface).
- Carefully attach the adhesive padding and stick the housing unit onto the flat surface, applying even pressure across the whole base. Care is required as the applied pressure activates the adhesive molecules and creates a strong, lasting bond.

OPTION 2 - you can use a screw fastening if you wish in the lower housing (note: you will need to open the siren housing as per the instructions above)

OPTION 3 - you can use the included zip-tie to attach the alarm – for example to a round surface such as a pipe.

Operating Instructions

Arm & Disarm Mode Setting:

Press the Lock Button on the remote once, the alarm will make two identical 'beeps', and then a third 'beep' after 5 seconds. You alarm in ARM alert state.

When contact or displacement is detected the alarm will sound a warning for 2 seconds. If the alarm is triggered again within 2-12 seconds, it will alarm for 30 seconds automatically. To stop the alarm or exit ARM mode, press the Unlock Button on the remote once. This button deactivates the alarm. To activate the alarm again, press Lock Button.

Adjusting Sensitivity:

Vanmate Contact Alarm units are manufactured and dispatched at their most sensitive level and can be customised to a variety of conditions.

Please note, the end user is responsible for fine-tuning the sensitivity of their alarm if necessary, dependent on the level of exposure required, and to avoid unnecessary false alerts. If you experience a "false alarm" might need to adjust and lower the sensitivity level.

To adjust sensitivity, press and hold the Unlock Button which will make the alarm 'beep' 3 times. The LED indicator on the remote/fob will temporarily switch off then back on again. Make sure to hold the Unlock Button until LED indicator is back on. You have now entered the sensitivity setting mode.

Press the Lock Button and you will be able to choose sensitivity level in descending order: Do, Re, Mi, Fa, So, La, Te. 'Do' is the most sensitive setting, and 'Te' the least sensitive setting.

Press the Lock Button to move down the scale to find your wanted sensitivity setting. Once you have selected the desired sensitivity, press Unlock Button to set new sensitivity setting and exit the sensitivity setting mode.

Don't forget to press Lock Button again to activate the alarm.

Panic Button:

By pressing the Panic Button, the alarm will set off automatically. Even if there is no contact to trigger the alarm.

The Panic Button is the third button from the top, with a lightning symbol on it.

Remote Control (FOB) – Pairing Guide

Remove the batteries for 30 seconds then reload them. Press and hold the Sound Button (fourth button down from the top - shaped like a rectangle with a bell logo). You hear a 'beep', then press the Lock Button and 2 beeps will sound if successfully set.

Test the pairing by activating and deactivating the alarm.

Programming a Second Remote:

Remove the batteries from the Vanmate Contact Alarm and wait for at least 30 seconds before reinserting them.

Press and hold the Sound Button on original remote, to enter the 'adding a remote' mode.

Once the audible alarm emits a single beep, press the Lock Button on new/additional remote. You should now hear two beeps ('Bi, Bi' sound), indicating that the new remote has been successfully paired with the audible alarm and is now ready for use.

Removing all connected remotes:

Be careful when carrying out this operation. Keep the alarm in disarm mode. Press the Lock Button for a little longer on the paired remote. The LED indicator will temporarily switch off then back on, at which point you will hear a beep. Press button and 3 beeps will sound if paired remotes are successfully removed.

Replacing the batteries

Remote Control:

The remote control batteries will need replacing when the LED darkens or if you notice the wireless range is becoming shorter.

Alarm Unit:

The alarm batteries will need replacing if performance is notably reduced or if you hear a "Du...Du" sound when armed.

1. Open the siren housing (refer to installation instructions)
2. Carefully remove the sealed electronics compartment that contains the batteries (take care to ease the unit away from the seal around the outlet).
3. Once out, remove the screw. Use the triangular slice (splitter) to separate the two halves and replace the x3 AAA batteries.
4. If successful, the alarm will sound 3 beeps.

Support

Thank you for choosing Vanmate! We appreciate your trust in our product.

For any further information, including instructions, policies, and updates, please visit the Vanmate website. The Vanmate team is dedicated to providing you with the best possible experience, and we are here to assist you every step of the way.

If you have any questions, please visit buy.vanmate.co or email support@vanmate.co