

## Technical details

- Triaxial accelerometer
- 7 individual levels for sensitivity adjustment
- SOS alarm activation button
- x3 AAA batteries installed in each compartment for a long standby time up to 6 months and an approximate 1-3 months depending on daily usage
- Waterproof: IP55
- Range: 30-50m
- Volume: 110dB
- Operating temperature: -20~60°C
- Operating humidity: <80%
- Storage conditions: -30°C +70°C

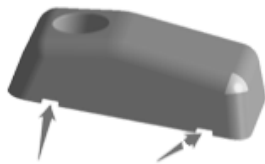


## Siren Housing

In order to remove the siren housing, you can use a thin object such as the screwdriver supplied or even a ball point pen.

Simply push in one of the side flanges, which will release each individual corner and offer that corner up, then move on to pushing in the next flange. All 4 flanges need to be depressed and released from their internal latch in order to lift the siren housing from its base.

Once siren housing is separated from the base, you can simply push through the circle in the upper housing below to detach the siren.



## Replacing Batteries

Alarm: batteries will need replacing if performance is notably reduced or if you hear "Du...Du" when armed.

Remote: batteries will need replacing when the LED darkens or if you notice the wireless range is shorter.

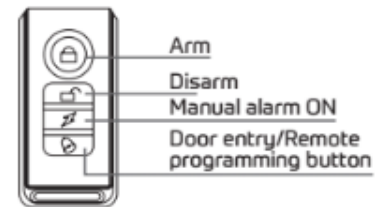
Method of loading & replacing batteries: First follow procedure underneath. Carefully remove the sealed electronics compartment that contains the batteries (take care to ease the unit away from the seal around the outlet).

Once out, remove the screw. Use the triangular slice (splitter) to separate the two halves and replace the x3 AAA batteries. If successful the alarm will sound 3 beep



## Usages and Settings

### Remote Control



Arm & Disarm Mode Setting: Press the button on the remote once, the alarm will sound 'beep, beep' then 'beep' after 5 seconds when it is in ARM alert state.

When contact or displacement is detected the alarm will sound a warning for 2 seconds. If the alarm is triggered again within 2-12 seconds, it will alarm for 30 seconds automatically.

To stop the alarm or exit ARM mode, press the button on the remote once. This button activates the alarm manually





VanDefend is a visible and audible zonal alarm and crime deterrent.

It is designed to protect high-risk areas on a vehicle and alert against the potential threat of damage to doors and locks, and guard against the potential threat of copper pipe theft from a "pipe" carrier or ladders from a roof rack.

VanDefend can be installed internally or externally in your van using a screw fixing and adhesive squares.

## Fitting

*\*Please read the full pamphlet before fitting\**

- Ensure the location surface is clean and dust-free.
- Remove the protective film cover from the base, exposing the 3M 5952F adhesive surface. (Be careful not to touch or contaminate the surface).
- Carefully offer the base up into position and begin to apply pressure across the whole base area rubbing from corner to corner. Care is required as the applied pressure activates the adhesive molecules and creates a strong, lasting bond.
- You can also use a screw if you wish in the lower housing.



## Protection of side doors:

The alarm unit(s) should be positioned in relative proximity to vulnerable areas in order to give maximum protection with multipoint application. They can then be paired to one master remote control, by following the simple 'Programme Remote' instructions.

## Adjusting Sensitivity

VanDefend alarm units are manufactured and dispatched at their most sensitive level and can be customised to a variety of conditions.

7 Level Sensitivity Adjustment

NB: The end user is responsible for fine-tuning the sensitivity of their alarm if necessary, dependent on the level of exposure required, and to avoid unnecessary false alerts.

If you experience a "false alarm" you will need to adjust and lower the sensitivity level.

## Sensitivity Adjustment:

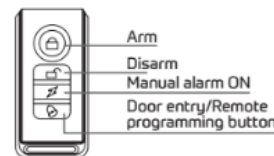
The 7 levels of sensitivity range from "Do...Re...Mi...Fa...So...La...Te".

The default sensitivity is "Do" (highest). To adjust sensitivity, **press and hold the alarm** which will sound 'beep' 2 or 3 times.

The LED indicator will temporarily switch off then back on, then press button once. It will sound "Do...Re...Mi...Fa...So... La...Te, then press the button again. You will hear "Do", press again "Re", etc. from highest to lowest setting, then this will be continually repeated until you reach your required level.

Once you have selected the desired sensitivity, press button to exit the sensitivity setting mode.

## Remote Control



## Programming the Remote:

Remove the batteries for 30 seconds then reload them. Press and hold button. You hear a 'beep', then press buttons and 2 beeps will sound if successfully set.

## Programming a second remote:

Press the button on paired remote once, then press the button for a little longer. The LED indicator will temporarily switch off then back on, at which point you will hear a beep. Press button on the second remote. 2 beeps will sound if successfully set.

## Removing all connected remotes:

Be careful when carrying out this operation. Keep the alarm in disarm mode. Press the button for a little longer on the paired remote. The LED indicator will temporarily switch off then back on, at which point you will hear a beep. Press button and 3 beeps will sound if paired remotes are successfully removed.